




## Property summary

 **1** Garages

 **4** Bedrooms

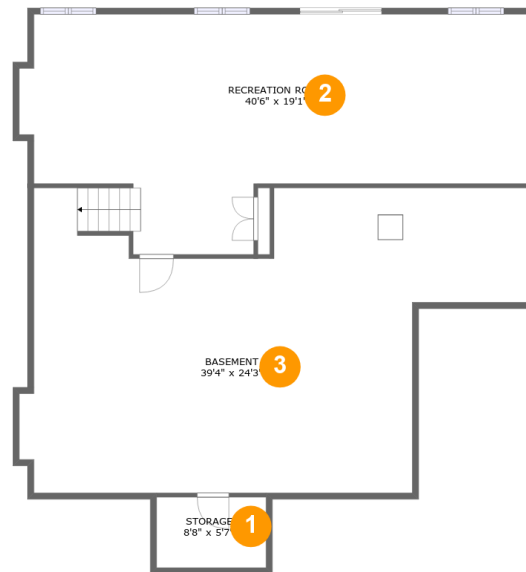
 **2** Bathrooms

 **1** Half baths

 **3** Floors

 **2,778** Gross living area sqft

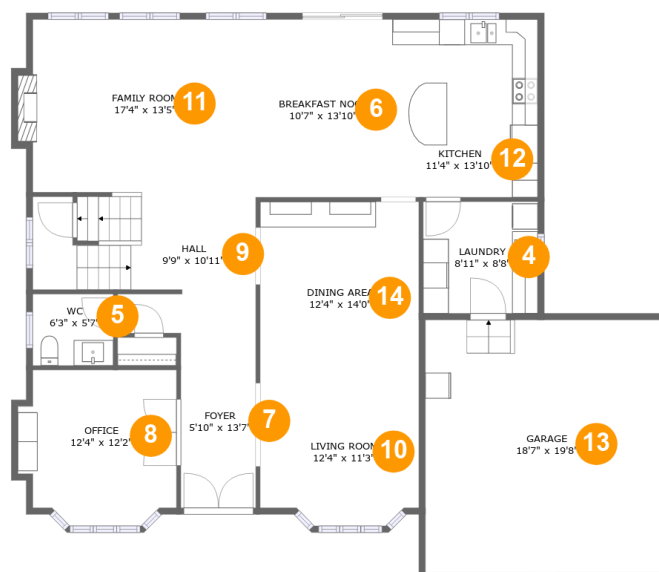
 **4,950** Total sqft

**36 Jane Ave, Courtice, ON, CA****Room dimensions**

Floor 1

Total sqft: 1504 Living area: 0

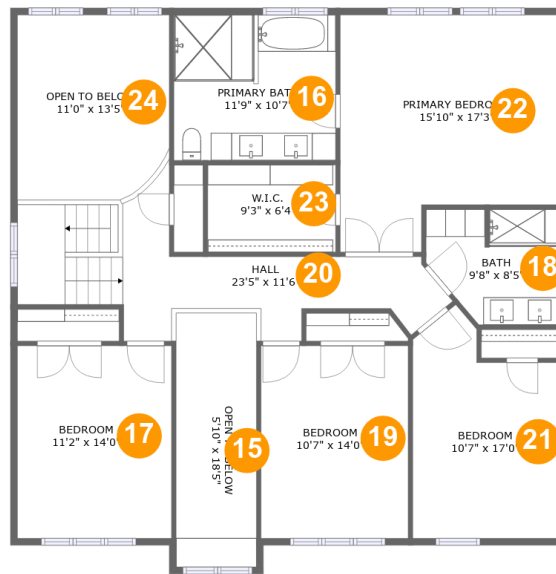
#		Dimensions	sqft	Counted as living area
1	Storage	8'8" x 5'7"	49 sq. ft	No
2	Recreation Room	40'6" x 19'1"	604 sq. ft	No
3	Basement	39'4" x 24'3"	738 sq. ft	No

**36 Jane Ave, Courtice, ON, CA****Room dimensions**

Floor 2

Total sqft: 1859 Living area: 1460

#		Dimensions	sqft	Counted as living area
4	Laundry	8'11" x 8'8"	78 sq. ft	Yes
5	WC	6'3" x 5'7"	35 sq. ft	Yes
6	Breakfast Nook	10'7" x 13'10"	147 sq. ft	Yes
7	Foyer	5'10" x 13'7"	79 sq. ft	Yes
8	Office	12'4" x 12'2"	136 sq. ft	Yes
9	Hall	9'9" x 10'11"	162 sq. ft	Yes
10	Living Room	12'4" x 11'3"	131 sq. ft	Yes
11	Family Room	17'4" x 13'5"	240 sq. ft	Yes
12	Kitchen	11'4" x 13'10"	157 sq. ft	Yes
13	Garage	18'7" x 19'8"	366 sq. ft	No
14	Dining Area	12'4" x 14'0"	173 sq. ft	Yes

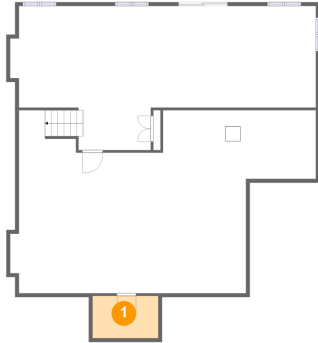
**36 Jane Ave, Courtice, ON, CA****Room dimensions**

Floor 3

Total sqft: 1587 Living area: 1318

#		Dimensions	sqft	Counted as living area
15	Open To Below	5'10" x 18'5"	108 sq. ft	No
16	Primary Bath	11'9" x 10'7"	124 sq. ft	Yes
17	Bedroom	11'2" x 14'0"	156 sq. ft	Yes
18	Bath	9'8" x 8'5"	71 sq. ft	Yes
19	Bedroom	10'7" x 14'0"	149 sq. ft	Yes
20	Hall	23'5" x 11'6"	185 sq. ft	Yes
21	Bedroom	10'7" x 17'0"	149 sq. ft	Yes
22	Primary Bedroom	15'10" x 17'3"	239 sq. ft	Yes
23	W.I.C.	9'3" x 6'4"	59 sq. ft	Yes
24	Open To Below	11'0" x 13'5"	143 sq. ft	No

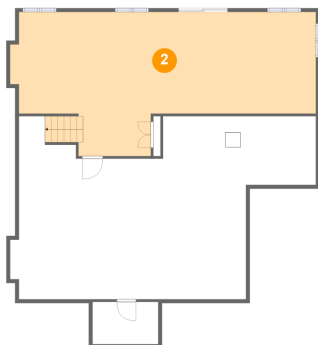
## 1 Floor 1 - Storage



Dimensions: 8'8" x 5'7"  
Area: 49 sq. ft  
Counted as living area: No

Heated: No  
Finished: No  
Enclosed: No  
Contiguous: Yes  
Permitted: Yes  
Wet space: No  
Addition: No  
Conversion: No

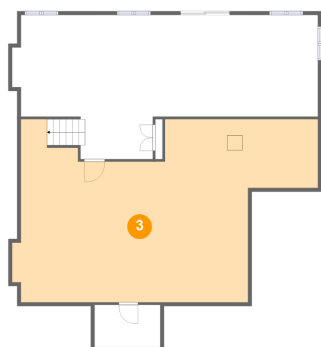
## 2 Floor 1 - Recreation Room



Dimensions: 40'6" x 19'1"  
Area: 604 sq. ft  
Counted as living area: No

Heated: Yes  
Finished: Yes  
Enclosed: Yes  
Contiguous: No  
Permitted: Yes  
Wet space: No  
Addition: No  
Conversion: No

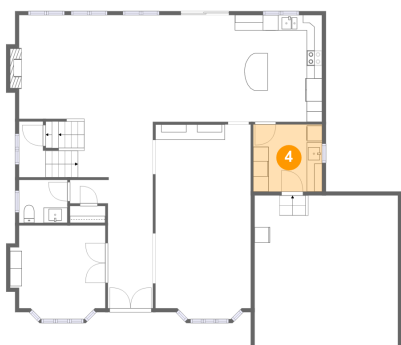
### 3 Floor 1 - Basement



Dimensions: 39'4" x 24'3"  
Area: 738 sq. ft  
Counted as living area: No

Heated: Yes  
Finished: No  
Enclosed: Yes  
Contiguous: Yes  
Permitted: Yes  
Wet space: No  
Addition: No  
Conversion: No

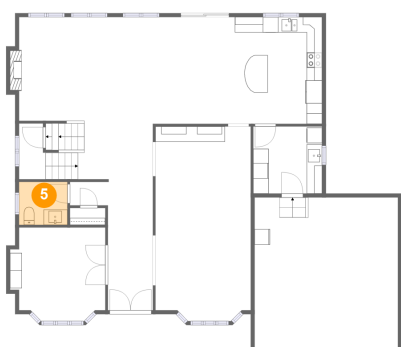
### 4 Floor 2 - Laundry



Dimensions: 8'11" x 8'8"  
Area: 78 sq. ft  
Counted as living area: Yes

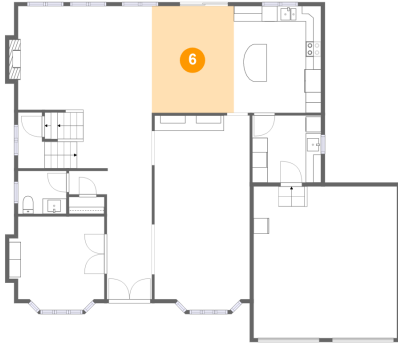
Heated: Yes  
Finished: Yes  
Enclosed: Yes  
Contiguous: Yes  
Permitted: Yes  
Wet space: No  
Addition: No  
Conversion: No

### 5 Floor 2 - WC



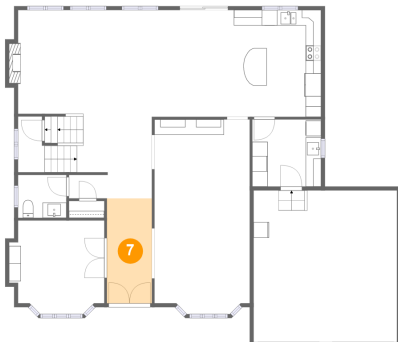
Dimensions: 6'3" x 5'7"  
Area: 35 sq. ft  
Counted as living area: Yes

Heated: Yes  
Finished: Yes  
Enclosed: Yes  
Contiguous: Yes  
Permitted: Yes  
Wet space: Yes  
Addition: No  
Conversion: No

**36 Jane Ave, Courtice, ON, CA****6 Floor 2 - Breakfast Nook**

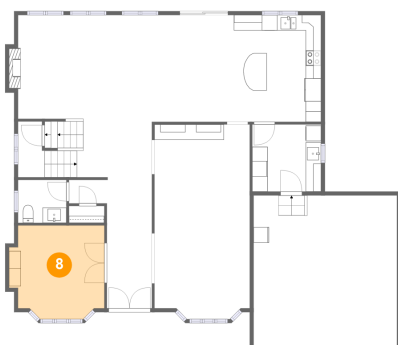
**Dimensions:** 10'7" x 13'10"  
**Area:** 147 sq. ft  
**Counted as living area:** Yes

**Heated:** Yes  
**Finished:** Yes  
**Enclosed:** Yes  
**Contiguous:** Yes  
**Permitted:** Yes  
**Wet space:** No  
**Addition:** No  
**Conversion:** No

**7 Floor 2 - Foyer**

**Dimensions:** 5'10" x 13'7"  
**Area:** 79 sq. ft  
**Counted as living area:** Yes

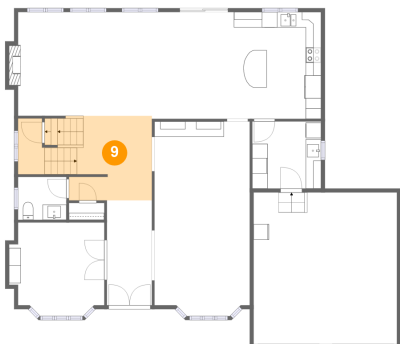
**Heated:** Yes  
**Finished:** Yes  
**Enclosed:** Yes  
**Contiguous:** Yes  
**Permitted:** Yes  
**Wet space:** No  
**Addition:** No  
**Conversion:** No

**8 Floor 2 - Office**

**Dimensions:** 12'4" x 12'2"  
**Area:** 136 sq. ft  
**Counted as living area:** Yes

**Heated:** Yes  
**Finished:** Yes  
**Enclosed:** Yes  
**Contiguous:** Yes  
**Permitted:** Yes  
**Wet space:** No  
**Addition:** No  
**Conversion:** No

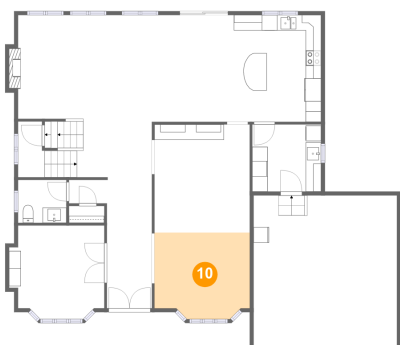
## 9 Floor 2 - Hall



Dimensions: 9'9" x 10'11"  
Area: 162 sq. ft  
Counted as living area: Yes

Heated: Yes  
Finished: Yes  
Enclosed: Yes  
Contiguous: Yes  
Permitted: Yes  
Wet space: No  
Addition: No  
Conversion: No

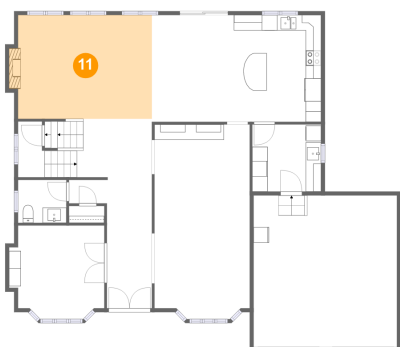
## 10 Floor 2 - Living Room



Dimensions: 12'4" x 11'3"  
Area: 131 sq. ft  
Counted as living area: Yes

Heated: Yes  
Finished: Yes  
Enclosed: Yes  
Contiguous: Yes  
Permitted: Yes  
Wet space: No  
Addition: No  
Conversion: No

## 11 Floor 2 - Family Room



Dimensions: 17'4" x 13'5"  
Area: 240 sq. ft  
Counted as living area: Yes

Heated: Yes  
Finished: Yes  
Enclosed: Yes  
Contiguous: Yes  
Permitted: Yes  
Wet space: No  
Addition: No  
Conversion: No



## 12 Floor 2 - Kitchen



Dimensions: 11'4" x 13'10"  
Area: 157 sq. ft  
Counted as living area: Yes

Heated: Yes  
Finished: Yes  
Enclosed: Yes  
Contiguous: Yes  
Permitted: Yes  
Wet space: No  
Addition: No  
Conversion: No

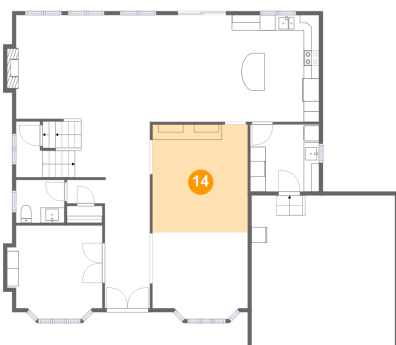
## 13 Floor 2 - Garage



Dimensions: 18'7" x 19'8"  
Area: 366 sq. ft  
Counted as living area: No

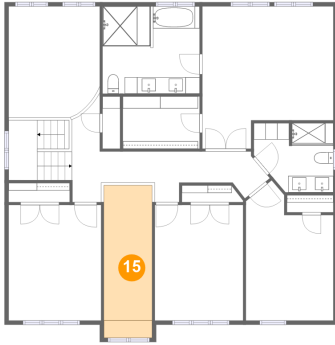
Heated: No  
Finished: No  
Enclosed: Yes  
Contiguous: Yes  
Permitted: Yes  
Wet space: No  
Addition: No  
Conversion: No

## 14 Floor 2 - Dining Area



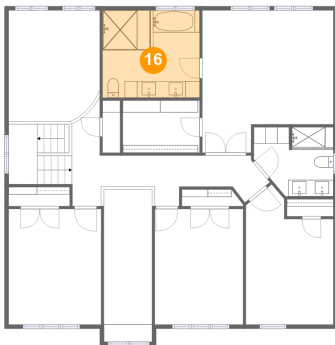
Dimensions: 12'4" x 14'0"  
Area: 173 sq. ft  
Counted as living area: Yes

Heated: Yes  
Finished: Yes  
Enclosed: Yes  
Contiguous: Yes  
Permitted: Yes  
Wet space: No  
Addition: No  
Conversion: No

**36 Jane Ave, Courtice, ON, CA****15 Floor 3 - Open To Below**

**Dimensions:** 5'10" x 18'5"  
**Area:** 108 sq. ft  
**Counted as living area:** No

**Heated:** No  
**Finished:** No  
**Enclosed:** No  
**Contiguous:** Yes  
**Permitted:** No  
**Wet space:** No  
**Addition:** No  
**Conversion:** No

**16 Floor 3 - Primary Bath**

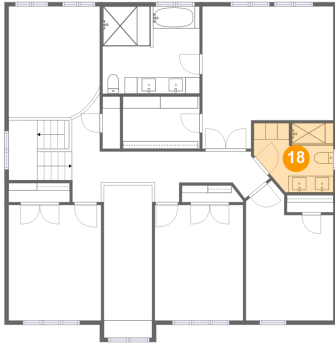
**Dimensions:** 11'9" x 10'7"  
**Area:** 124 sq. ft  
**Counted as living area:** Yes

**Heated:** Yes  
**Finished:** Yes  
**Enclosed:** Yes  
**Contiguous:** Yes  
**Permitted:** Yes  
**Wet space:** Yes  
**Addition:** No  
**Conversion:** No

**17 Floor 3 - Bedroom**

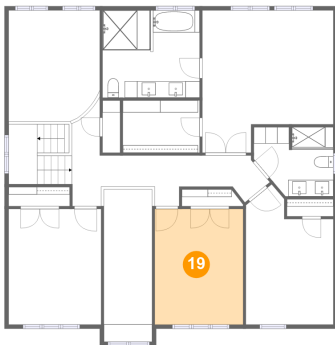
**Dimensions:** 11'2" x 14'0"  
**Area:** 156 sq. ft  
**Counted as living area:** Yes

**Heated:** Yes  
**Finished:** Yes  
**Enclosed:** Yes  
**Contiguous:** Yes  
**Permitted:** Yes  
**Wet space:** No  
**Addition:** No  
**Conversion:** No

**36 Jane Ave, Courtice, ON, CA****18 Floor 3 - Bath**

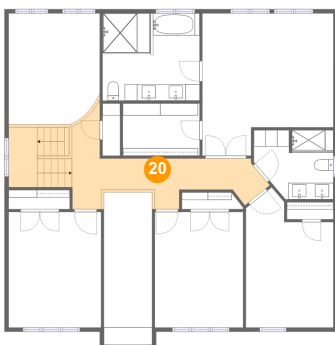
**Dimensions:** 9'8" x 8'5"  
**Area:** 71 sq. ft  
**Counted as living area:** Yes

**Heated:** Yes  
**Finished:** Yes  
**Enclosed:** Yes  
**Contiguous:** Yes  
**Permitted:** Yes  
**Wet space:** Yes  
**Addition:** No  
**Conversion:** No

**19 Floor 3 - Bedroom**

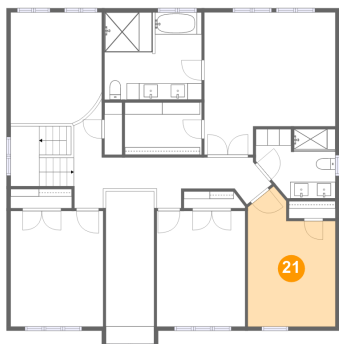
**Dimensions:** 10'7" x 14'0"  
**Area:** 149 sq. ft  
**Counted as living area:** Yes

**Heated:** Yes  
**Finished:** Yes  
**Enclosed:** Yes  
**Contiguous:** Yes  
**Permitted:** Yes  
**Wet space:** No  
**Addition:** No  
**Conversion:** No

**20 Floor 3 - Hall**

**Dimensions:** 23'5" x 11'6"  
**Area:** 185 sq. ft  
**Counted as living area:** Yes

**Heated:** Yes  
**Finished:** Yes  
**Enclosed:** Yes  
**Contiguous:** Yes  
**Permitted:** Yes  
**Wet space:** No  
**Addition:** No  
**Conversion:** No

**21 Floor 3 - Bedroom**

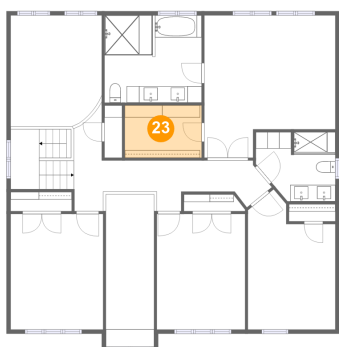
**Dimensions:** 10'7" x 17'0"  
**Area:** 149 sq. ft  
**Counted as living area:** Yes

**Heated:** Yes  
**Finished:** Yes  
**Enclosed:** Yes  
**Contiguous:** Yes  
**Permitted:** Yes  
**Wet space:** No  
**Addition:** No  
**Conversion:** No

**22 Floor 3 - Primary Bedroom**

**Dimensions:** 15'10" x 17'3"  
**Area:** 239 sq. ft  
**Counted as living area:** Yes

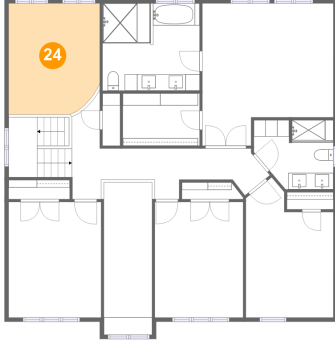
**Heated:** Yes  
**Finished:** Yes  
**Enclosed:** Yes  
**Contiguous:** Yes  
**Permitted:** Yes  
**Wet space:** No  
**Addition:** No  
**Conversion:** No

**23 Floor 3 - W.I.C.**

**Dimensions:** 9'3" x 6'4"  
**Area:** 59 sq. ft  
**Counted as living area:** Yes

**Heated:** Yes  
**Finished:** Yes  
**Enclosed:** Yes  
**Contiguous:** Yes  
**Permitted:** Yes  
**Wet space:** No  
**Addition:** No  
**Conversion:** No

**24** Floor 3 - Open To Below



**Dimensions:** 11'0" x 13'5"  
**Area:** 143 sq. ft  
**Counted as living area:** No

**Heated:** No  
**Finished:** No  
**Enclosed:** No  
**Contiguous:** Yes  
**Permitted:** No  
**Wet space:** No  
**Addition:** No  
**Conversion:** No