

3585 E Arapahoe Pl, Centennial, CO, US




Property Summary


 **1** garages

 **3** bedrooms

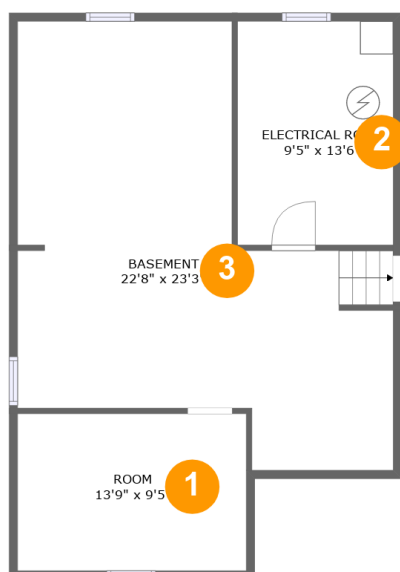
 **2** bathrooms

 **1** half baths

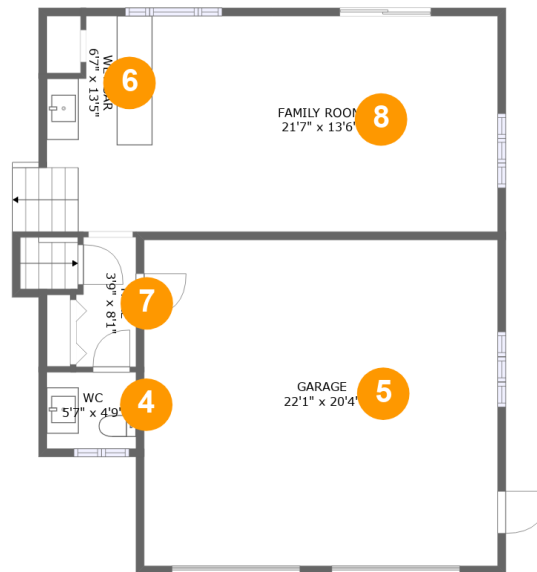
 **4** floors

 **2,171** Gross Living Area sqft

 **3,409** total sqft

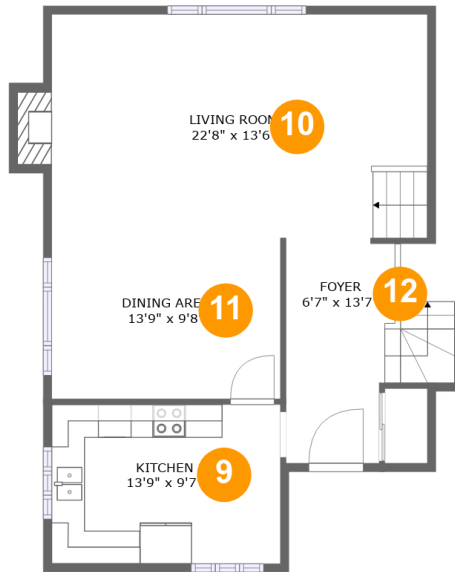
3585 E Arapahoe Pl, Centennial, CO, US**Room Dimensions****Floor 1****Total sqft: 752****Living area: 0**

| # | Room name | Dimensions | Area (sqft) | Counted as Living Area |
|---|-----------------|---------------|-------------|------------------------|
| 1 | Room | 13'9" x 9'5" | 130 sq. ft | No |
| 2 | Electrical Room | 9'5" x 13'6" | 126 sq. ft | No |
| 3 | Basement | 22'8" x 23'3" | 423 sq. ft | No |

3585 E Arapahoe Pl, Centennial, CO, US**Room Dimensions****Floor 2****Total sqft: 998****Living area: 523**

| # | Room name | Dimensions | Area (sqft) | Counted as Living Area |
|---|-------------|---------------|-------------|------------------------|
| 4 | Wc | 5'7" x 4'9" | 27 sq. ft | Yes |
| 5 | Garage | 22'1" x 20'4" | 450 sq. ft | No |
| 6 | Wet Bar | 6'7" x 13'5" | 86 sq. ft | Yes |
| 7 | Hall | 3'9" x 8'1" | 29 sq. ft | Yes |
| 8 | Family Room | 21'7" x 13'6" | 291 sq. ft | Yes |

3585 E Arapahoe Pl, Centennial, CO, US



Room Dimensions

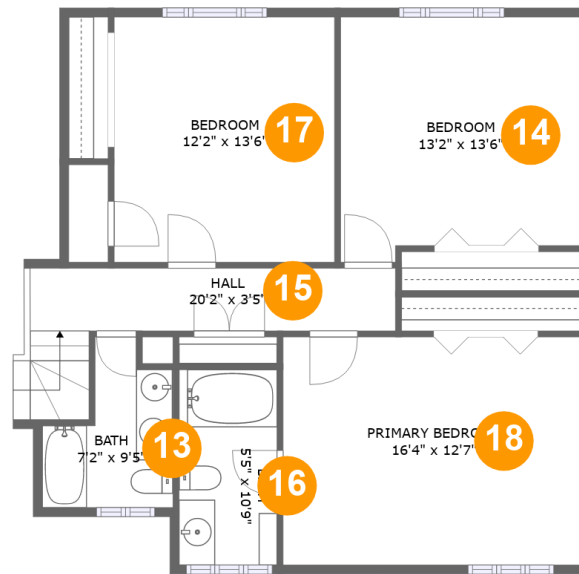
Floor 3

Total sqft: 745

Living area: 734

| # | Room name | Dimensions | Area (sqft) | Counted as Living Area |
|----|-------------|---------------|-------------|------------------------|
| 9 | Kitchen | 13'9" x 9'7" | 132 sq. ft | Yes |
| 10 | Living Room | 22'8" x 13'6" | 314 sq. ft | Yes |
| 11 | Dining Area | 13'9" x 9'8" | 133 sq. ft | Yes |
| 12 | Foyer | 6'7" x 13'7" | 87 sq. ft | Yes |

3585 E Arapahoe Pl, Centennial, CO, US



Room Dimensions

Floor 4

Total sqft: 914

Living area: 914

| # | Room name | Dimensions | Area (sqft) | Counted as Living Area |
|----|-----------------|---------------|-------------|------------------------|
| 13 | Bath | 7'2" x 9'5" | 50 sq. ft | Yes |
| 14 | Bedroom | 13'2" x 13'6" | 169 sq. ft | Yes |
| 15 | Hall | 20'2" x 3'5" | 85 sq. ft | Yes |
| 16 | Bath | 5'5" x 10'9" | 58 sq. ft | Yes |
| 17 | Bedroom | 12'2" x 13'6" | 164 sq. ft | Yes |
| 18 | Primary Bedroom | 16'4" x 12'7" | 206 sq. ft | Yes |

3585 E Arapahoe Pl, Centennial, CO, US

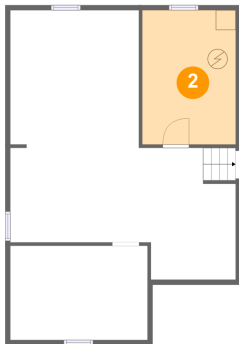
1 Floor 1 - Room



Dimensions: 13'9" x 9'5"
Area: 130 sq. ft
Counted as Living Area: No

Heated: Yes
Finished: No
Enclosed: Yes
Contiguous: Yes
Permitted: Yes
Wet Space: No
Addition: No
Conversion: No

2 Floor 1 - Electrical Room



Dimensions: 9'5" x 13'6"
Area: 126 sq. ft
Counted as Living Area: No

Heated: No
Finished: No
Enclosed: Yes
Contiguous: Yes
Permitted: Yes
Wet Space: No
Addition: No
Conversion: No

3585 E Arapahoe Pl, Centennial, CO, US

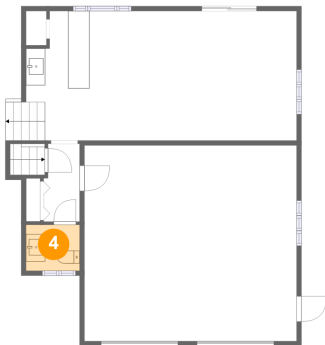
3 Floor 1 - Basement



Dimensions: 22'8" x 23'3"
Area: 423 sq. ft
Counted as Living Area: No

Heated: Yes
Finished: No
Enclosed: Yes
Contiguous: Yes
Permitted: Yes
Wet Space: No
Addition: No
Conversion: No

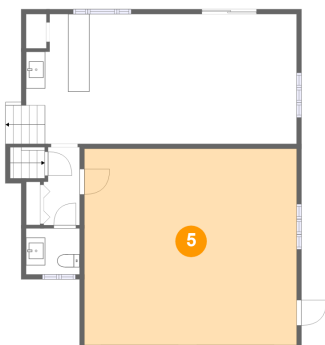
4 Floor 2 - Wc



Dimensions: 5'7" x 4'9"
Area: 27 sq. ft
Counted as Living Area: Yes

Heated: Yes
Finished: Yes
Enclosed: Yes
Contiguous: Yes
Permitted: Yes
Wet Space: Yes
Addition: No
Conversion: No

5 Floor 2 - Garage

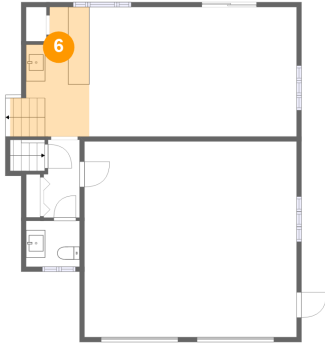


Dimensions: 22'1" x 20'4"
Area: 450 sq. ft
Counted as Living Area: No

Heated: No
Finished: No
Enclosed: Yes
Contiguous: Yes
Permitted: Yes
Wet Space: No
Addition: No
Conversion: No

3585 E Arapahoe Pl, Centennial, CO, US

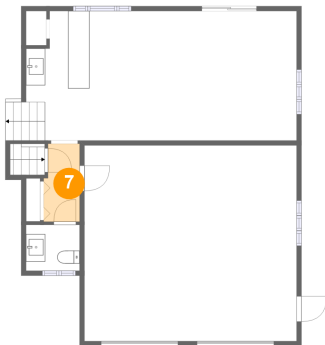
6 Floor 2 - Wet Bar



Dimensions: 6'7" x 13'5"
Area: 86 sq. ft
Counted as Living Area:
Yes

Heated: Yes
Finished: Yes
Enclosed: Yes
Contiguous:
Yes
Permitted: Yes
Wet Space: No
Addition: No
Conversion: No

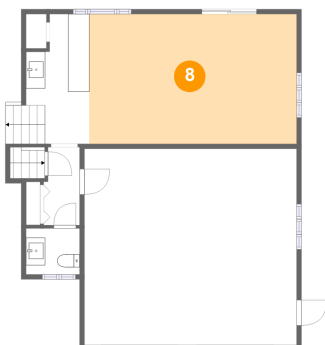
7 Floor 2 - Hall



Dimensions: 3'9" x 8'1"
Area: 29 sq. ft
Counted as Living Area:
Yes

Heated: Yes
Finished: Yes
Enclosed: Yes
Contiguous:
Yes
Permitted: Yes
Wet Space: No
Addition: No
Conversion: No

8 Floor 2 - Family Room

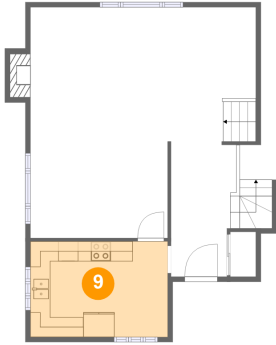


Dimensions: 21'7" x 13'6"
Area: 291 sq. ft
Counted as Living Area:
Yes

Heated: Yes
Finished: Yes
Enclosed: Yes
Contiguous:
Yes
Permitted: Yes
Wet Space: No
Addition: No
Conversion: No

3585 E Arapahoe Pl, Centennial, CO, US

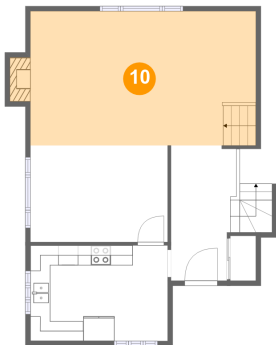
9 Floor 3 - Kitchen



Dimensions: 13'9" x 9'7"
Area: 132 sq. ft
Counted as Living Area:
Yes

Heated: Yes
Finished: Yes
Enclosed: Yes
Contiguous:
Yes
Permitted: Yes
Wet Space: No
Addition: No
Conversion: No

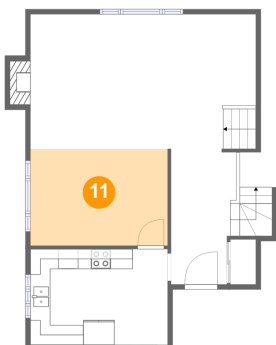
10 Floor 3 - Living Room



Dimensions: 22'8" x 13'6"
Area: 314 sq. ft
Counted as Living Area:
Yes

Heated: Yes
Finished: Yes
Enclosed: Yes
Contiguous:
Yes
Permitted: Yes
Wet Space: No
Addition: No
Conversion: No

11 Floor 3 - Dining Area

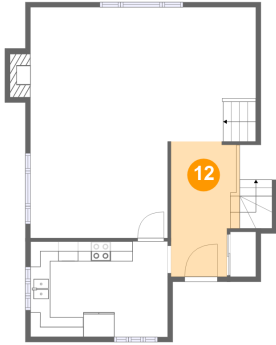


Dimensions: 13'9" x 9'8"
Area: 133 sq. ft
Counted as Living Area:
Yes

Heated: Yes
Finished: Yes
Enclosed: Yes
Contiguous:
Yes
Permitted: Yes
Wet Space: No
Addition: No
Conversion: No

3585 E Arapahoe Pl, Centennial, CO, US

12 Floor 3 - Foyer



Dimensions: 6'7" x 13'7"
Area: 87 sq. ft
Counted as Living Area:
Yes

Heated: Yes
Finished: Yes
Enclosed: Yes
Contiguous:
Yes
Permitted: Yes
Wet Space: No
Addition: No
Conversion: No

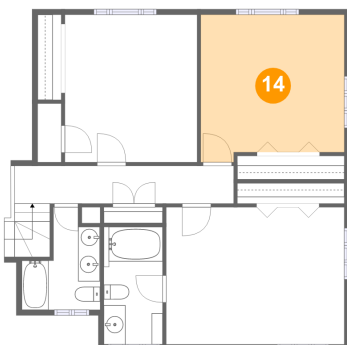
13 Floor 4 - Bath



Dimensions: 7'2" x 9'5"
Area: 50 sq. ft
Counted as Living Area:
Yes

Heated: Yes
Finished: Yes
Enclosed: Yes
Contiguous:
Yes
Permitted: Yes
Wet Space: Yes
Addition: No
Conversion: No

14 Floor 4 - Bedroom

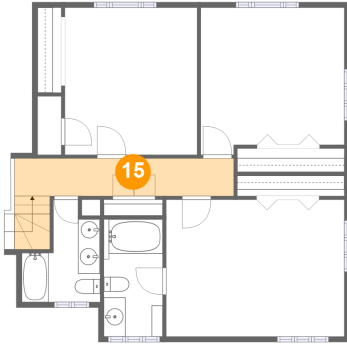


Dimensions: 13'2" x 13'6"
Area: 169 sq. ft
Counted as Living Area:
Yes

Heated: Yes
Finished: Yes
Enclosed: Yes
Contiguous:
Yes
Permitted: Yes
Wet Space: No
Addition: No
Conversion: No

3585 E Arapahoe Pl, Centennial, CO, US

15 Floor 4 - Hall



Dimensions: 20'2" x 3'5"
Area: 85 sq. ft
Counted as Living Area:
Yes

Heated: Yes
Finished: Yes
Enclosed: Yes
Contiguous:
Yes
Permitted: Yes
Wet Space: No
Addition: No
Conversion: No

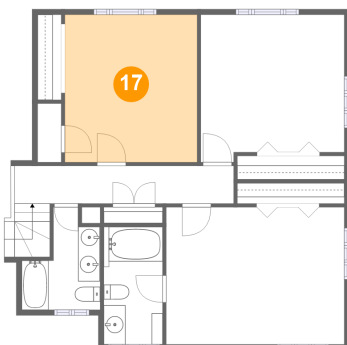
16 Floor 4 - Bath



Dimensions: 5'5" x 10'9"
Area: 58 sq. ft
Counted as Living Area:
Yes

Heated: Yes
Finished: Yes
Enclosed: Yes
Contiguous:
Yes
Permitted: Yes
Wet Space: Yes
Addition: No
Conversion: No

17 Floor 4 - Bedroom



Dimensions: 12'2" x 13'6"
Area: 164 sq. ft
Counted as Living Area:
Yes

Heated: Yes
Finished: Yes
Enclosed: Yes
Contiguous:
Yes
Permitted: Yes
Wet Space: No
Addition: No
Conversion: No

3585 E Arapahoe Pl, Centennial, CO, US

18 Floor 4 - Primary Bedroom



Dimensions: 16'4" x 12'7"
Area: 206 sq. ft
Counted as Living Area:
Yes

Heated: Yes
Finished: Yes
Enclosed: Yes
Contiguous:
Yes
Permitted: Yes
Wet Space: No
Addition: No
Conversion: No