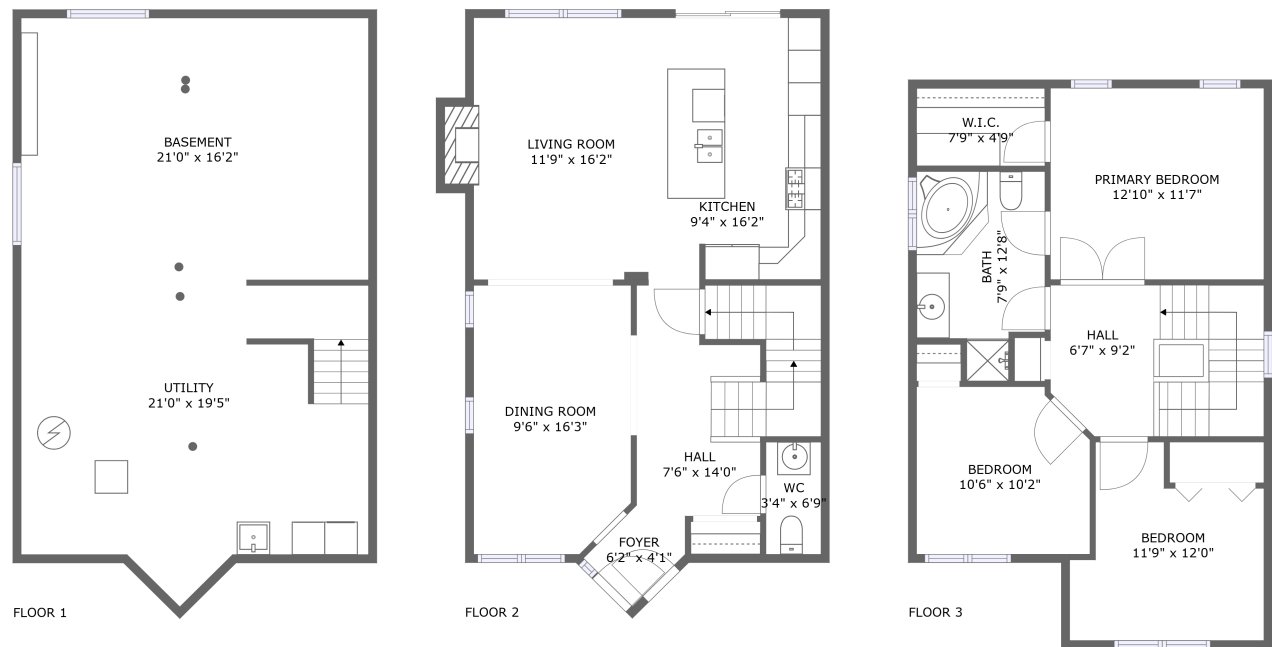


Home report

1056 Rocky Harbour Crescent, Riverside South, Gloucester,  
Ontario, Canada, K1V 1V3




**Total Area: 1347 sq. ft**

Below Ground: 0 sq. ft, Floor 2: 694 sq. ft, Floor 3: 653 sq. ft


Excluded: Basement 340 sq. ft, Utility 352 sq. ft, Fireplace 10 sq. ft, Walls: 164 sq. ft

**Property summary**

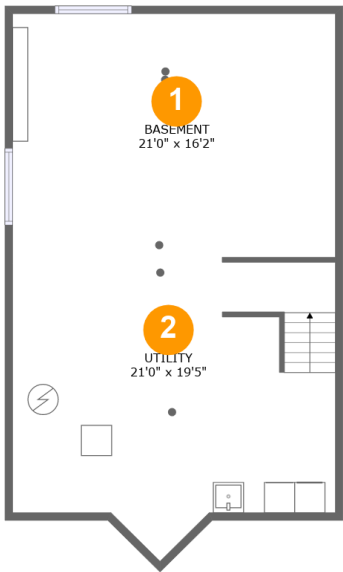
 **3** Floors

 **3** Bedrooms

 **1** Bathrooms

 **1** Half baths

1056 Rocky Harbour Crescent, Riverside South, Gloucester,  
Ontario, Canada, K1V 1V3

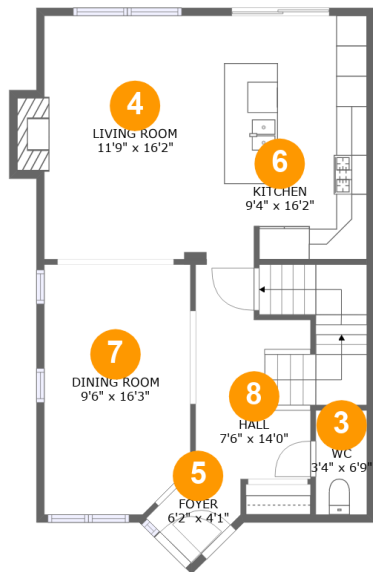


Room dimensions

Floor 1 Below ground Total:0sqft    Excluded: 692sqft

#		Max Dimensions	sqft	Included
1	Basement	21'0" x 16'2"	337 sq. ft	No
2	Utility	21'0" x 19'5"	352 sq. ft	No

1056 Rocky Harbour Crescent, Riverside South, Gloucester,  
Ontario, Canada, K1V 1V3



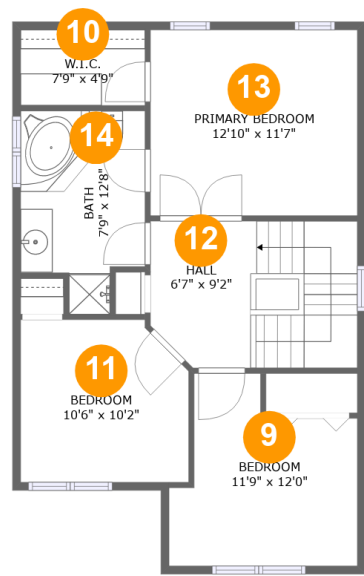
Room dimensions

Floor 2 Total:694sqft    Excluded: 10sqft

#		Max Dimensions	sqft	Included
3	WC	3'4" x 6'9"	23 sq. ft	Yes
4	Living Room	11'9" x 16'2"	195 sq. ft	Yes
5	Foyer	6'2" x 4'1"	22 sq. ft	Yes
6	Kitchen	9'4" x 16'2"	147 sq. ft	Yes
7	Dining Room	9'6" x 16'3"	151 sq. ft	Yes
8	Hall	7'6" x 14'0"	134 sq. ft	Yes

Home report

1056 Rocky Harbour Crescent, Riverside South, Gloucester,  
Ontario, Canada, K1V 1V3



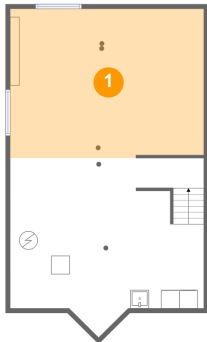
Room dimensions

Floor 3 Total:653sqft   Excluded: 0sqft

#		Max Dimensions	sqft	Included
9	Bedroom	11'9" x 12'0"	113 sq. ft	Yes
10	W.I.C.	7'9" x 4'9"	37 sq. ft	Yes
11	Bedroom	10'6" x 10'2"	101 sq. ft	Yes
12	Hall	6'7" x 9'2"	115 sq. ft	Yes
13	Primary Bedroom	12'10" x 11'7"	149 sq. ft	Yes
14	Bath	7'9" x 12'8"	84 sq. ft	Yes

1056 Rocky Harbour Crescent, Riverside South, Gloucester,  
Ontario, Canada, K1V 1V3

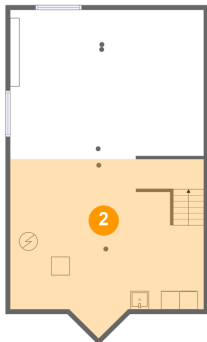
1 Floor 1 - Basement



Max Dimensions: 21'0" x 16'2"  
Calculated Area: 337 sq. ft  
Included: No

Heated: Yes  
Finished: No  
Enclosed: Yes  
Contiguous: Yes  
Permitted: Yes  
Wet space: No  
Addition: No  
Conversion: No

2 Floor 1 - Utility

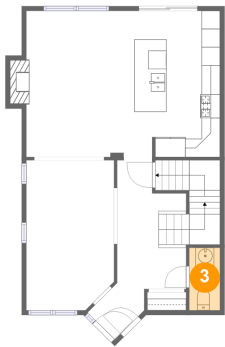


Max Dimensions: 21'0" x 19'5"  
Calculated Area: 352 sq. ft  
Included: No

Heated: Yes  
Finished: No  
Enclosed: Yes  
Contiguous: Yes  
Permitted: Yes  
Wet space: No  
Addition: No  
Conversion: No

1056 Rocky Harbour Crescent, Riverside South, Gloucester,  
Ontario, Canada, K1V 1V3

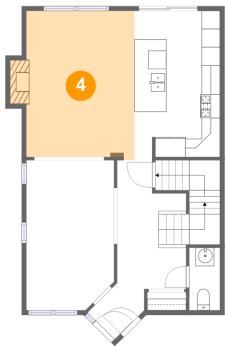
3 Floor 2 - WC



Max Dimensions: 3'4" x 6'9"  
Calculated Area: 23 sq. ft  
Included: Yes

Heated: Yes  
Finished: Yes  
Enclosed: Yes  
Contiguous: Yes  
Permitted: Yes  
Wet space: Yes  
Addition: No  
Conversion: No

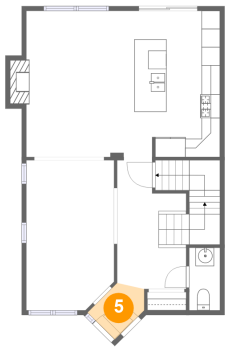
4 Floor 2 - Living Room



Max Dimensions: 11'9" x 16'2"  
Calculated Area: 195 sq. ft  
Included: Yes

Heated: Yes  
Finished: Yes  
Enclosed: Yes  
Contiguous: Yes  
Permitted: Yes  
Wet space: No  
Addition: No  
Conversion: No

5 Floor 2 - Foyer

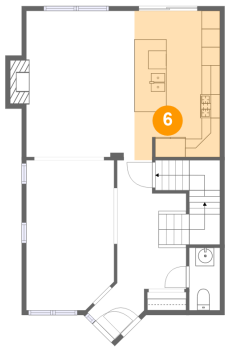


Max Dimensions: 6'2" x 4'1"  
Calculated Area: 22 sq. ft  
Included: Yes

Heated: Yes  
Finished: Yes  
Enclosed: Yes  
Contiguous: Yes  
Permitted: Yes  
Wet space: No  
Addition: No  
Conversion: No

1056 Rocky Harbour Crescent, Riverside South, Gloucester,  
Ontario, Canada, K1V 1V3

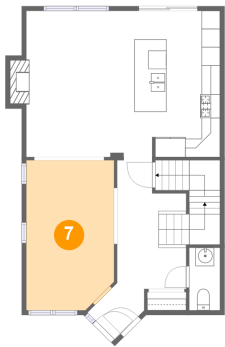
6 Floor 2 - Kitchen



Max Dimensions: 9'4" x 16'2"  
Calculated Area: 147 sq. ft  
Included: Yes

Heated: Yes  
Finished: Yes  
Enclosed: Yes  
Contiguous: Yes  
Permitted: Yes  
Wet space: No  
Addition: No  
Conversion: No

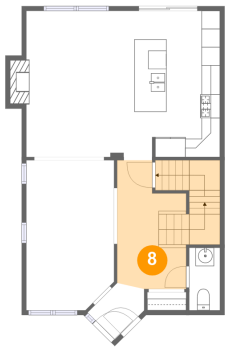
7 Floor 2 - Dining Room



Max Dimensions: 9'6" x 16'3"  
Calculated Area: 151 sq. ft  
Included: Yes

Heated: Yes  
Finished: Yes  
Enclosed: Yes  
Contiguous: Yes  
Permitted: Yes  
Wet space: No  
Addition: No  
Conversion: No

8 Floor 2 - Hall

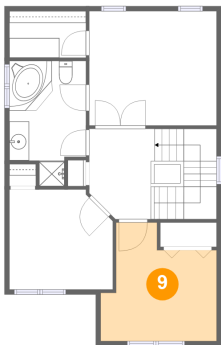


Max Dimensions: 7'6" x 14'0"  
Calculated Area: 134 sq. ft  
Included: Yes

Heated: Yes  
Finished: Yes  
Enclosed: Yes  
Contiguous: Yes  
Permitted: Yes  
Wet space: No  
Addition: No  
Conversion: No

1056 Rocky Harbour Crescent, Riverside South, Gloucester,  
Ontario, Canada, K1V 1V3

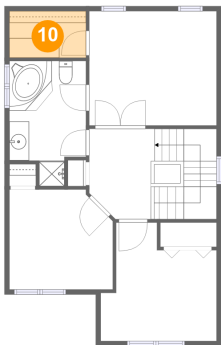
9 Floor 3 - Bedroom



Max Dimensions: 11'9" x 12'0"  
Calculated Area: 113 sq. ft  
Included: Yes

Heated: Yes  
Finished: Yes  
Enclosed: Yes  
Contiguous: Yes  
Permitted: Yes  
Wet space: No  
Addition: No  
Conversion: No

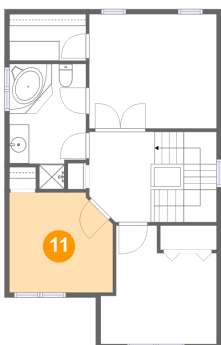
10 Floor 3 - W.I.C.



Max Dimensions: 7'9" x 4'9"  
Calculated Area: 37 sq. ft  
Included: Yes

Heated: Yes  
Finished: Yes  
Enclosed: Yes  
Contiguous: Yes  
Permitted: Yes  
Wet space: No  
Addition: No  
Conversion: No

11 Floor 3 - Bedroom



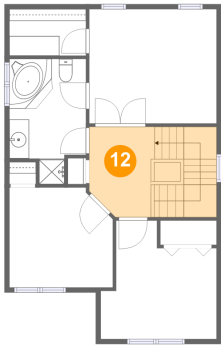
Max Dimensions: 10'6" x 10'2"  
Calculated Area: 101 sq. ft  
Included: Yes

Heated: Yes  
Finished: Yes  
Enclosed: Yes  
Contiguous: Yes  
Permitted: Yes  
Wet space: No  
Addition: No  
Conversion: No



1056 Rocky Harbour Crescent, Riverside South, Gloucester,  
Ontario, Canada, K1V 1V3

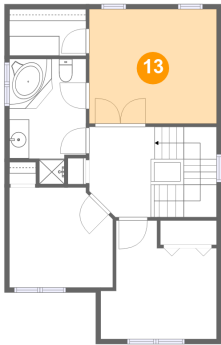
12 Floor 3 - Hall



Max Dimensions: 6'7" x 9'2"  
Calculated Area: 115 sq. ft  
Included: Yes

Heated: Yes  
Finished: Yes  
Enclosed: Yes  
Contiguous: Yes  
Permitted: Yes  
Wet space: No  
Addition: No  
Conversion: No

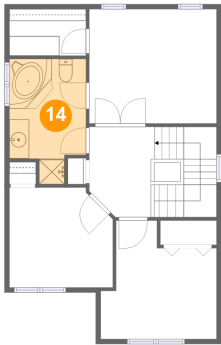
13 Floor 3 - Primary Bedroom



Max Dimensions: 12'10" x 11'7"  
Calculated Area: 149 sq. ft  
Included: Yes

Heated: Yes  
Finished: Yes  
Enclosed: Yes  
Contiguous: Yes  
Permitted: Yes  
Wet space: No  
Addition: No  
Conversion: No

14 Floor 3 - Bath



Max Dimensions: 7'9" x 12'8"  
Calculated Area: 84 sq. ft  
Included: Yes

Heated: Yes  
Finished: Yes  
Enclosed: Yes  
Contiguous: Yes  
Permitted: Yes  
Wet space: Yes  
Addition: No  
Conversion: No