

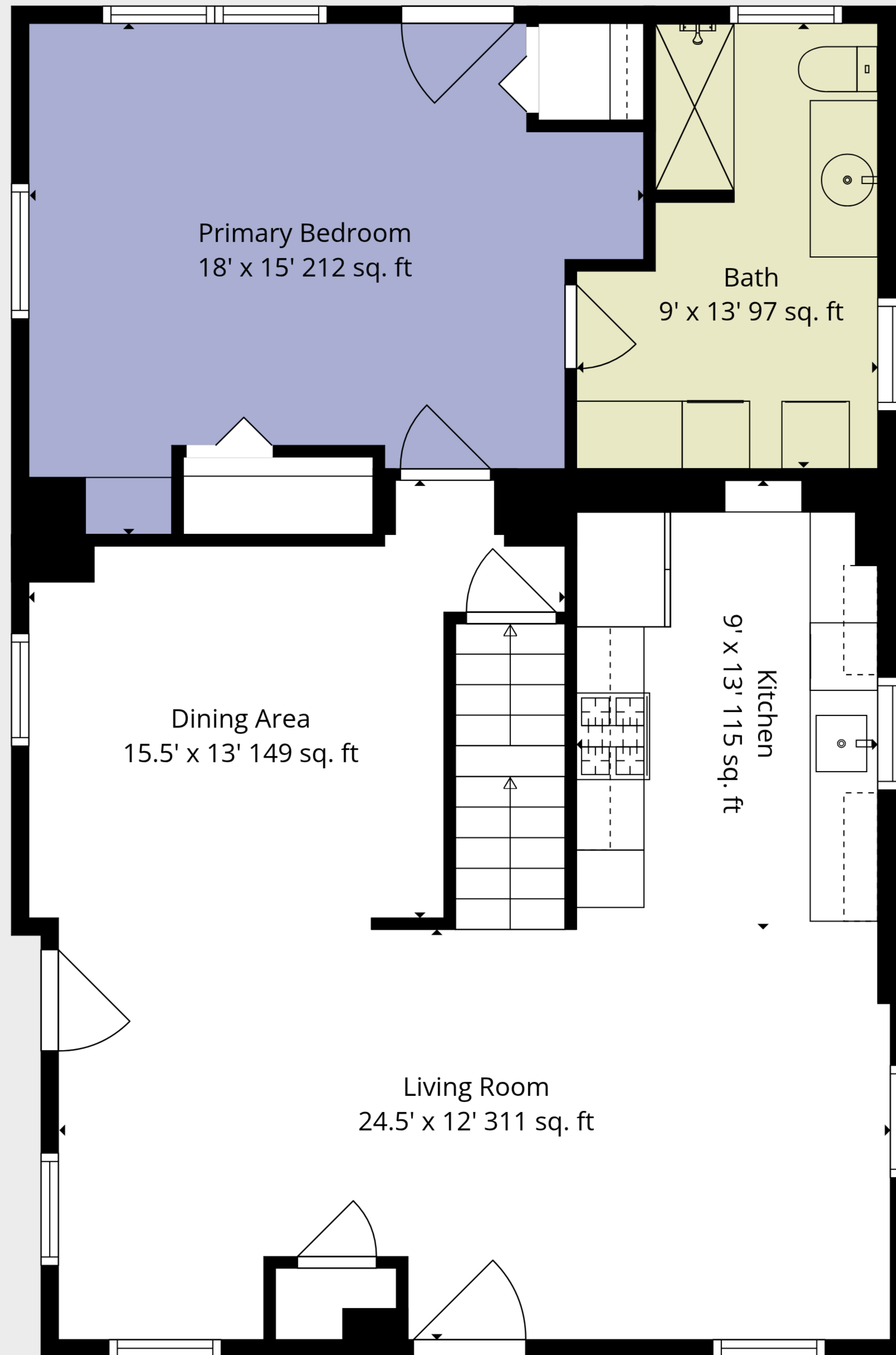
Basement  
24' x 11' 260 sq. ft

Storage  
24' x 11.5' 274 sq. ft

**TOTAL: 1878 sq. ft**

BELOW GRADE: 0 sq. ft, FLOOR 2: 945 sq. ft, FLOOR 3: 933 sq. ft  
EXCLUDED AREAS: STORAGE: 282 sq. ft, BASEMENT: 260 sq. ft, WALLS: 188 sq. ft





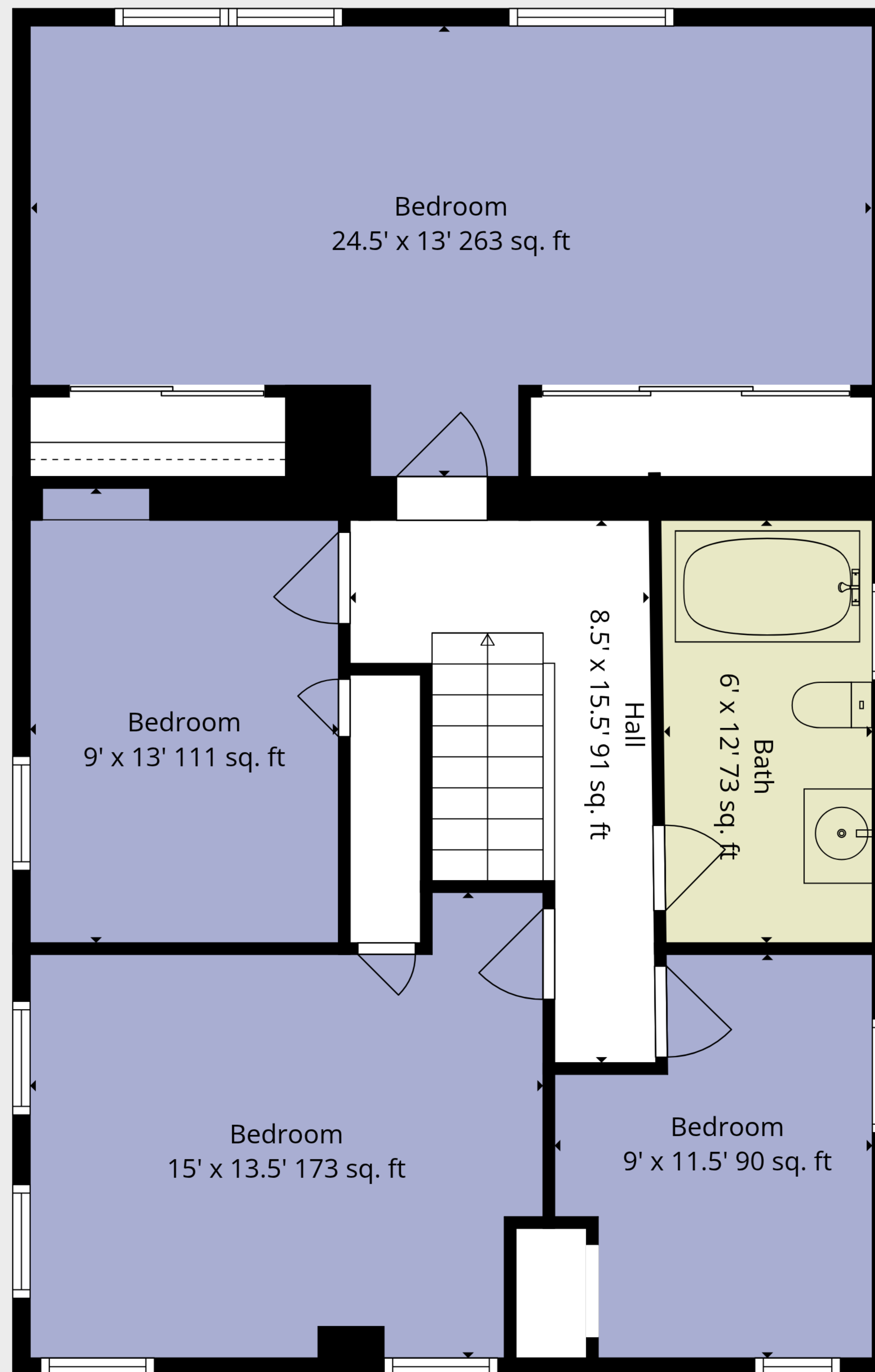
**TOTAL: 1878 sq. ft**

BELOW GRADE: 0 sq. ft, FLOOR 2: 945 sq. ft, FLOOR 3: 933 sq. ft

EXCLUDED AREAS: STORAGE: 282 sq. ft, BASEMENT: 260 sq. ft, WALLS: 188 sq. ft

Information Is Calculated By [Cwalkerphotography.com](http://Cwalkerphotography.com); Deemed Highly Reliable But Not Guaranteed.



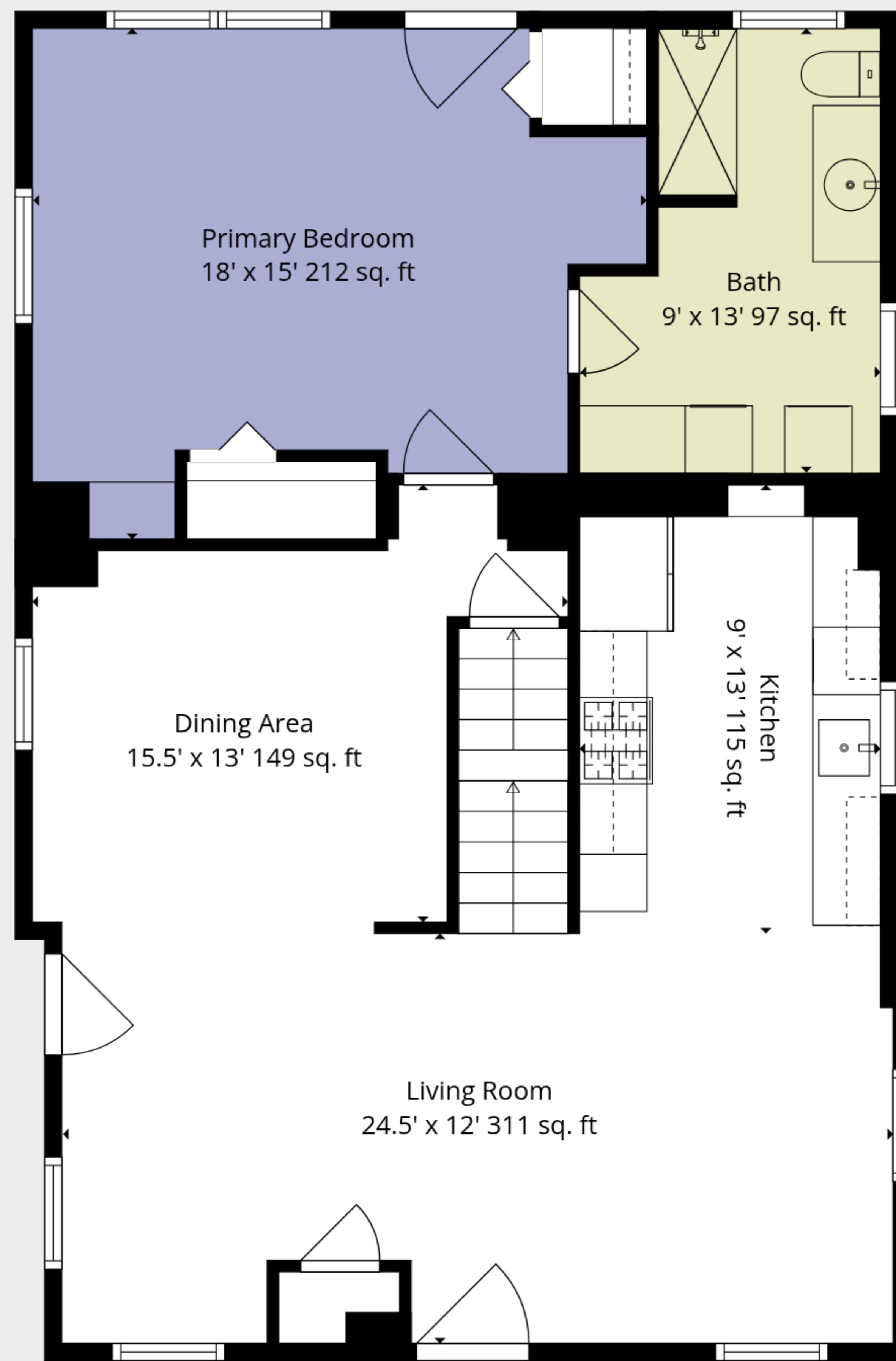


**TOTAL: 1878 sq. ft**

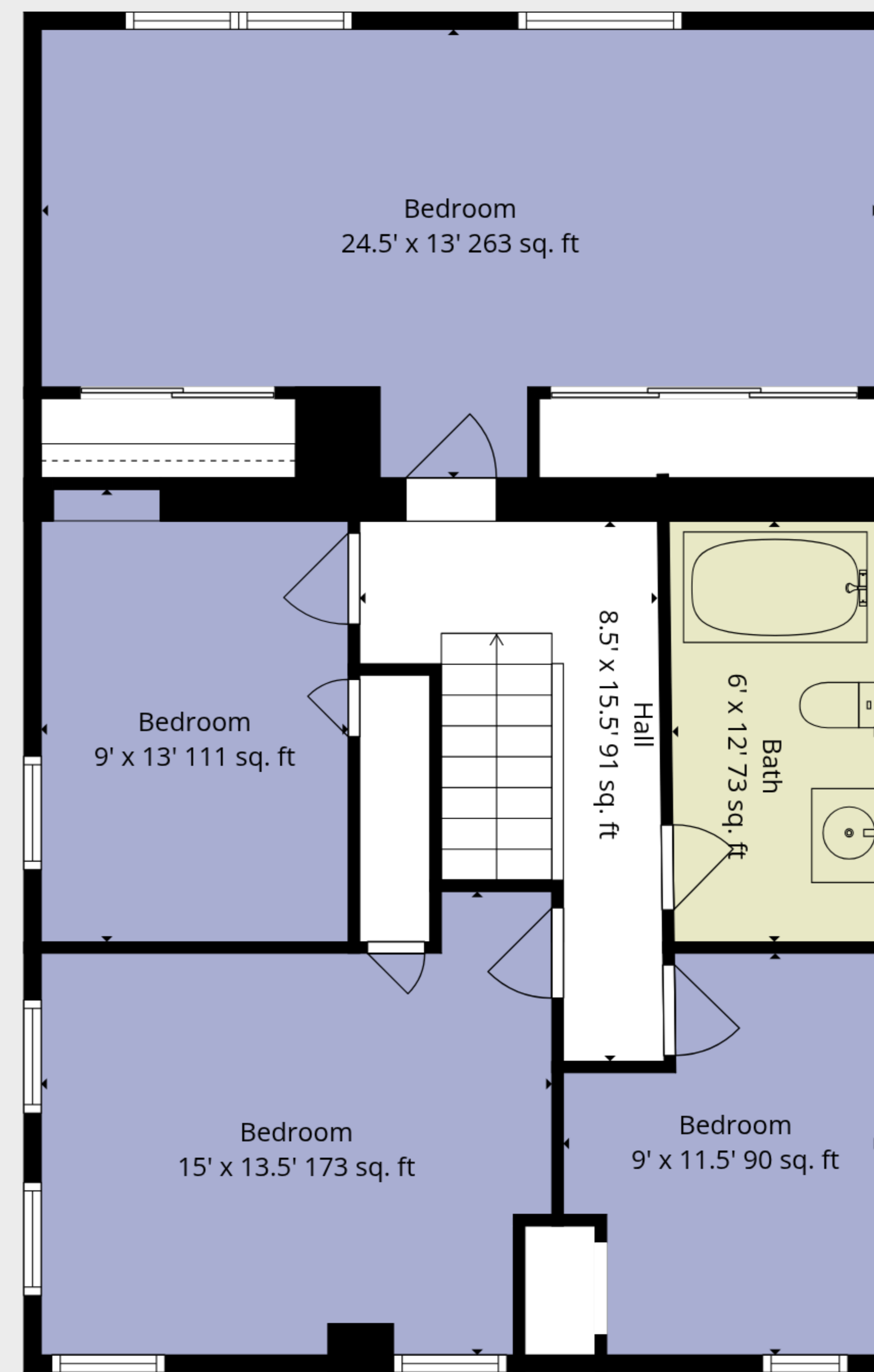
BELOW GRADE: 0 sq. ft, FLOOR 2: 945 sq. ft, FLOOR 3: 933 sq. ft

EXCLUDED AREAS: STORAGE: 282 sq. ft, BASEMENT: 260 sq. ft, WALLS: 188 sq. ft

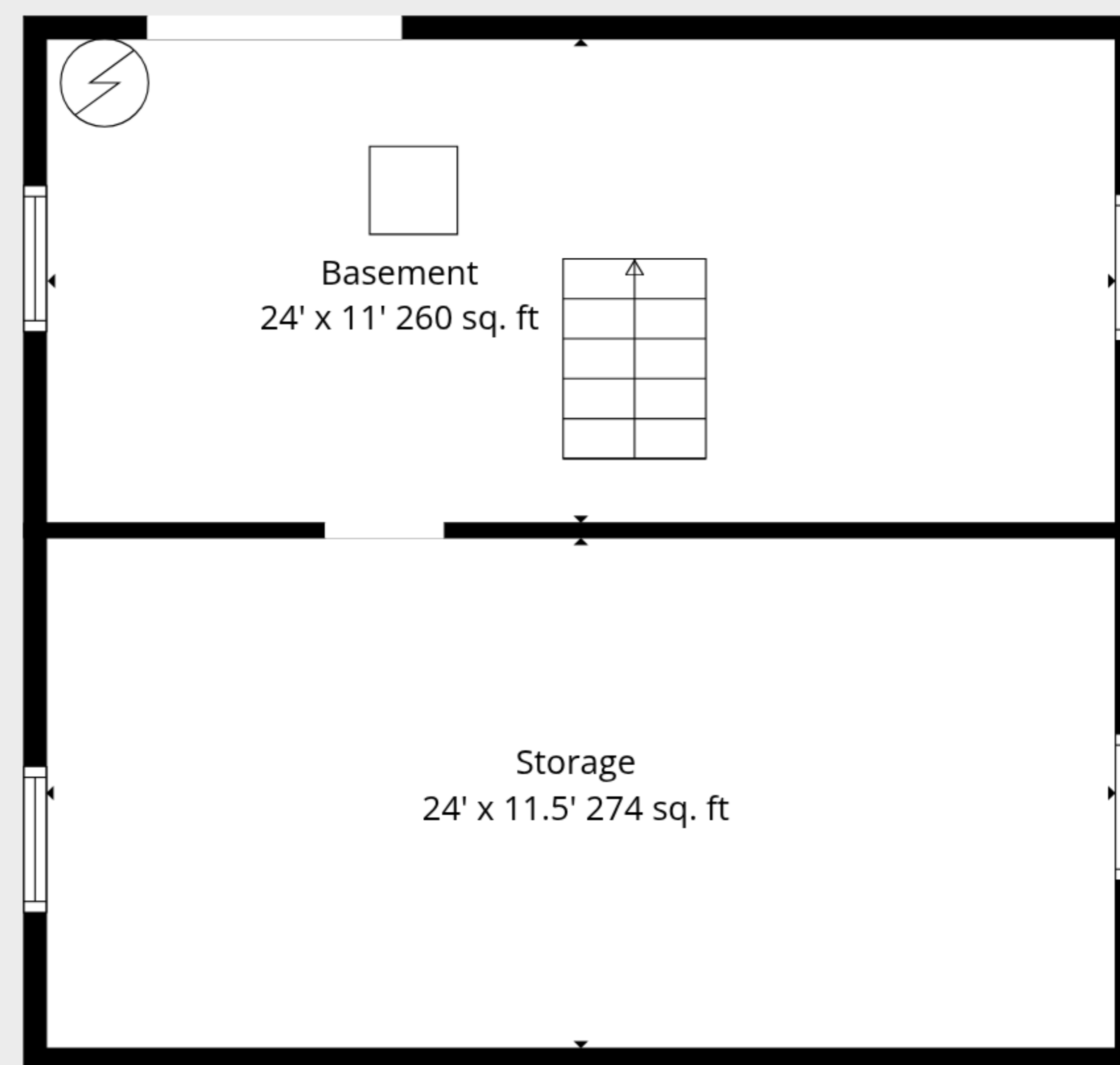




Floor 2



Floor 3



Floor 1

**TOTAL: 1878 sq. ft**

BELOW GRADE: 0 sq. ft, FLOOR 2: 945 sq. ft, FLOOR 3: 933 sq. ft

EXCLUDED AREAS: STORAGE: 282 sq. ft, BASEMENT: 260 sq. ft, WALLS: 188 sq. ft

Information Is Calculated By Cwalkerphotography.com; Deemed Highly Reliable But Not Guaranteed.

