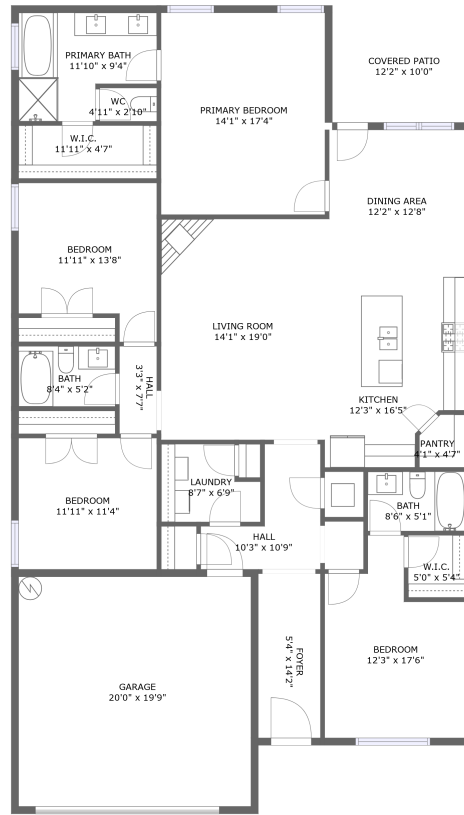



22584 Big Oak Drive, Athens, Limestone County, Alabama, United States, 35613



FLOOR 1

Property summary


 **1** Garages

 **4** Bedrooms

 **3** Bathrooms

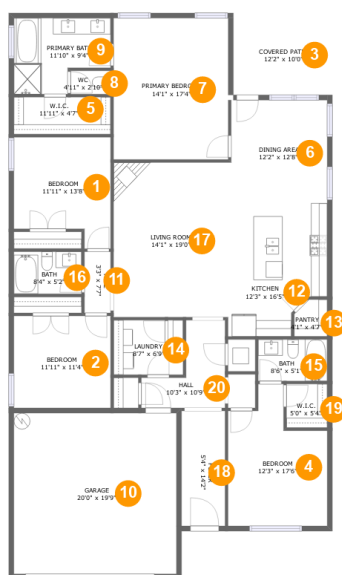
 **0** Half baths

 **1** Floors

 **2,116**
Gross living
area sqft

 **2,664**
Total sqft

22584 Big Oak Drive, Athens, Limestone County,
Alabama, United States, 35613



Room dimensions

Floor 1

Total sqft: 2664 Living area: 2116

#		Dimensions	sqft	Counted as living area
1	Bedroom	11'11" x 13'8"	142 sq. ft	Yes
2	Bedroom	11'11" x 11'4"	135 sq. ft	Yes
3	Covered Patio	12'2" x 10'0"	123 sq. ft	No
4	Bedroom	12'3" x 17'6"	170 sq. ft	Yes
5	W.I.C.	11'11" x 4'7"	54 sq. ft	Yes
6	Dining Area	12'2" x 12'8"	152 sq. ft	Yes
7	Primary Bedroom	14'1" x 17'4"	246 sq. ft	Yes
8	WC	4'11" x 2'10"	14 sq. ft	Yes
9	Primary Bath	11'10" x 9'4"	94 sq. ft	Yes
10	Garage	20'0" x 19'9"	396 sq. ft	No
11	Hall	3'3" x 7'7"	24 sq. ft	Yes

Scan captured on Tue, 11 Mar 2025 17:12:48 GMT

Information is calculated by Cubicasa technology deemed highly reliable but not guaranteed.

**22584 Big Oak Drive, Athens, Limestone County,
Alabama, United States, 35613**

#		Dimensions	sqft	Counted as living area
12	Kitchen	12'3" x 16'5"	180 sq. ft	Yes
13	Pantry	4'1" x 4'7"	17 sq. ft	Yes
14	Laundry	8'7" x 6'9"	50 sq. ft	Yes
15	Bath	8'6" x 5'1"	43 sq. ft	Yes
16	Bath	8'4" x 5'2"	43 sq. ft	Yes
17	Living Room	14'1" x 19'0"	268 sq. ft	Yes
18	Foyer	5'4" x 14'2"	76 sq. ft	Yes
19	W.I.C.	5'0" x 5'4"	27 sq. ft	Yes
20	Hall	10'3" x 10'9"	72 sq. ft	Yes

**22584 Big Oak Drive, Athens, Limestone County,
Alabama, United States, 35613**

1 Floor 1 - Bedroom



Dimensions: 11'11" x 13'8"
Area: 142 sq. ft
Counted as living area: Yes

Heated: Yes
Finished: Yes
Enclosed: Yes
Contiguous: Yes
Permitted: Yes
Wet space: No
Addition: No
Conversion: No

2 Floor 1 - Bedroom



Dimensions: 11'11" x 11'4"
Area: 135 sq. ft
Counted as living area: Yes

Heated: Yes
Finished: Yes
Enclosed: Yes
Contiguous: Yes
Permitted: Yes
Wet space: No
Addition: No
Conversion: No

22584 Big Oak Drive, Athens, Limestone County,
Alabama, United States, 35613

3 Floor 1 - Covered Patio



Dimensions: 12'2" x 10'0"
Area: 123 sq. ft
Counted as living area: No

Heated: No
Finished: Yes
Enclosed: No
Contiguous: Yes
Permitted: Yes
Wet space: No
Addition: No
Conversion: No

4 Floor 1 - Bedroom



Dimensions: 12'3" x 17'6"
Area: 170 sq. ft
Counted as living area: Yes

Heated: Yes
Finished: Yes
Enclosed: Yes
Contiguous: Yes
Permitted: Yes
Wet space: No
Addition: No
Conversion: No

5 Floor 1 - W.I.C.

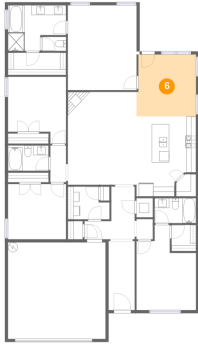


Dimensions: 11'11" x 4'7"
Area: 54 sq. ft
Counted as living area: Yes

Heated: Yes
Finished: Yes
Enclosed: Yes
Contiguous: Yes
Permitted: Yes
Wet space: No
Addition: No
Conversion: No

22584 Big Oak Drive, Athens, Limestone County,
Alabama, United States, 35613

6 Floor 1 - Dining Area



Dimensions: 12'2" x 12'8"
Area: 152 sq. ft
Counted as living area: Yes

Heated: Yes
Finished: Yes
Enclosed: Yes
Contiguous: Yes
Permitted: Yes
Wet space: No
Addition: No
Conversion: No

7 Floor 1 - Primary Bedroom



Dimensions: 14'1" x 17'4"
Area: 246 sq. ft
Counted as living area: Yes

Heated: Yes
Finished: Yes
Enclosed: Yes
Contiguous: Yes
Permitted: Yes
Wet space: No
Addition: No
Conversion: No

8 Floor 1 - WC



Dimensions: 4'11" x 2'10"
Area: 14 sq. ft
Counted as living area: Yes

Heated: Yes
Finished: Yes
Enclosed: Yes
Contiguous: Yes
Permitted: Yes
Wet space: Yes
Addition: No
Conversion: No

**22584 Big Oak Drive, Athens, Limestone County,
Alabama, United States, 35613**

9 Floor 1 - Primary Bath



Dimensions: 11'10" x 9'4"
Area: 94 sq. ft
Counted as living area: Yes

Heated: Yes
Finished: Yes
Enclosed: Yes
Contiguous: Yes
Permitted: Yes
Wet space: Yes
Addition: No
Conversion: No

10 Floor 1 - Garage



Dimensions: 20'0" x 19'9"
Area: 396 sq. ft
Counted as living area: No

Heated: No
Finished: No
Enclosed: Yes
Contiguous: Yes
Permitted: Yes
Wet space: No
Addition: No
Conversion: No

11 Floor 1 - Hall



Dimensions: 3'3" x 7'7"
Area: 24 sq. ft
Counted as living area: Yes

Heated: Yes
Finished: Yes
Enclosed: Yes
Contiguous: Yes
Permitted: Yes
Wet space: No
Addition: No
Conversion: No

22584 Big Oak Drive, Athens, Limestone County,
Alabama, United States, 35613

12 Floor 1 - Kitchen



Dimensions: 12'3" x 16'5"
Area: 180 sq. ft
Counted as living area: Yes

Heated: Yes
Finished: Yes
Enclosed: Yes
Contiguous: Yes
Permitted: Yes
Wet space: No
Addition: No
Conversion: No

13 Floor 1 - Pantry



Dimensions: 4'1" x 4'7"
Area: 17 sq. ft
Counted as living area: Yes

Heated: Yes
Finished: Yes
Enclosed: Yes
Contiguous: Yes
Permitted: Yes
Wet space: No
Addition: No
Conversion: No

14 Floor 1 - Laundry



Dimensions: 8'7" x 6'9"
Area: 50 sq. ft
Counted as living area: Yes

Heated: Yes
Finished: Yes
Enclosed: Yes
Contiguous: Yes
Permitted: Yes
Wet space: No
Addition: No
Conversion: No

22584 Big Oak Drive, Athens, Limestone County,
Alabama, United States, 35613

15 Floor 1 - Bath



Dimensions: 8'6" x 5'1"
Area: 43 sq. ft
Counted as living area: Yes

Heated: Yes
Finished: Yes
Enclosed: Yes
Contiguous: Yes
Permitted: Yes
Wet space: Yes
Addition: No
Conversion: No

16 Floor 1 - Bath



Dimensions: 8'4" x 5'2"
Area: 43 sq. ft
Counted as living area: Yes

Heated: Yes
Finished: Yes
Enclosed: Yes
Contiguous: Yes
Permitted: Yes
Wet space: Yes
Addition: No
Conversion: No

17 Floor 1 - Living Room



Dimensions: 14'1" x 19'0"
Area: 268 sq. ft
Counted as living area: Yes

Heated: Yes
Finished: Yes
Enclosed: Yes
Contiguous: Yes
Permitted: Yes
Wet space: No
Addition: No
Conversion: No

22584 Big Oak Drive, Athens, Limestone County,
Alabama, United States, 35613

18 Floor 1 - Foyer



Dimensions: 5'4" x 14'2"
Area: 76 sq. ft
Counted as living area: Yes

Heated: Yes
Finished: Yes
Enclosed: Yes
Contiguous: Yes
Permitted: Yes
Wet space: No
Addition: No
Conversion: No

19 Floor 1 - W.I.C.



Dimensions: 5'0" x 5'4"
Area: 27 sq. ft
Counted as living area: Yes

Heated: Yes
Finished: Yes
Enclosed: Yes
Contiguous: Yes
Permitted: Yes
Wet space: No
Addition: No
Conversion: No

20 Floor 1 - Hall



Dimensions: 10'3" x 10'9"
Area: 72 sq. ft
Counted as living area: Yes

Heated: Yes
Finished: Yes
Enclosed: Yes
Contiguous: Yes
Permitted: Yes
Wet space: No
Addition: No
Conversion: No