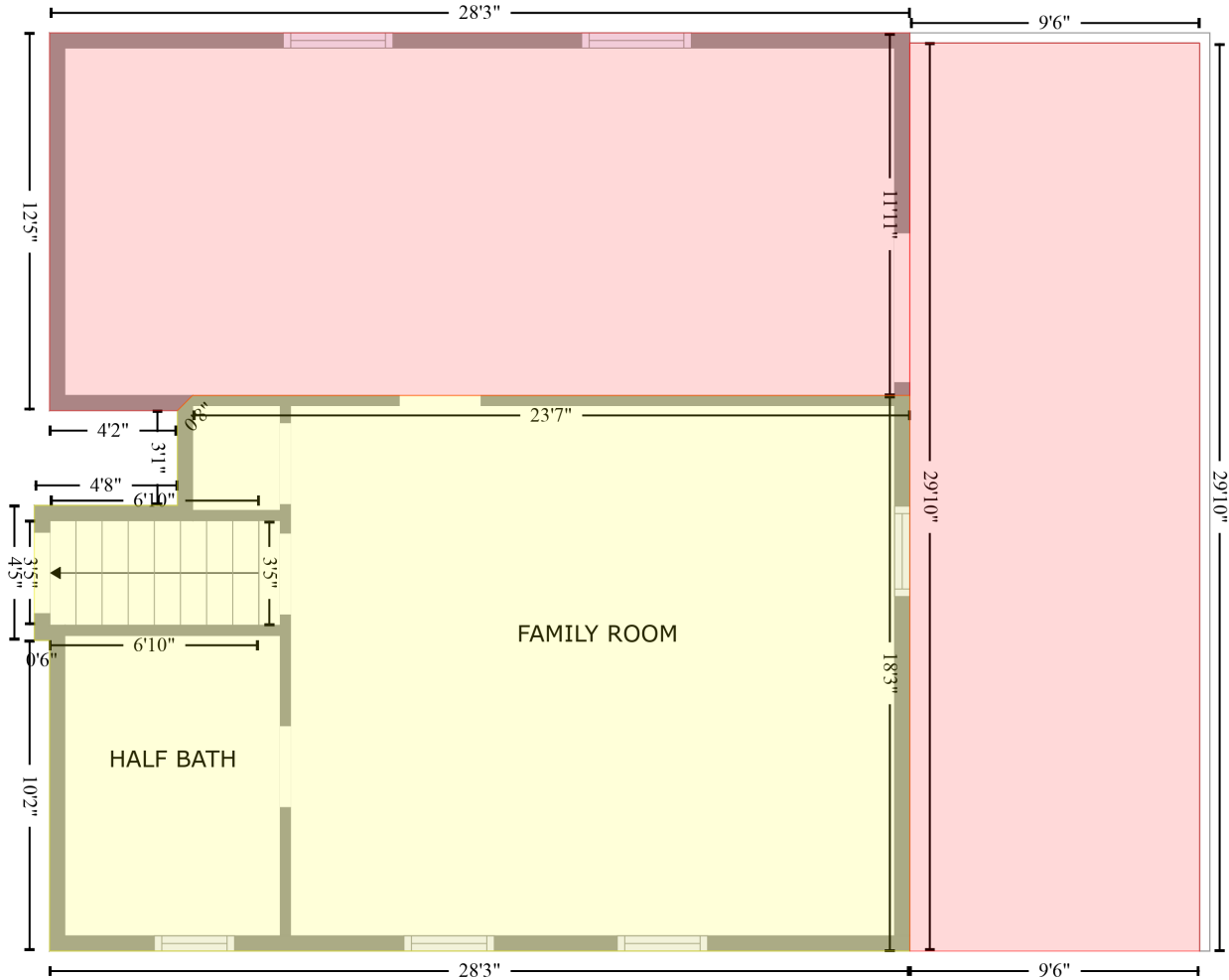


302 Ridgewood Street, Easley, Pickens County, South Carolina, United States, 29642

Gross Living Area: 1480 sq. ft

STORAGE (1)
[AREA: 339]

PATIO (2)
[AREA: 284]



FLOOR 1
[AREA: 503]

Space	Area (sq. ft)	Calculation <small>Coordinate Polygon Area Algorithm using inches</small>
FLOOR 1 (Living area)	503	$-\left((758.5 + 758.5) * (662.7 - 881.7) + (758.5 + 419.3) * (881.7 - 881.7) + (419.3 + 419.3) * (881.7 - 759.3) + (419.3 + 413.3) * (759.3 - 759.3) + (413.3 + 413.3) * (759.3 - 706) + (413.3 + 469.7) * (706 - 706) + (469.7 + 469.7) * (706 - 668.7) + (469.7 + 475.7) * (668.7 - 662.7) + (475.7 + 758.5) * (662.7 - 662.7)\right) * 0.5 * 0.00694$
STORAGE (Non-living area)	339	$-\left((758.5 + 758.5) * (519.7 - 662.7) + (758.5 + 475.7) * (662.7 - 662.7) + (475.7 + 469.7) * (662.7 - 668.7) + (469.7 + 419.3) * (668.7 - 668.7) + (419.3 + 419.3) * (668.7 - 519.7) + (419.3 + 758.5) * (519.7 - 519.7)\right) * 0.5 * 0.00694$
PATIO	284	$-\left((872.7 + 872.7) * (523.7 - 881.7) + (872.7 + 758.5) * (881.7 - 881.7) + (758.5 + 758.5) * (881.7 - \right.$

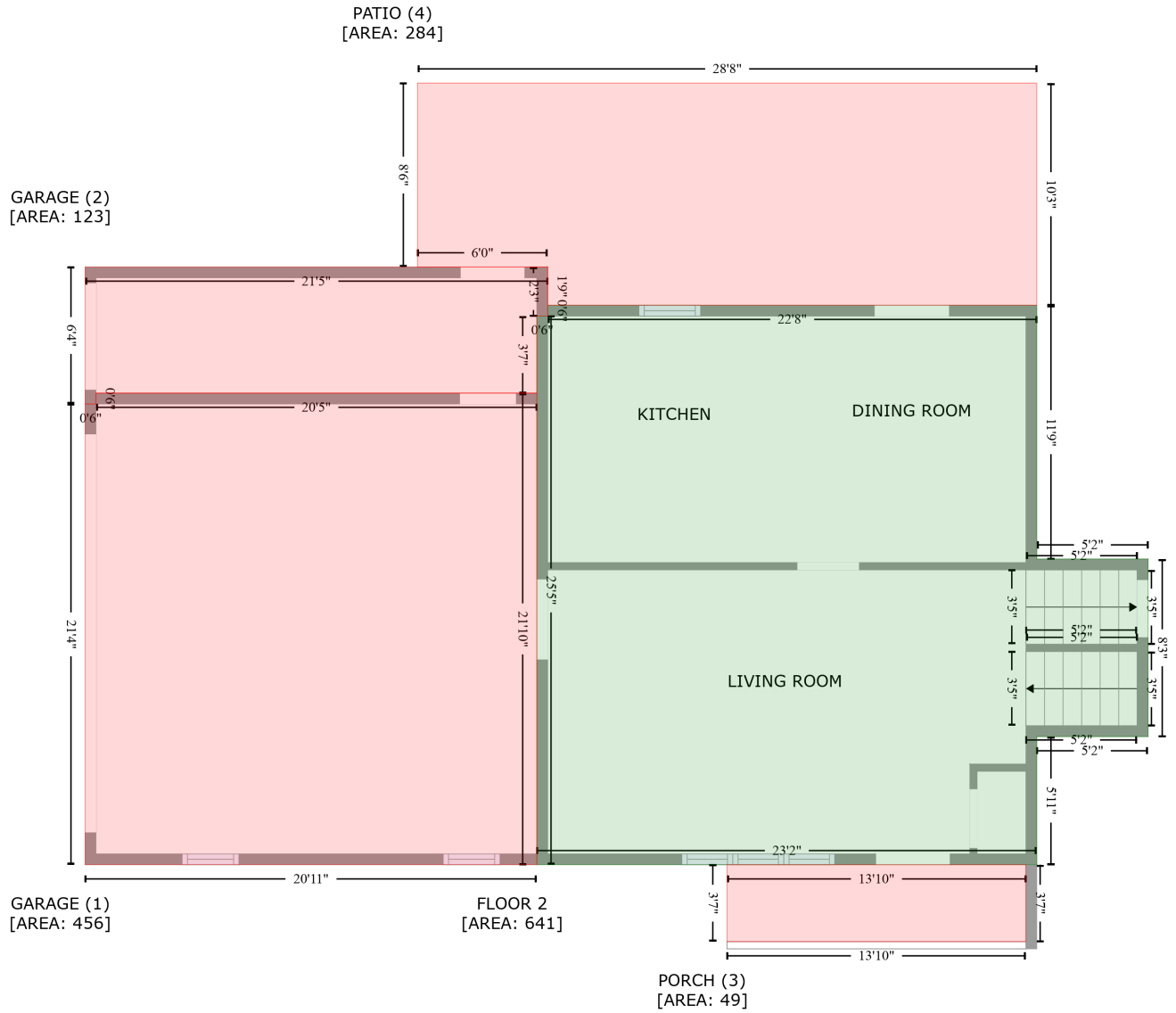
302 Ridgewood Street, Easley, Pickens County, South Carolina, United States, 29642

Gross Living Area: 1480 sq. ft

Space	Area (sq. ft)	Calculation <small>Coordinate Polygon Area Algorithm using inches</small>
(Non-living area)		$523.7 + (758.5 + 872.7) * (523.7 - 523.7) * 0.5 * 0.00694$

302 Ridgewood Street, Easley, Pickens County, South Carolina, United States, 29642

Gross Living Area: 1480 sq. ft



Space	Area (sq. ft)	Calculation <small>Coordinate Polygon Area Algorithm using inches</small>
FLOOR 2 (Living area)	641	$-\left((431.2 + 431.2) * (523.2 - 664.1) + (431.2 + 493) * (664.1 - 664.1) + (493 + 493) * (664.1 - 762.7) + (493 + 431.2) * (762.7 - 762.7) + (431.2 + 431.2) * (762.7 - 833.9) + (431.2 + 153.6) * (833.9 - 833.9) + (153.6 + 153.6) * (833.9 - 529.2) + (153.6 + 159.6) * (529.2 - 529.2) + (159.6 + 159.6) * (529.2 - 523.2) + (159.6 + 431.2) * (523.2 - 523.2)\right) * 0.5 * 0.00694$
GARAGE (Non-living area)	456	$-\left((153.6 + 153.6) * (572 - 833.9) + (153.6 + -97.3) * (833.9 - 833.9) + (-97.3 + -97.3) * (833.9 - 578) + (-97.3 + -91.3) * (578 - 578) + (-91.3 + -91.3) * (578 - 572) + (-91.3 + 153.6) * (572 - 572)\right) * 0.5 * 0.00694$
GARAGE	123	$-\left((159.6 + 159.6) * (501.9 - 529.2) + (159.6 + 153.6) * (529.2 - 529.2) + (153.6 + 153.6) * (529.2 - 529.2)\right) * 0.5 * 0.00694$

302 Ridgewood Street, Easley, Pickens County, South Carolina, United States, 29642

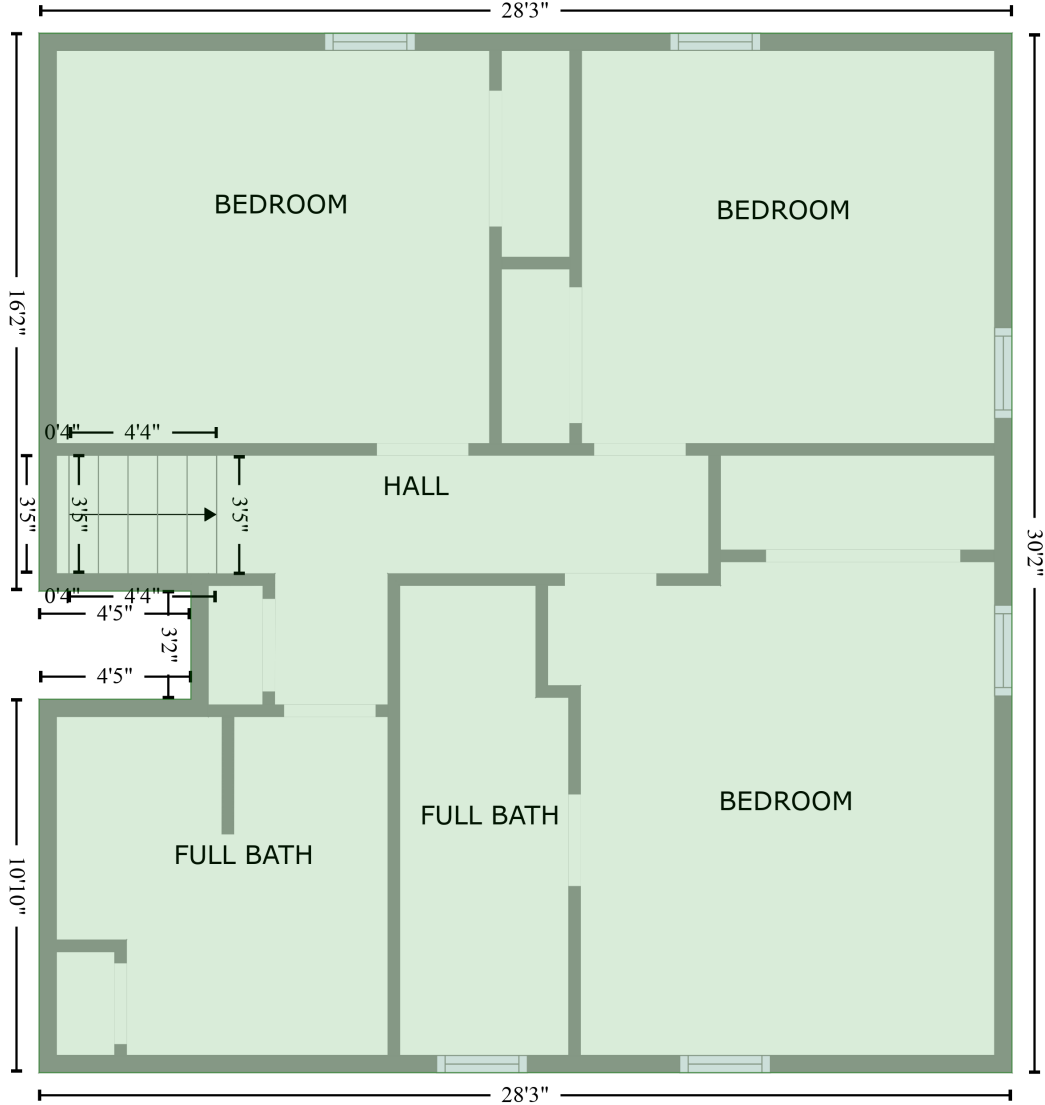
Gross Living Area: 1480 sq. ft

Space	Area (sq. ft)	Calculation <small>Coordinate Polygon Area Algorithm using inches</small>
(Non-living area)		$572 + (153.6 + -91.3) * (572 - 572) + (-91.3 + -91.3) * (572 - 578) + (-91.3 + -97.3) * (578 - 578) + (-97.3 + -97.3) * (578 - 501.9) + (-97.3 + 159.6) * (501.9 - 501.9) * 0.5 * 0.00694$
PORCH (Non-living area)	49	$-((425.2 + 425.2) * (833.9 - 876.6) + (425.2 + 259.2) * (876.6 - 876.6) + (259.2 + 259.2) * (876.6 - 833.9) + (259.2 + 425.2) * (833.9 - 833.9)) * 0.5 * 0.00694$
PATIO (Non-living area)	284	$-((431.2 + 431.2) * (399.8 - 523.2) + (431.2 + 159.6) * (523.2 - 523.2) + (159.6 + 159.6) * (523.2 - 501.9) + (159.6 + 87.3) * (501.9 - 501.9) + (87.3 + 87.3) * (501.9 - 399.8) + (87.3 + 431.2) * (399.8 - 399.8)) * 0.5 * 0.00694$

302 Ridgewood Street, Easley, Pickens County, South Carolina, United States, 29642

Gross Living Area: 1480 sq. ft

FLOOR 3
[AREA: 839]



Space	Area (sq. ft)	Calculation <small>Coordinate Polygon Area Algorithm using inches</small>
FLOOR 3 (Living area)	839	$-((764.8 + 764.8) * (526.4 - 888.4) + (764.8 + 425.6) * (888.4 - 888.4) + (425.6 + 425.6) * (888.4 - 758.4) + (425.6 + 478.6) * (758.4 - 758.4) + (478.6 + 478.6) * (758.4 - 720.7) + (478.6 + 425.6) * (720.7 - 720.7) + (425.6 + 425.6) * (720.7 - 526.4) + (425.6 + 764.8) * (526.4 - 526.4)) * 0.5 * 0.00694$