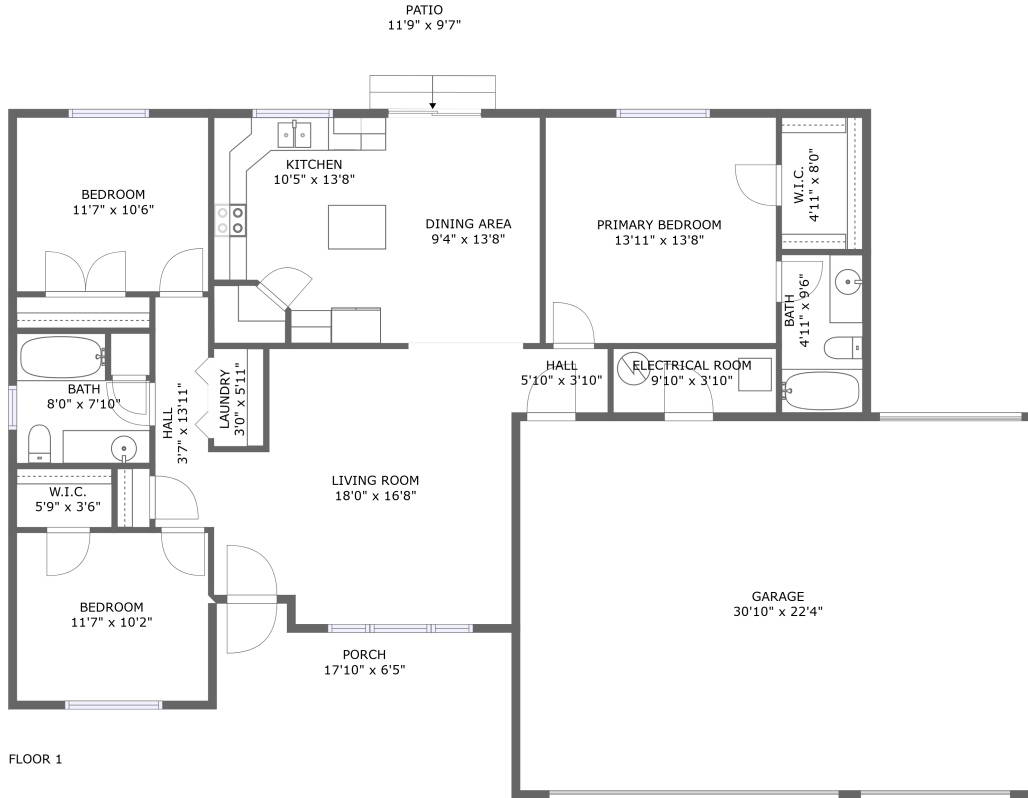



4123 Sunny Brook Drive, Pocatello, Bannock County, Idaho, United States, 83202



Property summary


 **1** Garages

 **3** Bedrooms

 **2** Bathrooms

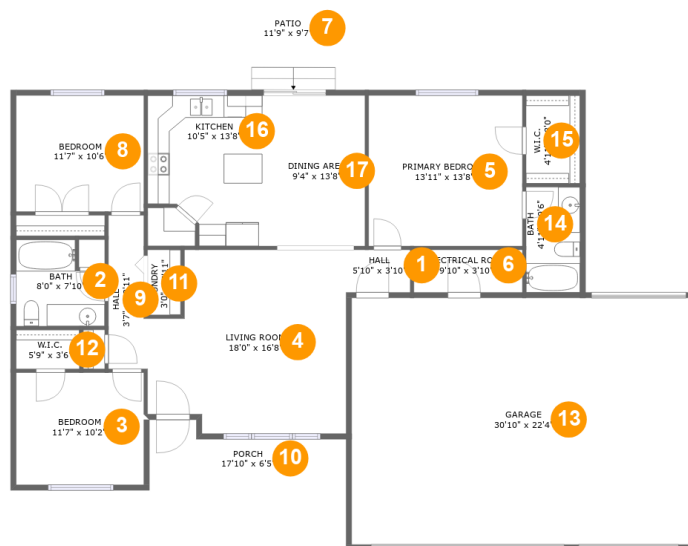
 **0** Half baths

 **1** Floors

 **1,385** Gross living area sqft

 **2,357** Total sqft

4123 Sunny Brook Drive, Pocatello, Bannock County, Idaho, United States, 83202



Room dimensions

Floor 1

Total sqft: 2357 Living area: 1385

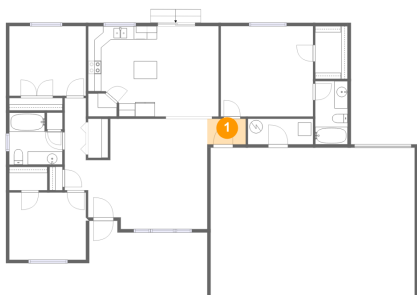
#		Dimensions	sqft	Counted as living area
1	Hall	5'10" x 3'10"	22 sq. ft	Yes
2	Bath	8'0" x 7'10"	55 sq. ft	Yes
3	Bedroom	11'7" x 10'2"	118 sq. ft	Yes
4	Living Room	18'0" x 16'8"	270 sq. ft	Yes
5	Bedroom	13'11" x 13'8"	190 sq. ft	Yes
6	Room	9'10" x 3'10"	38 sq. ft	No
7	Outdoor	11'9" x 9'7"	113 sq. ft	No
8	Bedroom	11'7" x 10'6"	122 sq. ft	Yes
9	Hall	3'7" x 13'11"	46 sq. ft	Yes
10	Outdoor	17'10" x 6'5"	90 sq. ft	No
11	Utility	3'0" x 5'11"	18 sq. ft	Yes

**4123 Sunny Brook Drive, Pocatello, Bannock County,
Idaho, United States, 83202**

#		Dimensions	sqft	Counted as living area
12	Cl	5'9" x 3'6"	20 sq. ft	Yes
13	Garage	30'10" x 22'4"	689 sq. ft	No
14	Bath	4'11" x 9'6"	47 sq. ft	Yes
15	Cl	4'11" x 8'0"	39 sq. ft	Yes
16	Kitchen	10'5" x 13'8"	126 sq. ft	Yes
17	Dining Room	9'4" x 13'8"	127 sq. ft	Yes

4123 Sunny Brook Drive, Pocatello, Bannock County,
Idaho, United States, 83202

1 Floor 1 - Hall



Dimensions: 5'10" x 3'10"
Area: 22 sq. ft
Counted as living area: Yes

Heated: Yes
Finished: Yes
Enclosed: Yes
Contiguous: Yes
Permitted: Yes
Wet space: No
Addition: No
Conversion: No

2 Floor 1 - Bath



Dimensions: 8'0" x 7'10"
Area: 55 sq. ft
Counted as living area: Yes

Heated: Yes
Finished: Yes
Enclosed: Yes
Contiguous: Yes
Permitted: Yes
Wet space: Yes
Addition: No
Conversion: No

4123 Sunny Brook Drive, Pocatello, Bannock County,
Idaho, United States, 83202

3 Floor 1 - Bedroom



Dimensions: 11'7" x 10'2"
Area: 118 sq. ft
Counted as living area: Yes

Heated: Yes
Finished: Yes
Enclosed: Yes
Contiguous: Yes
Permitted: Yes
Wet space: No
Addition: No
Conversion: No

4 Floor 1 - Living Room



Dimensions: 18'0" x 16'8"
Area: 270 sq. ft
Counted as living area: Yes

Heated: Yes
Finished: Yes
Enclosed: Yes
Contiguous: Yes
Permitted: Yes
Wet space: No
Addition: No
Conversion: No

5 Floor 1 - Bedroom



Dimensions: 13'11" x 13'8"
Area: 190 sq. ft
Counted as living area: Yes

Heated: Yes
Finished: Yes
Enclosed: Yes
Contiguous: Yes
Permitted: Yes
Wet space: No
Addition: No
Conversion: No

4123 Sunny Brook Drive, Pocatello, Bannock County,
Idaho, United States, 83202

6 Floor 1 - Room



Dimensions: 9'10" x 3'10"
Area: 38 sq. ft
Counted as living area: No

Heated: No
Finished: No
Enclosed: Yes
Contiguous: Yes
Permitted: Yes
Wet space: No
Addition: No
Conversion: No

7 Floor 1 - Outdoor



Dimensions: 11'9" x 9'7"
Area: 113 sq. ft
Counted as living area: No

Heated: No
Finished: Yes
Enclosed: No
Contiguous: Yes
Permitted: Yes
Wet space: No
Addition: No
Conversion: No

8 Floor 1 - Bedroom

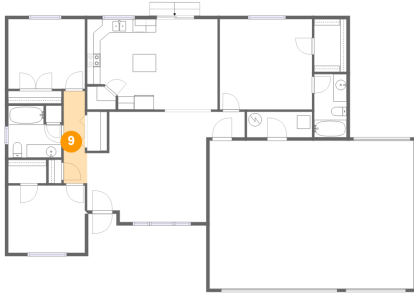


Dimensions: 11'7" x 10'6"
Area: 122 sq. ft
Counted as living area: Yes

Heated: Yes
Finished: Yes
Enclosed: Yes
Contiguous: Yes
Permitted: Yes
Wet space: No
Addition: No
Conversion: No

4123 Sunny Brook Drive, Pocatello, Bannock County,
Idaho, United States, 83202

9 Floor 1 - Hall



Dimensions: 3'7" x 13'11"
Area: 46 sq. ft
Counted as living area: Yes

Heated: Yes
Finished: Yes
Enclosed: Yes
Contiguous: Yes
Permitted: Yes
Wet space: No
Addition: No
Conversion: No

10 Floor 1 - Outdoor



Dimensions: 17'10" x 6'5"
Area: 90 sq. ft
Counted as living area: No

Heated: No
Finished: Yes
Enclosed: No
Contiguous: Yes
Permitted: Yes
Wet space: No
Addition: No
Conversion: No

11 Floor 1 - Utility



Dimensions: 3'0" x 5'11"
Area: 18 sq. ft
Counted as living area: Yes

Heated: Yes
Finished: Yes
Enclosed: Yes
Contiguous: Yes
Permitted: Yes
Wet space: No
Addition: No
Conversion: No

4123 Sunny Brook Drive, Pocatello, Bannock County,
Idaho, United States, 83202

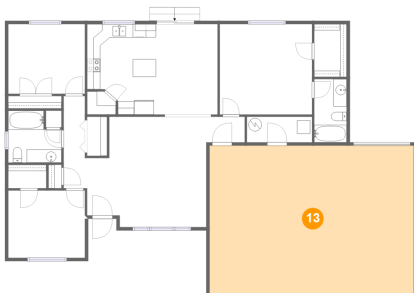
12 Floor 1 - Cl



Dimensions: 5'9" x 3'6"
Area: 20 sq. ft
Counted as living area: Yes

Heated: Yes
Finished: Yes
Enclosed: Yes
Contiguous: Yes
Permitted: Yes
Wet space: No
Addition: No
Conversion: No

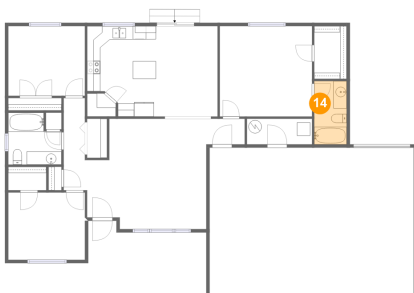
13 Floor 1 - Garage



Dimensions: 30'10" x 22'4"
Area: 689 sq. ft
Counted as living area: No

Heated: No
Finished: No
Enclosed: Yes
Contiguous: Yes
Permitted: Yes
Wet space: No
Addition: No
Conversion: No

14 Floor 1 - Bath



Dimensions: 4'11" x 9'6"
Area: 47 sq. ft
Counted as living area: Yes

Heated: Yes
Finished: Yes
Enclosed: Yes
Contiguous: Yes
Permitted: Yes
Wet space: Yes
Addition: No
Conversion: No

4123 Sunny Brook Drive, Pocatello, Bannock County,
Idaho, United States, 83202

15 Floor 1 - Cl



Dimensions: 4'11" x 8'0"
Area: 39 sq. ft
Counted as living area: Yes

Heated: Yes
Finished: Yes
Enclosed: Yes
Contiguous: Yes
Permitted: Yes
Wet space: No
Addition: No
Conversion: No

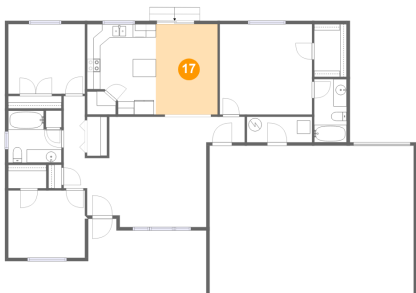
16 Floor 1 - Kitchen



Dimensions: 10'5" x 13'8"
Area: 126 sq. ft
Counted as living area: Yes

Heated: Yes
Finished: Yes
Enclosed: Yes
Contiguous: Yes
Permitted: Yes
Wet space: No
Addition: No
Conversion: No

17 Floor 1 - Dining Room



Dimensions: 9'4" x 13'8"
Area: 127 sq. ft
Counted as living area: Yes

Heated: Yes
Finished: Yes
Enclosed: Yes
Contiguous: Yes
Permitted: Yes
Wet space: No
Addition: No
Conversion: No