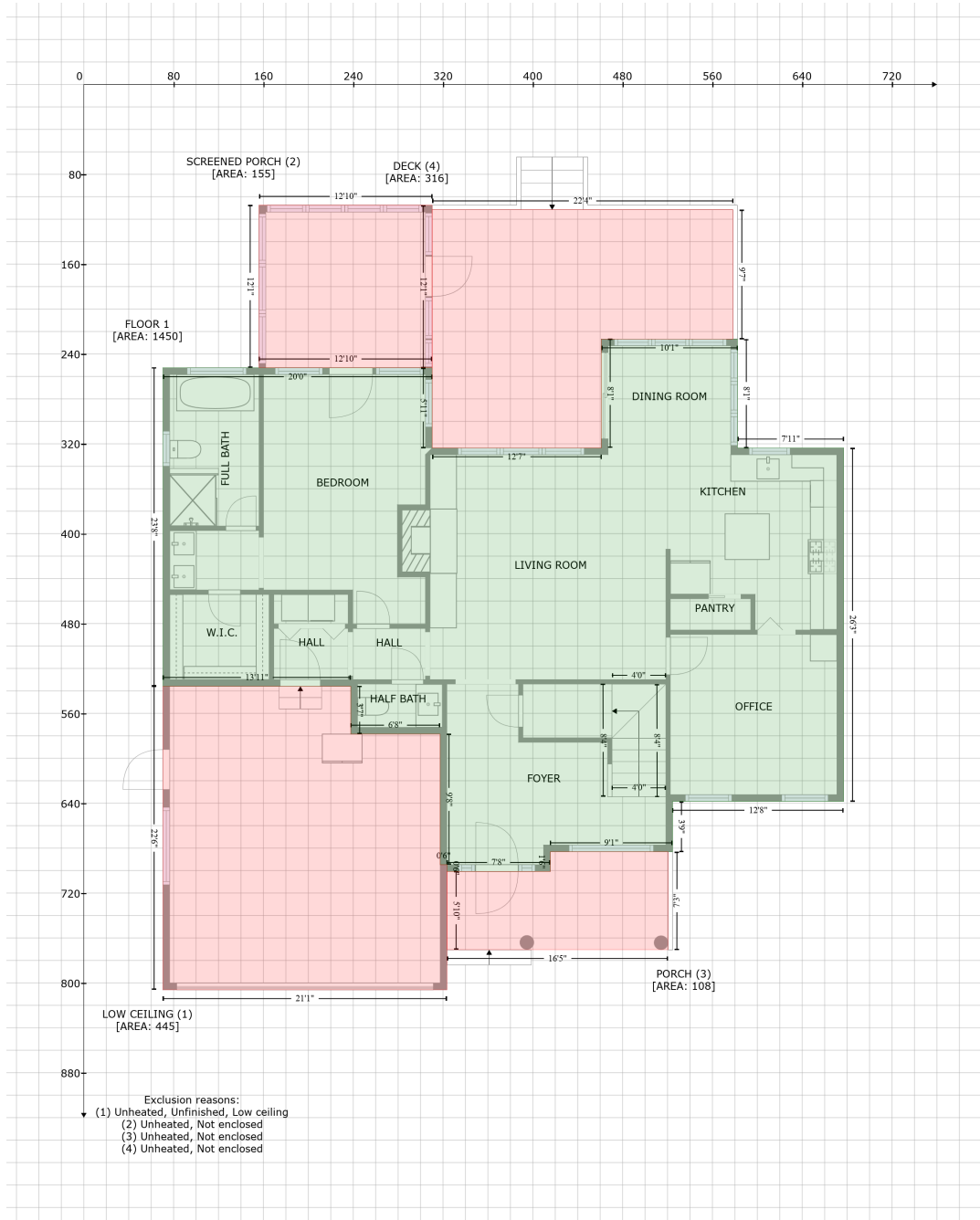


5024 Kinderston Drive, Sunset Ridge, Holly Springs, Wake County, North Carolina, United States, 27540

Gross Living Area: 2512 sq. ft



Space	Area (sq. ft)	Calculation <small>Coordinate Polygon Area Algorithm using inches</small>
FLOOR 1 (Living area)	1450	$ \begin{aligned} & -((582.3 + 582.3) * (226.7 - 323.6) + (582.3 + 676.9) * (323.6 - 323.6) + (676.9 + 676.9) * (323.6 - 638.4) \\ & + (676.9 + 524.5) * (638.4 - 638.4) + (524.5 + 524.5) * (638.4 - 683.2) + (524.5 + 415.6) * (683.2 - 683.2) \\ & + (415.6 + 415.6) * (683.2 - 700.8) + (415.6 + 323.5) * (700.8 - 700.8) + (323.5 + 323.5) * (700.8 - 694.8) \\ & + (323.5 + 317.5) * (694.8 - 694.8) + (317.5 + 317.5) * (694.8 - 578.5) + (317.5 + 237.9) * (578.5 - 578.5) \\ & + (237.9 + 237.9) * (578.5 - 535.9) + (237.9 + 70.5) * (535.9 - 535.9) + (70.5 + 70.5) * (535.9 - 252.3) \\ & + (70.5 + 310.3) * (252.3 - 252.3) + (310.3 + 310.3) * (252.3 - 323.6) + (310.3 + 461) * (323.6 - 323.6) \\ & + (461 + 461) * (323.6 - 226.7) + (461 + 582.3) * \end{aligned} $

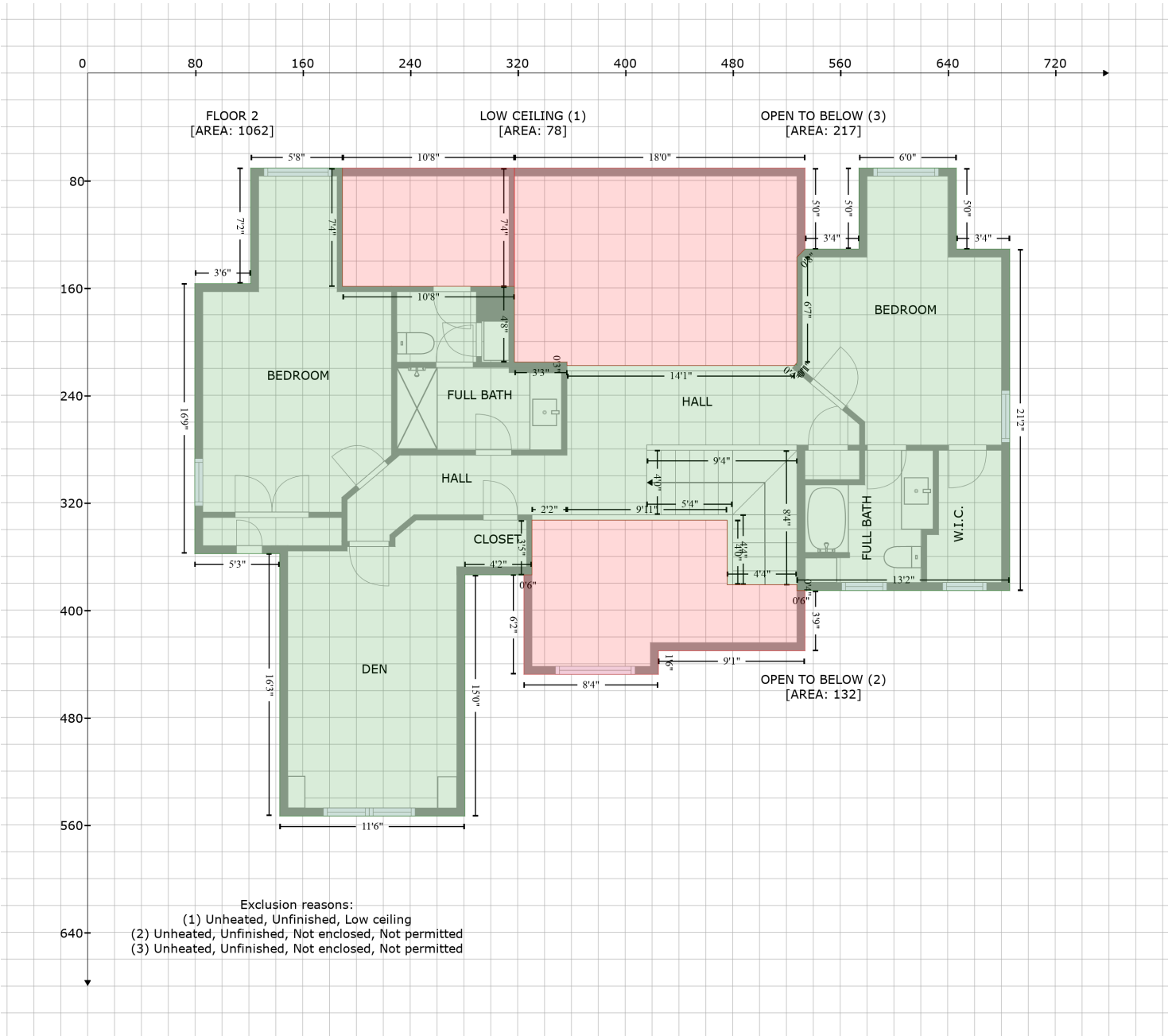
5024 Kinderston Drive, Sunset Ridge, Holly Springs, Wake County, North Carolina, United States, 27540

Gross Living Area: 2512 sq. ft

Space	Area (sq. ft)	Calculation <small>Coordinate Polygon Area Algorithm using inches</small>
LOW CEILING (Non-living area)	445	$(226.7 - 226.7) * 0.5 * 0.00694$ $-((237.9 + 237.9) * (535.9 - 578.5) + (237.9 + 317.5) * (578.5 - 578.5) + (317.5 + 317.5) * (578.5 - 694.8) + (317.5 + 323.5) * (694.8 - 694.8) + (323.5 + 323.5) * (694.8 - 806.2) + (323.5 + 70.5) * (806.2 - 806.2) + (70.5 + 70.5) * (806.2 - 535.9) + (70.5 + 237.9) * (535.9 - 535.9)) * 0.5 * 0.00694$
SCREENED PORCH (Non-living area)	155	$-((310.3 + 310.3) * (107.6 - 252.3) + (310.3 + 156.1) * (252.3 - 252.3) + (156.1 + 156.1) * (252.3 - 107.6) + (156.1 + 310.3) * (107.6 - 107.6)) * 0.5 * 0.00694$
PORCH (Non-living area)	108	$-((520.5 + 520.5) * (683.2 - 770.4) + (520.5 + 323.8) * (770.4 - 770.4) + (323.8 + 323.8) * (770.4 - 700.8) + (323.8 + 415.6) * (700.8 - 700.8) + (415.6 + 415.6) * (700.8 - 683.2) + (415.6 + 520.5) * (683.2 - 683.2)) * 0.5 * 0.00694$
DECK (Non-living area)	316	$-((578.3 + 578.3) * (111.5 - 226.7) + (578.3 + 461) * (226.7 - 226.7) + (461 + 461) * (226.7 - 323.6) + (461 + 310.3) * (323.6 - 323.6) + (310.3 + 310.3) * (323.6 - 111.6) + (310.3 + 578.3) * (111.6 - 111.5)) * 0.5 * 0.00694$

5024 Kinderston Drive, Sunset Ridge, Holly Springs, Wake County, North Carolina, United States, 27540

Gross Living Area: 2512 sq. ft



Space	Area (sq. ft)	Calculation
FLOOR 2 (Living area)	1062	Coordinate Polygon Area Algorithm using inches $-((528.1 + 527) * (217.6 - 216.7) + (527 + 527.8) * (216.7 - 215.7) + (527.8 + 527.8) * (215.7 - 137.1) + (527.8 + 533.8) * (137.1 - 131.1) + (533.8 + 574) * (131.1 - 131.1) + (574 + 574) * (131.1 - 70.8) + (574 + 646.4) * (70.8 - 70.8) + (646.4 + 646.4) * (70.8 - 131.1) + (646.4 + 686.2) * (131.1 - 131.1) + (686.2 + 686.2) * (131.1 - 385.5) + (686.2 + 527.8) * (385.5 - 385.5) + (527.8 + 527.8) * (385.5 - 381.1) + (527.8 + 475.9) * (381.1 - 381.1) + (475.9 + 475.9) * (381.1 - 333) + (475.9 + 356.7) * (333 - 333) + (356.7 + 330.7) * (333 - 333) + (330.7 + 330.7) * (333 - 373.8) + (330.7 + 280.7) * (373.8 - 373.8) + (280.7 + 280.7) * (373.8 - 553.4) + (280.7 + 142.9) * (553.4 - 553.4) + (142.9 + 142.9) * (553.4 - 358) + (142.9 + 79.7) * (358 - 358) + (79.7 + 79.7) * (358 - 358)$

5024 Kinderston Drive, Sunset Ridge, Holly Springs, Wake County, North Carolina, United States, 27540

Gross Living Area: 2512 sq. ft

Space	Area (sq. ft)	Calculation <small>Coordinate Polygon Area Algorithm using inches</small>
		$156.9 + (79.7 + 121.3) * (156.9 - 156.9) + (121.3 + 121.3) * (156.9 - 70.8) + (121.3 + 189.6) * (70.8 - 70.8) + (189.6 + 189.6) * (70.8 - 158.9) + (189.6 + 317.6) * (158.9 - 158.9) + (317.6 + 317.6) * (158.9 - 215.3) + (317.6 + 356.7) * (215.3 - 215.3) + (356.7 + 356.7) * (215.3 - 217.9) + (356.7 + 526) * (217.9 - 217.9) + (526 + 526.1) * (217.9 - 217.6) + (526.1 + 526.9) * (217.6 - 216.9) + (526.9 + 528.1) * (216.9 - 217.6)) * 0.5 * 0.00694$
LOW CEILING (Non-living area)	78	$-((317.6 + 317.6) * (70.8 - 158.9) + (317.6 + 189.6) * (158.9 - 158.9) + (189.6 + 189.6) * (158.9 - 70.8) + (189.6 + 317.6) * (70.8 - 70.8)) * 0.5 * 0.00694$
OPEN TO BELOW (Non-living area)	132	$-((330.7 + 475.9) * (333 - 333) + (475.9 + 475.9) * (333 - 381.1) + (475.9 + 527.8) * (381.1 - 381.1) + (527.8 + 527.8) * (381.1 - 385.5) + (527.8 + 533.8) * (385.5 - 385.5) + (533.8 + 533.8) * (385.5 - 430.3) + (533.8 + 424.7) * (430.3 - 430.3) + (424.7 + 424.7) * (430.3 - 447.9) + (424.7 + 324.7) * (447.9 - 447.9) + (324.7 + 324.7) * (447.9 - 373.8) + (324.7 + 330.7) * (373.8 - 373.8) + (330.7 + 330.7) * (373.8 - 333)) * 0.5 * 0.00694$
OPEN TO BELOW (Non-living area)	217	$-((533.8 + 533.8) * (70.8 - 131.1) + (533.8 + 527.8) * (131.1 - 137.1) + (527.8 + 527.8) * (137.1 - 215.7) + (527.8 + 526) * (215.7 - 217.9) + (526 + 356.7) * (217.9 - 217.9) + (356.7 + 356.7) * (217.9 - 215.3) + (356.7 + 317.6) * (215.3 - 215.3) + (317.6 + 317.6) * (215.3 - 70.8) + (317.6 + 533.8) * (70.8 - 70.8)) * 0.5 * 0.00694$