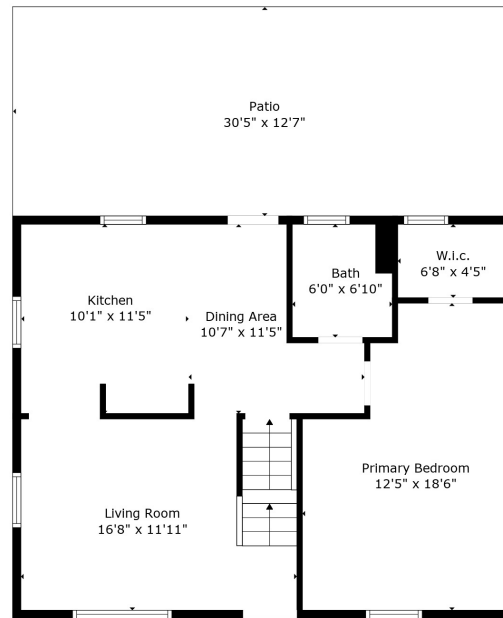
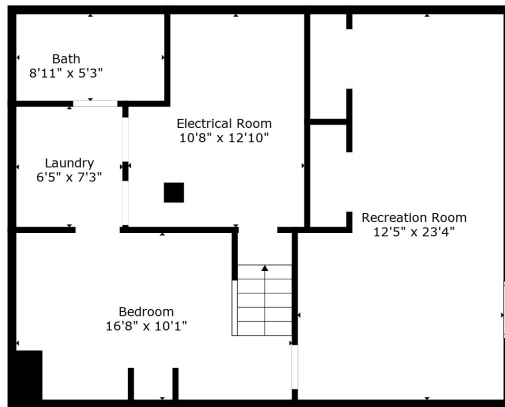


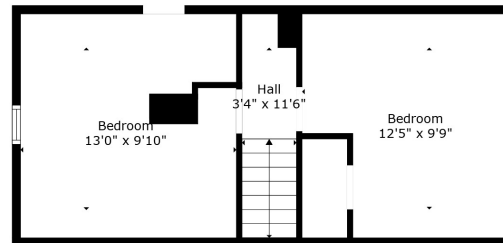
Floor 2



Floor 3

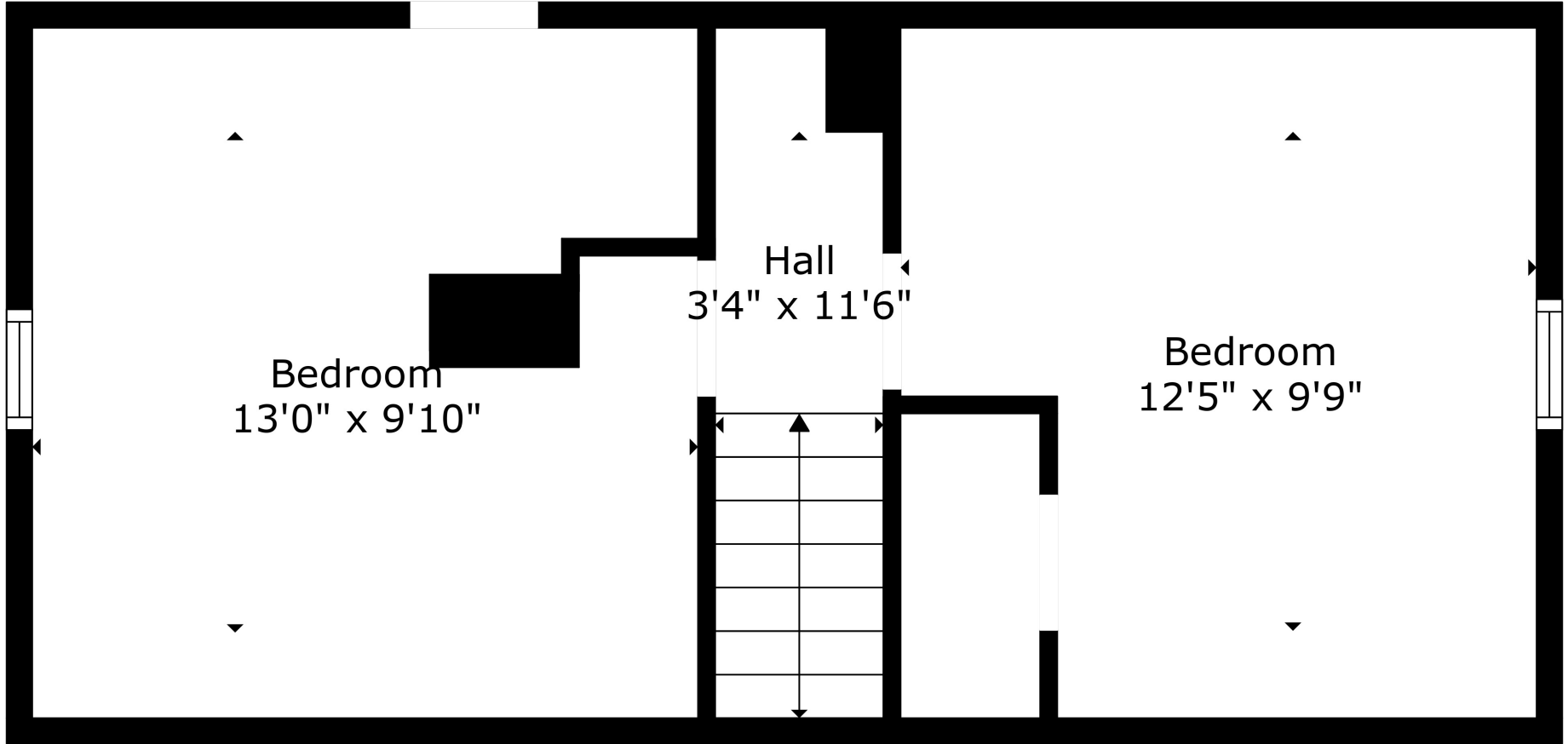


Floor 1



Floor 4

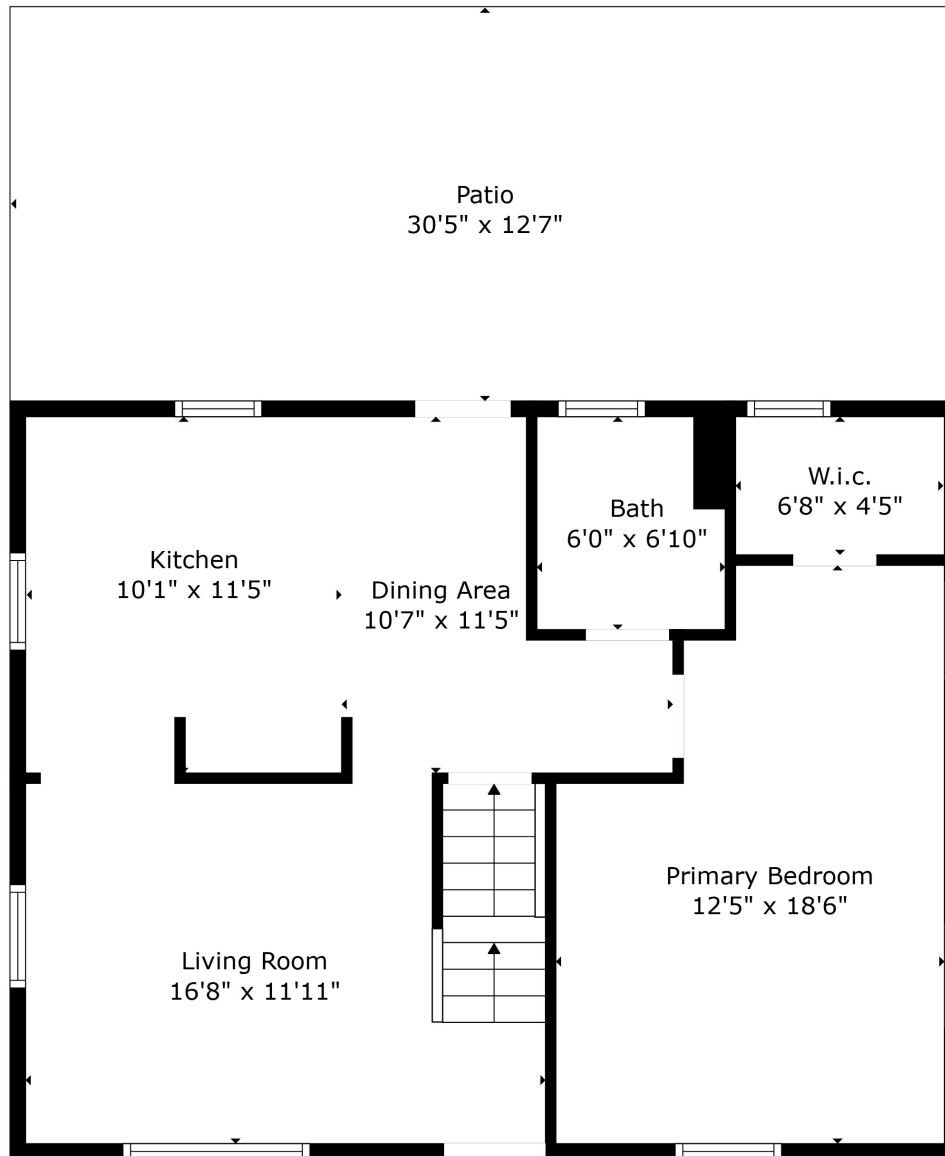
**TOTAL: 1545 sq. ft**  
 BELOW GROUND: 564 sq. ft, FLOOR 2: 0 sq. ft, FLOOR 3: 686 sq. ft, FLOOR 4: 295 sq. ft  
 EXCLUDED AREAS: ELECTRICAL ROOM: 123 sq. ft, GARAGE: 362 sq. ft, PATIO: 385 sq. ft,  
 LOW CEILING: 104 sq. ft



**TOTAL: 1545 sq. ft**

BELOW GROUND: 564 sq. ft, FLOOR 2: 0 sq. ft, FLOOR 3: 686 sq. ft, FLOOR 4: 295 sq. ft  
EXCLUDED AREAS: ELECTRICAL ROOM: 123 sq. ft, GARAGE: 362 sq. ft, PATIO: 385 sq. ft,  
LOW CEILING: 104 sq. ft

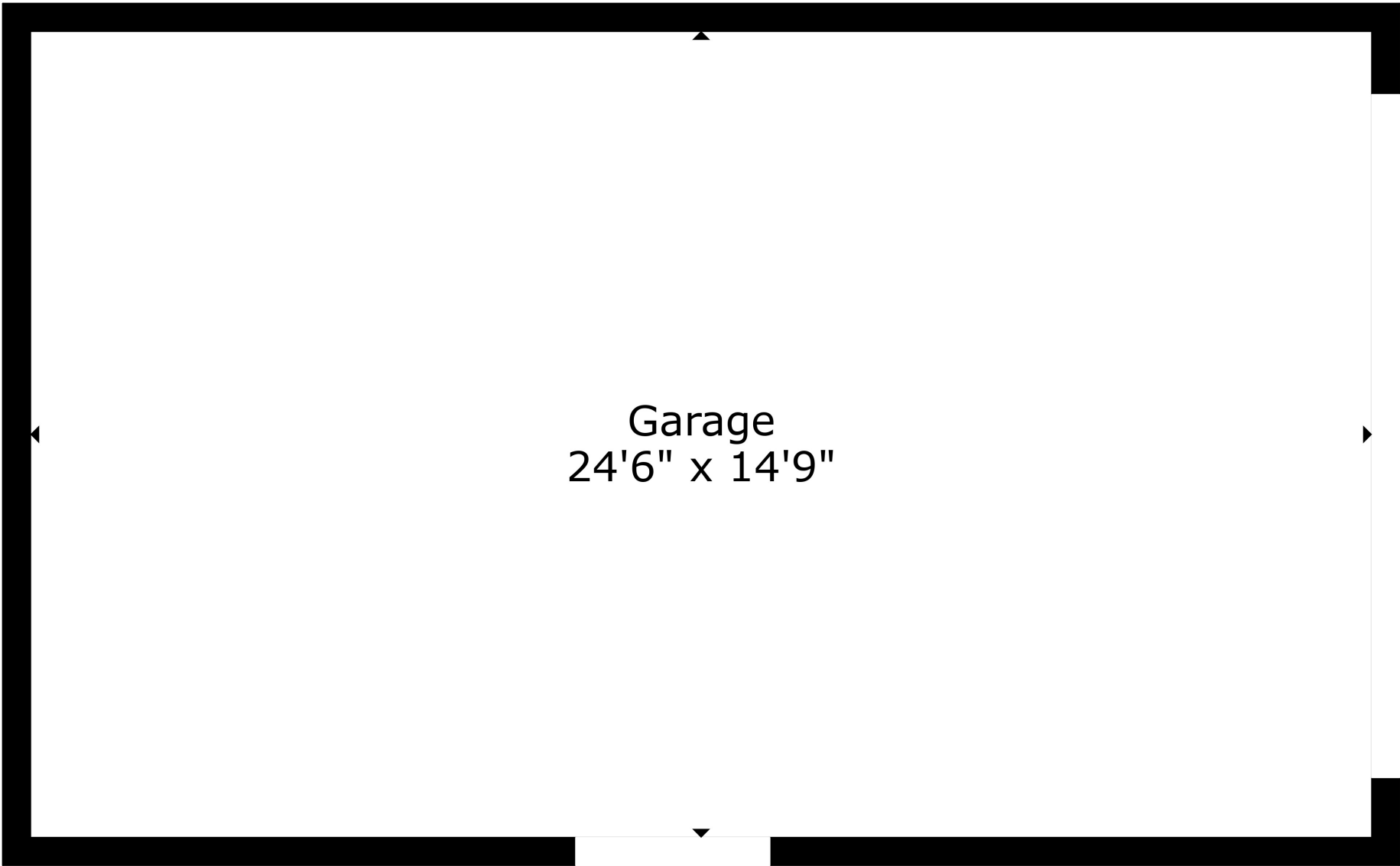
Created By Nordy Photography. Calculations Deemed Highly Reliable But Not Guaranteed.



**TOTAL: 1545 sq. ft**

BELOW GROUND: 564 sq. ft, FLOOR 2: 0 sq. ft, FLOOR 3: 686 sq. ft, FLOOR 4: 295 sq. ft  
EXCLUDED AREAS: ELECTRICAL ROOM: 123 sq. ft, GARAGE: 362 sq. ft, PATIO: 385 sq. ft,  
LOW CEILING: 104 sq. ft

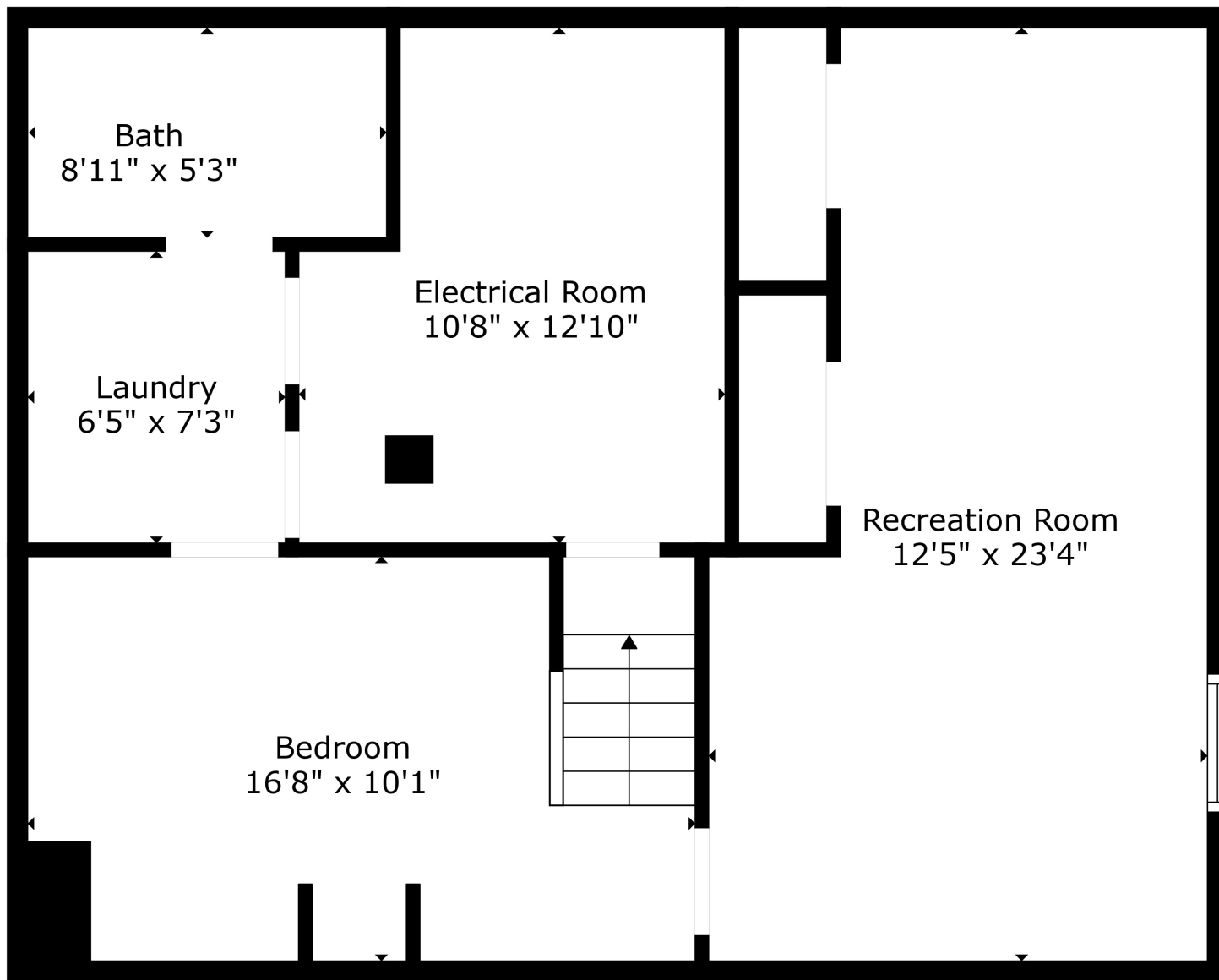
Created By Nordy Photography. Calculations Deemed Highly Reliable But Not Guaranteed.



Garage  
24'6" x 14'9"

**TOTAL: 1545 sq. ft**

BELOW GROUND: 564 sq. ft, FLOOR 2: 0 sq. ft, FLOOR 3: 686 sq. ft, FLOOR 4: 295 sq. ft  
EXCLUDED AREAS: ELECTRICAL ROOM: 123 sq. ft, GARAGE: 362 sq. ft, PATIO: 385 sq. ft,  
LOW CEILING: 104 sq. ft



**TOTAL: 1545 sq. ft**  
BELOW GROUND: 564 sq. ft, FLOOR 2: 0 sq. ft, FLOOR 3: 686 sq. ft, FLOOR 4: 295 sq. ft  
EXCLUDED AREAS: ELECTRICAL ROOM: 123 sq. ft, GARAGE: 362 sq. ft, PATIO: 385 sq. ft,  
LOW CEILING: 104 sq. ft