

Home report

2517 Melody Way,Louisville,KY,US



Total Area: 1294 sq. ft
Below Ground: 0 sq. ft, Floor 2: 1294 sq. ft
Excluded: Basement 1294 sq. ft, Fireplace 15 sq. ft

Property summary

 **2** Floors

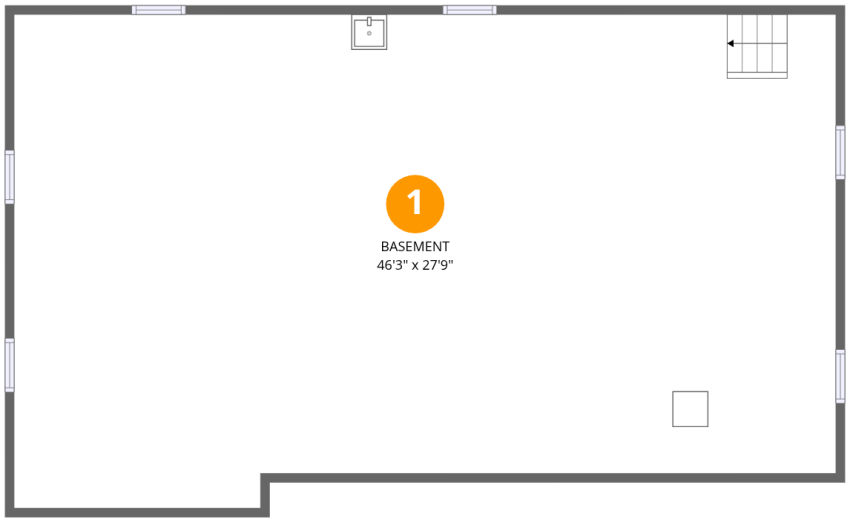
 **3** Bedrooms

 **1** Bathrooms

 **1** Half baths

Home report

2517 Melody Way,Louisville,KY,US



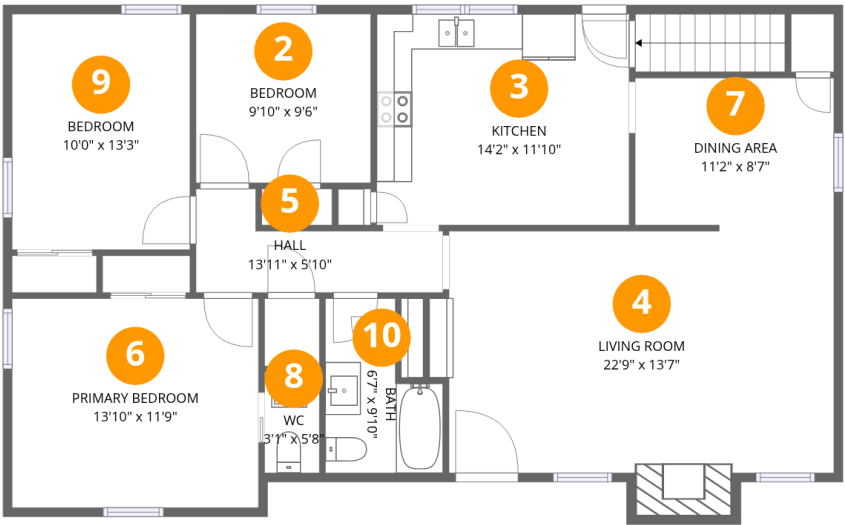
Room dimensions

Floor 1 Below ground Total:0sqft Excluded: 1294sqft

| # | | Max Dimensions | sqft | Included |
|---|----------|----------------|-------------|----------|
| 1 | Basement | 46'3" x 27'9" | 1219 sq. ft | No |

Home report

2517 Melody Way,Louisville,KY,US

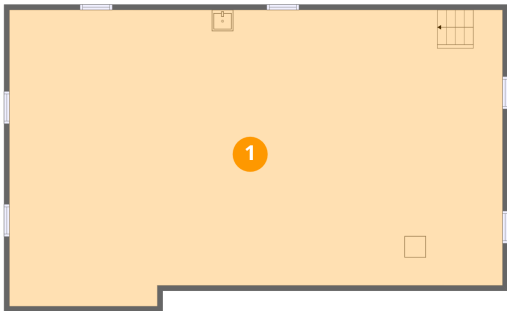


Room dimensions

Floor 2 Total:1294sqft Excluded: 15sqft

| # | | Max Dimensions | sqft | Included |
|----|-----------------|----------------|------------|----------|
| 2 | Bedroom | 9'10" x 9'6" | 93 sq. ft | Yes |
| 3 | Kitchen | 14'2" x 11'10" | 169 sq. ft | Yes |
| 4 | Living Room | 22'9" x 13'7" | 312 sq. ft | Yes |
| 5 | Hall | 13'11" x 5'10" | 56 sq. ft | Yes |
| 6 | Primary Bedroom | 13'10" x 11'9" | 163 sq. ft | Yes |
| 7 | Dining Area | 11'2" x 8'7" | 95 sq. ft | Yes |
| 8 | WC | 3'1" x 5'8" | 18 sq. ft | Yes |
| 9 | Bedroom | 10'0" x 13'3" | 133 sq. ft | Yes |
| 10 | Bath | 6'7" x 9'10" | 52 sq. ft | Yes |

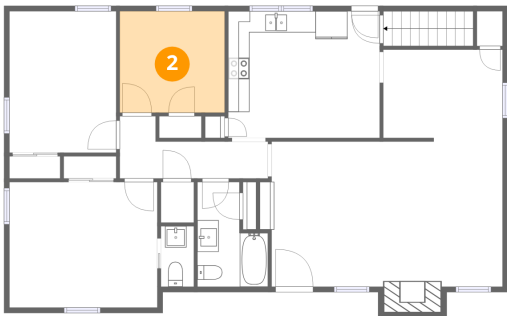
1 Floor 1 - Basement



Max Dimensions: 46'3" x 27'9"
Calculated Area: 1219 sq. ft
Included: No

Heated: Yes
Finished: No
Enclosed: Yes
Contiguous: Yes
Permitted: Yes
Wet space: No
Addition: No
Conversion: No

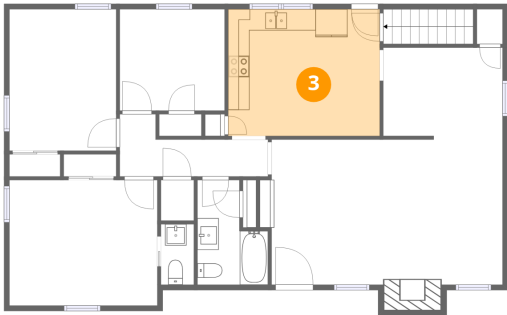
2 Floor 2 - Bedroom



Max Dimensions: 9'10" x 9'6"
Calculated Area: 93 sq. ft
Included: Yes

Heated: Yes
Finished: Yes
Enclosed: Yes
Contiguous: Yes
Permitted: Yes
Wet space: No
Addition: No
Conversion: No

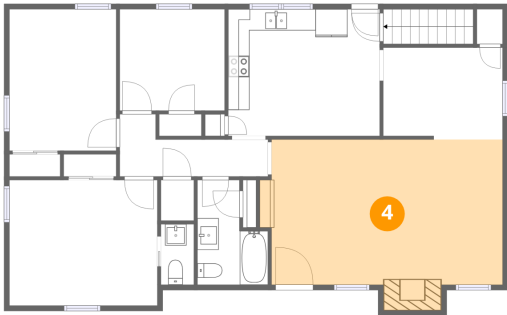
3 Floor 2 - Kitchen



Max Dimensions: 14'2" x 11'10"
Calculated Area: 169 sq. ft
Included: Yes

Heated: Yes
Finished: Yes
Enclosed: Yes
Contiguous: Yes
Permitted: Yes
Wet space: No
Addition: No
Conversion: No

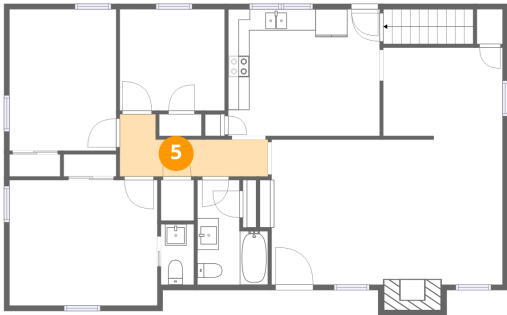
4 Floor 2 - Living Room



Max Dimensions: 22'9" x 13'7"
Calculated Area: 312 sq. ft
Included: Yes

Heated: Yes
Finished: Yes
Enclosed: Yes
Contiguous: Yes
Permitted: Yes
Wet space: No
Addition: No
Conversion: No

5 Floor 2 - Hall



Max Dimensions: 13'11" x 5'10"
Calculated Area: 56 sq. ft
Included: Yes

Heated: Yes
Finished: Yes
Enclosed: Yes
Contiguous: Yes
Permitted: Yes
Wet space: No
Addition: No
Conversion: No

6 Floor 2 - Primary Bedroom



Max Dimensions: 13'10" x 11'9"
Calculated Area: 163 sq. ft
Included: Yes

Heated: Yes
Finished: Yes
Enclosed: Yes
Contiguous: Yes
Permitted: Yes
Wet space: No
Addition: No
Conversion: No

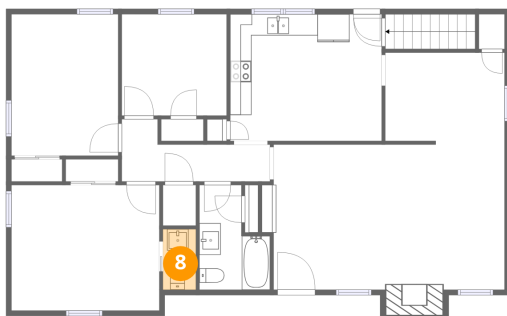
7 Floor 2 - Dining Area



Max Dimensions: 11'2" x 8'7"
Calculated Area: 95 sq. ft
Included: Yes

Heated: Yes
Finished: Yes
Enclosed: Yes
Contiguous: Yes
Permitted: Yes
Wet space: No
Addition: No
Conversion: No

8 Floor 2 - WC



Max Dimensions: 3'1" x 5'8"
Calculated Area: 18 sq. ft
Included: Yes

Heated: Yes
Finished: Yes
Enclosed: Yes
Contiguous: Yes
Permitted: Yes
Wet space: Yes
Addition: No
Conversion: No

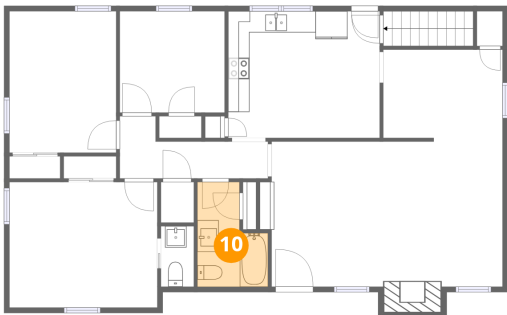
9 Floor 2 - Bedroom



Max Dimensions: 10'0" x 13'3"
Calculated Area: 133 sq. ft
Included: Yes

Heated: Yes
Finished: Yes
Enclosed: Yes
Contiguous: Yes
Permitted: Yes
Wet space: No
Addition: No
Conversion: No

10 Floor 2 - Bath



Max Dimensions: 6'7" x 9'10"
Calculated Area: 52 sq. ft
Included: Yes

Heated: Yes
Finished: Yes
Enclosed: Yes
Contiguous: Yes
Permitted: Yes
Wet space: Yes
Addition: No
Conversion: No