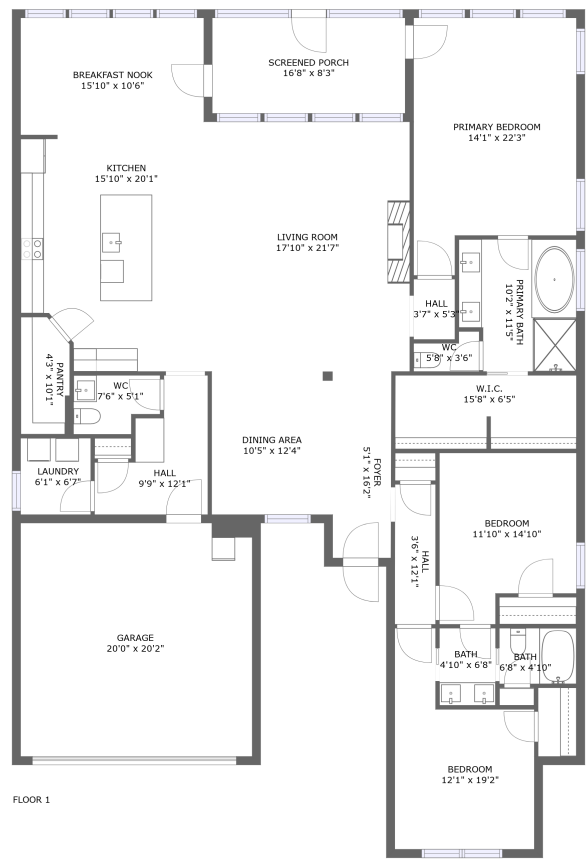


Home report

112 Summer Walk Lane, Harvest, Madison County, Alabama,
United States, 35749




Total GLA: 2538 sq. ft

Floor 1: 2538 sq. ft

Excluded: Garage 449 sq. ft, Screened porch 150 sq. ft

Property summary

 1 Floors

 3 Bedrooms

 2 Bathrooms

Home report

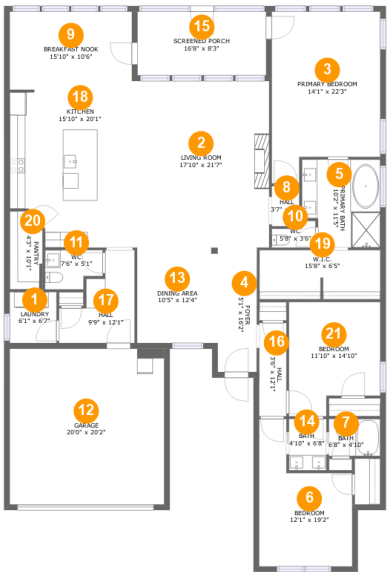
112 Summer Walk Lane, Harvest, Madison County, Alabama,
United States, 35749

 **1**
Half baths

 **1**
Garages

Home report

112 Summer Walk Lane, Harvest, Madison County, Alabama,
United States, 35749



Room dimensions

Floor 1 Total:2538sqft Excluded: 599sqft

#		Max Dimensions	sqft	Included
1	Laundry	6'1" x 6'7"	40 sq. ft	Yes
2	Living Room	17'10" x 21'7"	385 sq. ft	Yes
3	Primary Bedroom	14'1" x 22'3"	277 sq. ft	Yes
4	Foyer	5'1" x 16'2"	82 sq. ft	Yes
5	Primary Bath	10'2" x 11'5"	108 sq. ft	Yes
6	Bedroom	12'1" x 19'2"	171 sq. ft	Yes
7	Bath	6'8" x 4'10"	32 sq. ft	Yes
8	Hall	3'7" x 5'3"	19 sq. ft	Yes
9	Breakfast Nook	15'10" x 10'6"	165 sq. ft	Yes
10	WC	5'8" x 3'6"	16 sq. ft	Yes
11	WC	7'6" x 5'1"	34 sq. ft	Yes

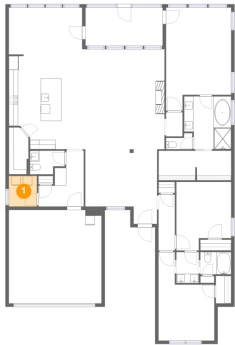
Home report

**112 Summer Walk Lane, Harvest, Madison County, Alabama,
United States, 35749**

#		Max Dimensions	sqft	Included
12	Garage	20'0" x 20'2"	404 sq. ft	No
13	Dining Area	10'5" x 12'4"	129 sq. ft	Yes
14	Bath	4'10" x 6'8"	32 sq. ft	Yes
15	Screened Porch	16'8" x 8'3"	138 sq. ft	No
16	Hall	3'6" x 12'1"	43 sq. ft	Yes
17	Hall	9'9" x 12'1"	82 sq. ft	Yes
18	Kitchen	15'10" x 20'1"	298 sq. ft	Yes
19	W.I.C.	15'8" x 6'5"	99 sq. ft	Yes
20	Pantry	4'3" x 10'1"	41 sq. ft	Yes
21	Bedroom	11'10" x 14'10"	157 sq. ft	Yes

112 Summer Walk Lane, Harvest, Madison County, Alabama,
United States, 35749

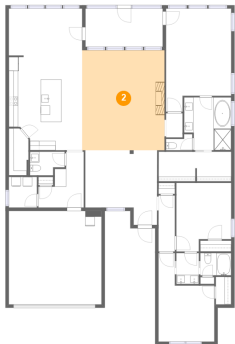
1 Floor 1 - Laundry



Max Dimensions: 6'1" x 6'7"
Calculated Area: 40 sq. ft
Included: Yes

Heated: Yes
Finished: Yes
Enclosed: Yes
Contiguous: Yes
Permitted: Yes
Wet space: No
Addition: No
Conversion: No

2 Floor 1 - Living Room

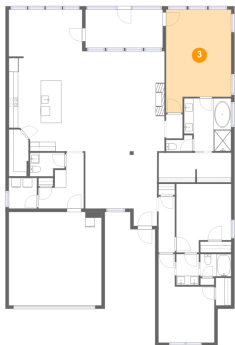


Max Dimensions: 17'10" x 21'7"
Calculated Area: 385 sq. ft
Included: Yes

Heated: Yes
Finished: Yes
Enclosed: Yes
Contiguous: Yes
Permitted: Yes
Wet space: No
Addition: No
Conversion: No

112 Summer Walk Lane, Harvest, Madison County, Alabama,
United States, 35749

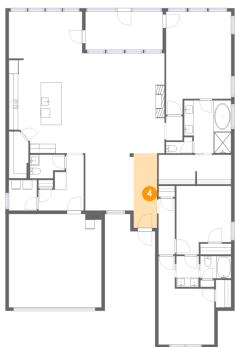
3 Floor 1 - Primary Bedroom



Max Dimensions: 14'1" x 22'3"
Calculated Area: 277 sq. ft
Included: Yes

Heated: Yes
Finished: Yes
Enclosed: Yes
Contiguous: Yes
Permitted: Yes
Wet space: No
Addition: No
Conversion: No

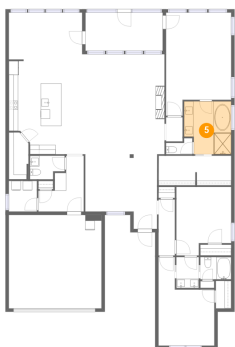
4 Floor 1 - Foyer



Max Dimensions: 5'1" x 16'2"
Calculated Area: 82 sq. ft
Included: Yes

Heated: Yes
Finished: Yes
Enclosed: Yes
Contiguous: Yes
Permitted: Yes
Wet space: No
Addition: No
Conversion: No

5 Floor 1 - Primary Bath



Max Dimensions: 10'2" x 11'5"
Calculated Area: 108 sq. ft
Included: Yes

Heated: Yes
Finished: Yes
Enclosed: Yes
Contiguous: Yes
Permitted: Yes
Wet space: Yes
Addition: No
Conversion: No

112 Summer Walk Lane, Harvest, Madison County, Alabama,
United States, 35749

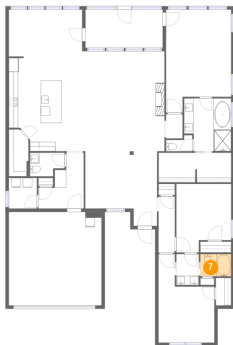
6 Floor 1 - Bedroom



Max Dimensions: 12'1" x 19'2"
Calculated Area: 171 sq. ft
Included: Yes

Heated: Yes
Finished: Yes
Enclosed: Yes
Contiguous: Yes
Permitted: Yes
Wet space: No
Addition: No
Conversion: No

7 Floor 1 - Bath



Max Dimensions: 6'8" x 4'10"
Calculated Area: 32 sq. ft
Included: Yes

Heated: Yes
Finished: Yes
Enclosed: Yes
Contiguous: Yes
Permitted: Yes
Wet space: Yes
Addition: No
Conversion: No

8 Floor 1 - Hall

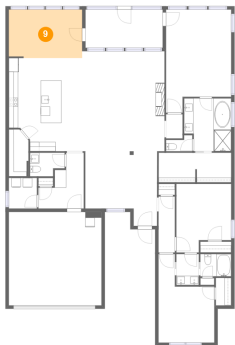


Max Dimensions: 3'7" x 5'3"
Calculated Area: 19 sq. ft
Included: Yes

Heated: Yes
Finished: Yes
Enclosed: Yes
Contiguous: Yes
Permitted: Yes
Wet space: No
Addition: No
Conversion: No

112 Summer Walk Lane, Harvest, Madison County, Alabama,
United States, 35749

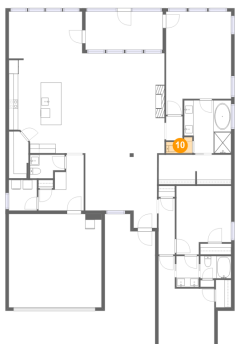
9 Floor 1 - Breakfast Nook



Max Dimensions: 15'10" x 10'6"
Calculated Area: 165 sq. ft
Included: Yes

Heated: Yes
Finished: Yes
Enclosed: Yes
Contiguous: Yes
Permitted: Yes
Wet space: No
Addition: No
Conversion: No

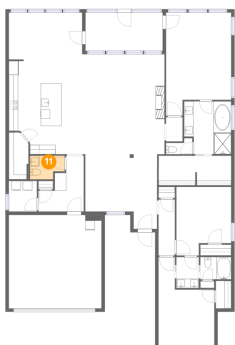
10 Floor 1 - WC



Max Dimensions: 5'8" x 3'6"
Calculated Area: 16 sq. ft
Included: Yes

Heated: Yes
Finished: Yes
Enclosed: Yes
Contiguous: Yes
Permitted: Yes
Wet space: Yes
Addition: No
Conversion: No

11 Floor 1 - WC

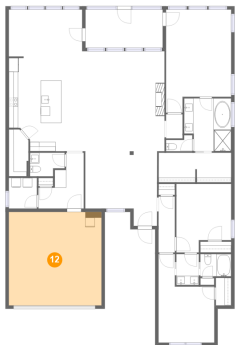


Max Dimensions: 7'6" x 5'1"
Calculated Area: 34 sq. ft
Included: Yes

Heated: Yes
Finished: Yes
Enclosed: Yes
Contiguous: Yes
Permitted: Yes
Wet space: Yes
Addition: No
Conversion: No

112 Summer Walk Lane, Harvest, Madison County, Alabama,
United States, 35749

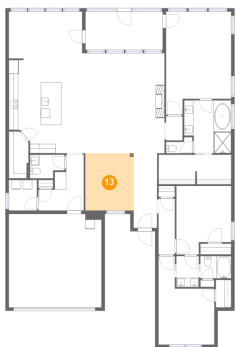
12 Floor 1 - Garage



Max Dimensions: 20'0" x 20'2"
Calculated Area: 404 sq. ft
Included: No

Heated: No
Finished: No
Enclosed: Yes
Contiguous: Yes
Permitted: Yes
Wet space: No
Addition: No
Conversion: No

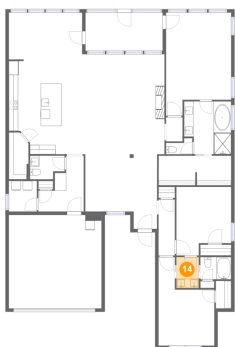
13 Floor 1 - Dining Area



Max Dimensions: 10'5" x 12'4"
Calculated Area: 129 sq. ft
Included: Yes

Heated: Yes
Finished: Yes
Enclosed: Yes
Contiguous: Yes
Permitted: Yes
Wet space: No
Addition: No
Conversion: No

14 Floor 1 - Bath

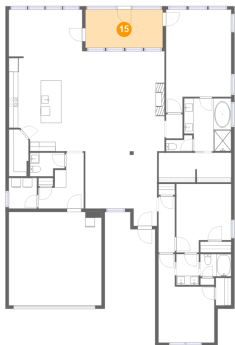


Max Dimensions: 4'10" x 6'8"
Calculated Area: 32 sq. ft
Included: Yes

Heated: Yes
Finished: Yes
Enclosed: Yes
Contiguous: Yes
Permitted: Yes
Wet space: Yes
Addition: No
Conversion: No

112 Summer Walk Lane, Harvest, Madison County, Alabama,
United States, 35749

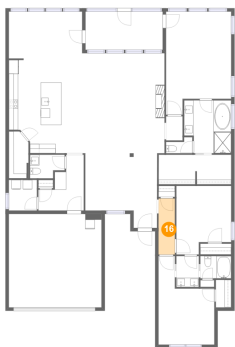
15 Floor 1 - Screened Porch



Max Dimensions: 16'8" x 8'3"
Calculated Area: 138 sq. ft
Included: No

Heated: No
Finished: Yes
Enclosed: No
Contiguous: Yes
Permitted: Yes
Wet space: No
Addition: No
Conversion: No

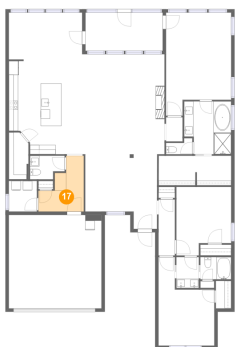
16 Floor 1 - Hall



Max Dimensions: 3'6" x 12'1"
Calculated Area: 43 sq. ft
Included: Yes

Heated: Yes
Finished: Yes
Enclosed: Yes
Contiguous: Yes
Permitted: Yes
Wet space: No
Addition: No
Conversion: No

17 Floor 1 - Hall

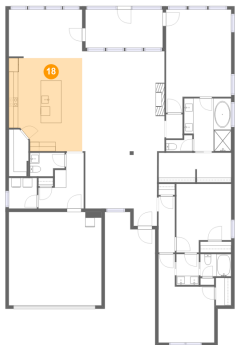


Max Dimensions: 9'9" x 12'1"
Calculated Area: 82 sq. ft
Included: Yes

Heated: Yes
Finished: Yes
Enclosed: Yes
Contiguous: Yes
Permitted: Yes
Wet space: No
Addition: No
Conversion: No

112 Summer Walk Lane, Harvest, Madison County, Alabama,
United States, 35749

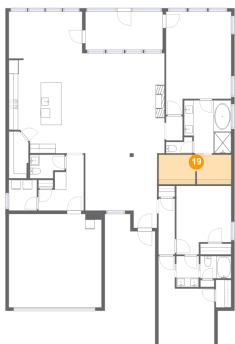
18 Floor 1 - Kitchen



Max Dimensions: 15'10" x 20'1"
Calculated Area: 298 sq. ft
Included: Yes

Heated: Yes
Finished: Yes
Enclosed: Yes
Contiguous: Yes
Permitted: Yes
Wet space: No
Addition: No
Conversion: No

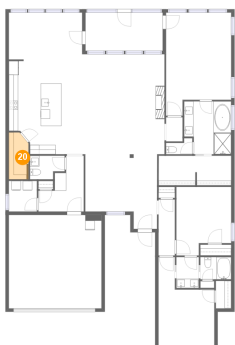
19 Floor 1 - W.I.C.



Max Dimensions: 15'8" x 6'5"
Calculated Area: 99 sq. ft
Included: Yes

Heated: Yes
Finished: Yes
Enclosed: Yes
Contiguous: Yes
Permitted: Yes
Wet space: No
Addition: No
Conversion: No

20 Floor 1 - Pantry

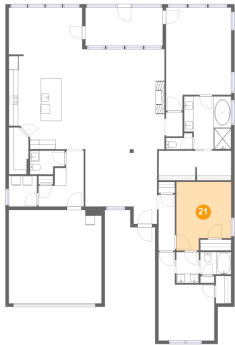


Max Dimensions: 4'3" x 10'1"
Calculated Area: 41 sq. ft
Included: Yes

Heated: Yes
Finished: Yes
Enclosed: Yes
Contiguous: Yes
Permitted: Yes
Wet space: No
Addition: No
Conversion: No

112 Summer Walk Lane, Harvest, Madison County, Alabama,
United States, 35749

21 Floor 1 - Bedroom



Max Dimensions: 11'10" x 14'10"
Calculated Area: 157 sq. ft
Included: Yes

Heated: Yes
Finished: Yes
Enclosed: Yes
Contiguous: Yes
Permitted: Yes
Wet space: No
Addition: No
Conversion: No