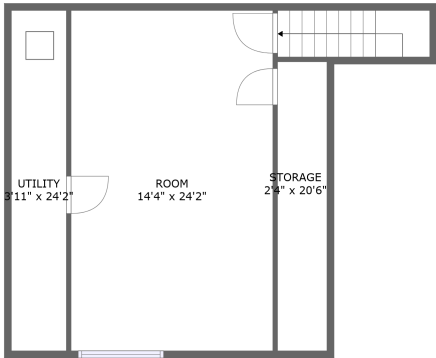
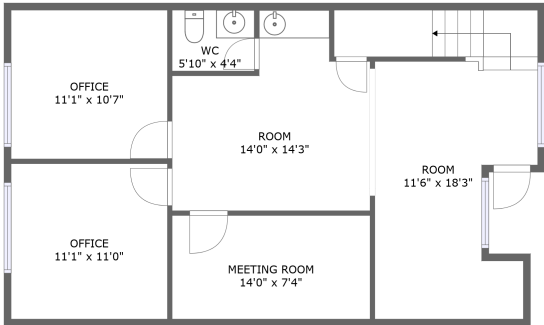


Home report

900 Black Horse Pike, Blackwood, Gloucester County, New Jersey, United States, 08012, A-4



FLOOR 2



FLOOR 1

Total Area: 1279 sq. ft
Floor 1: 787 sq. ft, Floor 2: 492 sq. ft
Excluded: Low ceiling 24 sq. ft, Storage 48 sq. ft, Walls: 118 sq. ft

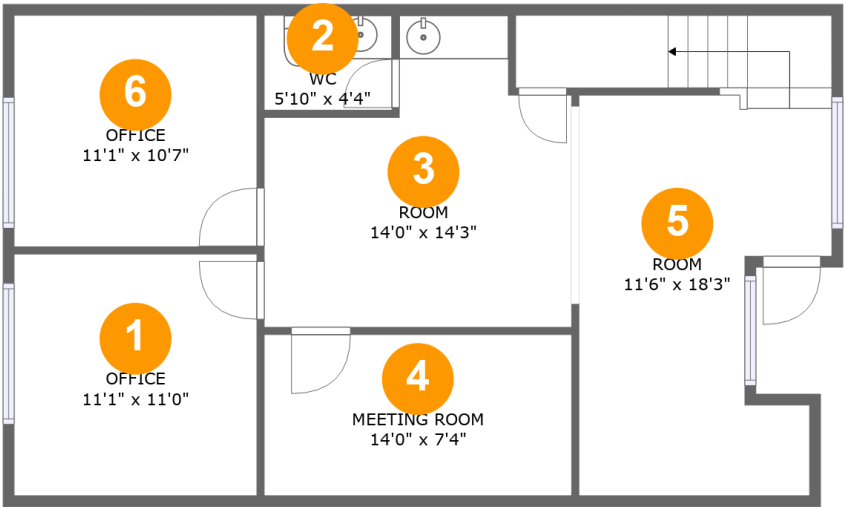
Property summary

 **2** Floors

 **1** Half baths

Home report

900 Black Horse Pike, Blackwood, Gloucester County, New Jersey, United States, 08012, A-4

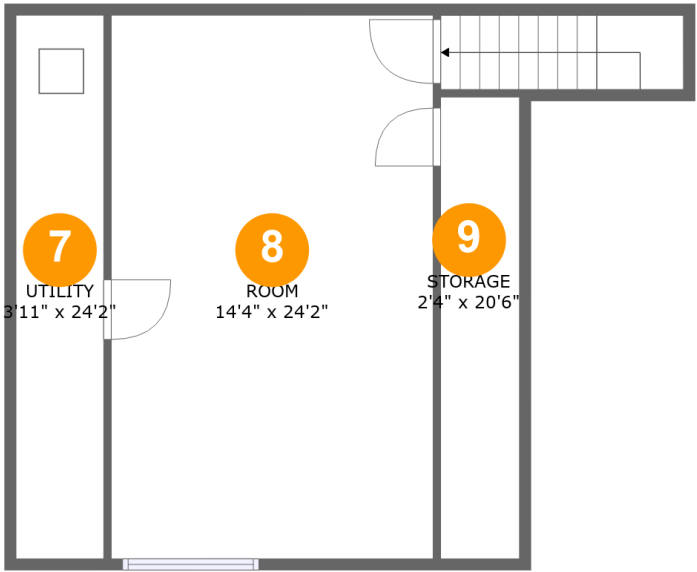


Room dimensions

Floor 1 Total:787sqft Excluded: 0sqft

#		Max Dimensions	sqft	Included
1	Office	11'1" x 11'0"	122 sq. ft	Yes
2	WC	5'10" x 4'4"	25 sq. ft	Yes
3	Room	14'0" x 14'3"	161 sq. ft	Yes
4	Meeting Room	14'0" x 7'4"	103 sq. ft	Yes
5	Room	11'6" x 18'3"	229 sq. ft	Yes
6	Office	11'1" x 10'7"	117 sq. ft	Yes

900 Black Horse Pike, Blackwood, Gloucester County, New Jersey, United States, 08012, A-4



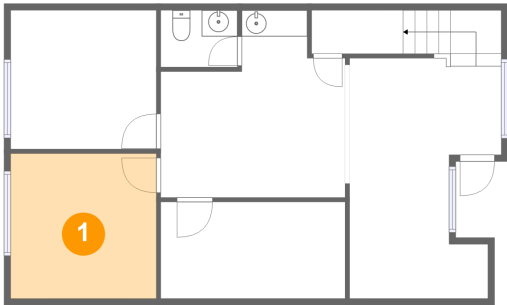
Room dimensions

Floor 2 Total:492sqft Excluded: 72sqft

#		Max Dimensions	sqft	Included
7	Utility	3'11" x 24'2"	94 sq. ft	Yes
8	Room	14'4" x 24'2"	345 sq. ft	Yes
9	Storage	2'4" x 20'6"	48 sq. ft	No

900 Black Horse Pike, Blackwood, Gloucester County, New Jersey, United States, 08012, A-4

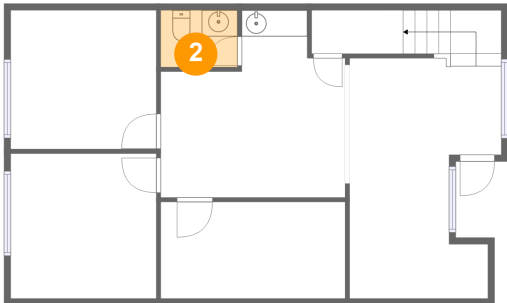
1 Floor 1 - Office



Max Dimensions: 11'1" x 11'0"
Calculated Area: 122 sq. ft
Included: Yes

Heated: Yes
Finished: Yes
Enclosed: Yes
Contiguous: Yes
Permitted: Yes
Wet space: No
Addition: No
Conversion: No

2 Floor 1 - WC

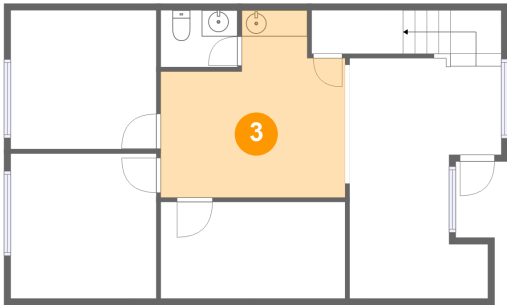


Max Dimensions: 5'10" x 4'4"
Calculated Area: 25 sq. ft
Included: Yes

Heated: Yes
Finished: Yes
Enclosed: Yes
Contiguous: Yes
Permitted: Yes
Wet space: Yes
Addition: No
Conversion: No

900 Black Horse Pike, Blackwood, Gloucester County, New Jersey, United States, 08012, A-4

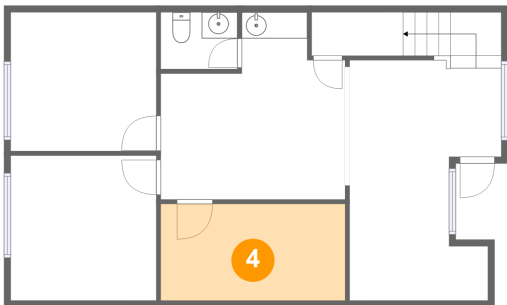
3 Floor 1 - Room



Max Dimensions: 14'0" x 14'3"
Calculated Area: 161 sq. ft
Included: Yes

Heated: Yes
Finished: Yes
Enclosed: Yes
Contiguous: Yes
Permitted: Yes
Wet space: No
Addition: No
Conversion: No

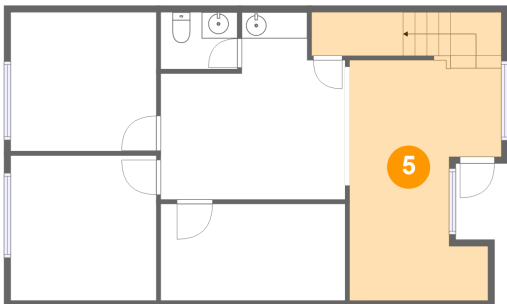
4 Floor 1 - Meeting Room



Max Dimensions: 14'0" x 7'4"
Calculated Area: 103 sq. ft
Included: Yes

Heated: Yes
Finished: Yes
Enclosed: Yes
Contiguous: Yes
Permitted: Yes
Wet space: No
Addition: No
Conversion: No

5 Floor 1 - Room

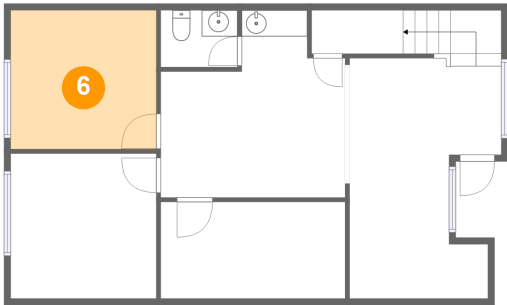


Max Dimensions: 11'6" x 18'3"
Calculated Area: 229 sq. ft
Included: Yes

Heated: Yes
Finished: Yes
Enclosed: Yes
Contiguous: Yes
Permitted: Yes
Wet space: No
Addition: No
Conversion: No

900 Black Horse Pike, Blackwood, Gloucester County, New Jersey, United States, 08012, A-4

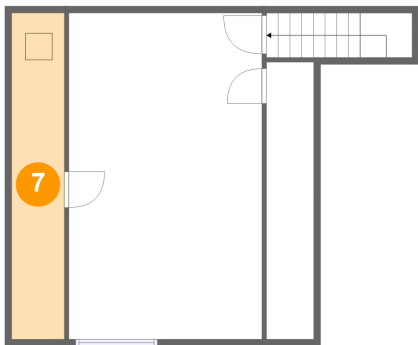
6 Floor 1 - Office



Max Dimensions: 11'1" x 10'7"
Calculated Area: 117 sq. ft
Included: Yes

Heated: Yes
Finished: Yes
Enclosed: Yes
Contiguous: Yes
Permitted: Yes
Wet space: No
Addition: No
Conversion: No

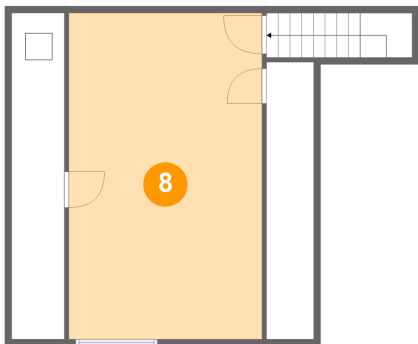
7 Floor 2 - Utility



Max Dimensions: 3'11" x 24'2"
Calculated Area: 94 sq. ft
Included: Yes

Heated: Yes
Finished: Yes
Enclosed: Yes
Contiguous: Yes
Permitted: Yes
Wet space: No
Addition: No
Conversion: No

8 Floor 2 - Room

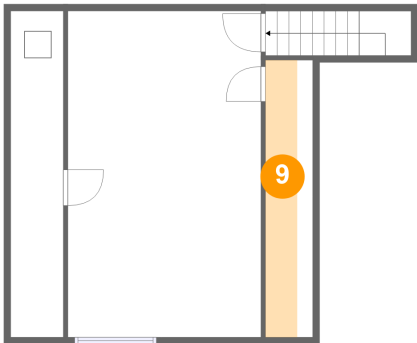


Max Dimensions: 14'4" x 24'2"
Calculated Area: 345 sq. ft
Included: Yes

Heated: Yes
Finished: Yes
Enclosed: Yes
Contiguous: Yes
Permitted: Yes
Wet space: No
Addition: No
Conversion: No

900 Black Horse Pike, Blackwood, Gloucester County, New Jersey, United States, 08012, A-4

9 Floor 2 - Storage



Max Dimensions: 2'4" x 20'6"
Calculated Area: 48 sq. ft
Included: No

Heated: No
Finished: No
Enclosed: No
Contiguous: Yes
Permitted: Yes
Wet space: No
Addition: No
Conversion: No