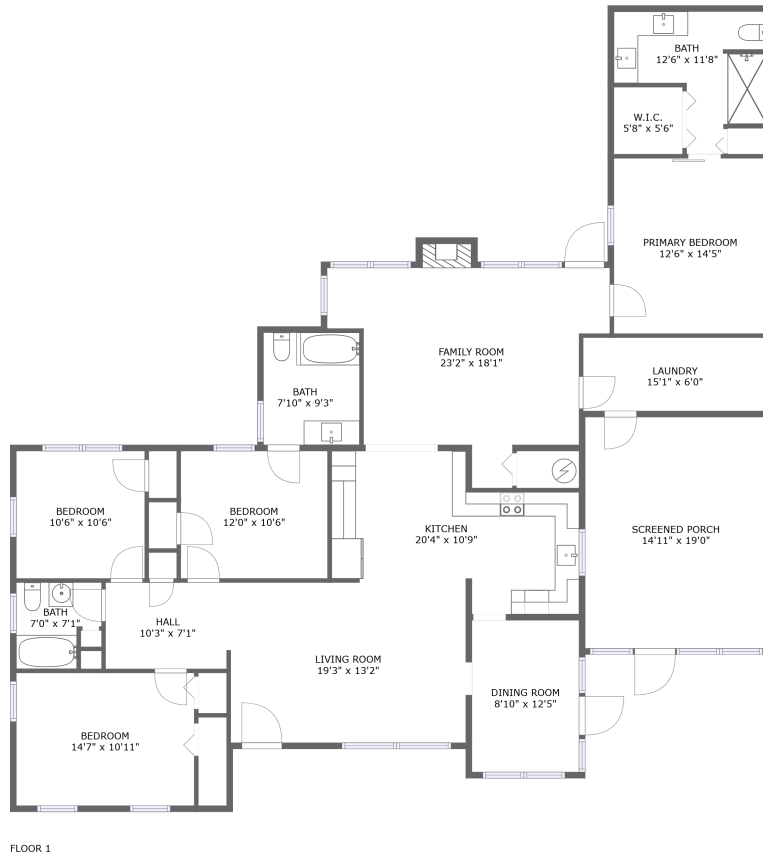


2318 Bristol Avenue, Southwest, Lakeland, Polk County, Florida, United States, 33803



Property Summary


 **0** garages

 **4** bedrooms

 **3** bathrooms

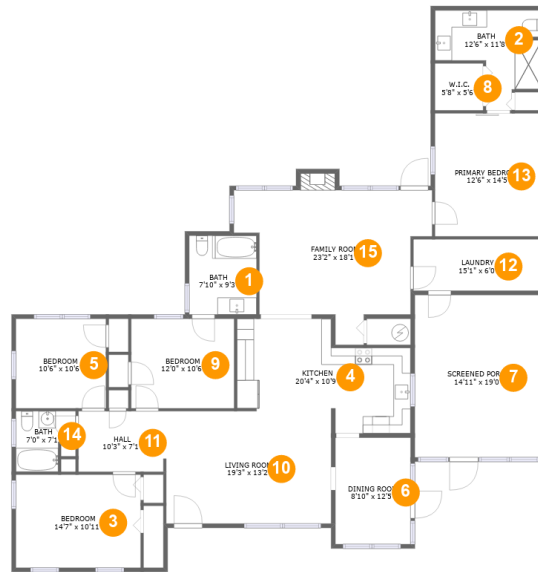
 **0** half baths

 **1** floors

 **2,140** Gross Living Area sqft

 **2,461** total sqft

2318 Bristol Avenue, Southwest, Lakeland, Polk County, Florida, United States, 33803



Room Dimensions

Floor 1

Total sqft: 2461

Living area: 2140

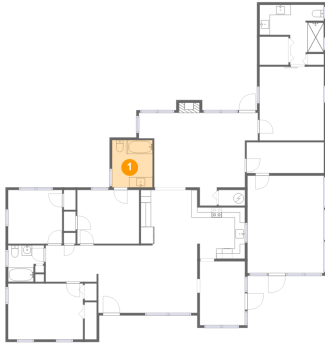
#	Room name	Dimensions	Area (sqft)	Counted as Living Area
1	Bath	7'10" x 9'3"	73 sq. ft	Yes
2	Bath	12'6" x 11'8"	102 sq. ft	Yes
3	Bedroom	14'7" x 10'11"	159 sq. ft	Yes
4	Kitchen	20'4" x 10'9"	210 sq. ft	Yes
5	Bedroom	10'6" x 10'6"	110 sq. ft	Yes
6	Dining Room	8'10" x 12'5"	109 sq. ft	Yes
7	Screened Porch	14'11" x 19'0"	283 sq. ft	No
8	W.i.c.	5'8" x 5'6"	31 sq. ft	Yes
9	Bedroom	12'0" x 10'6"	126 sq. ft	Yes
10	Living Room	19'3" x 13'2"	254 sq. ft	Yes
11	Hall	10'3" x 7'1"	72 sq. ft	Yes

**2318 Bristol Avenue, Southwest, Lakeland, Polk
County, Florida, United States, 33803**

#	Room name	Dimensions	Area (sqft)	Counted as Living Area
12	Laundry	15'1" x 6'0"	91 sq. ft	Yes
13	Primary Bedroom	12'6" x 14'5"	180 sq. ft	Yes
14	Bath	7'0" x 7'1"	42 sq. ft	Yes
15	Family Room	23'2" x 18'1"	305 sq. ft	Yes

2318 Bristol Avenue, Southwest, Lakeland, Polk County, Florida, United States, 33803

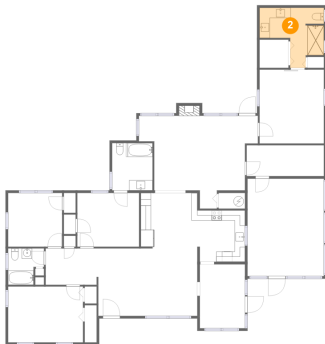
1 Floor 1 - Bath



Dimensions: 7'10" x 9'3"
Area: 73 sq. ft
Counted as Living Area:
Yes

Heated: Yes
Finished: Yes
Enclosed: Yes
Contiguous:
Yes
Permitted: Yes
Wet Space: Yes
Addition: No
Conversion: No

2 Floor 1 - Bath

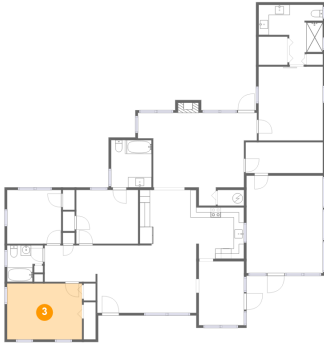


Dimensions: 12'6" x 11'8"
Area: 102 sq. ft
Counted as Living Area:
Yes

Heated: Yes
Finished: Yes
Enclosed: Yes
Contiguous:
Yes
Permitted: Yes
Wet Space: Yes
Addition: No
Conversion: No

2318 Bristol Avenue, Southwest, Lakeland, Polk County, Florida, United States, 33803

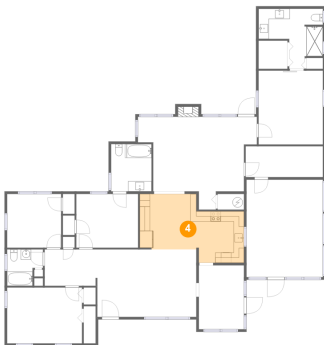
3 Floor 1 - Bedroom



Dimensions: 14'7" x 10'11"
Area: 159 sq. ft
Counted as Living Area:
Yes

Heated: Yes
Finished: Yes
Enclosed: Yes
Contiguous:
Yes
Permitted: Yes
Wet Space: No
Addition: No
Conversion: No

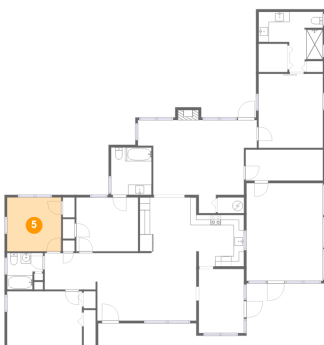
4 Floor 1 - Kitchen



Dimensions: 20'4" x 10'9"
Area: 210 sq. ft
Counted as Living Area:
Yes

Heated: Yes
Finished: Yes
Enclosed: Yes
Contiguous:
Yes
Permitted: Yes
Wet Space: No
Addition: No
Conversion: No

5 Floor 1 - Bedroom

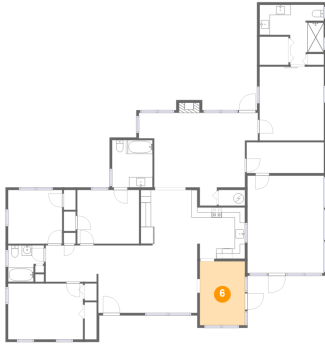


Dimensions: 10'6" x 10'6"
Area: 110 sq. ft
Counted as Living Area:
Yes

Heated: Yes
Finished: Yes
Enclosed: Yes
Contiguous:
Yes
Permitted: Yes
Wet Space: No
Addition: No
Conversion: No

2318 Bristol Avenue, Southwest, Lakeland, Polk County, Florida, United States, 33803

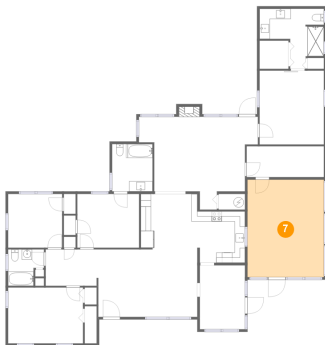
6 Floor 1 - Dining Room



Dimensions: 8'10" x 12'5"
Area: 109 sq. ft
Counted as Living Area: Yes

Heated: Yes
Finished: Yes
Enclosed: Yes
Contiguous: Yes
Permitted: Yes
Wet Space: No
Addition: No
Conversion: No

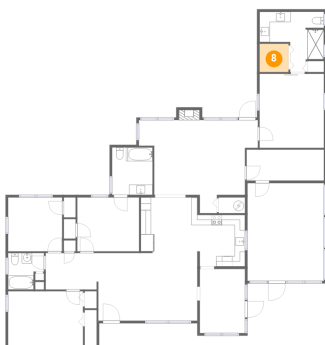
7 Floor 1 - Screened Porch



Dimensions: 14'11" x 19'0"
Area: 283 sq. ft
Counted as Living Area: No

Heated: No
Finished: Yes
Enclosed: No
Contiguous: Yes
Permitted: Yes
Wet Space: No
Addition: No
Conversion: No

8 Floor 1 - W.i.c.

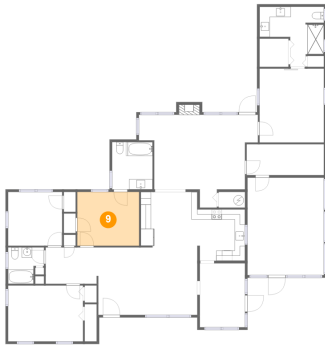


Dimensions: 5'8" x 5'6"
Area: 31 sq. ft
Counted as Living Area: Yes

Heated: Yes
Finished: Yes
Enclosed: Yes
Contiguous: Yes
Permitted: Yes
Wet Space: No
Addition: No
Conversion: No

2318 Bristol Avenue, Southwest, Lakeland, Polk County, Florida, United States, 33803

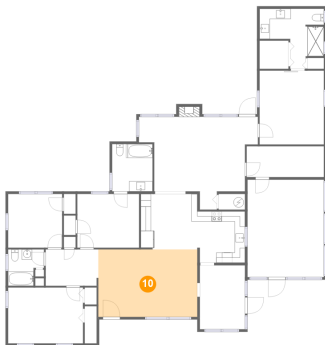
9 Floor 1 - Bedroom



Dimensions: 12'0" x 10'6"
Area: 126 sq. ft
Counted as Living Area:
Yes

Heated: Yes
Finished: Yes
Enclosed: Yes
Contiguous:
Yes
Permitted: Yes
Wet Space: No
Addition: No
Conversion: No

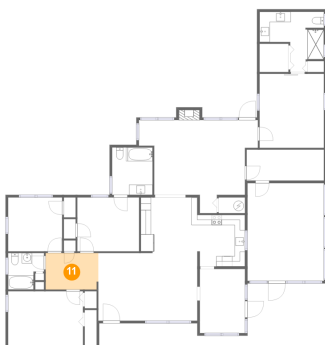
10 Floor 1 - Living Room



Dimensions: 19'3" x 13'2"
Area: 254 sq. ft
Counted as Living Area:
Yes

Heated: Yes
Finished: Yes
Enclosed: Yes
Contiguous:
Yes
Permitted: Yes
Wet Space: No
Addition: No
Conversion: No

11 Floor 1 - Hall

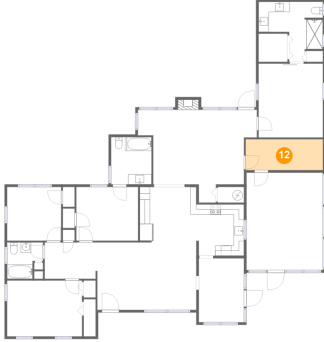


Dimensions: 10'3" x 7'1"
Area: 72 sq. ft
Counted as Living Area:
Yes

Heated: Yes
Finished: Yes
Enclosed: Yes
Contiguous:
Yes
Permitted: Yes
Wet Space: No
Addition: No
Conversion: No

2318 Bristol Avenue, Southwest, Lakeland, Polk County, Florida, United States, 33803

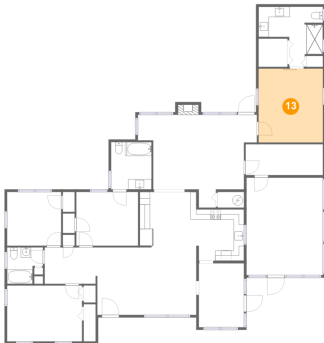
12 Floor 1 - Laundry



Dimensions: 15'1" x 6'0"
Area: 91 sq. ft
Counted as Living Area:
Yes

Heated: Yes
Finished: Yes
Enclosed: Yes
Contiguous:
Yes
Permitted: Yes
Wet Space: No
Addition: No
Conversion: No

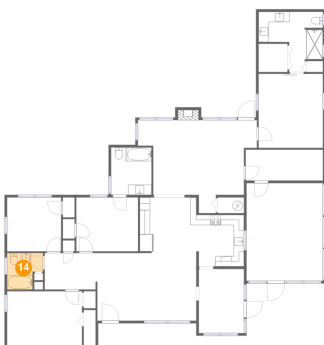
13 Floor 1 - Primary Bedroom



Dimensions: 12'6" x 14'5"
Area: 180 sq. ft
Counted as Living Area:
Yes

Heated: Yes
Finished: Yes
Enclosed: Yes
Contiguous:
Yes
Permitted: Yes
Wet Space: No
Addition: No
Conversion: No

14 Floor 1 - Bath



Dimensions: 7'0" x 7'1"
Area: 42 sq. ft
Counted as Living Area:
Yes

Heated: Yes
Finished: Yes
Enclosed: Yes
Contiguous:
Yes
Permitted: Yes
Wet Space: Yes
Addition: No
Conversion: No

2318 Bristol Avenue, Southwest, Lakeland, Polk County, Florida, United States, 33803

15 Floor 1 - Family Room



Dimensions: 23'2" x 18'1"
Area: 305 sq. ft
Counted as Living Area:
Yes

Heated: Yes
Finished: Yes
Enclosed: Yes
Contiguous:
Yes
Permitted: Yes
Wet Space: No
Addition: No
Conversion: No