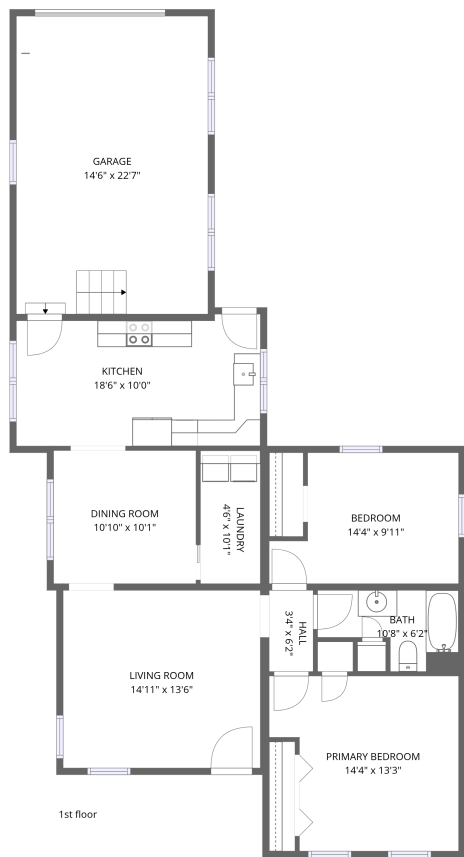


Home data report

824 E Main St, Greensburg, IN, US



Total Area: 1000 sq. ft

1st Floor: 1000 sq. ft

Excluded: Garage 328 sq. ft, Walls: 105 sq. ft

Property summary

 **1** Floors

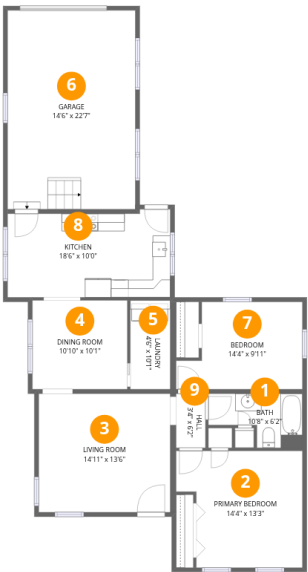
 **2** Bedrooms

 **1** Bathrooms

 **1** Garages

Home data report

824 E Main St, Greensburg, IN, US



Room dimensions

Floor 1 Total:1000sqft Excluded: 328sqft

#		Dimensions	sqft	Counted as living area
1	Bath	10'8" x 6'2"	52 sq. ft	Yes
2	Primary Bedroom	14'4" x 13'3"	171 sq. ft	Yes
3	Living Room	14'11" x 13'6"	201 sq. ft	Yes
4	Dining Room	10'10" x 10'1"	109 sq. ft	Yes
5	Laundry	4'6" x 10'1"	46 sq. ft	Yes
6	Garage	14'6" x 22'7"	328 sq. ft	No
7	Bedroom	14'4" x 9'11"	123 sq. ft	Yes
8	Kitchen	18'6" x 10'0"	178 sq. ft	Yes
9	Hall	3'4" x 6'2"	21 sq. ft	Yes

1 Floor 1 - Bath



Dimensions: 10'8" x 6'2"
Area: 52 sq. ft
Counted as living area: Yes

Heated: Yes
Finished: Yes
Enclosed: Yes
Contiguous: Yes
Permitted: Yes
Wet space: Yes
Addition: No
Conversion: No

2 Floor 1 - Primary Bedroom



Dimensions: 14'4" x 13'3"
Area: 171 sq. ft
Counted as living area: Yes

Heated: Yes
Finished: Yes
Enclosed: Yes
Contiguous: Yes
Permitted: Yes
Wet space: No
Addition: No
Conversion: No

3 Floor 1 - Living Room



Dimensions: 14'11" x 13'6"
Area: 201 sq. ft
Counted as living area: Yes

Heated: Yes
Finished: Yes
Enclosed: Yes
Contiguous: Yes
Permitted: Yes
Wet space: No
Addition: No
Conversion: No

4 Floor 1 - Dining Room



Dimensions: 10'10" x 10'1"
Area: 109 sq. ft
Counted as living area: Yes

Heated: Yes
Finished: Yes
Enclosed: Yes
Contiguous: Yes
Permitted: Yes
Wet space: No
Addition: No
Conversion: No

5 Floor 1 - Laundry



Dimensions: 4'6" x 10'1"
Area: 46 sq. ft
Counted as living area: Yes

Heated: Yes
Finished: Yes
Enclosed: Yes
Contiguous: Yes
Permitted: Yes
Wet space: No
Addition: No
Conversion: No

6 Floor 1 - Garage



Dimensions: 14'6" x 22'7"
Area: 328 sq. ft
Counted as living area: No

Heated: No
Finished: No
Enclosed: Yes
Contiguous: Yes
Permitted: Yes
Wet space: No
Addition: No
Conversion: No

7 Floor 1 - Bedroom



Dimensions: 14'4" x 9'11"
Area: 123 sq. ft
Counted as living area: Yes

Heated: Yes
Finished: Yes
Enclosed: Yes
Contiguous: Yes
Permitted: Yes
Wet space: No
Addition: No
Conversion: No

8 Floor 1 - Kitchen



Dimensions: 18'6" x 10'0"
Area: 178 sq. ft
Counted as living area: Yes

Heated: Yes
Finished: Yes
Enclosed: Yes
Contiguous: Yes
Permitted: Yes
Wet space: No
Addition: No
Conversion: No

9 Floor 1 - Hall



Dimensions: 3'4" x 6'2"
Area: 21 sq. ft
Counted as living area: Yes

Heated: Yes
Finished: Yes
Enclosed: Yes
Contiguous: Yes
Permitted: Yes
Wet space: No
Addition: No
Conversion: No