


121 Suburban Dr NW, Kennesaw, GA, US



Property summary

 **1** Garages

 **4** Bedrooms

 **3** Bathrooms

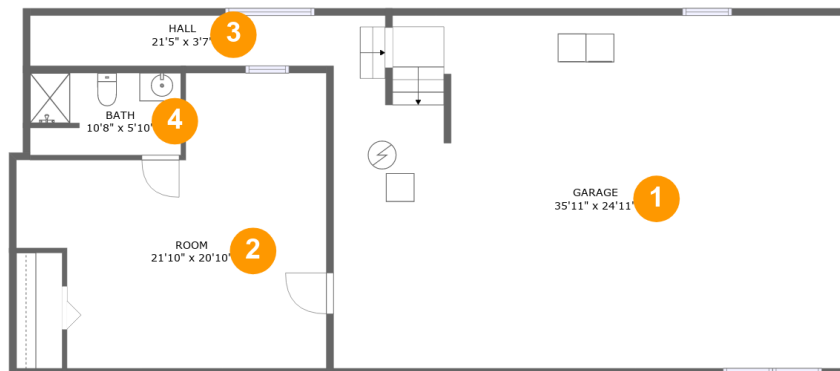
 **0** Half baths

 **2** Floors

 **2,065**
Gross living
area sqft

 **3,744**
Total sqft

121 Suburban Dr NW, Kennesaw, GA, US

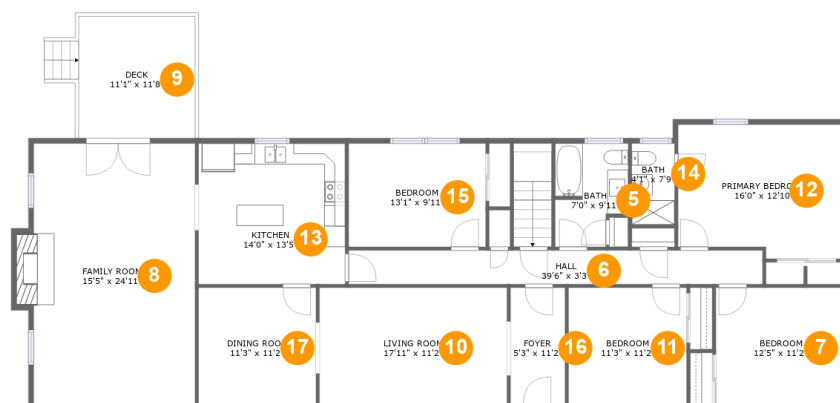


Room dimensions

Floor 1

Total sqft: 1525 Living area: 0

#		Dimensions	sqft	Counted as living area
1	Garage	35'11" x 24'11"	890 sq. ft	No
2	Room	21'10" x 20'10"	352 sq. ft	No
3	Hall	21'5" x 3'7"	76 sq. ft	No
4	Bath	10'8" x 5'10"	61 sq. ft	No

121 Suburban Dr NW, Kennesaw, GA, US**Room dimensions**

Floor 2

Total sqft: 2219 Living area: 2065

#		Dimensions	sqft	Counted as living area
5	Bath	7'0" x 9'11"	61 sq. ft	Yes
6	Hall	39'6" x 3'3"	127 sq. ft	Yes
7	Bedroom	12'5" x 11'2"	138 sq. ft	Yes
8	Living Room	15'5" x 24'11"	395 sq. ft	Yes
9	Outdoor	11'1" x 11'8"	141 sq. ft	No
10	Living Room	17'11" x 11'2"	200 sq. ft	Yes
11	Bedroom	11'3" x 11'2"	126 sq. ft	Yes
12	Bedroom	16'0" x 12'10"	195 sq. ft	Yes
13	Kitchen	14'0" x 13'5"	188 sq. ft	Yes
14	Bath	4'1" x 7'9"	32 sq. ft	Yes
15	Bedroom	13'1" x 9'11"	129 sq. ft	Yes

Scan captured on Fri, 06 Dec 2024 18:27:40 GMT

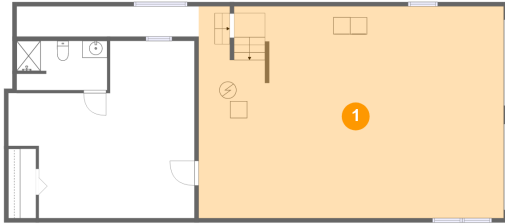
Information is calculated by Cubicasa technology deemed highly reliable but not guaranteed.

121 Suburban Dr NW, Kennesaw, GA, US

#		Dimensions	sqft	Counted as living area
16	Entry	5'3" x 11'2"	58 sq. ft	Yes
17	Dining Room	11'3" x 11'2"	125 sq. ft	Yes

121 Suburban Dr NW, Kennesaw, GA, US

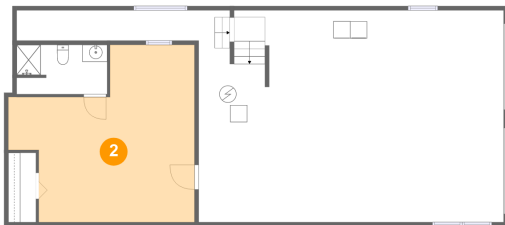
1 Floor 1 - Garage



Dimensions: 35'11" x 24'11"
Area: 890 sq. ft
Counted as living area: No

Heated: No
Finished: No
Enclosed: Yes
Contiguous: Yes
Permitted: Yes
Wet space: No
Addition: No
Conversion: No

2 Floor 1 - Room

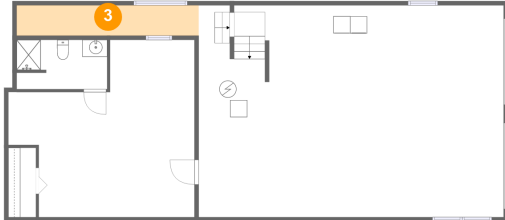


Dimensions: 21'10" x 20'10"
Area: 352 sq. ft
Counted as living area: No

Heated: Yes
Finished: Yes
Enclosed: Yes
Contiguous: No
Permitted: Yes
Wet space: No
Addition: No
Conversion: No

121 Suburban Dr NW, Kennesaw, GA, US

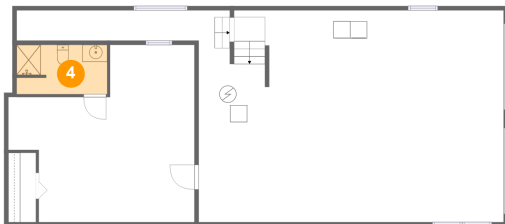
3 Floor 1 - Hall



Dimensions: 21'5" x 3'7"
Area: 76 sq. ft
Counted as living area: No

Heated: Yes
Finished: Yes
Enclosed: Yes
Contiguous: No
Permitted: Yes
Wet space: No
Addition: No
Conversion: No

4 Floor 1 - Bath



Dimensions: 10'8" x 5'10"
Area: 61 sq. ft
Counted as living area: No

Heated: Yes
Finished: Yes
Enclosed: Yes
Contiguous: No
Permitted: Yes
Wet space: Yes
Addition: No
Conversion: No

5 Floor 2 - Bath

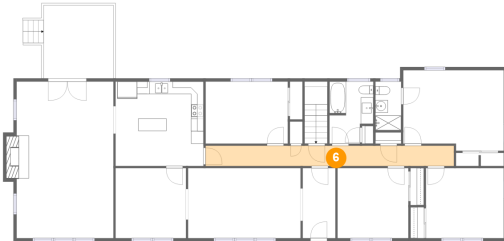


Dimensions: 7'0" x 9'11"
Area: 61 sq. ft
Counted as living area: Yes

Heated: Yes
Finished: Yes
Enclosed: Yes
Contiguous: Yes
Permitted: Yes
Wet space: Yes
Addition: No
Conversion: No

121 Suburban Dr NW, Kennesaw, GA, US

6 Floor 2 - Hall



Dimensions: 39'6" x 3'3"
Area: 127 sq. ft
Counted as living area: Yes

Heated: Yes
Finished: Yes
Enclosed: Yes
Contiguous: Yes
Permitted: Yes
Wet space: No
Addition: No
Conversion: No

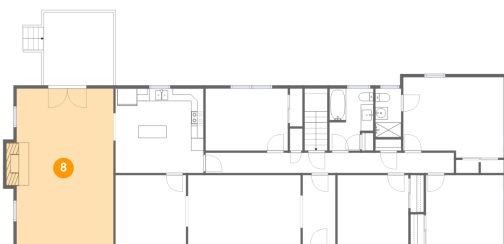
7 Floor 2 - Bedroom



Dimensions: 12'5" x 11'2"
Area: 138 sq. ft
Counted as living area: Yes

Heated: Yes
Finished: Yes
Enclosed: Yes
Contiguous: Yes
Permitted: Yes
Wet space: No
Addition: No
Conversion: No

8 Floor 2 - Living Room



Dimensions: 15'5" x 24'11"
Area: 395 sq. ft
Counted as living area: Yes

Heated: Yes
Finished: Yes
Enclosed: Yes
Contiguous: Yes
Permitted: Yes
Wet space: No
Addition: No
Conversion: No

121 Suburban Dr NW, Kennesaw, GA, US

9 Floor 2 - Outdoor



Dimensions: 11'1" x 11'8"
Area: 141 sq. ft
Counted as living area: No

Heated: No
Finished: Yes
Enclosed: No
Contiguous: Yes
Permitted: Yes
Wet space: No
Addition: No
Conversion: No

10 Floor 2 - Living Room



Dimensions: 17'11" x 11'2"
Area: 200 sq. ft
Counted as living area: Yes

Heated: Yes
Finished: Yes
Enclosed: Yes
Contiguous: Yes
Permitted: Yes
Wet space: No
Addition: No
Conversion: No

11 Floor 2 - Bedroom



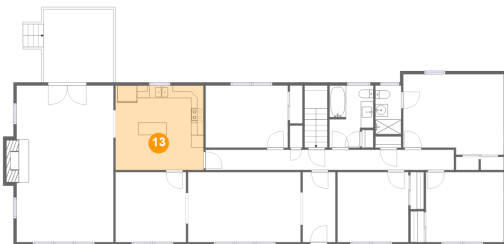
Dimensions: 11'3" x 11'2"
Area: 126 sq. ft
Counted as living area: Yes

Heated: Yes
Finished: Yes
Enclosed: Yes
Contiguous: Yes
Permitted: Yes
Wet space: No
Addition: No
Conversion: No

121 Suburban Dr NW, Kennesaw, GA, US**12 Floor 2 - Bedroom**

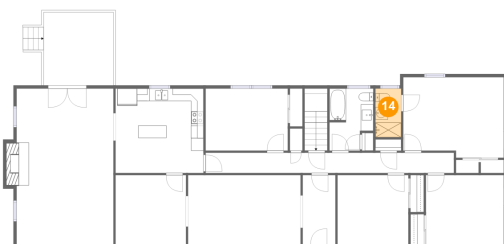
Dimensions: 16'0" x 12'10"
Area: 195 sq. ft
Counted as living area: Yes

Heated: Yes
Finished: Yes
Enclosed: Yes
Contiguous: Yes
Permitted: Yes
Wet space: No
Addition: No
Conversion: No

13 Floor 2 - Kitchen

Dimensions: 14'0" x 13'5"
Area: 188 sq. ft
Counted as living area: Yes

Heated: Yes
Finished: Yes
Enclosed: Yes
Contiguous: Yes
Permitted: Yes
Wet space: No
Addition: No
Conversion: No

14 Floor 2 - Bath

Dimensions: 4'1" x 7'9"
Area: 32 sq. ft
Counted as living area: Yes

Heated: Yes
Finished: Yes
Enclosed: Yes
Contiguous: Yes
Permitted: Yes
Wet space: Yes
Addition: No
Conversion: No

121 Suburban Dr NW, Kennesaw, GA, US

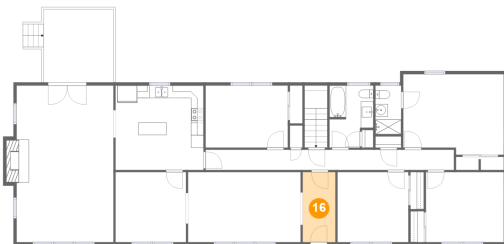
15 Floor 2 - Bedroom



Dimensions: 13'1" x 9'11"
Area: 129 sq. ft
Counted as living area: Yes

Heated: Yes
Finished: Yes
Enclosed: Yes
Contiguous: Yes
Permitted: Yes
Wet space: No
Addition: No
Conversion: No

16 Floor 2 - Entry



Dimensions: 5'3" x 11'2"
Area: 58 sq. ft
Counted as living area: Yes

Heated: Yes
Finished: Yes
Enclosed: Yes
Contiguous: Yes
Permitted: Yes
Wet space: No
Addition: No
Conversion: No

17 Floor 2 - Dining Room



Dimensions: 11'3" x 11'2"
Area: 125 sq. ft
Counted as living area: Yes

Heated: Yes
Finished: Yes
Enclosed: Yes
Contiguous: Yes
Permitted: Yes
Wet space: No
Addition: No
Conversion: No