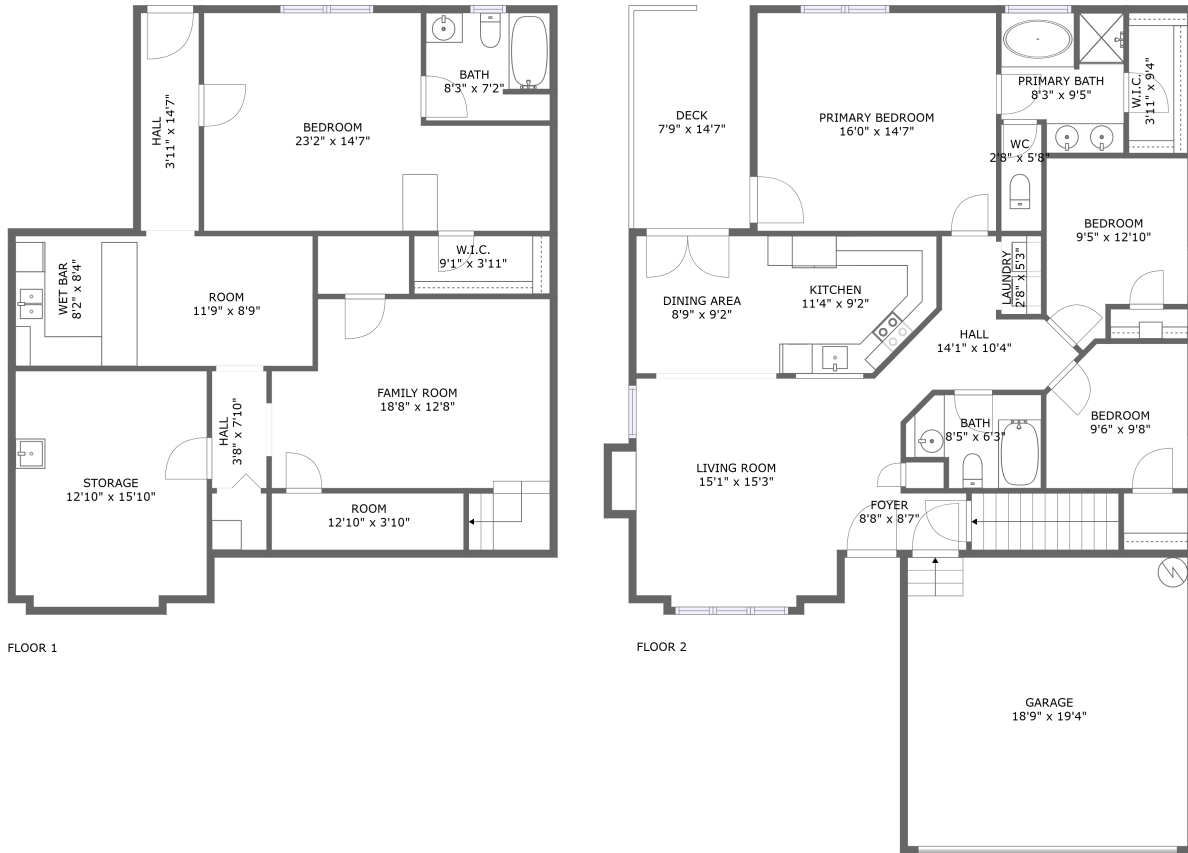



140 Artesian Ln NW, Madison, Alabama, United States



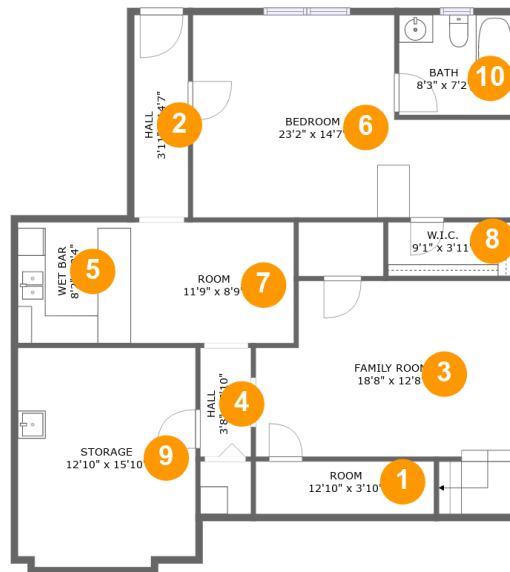
Property Summary

 **1** garages  **4** bedrooms  **3** bathrooms  **0** half baths

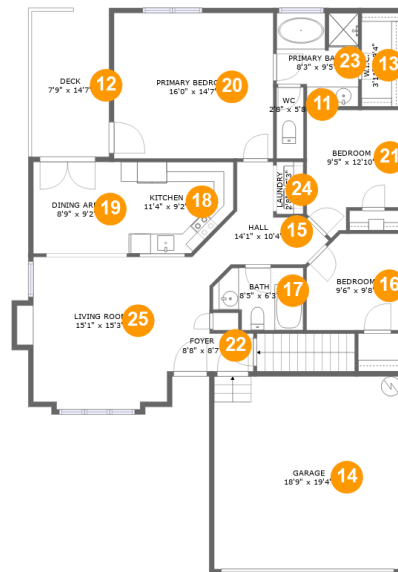
 **2** floors

 **2,357** Gross Living Area sqft

 **3,134** total sqft

140 Artesian Ln NW, Madison, Alabama, United States**Room Dimensions****Floor 1****Total sqft: 1286****Living area: 1015**

#	Room name	Dimensions	Area (sqft)	Counted as Living Area
1	Room	12'10" x 3'10"	49 sq. ft	No
2	Hall	3'11" x 14'7"	57 sq. ft	Yes
3	Family Room	18'8" x 12'8"	244 sq. ft	Yes
4	Hall	3'8" x 7'10"	29 sq. ft	Yes
5	Wet Bar	8'2" x 8'4"	71 sq. ft	Yes
6	Bedroom	23'2" x 14'7"	274 sq. ft	Yes
7	Room	11'9" x 8'9"	103 sq. ft	Yes
8	W.i.c.	9'1" x 3'11"	35 sq. ft	Yes
9	Storage	12'10" x 15'10"	199 sq. ft	No
10	Bath	8'3" x 7'2"	59 sq. ft	Yes

140 Artesian Ln NW, Madison, Alabama, United States**Room Dimensions****Floor 2****Total sqft: 1848****Living area: 1342**

#	Room name	Dimensions	Area (sqft)	Counted as Living Area
11	Wc	2'8" x 5'8"	19 sq. ft	Yes
12	Deck	7'9" x 14'7"	114 sq. ft	No
13	W.i.c.	3'11" x 9'4"	37 sq. ft	Yes
14	Garage	18'9" x 19'4"	363 sq. ft	No
15	Hall	14'1" x 10'4"	86 sq. ft	Yes
16	Bedroom	9'6" x 9'8"	86 sq. ft	Yes
17	Bath	8'5" x 6'3"	49 sq. ft	Yes
18	Kitchen	11'4" x 9'2"	97 sq. ft	Yes
19	Dining Area	8'9" x 9'2"	81 sq. ft	Yes
20	Primary Bedroom	16'0" x 14'7"	234 sq. ft	Yes
21	Bedroom	9'5" x 12'10"	101 sq. ft	Yes

Scan captured on Tue, 17 Sep 2024 16:25:57 GMT

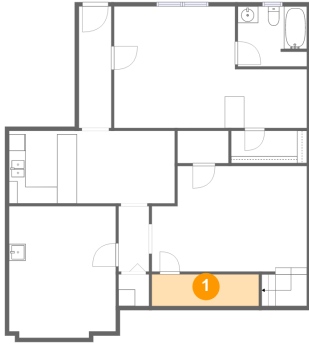
Information is calculated by CubiCasa technology; deemed highly reliable but not guaranteed.

140 Artesian Ln NW, Madison, Alabama, United States

#	Room name	Dimensions	Area (sqft)	Counted as Living Area
22	Foyer	8'8" x 8'7"	53 sq. ft	Yes
23	Primary Bath	8'3" x 9'5"	69 sq. ft	Yes
24	Laundry	2'8" x 5'3"	14 sq. ft	Yes
25	Living Room	15'1" x 15'3"	209 sq. ft	Yes

140 Artesian Ln NW, Madison, Alabama, United States

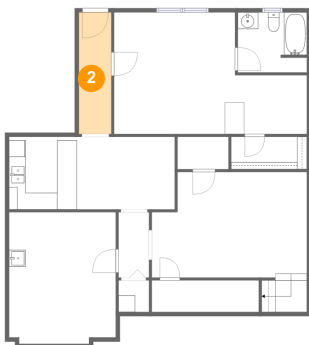
1 Floor 1 - Room



Dimensions: 12'10" x 3'10"
Area: 49 sq. ft
Counted as Living Area: No

Heated: No
Finished: No
Enclosed: Yes
Contiguous: Yes
Permitted: Yes
Wet Space: No
Addition: No
Conversion: No

2 Floor 1 - Hall

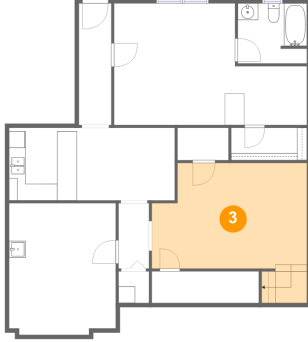


Dimensions: 3'11" x 14'7"
Area: 57 sq. ft
Counted as Living Area:
Yes

Heated: Yes
Finished: Yes
Enclosed: Yes
Contiguous:
Yes
Permitted: Yes
Wet Space: No
Addition: No
Conversion: No

140 Artesian Ln NW, Madison, Alabama, United States

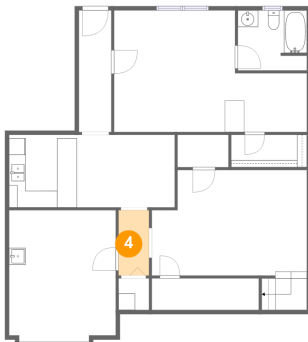
3 Floor 1 - Family Room



Dimensions: 18'8" x 12'8"
Area: 244 sq. ft
Counted as Living Area:
Yes

Heated: Yes
Finished: Yes
Enclosed: Yes
Contiguous:
Yes
Permitted: Yes
Wet Space: No
Addition: No
Conversion: No

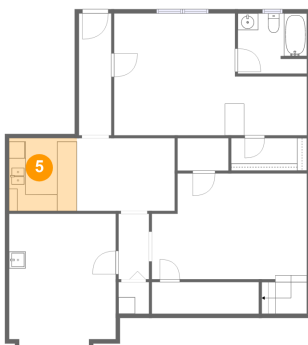
4 Floor 1 - Hall



Dimensions: 3'8" x 7'10"
Area: 29 sq. ft
Counted as Living Area:
Yes

Heated: Yes
Finished: Yes
Enclosed: Yes
Contiguous:
Yes
Permitted: Yes
Wet Space: No
Addition: No
Conversion: No

5 Floor 1 - Wet Bar

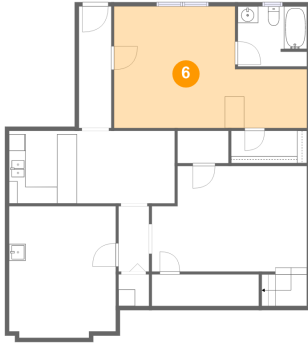


Dimensions: 8'2" x 8'4"
Area: 71 sq. ft
Counted as Living Area:
Yes

Heated: Yes
Finished: Yes
Enclosed: Yes
Contiguous:
Yes
Permitted: Yes
Wet Space: No
Addition: No
Conversion: No

140 Artesian Ln NW, Madison, Alabama, United States

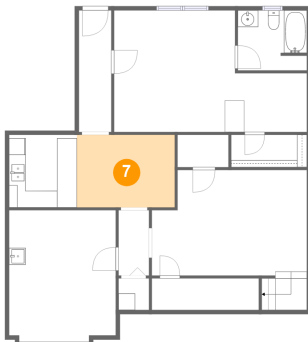
6 Floor 1 - Bedroom



Dimensions: 23'2" x 14'7"
Area: 274 sq. ft
Counted as Living Area:
Yes

Heated: Yes
Finished: Yes
Enclosed: Yes
Contiguous:
Yes
Permitted: Yes
Wet Space: No
Addition: No
Conversion: No

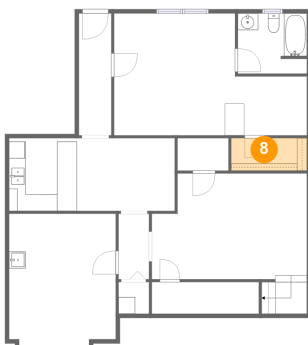
7 Floor 1 - Room



Dimensions: 11'9" x 8'9"
Area: 103 sq. ft
Counted as Living Area:
Yes

Heated: Yes
Finished: Yes
Enclosed: Yes
Contiguous:
Yes
Permitted: Yes
Wet Space: No
Addition: No
Conversion: No

8 Floor 1 - W.i.c.

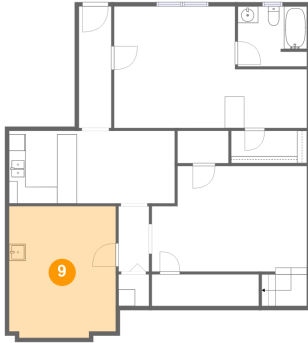


Dimensions: 9'1" x 3'11"
Area: 35 sq. ft
Counted as Living Area:
Yes

Heated: Yes
Finished: Yes
Enclosed: Yes
Contiguous:
Yes
Permitted: Yes
Wet Space: No
Addition: No
Conversion: No

140 Artesian Ln NW, Madison, Alabama, United States

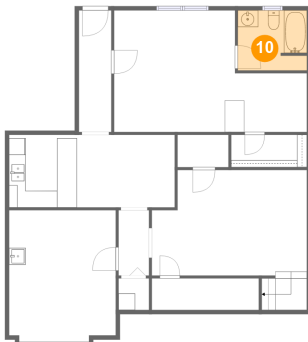
9 Floor 1 - Storage



Dimensions: 12'10" x 15'10"
Area: 199 sq. ft
Counted as Living Area: No

Heated: No
Finished: No
Enclosed: No
Contiguous: Yes
Permitted: Yes
Wet Space: No
Addition: No
Conversion: No

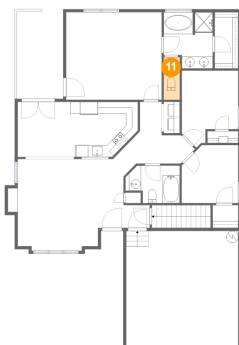
10 Floor 1 - Bath



Dimensions: 8'3" x 7'2"
Area: 59 sq. ft
Counted as Living Area: Yes

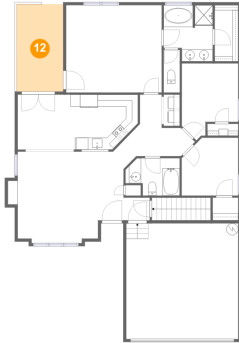
Heated: Yes
Finished: Yes
Enclosed: Yes
Contiguous: Yes
Permitted: Yes
Wet Space: Yes
Addition: No
Conversion: No

11 Floor 2 - Wc



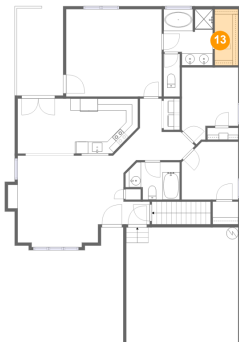
Dimensions: 2'8" x 5'8"
Area: 19 sq. ft
Counted as Living Area: Yes

Heated: Yes
Finished: Yes
Enclosed: Yes
Contiguous: Yes
Permitted: Yes
Wet Space: Yes
Addition: No
Conversion: No

140 Artesian Ln NW, Madison, Alabama, United States**12 Floor 2 - Deck**

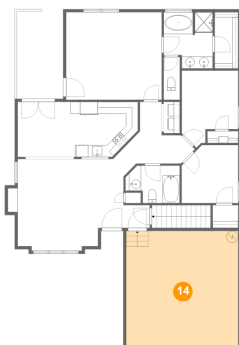
Dimensions: 7'9" x 14'7"
Area: 114 sq. ft
Counted as Living Area: No

Heated: No
Finished: No
Enclosed: No
Contiguous: Yes
Permitted: Yes
Wet Space: No
Addition: No
Conversion: No

13 Floor 2 - W.i.c.

Dimensions: 3'11" x 9'4"
Area: 37 sq. ft
Counted as Living Area: Yes

Heated: Yes
Finished: Yes
Enclosed: Yes
Contiguous: Yes
Permitted: Yes
Wet Space: No
Addition: No
Conversion: No

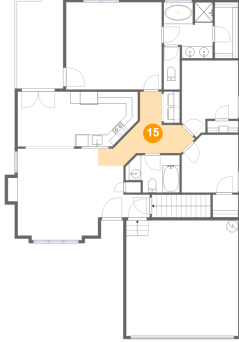
14 Floor 2 - Garage

Dimensions: 18'9" x 19'4"
Area: 363 sq. ft
Counted as Living Area: No

Heated: No
Finished: No
Enclosed: Yes
Contiguous: Yes
Permitted: Yes
Wet Space: No
Addition: No
Conversion: No

140 Artesian Ln NW, Madison, Alabama, United States

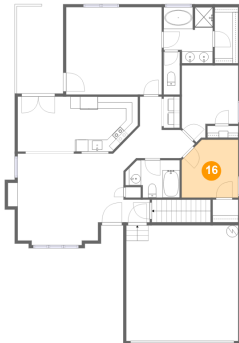
15 Floor 2 - Hall



Dimensions: 14'1" x 10'4"
Area: 86 sq. ft
Counted as Living Area:
Yes

Heated: Yes
Finished: Yes
Enclosed: Yes
Contiguous:
Yes
Permitted: Yes
Wet Space: No
Addition: No
Conversion: No

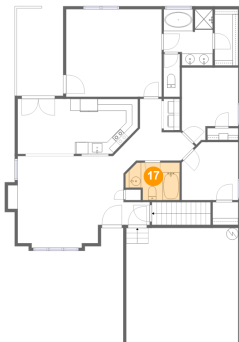
16 Floor 2 - Bedroom



Dimensions: 9'6" x 9'8"
Area: 86 sq. ft
Counted as Living Area:
Yes

Heated: Yes
Finished: Yes
Enclosed: Yes
Contiguous:
Yes
Permitted: Yes
Wet Space: No
Addition: No
Conversion: No

17 Floor 2 - Bath

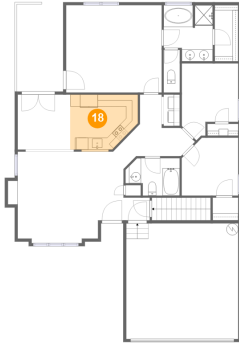


Dimensions: 8'5" x 6'3"
Area: 49 sq. ft
Counted as Living Area:
Yes

Heated: Yes
Finished: Yes
Enclosed: Yes
Contiguous:
Yes
Permitted: Yes
Wet Space: Yes
Addition: No
Conversion: No

140 Artesian Ln NW, Madison, Alabama, United States

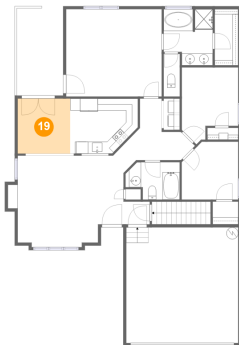
18 Floor 2 - Kitchen



Dimensions: 11'4" x 9'2"
Area: 97 sq. ft
Counted as Living Area:
Yes

Heated: Yes
Finished: Yes
Enclosed: Yes
Contiguous:
Yes
Permitted: Yes
Wet Space: No
Addition: No
Conversion: No

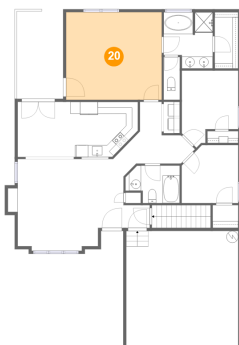
19 Floor 2 - Dining Area



Dimensions: 8'9" x 9'2"
Area: 81 sq. ft
Counted as Living Area:
Yes

Heated: Yes
Finished: Yes
Enclosed: Yes
Contiguous:
Yes
Permitted: Yes
Wet Space: No
Addition: No
Conversion: No

20 Floor 2 - Primary Bedroom

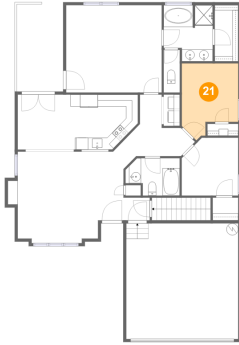


Dimensions: 16'0" x 14'7"
Area: 234 sq. ft
Counted as Living Area:
Yes

Heated: Yes
Finished: Yes
Enclosed: Yes
Contiguous:
Yes
Permitted: Yes
Wet Space: No
Addition: No
Conversion: No

140 Artesian Ln NW, Madison, Alabama, United States

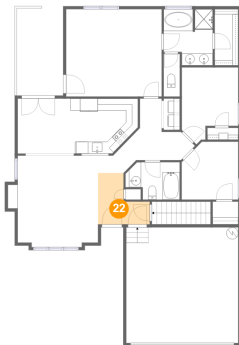
21 Floor 2 - Bedroom



Dimensions: 9'5" x 12'10"
Area: 101 sq. ft
Counted as Living Area:
Yes

Heated: Yes
Finished: Yes
Enclosed: Yes
Contiguous:
Yes
Permitted: Yes
Wet Space: No
Addition: No
Conversion: No

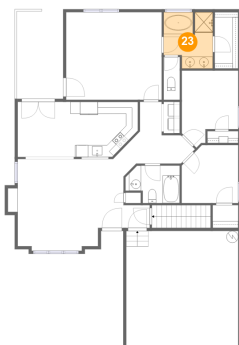
22 Floor 2 - Foyer



Dimensions: 8'8" x 8'7"
Area: 53 sq. ft
Counted as Living Area:
Yes

Heated: Yes
Finished: Yes
Enclosed: Yes
Contiguous:
Yes
Permitted: Yes
Wet Space: No
Addition: No
Conversion: No

23 Floor 2 - Primary Bath

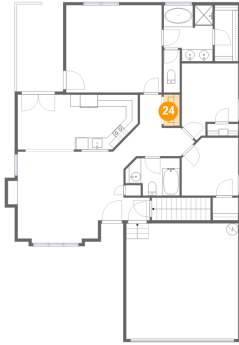


Dimensions: 8'3" x 9'5"
Area: 69 sq. ft
Counted as Living Area:
Yes

Heated: Yes
Finished: Yes
Enclosed: Yes
Contiguous:
Yes
Permitted: Yes
Wet Space: Yes
Addition: No
Conversion: No

140 Artesian Ln NW, Madison, Alabama, United States

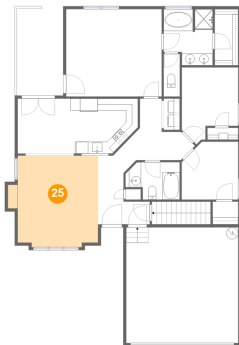
24 Floor 2 - Laundry



Dimensions: 2'8" x 5'3"
Area: 14 sq. ft
Counted as Living Area:
Yes

Heated: Yes
Finished: Yes
Enclosed: Yes
Contiguous:
Yes
Permitted: Yes
Wet Space: No
Addition: No
Conversion: No

25 Floor 2 - Living Room



Dimensions: 15'1" x 15'3"
Area: 209 sq. ft
Counted as Living Area:
Yes

Heated: Yes
Finished: Yes
Enclosed: Yes
Contiguous:
Yes
Permitted: Yes
Wet Space: No
Addition: No
Conversion: No