

Home report

71 Cedar Ln, Gunn, New Castle, Craig County, Virginia, United States, 24127



Total Area: 2092 sq. ft

Floor 1: 1391 sq. ft, Floor 2: 701 sq. ft

Excluded: Outdoor Porch 279 sq. ft, Outdoor Patio Covered 131 sq. ft, Outdoor Deck 282 sq. ft, Undefined 25 sq. ft, Opentobelow 291 sq. ft, Low Ceiling 186 sq. ft

Property summary

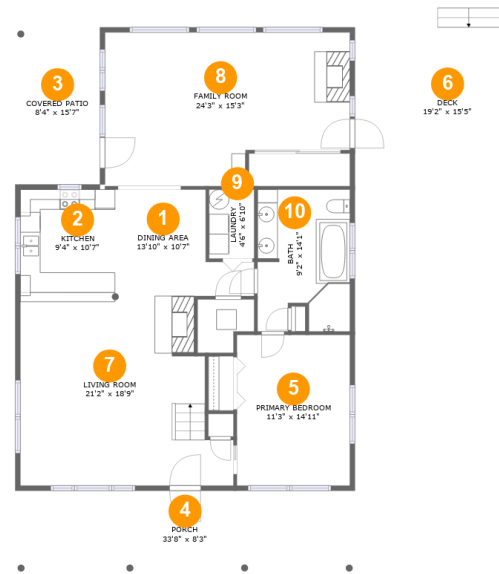
 **2** Floors

 **2** Bedrooms

 **2** Bathrooms

Home report

71 Cedar Ln, Gunn, New Castle, Craig County, Virginia, United States, 24127



Room dimensions

Floor 1

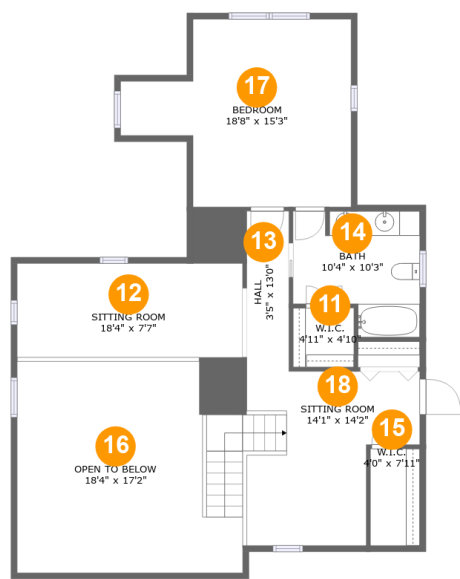
Total:1391sqft

Excluded: 717sqft

#		Max Dimensions	sqft	Included
1	Dining Area	13'10" x 10'7"	111 sq. ft	Yes
2	Kitchen	9'4" x 10'7"	99 sq. ft	Yes
3	Covered Patio	8'4" x 15'7"	131 sq. ft	No
4	Porch	33'8" x 8'3"	279 sq. ft	No
5	Primary Bedroom	11'3" x 14'11"	168 sq. ft	Yes
6	Deck	19'2" x 15'5"	282 sq. ft	No
7	Living Room	21'2" x 18'9"	350 sq. ft	Yes
8	Family Room	24'3" x 15'3"	333 sq. ft	Yes
9	Laundry	4'6" x 6'10"	31 sq. ft	Yes
10	Bath	9'2" x 14'1"	122 sq. ft	Yes

Home report

71 Cedar Ln, Gunn, New Castle, Craig County, Virginia, United States, 24127



Room dimensions

Floor 2

Total:700sqft Excluded: 477sqft

#		Max Dimensions	sqft	Included
11	W.I.C.	4'11" x 4'10"	24 sq. ft	Yes
12	Sitting Room	18'4" x 7'7"	79 sq. ft	Yes
13	Hall	3'5" x 13'0"	45 sq. ft	Yes
14	Bath	10'4" x 10'3"	90 sq. ft	Yes
15	W.I.C.	4'0" x 7'11"	12 sq. ft	Yes
16	Open To Below	18'4" x 17'2"	272 sq. ft	No
17	Bedroom	18'8" x 15'3"	207 sq. ft	Yes
18	Sitting Room	14'1" x 14'2"	157 sq. ft	Yes

71 Cedar Ln, Gunn, New Castle, Craig County, Virginia, United States, 24127

1 Floor 1 - Dining Area



Max Dimensions: 13'10" x 10'7"
Calculated Area: 111 sq. ft
Included: Yes

Heated: Yes
Finished: Yes
Enclosed: Yes
Contiguous: Yes
Permitted: Yes
Wet space: No
Addition: No
Conversion: No

2 Floor 1 - Kitchen



Max Dimensions: 9'4" x 10'7"
Calculated Area: 99 sq. ft
Included: Yes

Heated: Yes
Finished: Yes
Enclosed: Yes
Contiguous: Yes
Permitted: Yes
Wet space: No
Addition: No
Conversion: No

71 Cedar Ln, Gunn, New Castle, Craig County, Virginia, United States, 24127

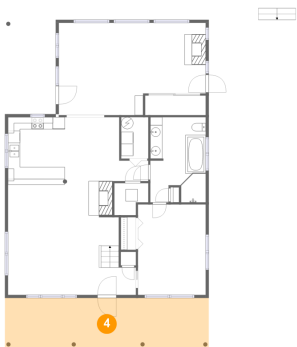
3 Floor 1 - Covered Patio



Max Dimensions: 8'4" x 15'7"
Calculated Area: 131 sq. ft
Included: No

Heated: No
Finished: Yes
Enclosed: No
Contiguous: Yes
Permitted: Yes
Wet space: No
Addition: No
Conversion: No

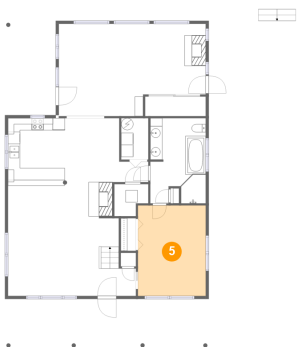
4 Floor 1 - Porch



Max Dimensions: 33'8" x 8'3"
Calculated Area: 279 sq. ft
Included: No

Heated: No
Finished: Yes
Enclosed: No
Contiguous: Yes
Permitted: Yes
Wet space: No
Addition: No
Conversion: No

5 Floor 1 - Primary Bedroom

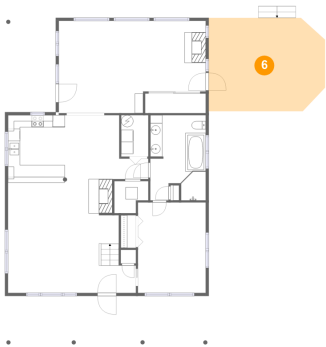


Max Dimensions: 11'3" x 14'11"
Calculated Area: 168 sq. ft
Included: Yes

Heated: Yes
Finished: Yes
Enclosed: Yes
Contiguous: Yes
Permitted: Yes
Wet space: No
Addition: No
Conversion: No

71 Cedar Ln, Gunn, New Castle, Craig County, Virginia, United States, 24127

6 Floor 1 - Deck



Max Dimensions: 19'2" x 15'5"
Calculated Area: 282 sq. ft
Included: No

Heated: No
Finished: Yes
Enclosed: No
Contiguous: Yes
Permitted: Yes
Wet space: No
Addition: No
Conversion: No

7 Floor 1 - Living Room



Max Dimensions: 21'2" x 18'9"
Calculated Area: 350 sq. ft
Included: Yes

Heated: Yes
Finished: Yes
Enclosed: Yes
Contiguous: Yes
Permitted: Yes
Wet space: No
Addition: No
Conversion: No

8 Floor 1 - Family Room



Max Dimensions: 24'3" x 15'3"
Calculated Area: 333 sq. ft
Included: Yes

Heated: Yes
Finished: Yes
Enclosed: Yes
Contiguous: Yes
Permitted: Yes
Wet space: No
Addition: No
Conversion: No

71 Cedar Ln, Gunn, New Castle, Craig County, Virginia, United States, 24127

9 Floor 1 - Laundry



Max Dimensions: 4'6" x 6'10"
Calculated Area: 31 sq. ft
Included: Yes

Heated: Yes
Finished: Yes
Enclosed: Yes
Contiguous: Yes
Permitted: Yes
Wet space: No
Addition: No
Conversion: No

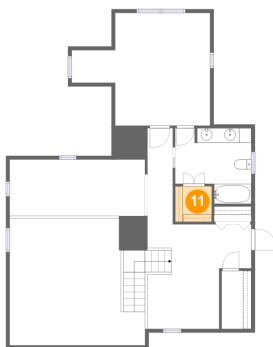
10 Floor 1 - Bath



Max Dimensions: 9'2" x 14'1"
Calculated Area: 122 sq. ft
Included: Yes

Heated: Yes
Finished: Yes
Enclosed: Yes
Contiguous: Yes
Permitted: Yes
Wet space: Yes
Addition: No
Conversion: No

11 Floor 2 - W.I.C.

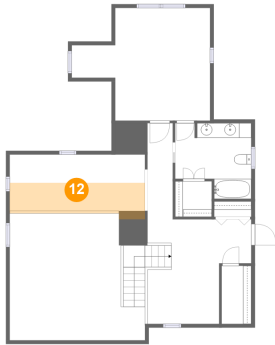


Max Dimensions: 4'11" x 4'10"
Calculated Area: 24 sq. ft
Included: Yes

Heated: Yes
Finished: Yes
Enclosed: Yes
Contiguous: Yes
Permitted: Yes
Wet space: No
Addition: No
Conversion: No

71 Cedar Ln, Gunn, New Castle, Craig County, Virginia, United States, 24127

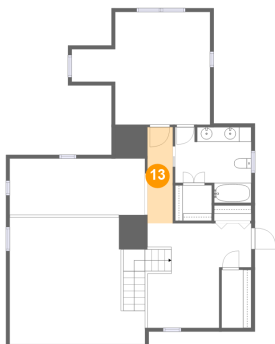
12 Floor 2 - Sitting Room



Max Dimensions: 18'4" x 7'7"
Calculated Area: 79 sq. ft
Included: Yes

Heated: Yes
Finished: Yes
Enclosed: Yes
Contiguous: Yes
Permitted: Yes
Wet space: No
Addition: No
Conversion: No

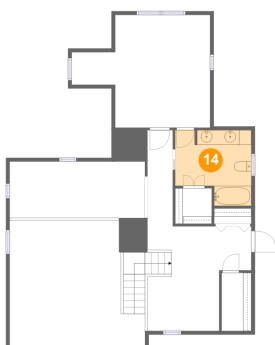
13 Floor 2 - Hall



Max Dimensions: 3'5" x 13'0"
Calculated Area: 45 sq. ft
Included: Yes

Heated: Yes
Finished: Yes
Enclosed: Yes
Contiguous: Yes
Permitted: Yes
Wet space: No
Addition: No
Conversion: No

14 Floor 2 - Bath

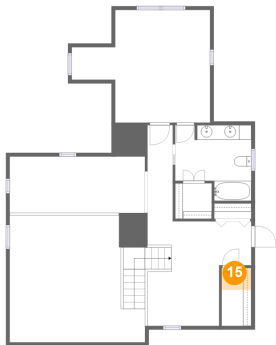


Max Dimensions: 10'4" x 10'3"
Calculated Area: 90 sq. ft
Included: Yes

Heated: Yes
Finished: Yes
Enclosed: Yes
Contiguous: Yes
Permitted: Yes
Wet space: Yes
Addition: No
Conversion: No

71 Cedar Ln, Gunn, New Castle, Craig County, Virginia, United States, 24127

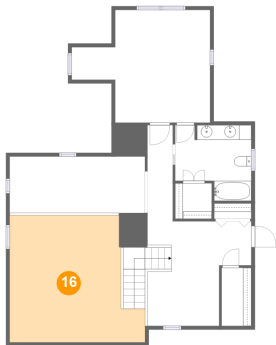
15 Floor 2 - W.I.C.



Max Dimensions: 4'0" x 7'11"
Calculated Area: 12 sq. ft
Included: Yes

Heated: Yes
Finished: Yes
Enclosed: Yes
Contiguous: Yes
Permitted: Yes
Wet space: No
Addition: No
Conversion: No

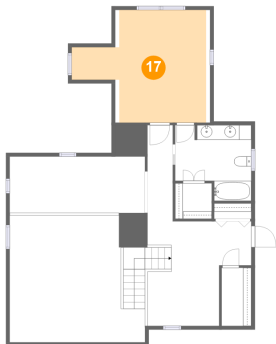
16 Floor 2 - Open To Below



Max Dimensions: 18'4" x 17'2"
Calculated Area: 272 sq. ft
Included: No

Heated: No
Finished: No
Enclosed: No
Contiguous: Yes
Permitted: No
Wet space: No
Addition: No
Conversion: No

17 Floor 2 - Bedroom

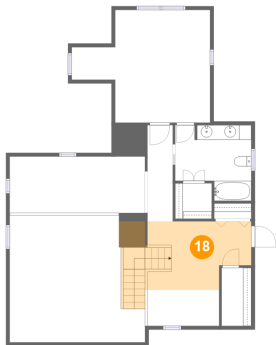


Max Dimensions: 18'8" x 15'3"
Calculated Area: 207 sq. ft
Included: Yes

Heated: Yes
Finished: Yes
Enclosed: Yes
Contiguous: Yes
Permitted: Yes
Wet space: No
Addition: No
Conversion: No

71 Cedar Ln, Gunn, New Castle, Craig County, Virginia, United States, 24127

18 Floor 2 - Sitting Room



Max Dimensions: 14'1" x 14'2"
Calculated Area: 157 sq. ft
Included: Yes

Heated: Yes
Finished: Yes
Enclosed: Yes
Contiguous: Yes
Permitted: Yes
Wet space: No
Addition: No
Conversion: No