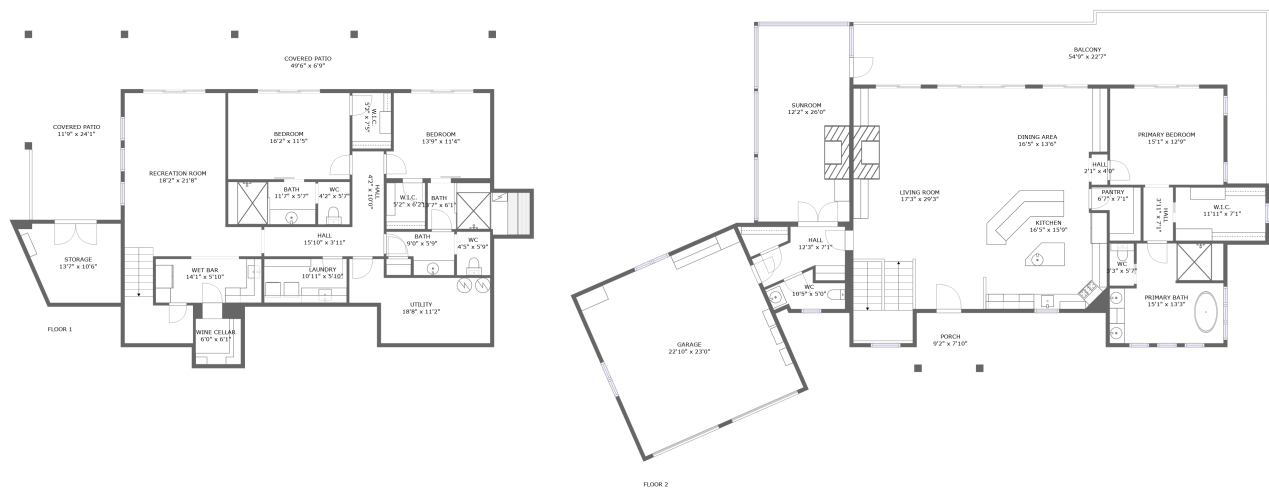


Home report

597 Waterglyn Way, Nebo, McDowell County, North Carolina,  
United States, 28761




**Total Area: 2053 sq. ft**

Below Ground: 1409 sq. ft, Floor 2: 2053 sq. ft

Excluded: Utility 151 sq. ft, Storage 122 sq. ft, Covered patio 619 sq. ft, Garage 527 sq. ft, Balcony 540 sq. ft, Porch 71 sq. ft, Walls: 263 sq. ft

Property summary

 **2** Floors

 **3** Bedrooms

 **3** Bathrooms

Home report

**597 Waterglyn Way, Nebo, McDowell County, North Carolina,  
United States, 28761**



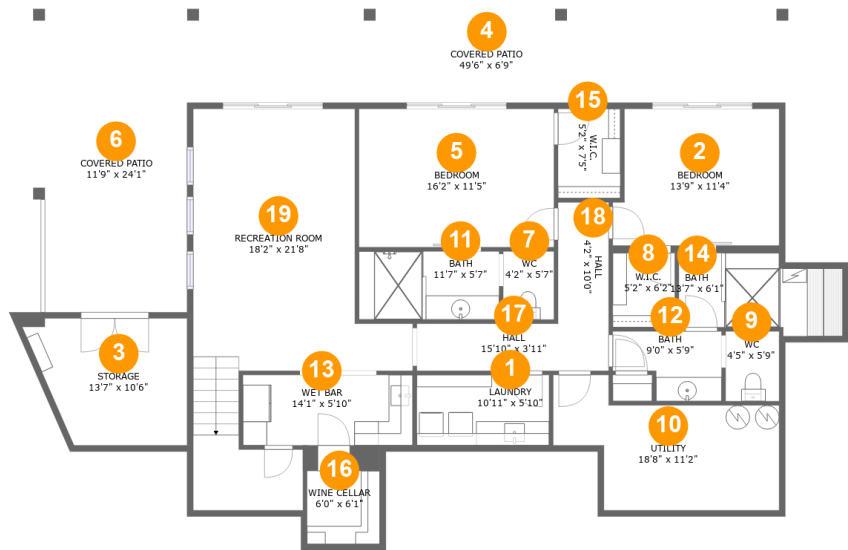
**1**  
Half baths



**1**  
Garages

Home report

597 Waterglyn Way, Nebo, McDowell County, North Carolina,  
United States, 28761



Room dimensions

Floor 1 Below ground Total:1409sqft    Excluded: 892sqft

#		Max Dimensions	sqft	Included
1	Laundry	10'11" x 5'10"	64 sq. ft	Yes
2	Bedroom	13'9" x 11'4"	148 sq. ft	Yes
3	Storage	13'7" x 10'6"	122 sq. ft	No
4	Covered Patio	49'6" x 6'9"	335 sq. ft	No
5	Bedroom	16'2" x 11'5"	185 sq. ft	Yes
6	Covered Patio	11'9" x 24'1"	283 sq. ft	No
7	WC	4'2" x 5'7"	24 sq. ft	Yes
8	W.I.C.	5'2" x 6'2"	32 sq. ft	Yes
9	WC	4'5" x 5'9"	26 sq. ft	Yes
10	Utility	18'8" x 11'2"	151 sq. ft	No
11	Bath	11'7" x 5'7"	65 sq. ft	Yes

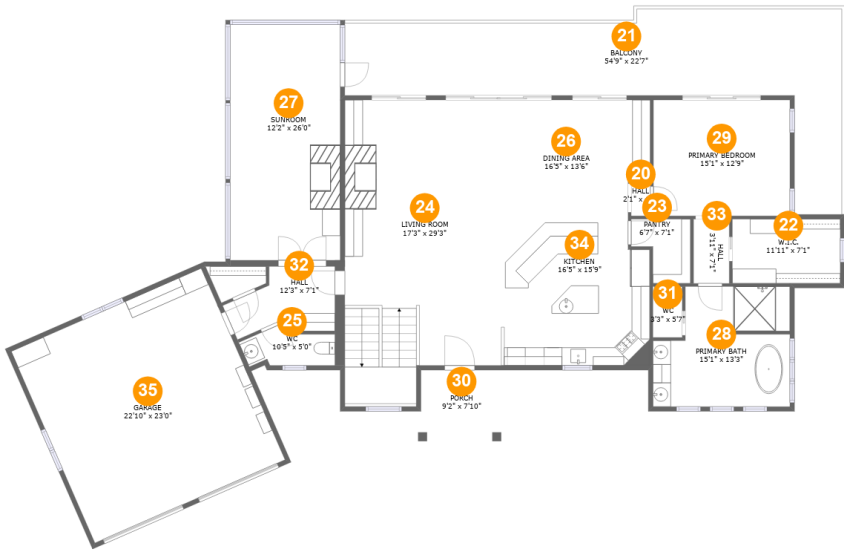
## Home report

**597 Waterglyn Way, Nebo, McDowell County, North Carolina,  
United States, 28761**

#		Max Dimensions	sqft	Included
12	Bath	9'0" x 5'9"	43 sq. ft	Yes
13	Wet Bar	14'1" x 5'10"	82 sq. ft	Yes
14	Bath	13'7" x 6'1"	80 sq. ft	Yes
15	W.I.C.	5'2" x 7'5"	38 sq. ft	Yes
16	Wine Cellar	6'0" x 6'1"	36 sq. ft	Yes
17	Hall	15'10" x 3'11"	62 sq. ft	Yes
18	Hall	4'2" x 10'0"	42 sq. ft	Yes
19	Recreation Room	18'2" x 21'8"	379 sq. ft	Yes

Home report

597 Waterglyn Way, Nebo, McDowell County, North Carolina,  
United States, 28761



Room dimensions

Floor 2Total:2053sqft   Excluded: 1138sqft

#		Max Dimensions	sqft	Included
20	Hall	2'1" x 4'0"	9 sq. ft	Yes
21	Balcony	54'9" x 22'7"	540 sq. ft	No
22	W.I.C.	11'11" x 7'1"	84 sq. ft	Yes
23	Pantry	6'7" x 7'1"	37 sq. ft	Yes
24	Living Room	17'3" x 29'3"	540 sq. ft	Yes
25	WC	10'5" x 5'0"	38 sq. ft	Yes
26	Dining Area	16'5" x 13'6"	210 sq. ft	Yes
27	Sunroom	12'2" x 26'0"	315 sq. ft	Yes
28	Primary Bath	15'1" x 13'3"	177 sq. ft	Yes
29	Primary Bedroom	15'1" x 12'9"	192 sq. ft	Yes
30	Porch	9'2" x 7'10"	71 sq. ft	No

## Home report

**597 Waterglyn Way, Nebo, McDowell County, North Carolina,  
United States, 28761**

#		Max Dimensions	sqft	Included
31	WC	3'3" x 5'7"	18 sq. ft	Yes
32	Hall	12'3" x 7'1"	67 sq. ft	Yes
33	Hall	3'11" x 7'1"	28 sq. ft	Yes
34	Kitchen	16'5" x 15'9"	250 sq. ft	Yes
35	Garage	22'10" x 23'0"	527 sq. ft	No

597 Waterglyn Way, Nebo, McDowell County, North Carolina,  
United States, 28761

1 Floor 1 - Laundry



Max Dimensions: 10'11" x 5'10"  
Calculated Area: 64 sq. ft  
Included: Yes

Heated: Yes  
Finished: Yes  
Enclosed: Yes  
Contiguous: Yes  
Permitted: Yes  
Wet space: No  
Addition: No  
Conversion: No

2 Floor 1 - Bedroom

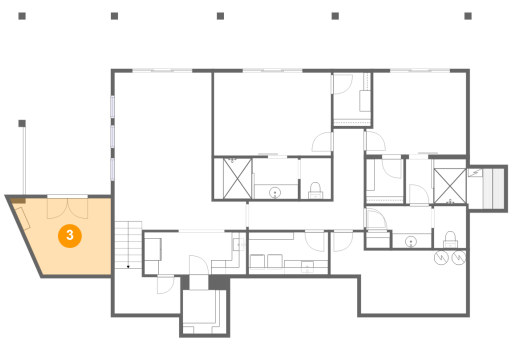


Max Dimensions: 13'9" x 11'4"  
Calculated Area: 148 sq. ft  
Included: Yes

Heated: Yes  
Finished: Yes  
Enclosed: Yes  
Contiguous: Yes  
Permitted: Yes  
Wet space: No  
Addition: No  
Conversion: No

597 Waterglyn Way, Nebo, McDowell County, North Carolina,  
United States, 28761

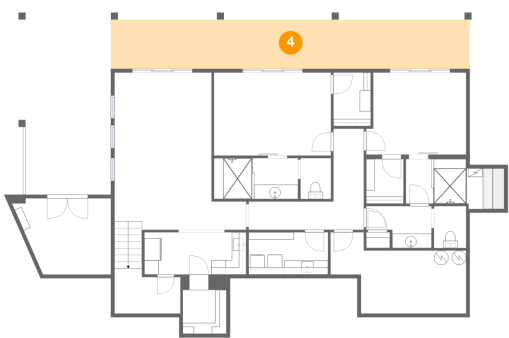
3 Floor 1 - Storage



Max Dimensions: 13'7" x 10'6"  
Calculated Area: 122 sq. ft  
Included: No

Heated: No  
Finished: No  
Enclosed: No  
Contiguous: Yes  
Permitted: Yes  
Wet space: No  
Addition: No  
Conversion: No

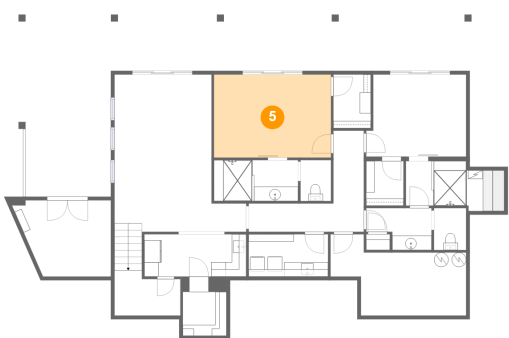
4 Floor 1 - Covered Patio



Max Dimensions: 49'6" x 6'9"  
Calculated Area: 335 sq. ft  
Included: No

Heated: No  
Finished: Yes  
Enclosed: No  
Contiguous: Yes  
Permitted: Yes  
Wet space: No  
Addition: No  
Conversion: No

5 Floor 1 - Bedroom



Max Dimensions: 16'2" x 11'5"  
Calculated Area: 185 sq. ft  
Included: Yes

Heated: Yes  
Finished: Yes  
Enclosed: Yes  
Contiguous: Yes  
Permitted: Yes  
Wet space: No  
Addition: No  
Conversion: No

597 Waterglyn Way, Nebo, McDowell County, North Carolina,  
United States, 28761

6 Floor 1 - Covered Patio



Max Dimensions: 11'9" x 24'1"  
Calculated Area: 283 sq. ft  
Included: No

Heated: No  
Finished: Yes  
Enclosed: No  
Contiguous: Yes  
Permitted: Yes  
Wet space: No  
Addition: No  
Conversion: No

7 Floor 1 - WC



Max Dimensions: 4'2" x 5'7"  
Calculated Area: 24 sq. ft  
Included: Yes

Heated: Yes  
Finished: Yes  
Enclosed: Yes  
Contiguous: Yes  
Permitted: Yes  
Wet space: Yes  
Addition: No  
Conversion: No

8 Floor 1 - W.I.C.



Max Dimensions: 5'2" x 6'2"  
Calculated Area: 32 sq. ft  
Included: Yes

Heated: Yes  
Finished: Yes  
Enclosed: Yes  
Contiguous: Yes  
Permitted: Yes  
Wet space: No  
Addition: No  
Conversion: No

597 Waterglyn Way, Nebo, McDowell County, North Carolina,  
United States, 28761

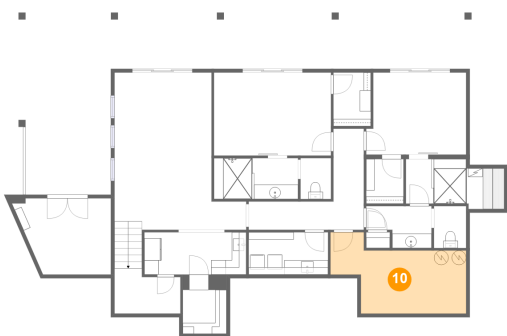
9 Floor 1 - WC



Max Dimensions: 4'5" x 5'9"  
Calculated Area: 26 sq. ft  
Included: Yes

Heated: Yes  
Finished: Yes  
Enclosed: Yes  
Contiguous: Yes  
Permitted: Yes  
Wet space: Yes  
Addition: No  
Conversion: No

10 Floor 1 - Utility



Max Dimensions: 18'8" x 11'2"  
Calculated Area: 151 sq. ft  
Included: No

Heated: Yes  
Finished: No  
Enclosed: Yes  
Contiguous: Yes  
Permitted: Yes  
Wet space: No  
Addition: No  
Conversion: No

11 Floor 1 - Bath

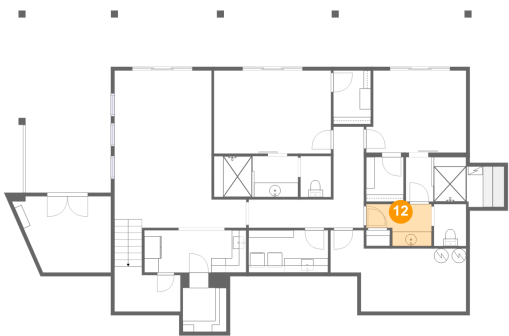


Max Dimensions: 11'7" x 5'7"  
Calculated Area: 65 sq. ft  
Included: Yes

Heated: Yes  
Finished: Yes  
Enclosed: Yes  
Contiguous: Yes  
Permitted: Yes  
Wet space: Yes  
Addition: No  
Conversion: No

597 Waterglyn Way, Nebo, McDowell County, North Carolina,  
United States, 28761

12 Floor 1 - Bath



Max Dimensions: 9'0" x 5'9"  
Calculated Area: 43 sq. ft  
Included: Yes

Heated: Yes  
Finished: Yes  
Enclosed: Yes  
Contiguous: Yes  
Permitted: Yes  
Wet space: Yes  
Addition: No  
Conversion: No

13 Floor 1 - Wet Bar



Max Dimensions: 14'1" x 5'10"  
Calculated Area: 82 sq. ft  
Included: Yes

Heated: Yes  
Finished: Yes  
Enclosed: Yes  
Contiguous: Yes  
Permitted: Yes  
Wet space: No  
Addition: No  
Conversion: No

14 Floor 1 - Bath



Max Dimensions: 13'7" x 6'1"  
Calculated Area: 80 sq. ft  
Included: Yes

Heated: Yes  
Finished: Yes  
Enclosed: Yes  
Contiguous: Yes  
Permitted: Yes  
Wet space: Yes  
Addition: No  
Conversion: No

597 Waterglyn Way, Nebo, McDowell County, North Carolina,  
United States, 28761

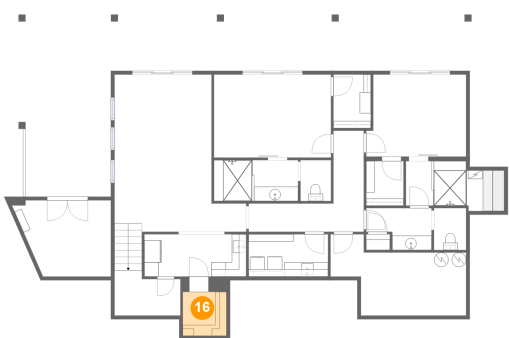
15 Floor 1 - W.I.C.



Max Dimensions: 5'2" x 7'5"  
Calculated Area: 38 sq. ft  
Included: Yes

Heated: Yes  
Finished: Yes  
Enclosed: Yes  
Contiguous: Yes  
Permitted: Yes  
Wet space: No  
Addition: No  
Conversion: No

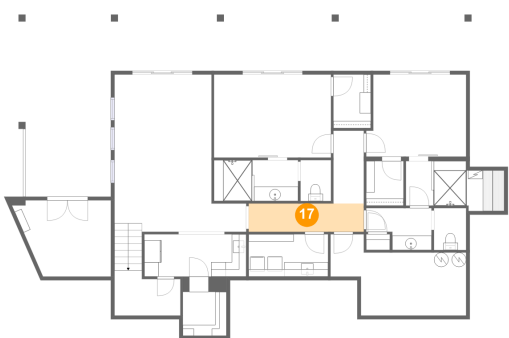
16 Floor 1 - Wine Cellar



Max Dimensions: 6'0" x 6'1"  
Calculated Area: 36 sq. ft  
Included: No

Heated: No  
Finished: Yes  
Enclosed: Yes  
Contiguous: Yes  
Permitted: Yes  
Wet space: No  
Addition: No  
Conversion: No

17 Floor 1 - Hall

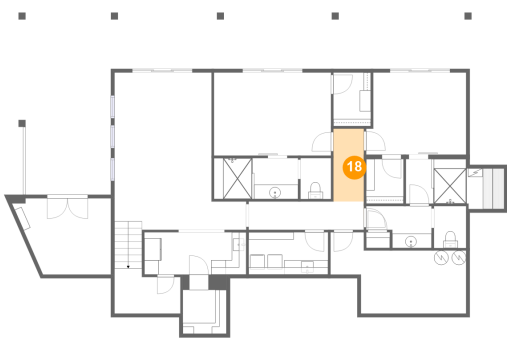


Max Dimensions: 15'10" x 3'11"  
Calculated Area: 62 sq. ft  
Included: Yes

Heated: Yes  
Finished: Yes  
Enclosed: Yes  
Contiguous: Yes  
Permitted: Yes  
Wet space: No  
Addition: No  
Conversion: No

597 Waterglyn Way, Nebo, McDowell County, North Carolina,  
United States, 28761

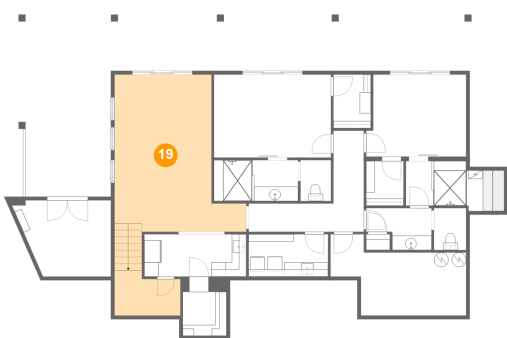
18 Floor 1 - Hall



Max Dimensions: 4'2" x 10'0"  
Calculated Area: 42 sq. ft  
Included: Yes

Heated: Yes  
Finished: Yes  
Enclosed: Yes  
Contiguous: Yes  
Permitted: Yes  
Wet space: No  
Addition: No  
Conversion: No

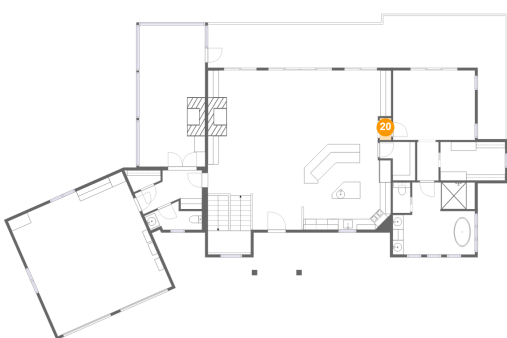
19 Floor 1 - Recreation Room



Max Dimensions: 18'2" x 21'8"  
Calculated Area: 379 sq. ft  
Included: Yes

Heated: Yes  
Finished: Yes  
Enclosed: Yes  
Contiguous: Yes  
Permitted: Yes  
Wet space: No  
Addition: No  
Conversion: No

20 Floor 2 - Hall

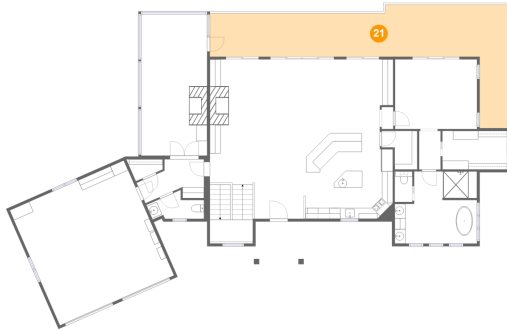


Max Dimensions: 2'1" x 4'0"  
Calculated Area: 9 sq. ft  
Included: Yes

Heated: Yes  
Finished: Yes  
Enclosed: Yes  
Contiguous: Yes  
Permitted: Yes  
Wet space: No  
Addition: No  
Conversion: No

597 Waterglyn Way, Nebo, McDowell County, North Carolina,  
United States, 28761

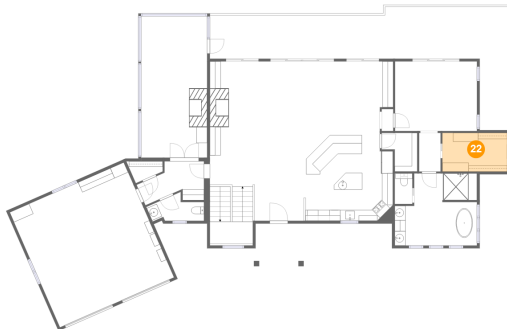
## 21 Floor 2 - Balcony



Max Dimensions: 54'9" x 22'7"  
Calculated Area: 540 sq. ft  
Included: No

Heated: No  
Finished: Yes  
Enclosed: No  
Contiguous: Yes  
Permitted: Yes  
Wet space: No  
Addition: No  
Conversion: No

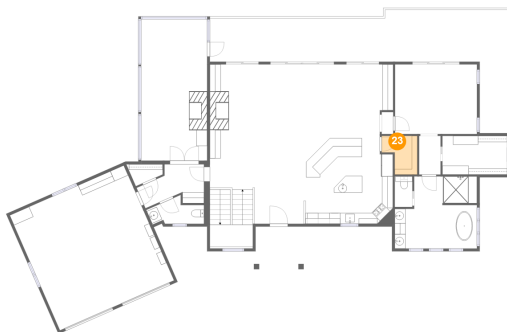
## 22 Floor 2 - W.I.C.



Max Dimensions: 11'11" x 7'1"  
Calculated Area: 84 sq. ft  
Included: Yes

Heated: Yes  
Finished: Yes  
Enclosed: Yes  
Contiguous: Yes  
Permitted: Yes  
Wet space: No  
Addition: No  
Conversion: No

## 23 Floor 2 - Pantry

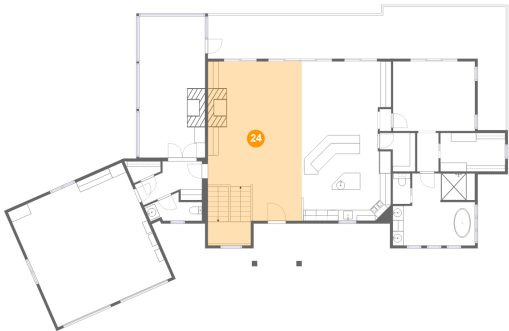


Max Dimensions: 6'7" x 7'1"  
Calculated Area: 37 sq. ft  
Included: Yes

Heated: Yes  
Finished: Yes  
Enclosed: Yes  
Contiguous: Yes  
Permitted: Yes  
Wet space: No  
Addition: No  
Conversion: No

597 Waterglyn Way, Nebo, McDowell County, North Carolina,  
United States, 28761

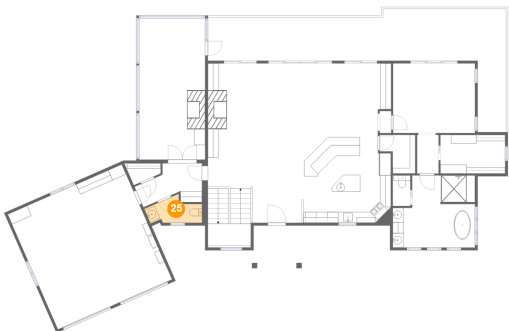
24 Floor 2 - Living Room



Max Dimensions: 17'3" x 29'3"  
Calculated Area: 540 sq. ft  
Included: Yes

Heated: Yes  
Finished: Yes  
Enclosed: Yes  
Contiguous: Yes  
Permitted: Yes  
Wet space: No  
Addition: No  
Conversion: No

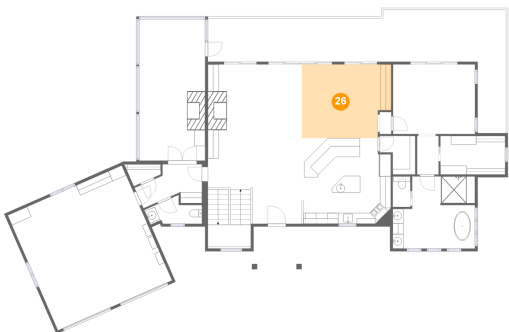
25 Floor 2 - WC



Max Dimensions: 10'5" x 5'0"  
Calculated Area: 38 sq. ft  
Included: Yes

Heated: Yes  
Finished: Yes  
Enclosed: Yes  
Contiguous: Yes  
Permitted: Yes  
Wet space: Yes  
Addition: No  
Conversion: No

26 Floor 2 - Dining Area

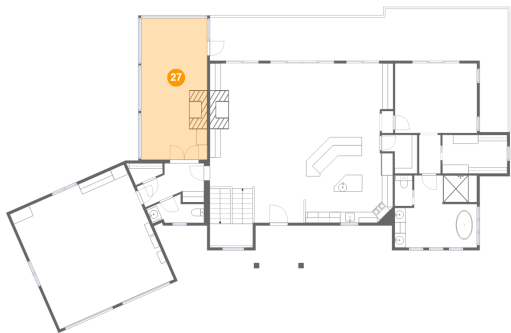


Max Dimensions: 16'5" x 13'6"  
Calculated Area: 210 sq. ft  
Included: Yes

Heated: Yes  
Finished: Yes  
Enclosed: Yes  
Contiguous: Yes  
Permitted: Yes  
Wet space: No  
Addition: No  
Conversion: No

597 Waterglyn Way, Nebo, McDowell County, North Carolina,  
United States, 28761

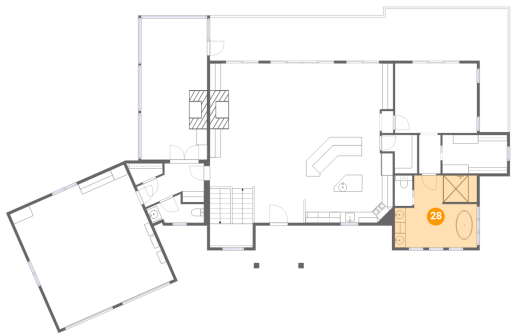
27 Floor 2 - Sunroom



Max Dimensions: 12'2" x 26'0"  
Calculated Area: 315 sq. ft  
Included: Yes

Heated: Yes  
Finished: Yes  
Enclosed: Yes  
Contiguous: Yes  
Permitted: Yes  
Wet space: No  
Addition: No  
Conversion: No

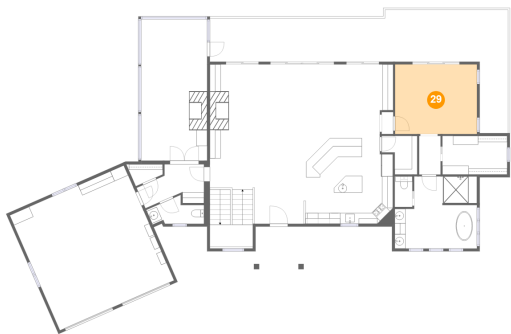
28 Floor 2 - Primary Bath



Max Dimensions: 15'1" x 13'3"  
Calculated Area: 177 sq. ft  
Included: Yes

Heated: Yes  
Finished: Yes  
Enclosed: Yes  
Contiguous: Yes  
Permitted: Yes  
Wet space: Yes  
Addition: No  
Conversion: No

29 Floor 2 - Primary Bedroom

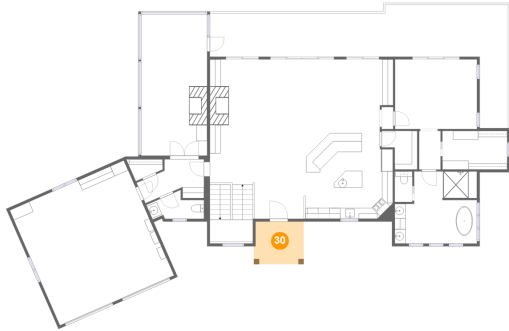


Max Dimensions: 15'1" x 12'9"  
Calculated Area: 192 sq. ft  
Included: Yes

Heated: Yes  
Finished: Yes  
Enclosed: Yes  
Contiguous: Yes  
Permitted: Yes  
Wet space: No  
Addition: No  
Conversion: No

597 Waterglyn Way, Nebo, McDowell County, North Carolina,  
United States, 28761

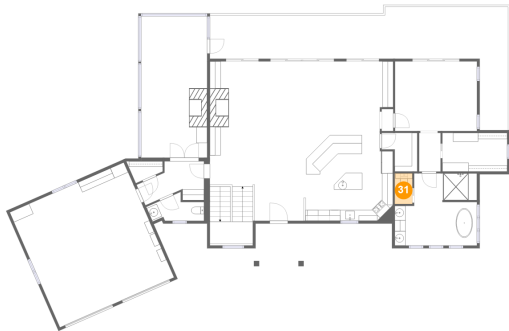
### 30 Floor 2 - Porch



Max Dimensions: 9'2" x 7'10"  
Calculated Area: 71 sq. ft  
Included: No

Heated: No  
Finished: Yes  
Enclosed: No  
Contiguous: Yes  
Permitted: Yes  
Wet space: No  
Addition: No  
Conversion: No

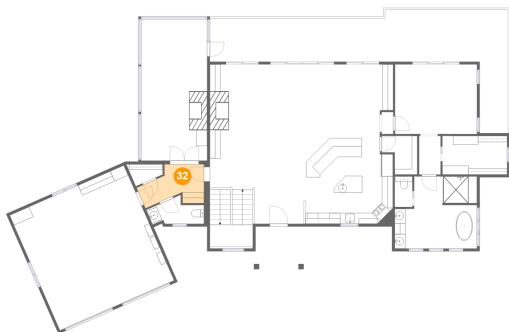
### 31 Floor 2 - WC



Max Dimensions: 3'3" x 5'7"  
Calculated Area: 18 sq. ft  
Included: Yes

Heated: Yes  
Finished: Yes  
Enclosed: Yes  
Contiguous: Yes  
Permitted: Yes  
Wet space: Yes  
Addition: No  
Conversion: No

### 32 Floor 2 - Hall

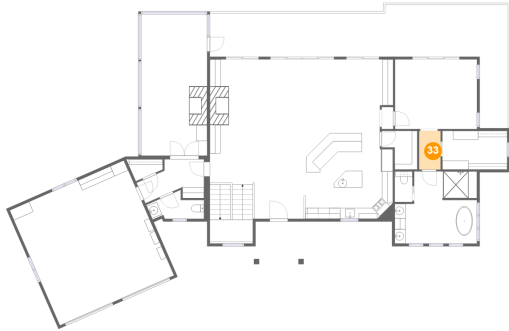


Max Dimensions: 12'3" x 7'1"  
Calculated Area: 67 sq. ft  
Included: Yes

Heated: Yes  
Finished: Yes  
Enclosed: Yes  
Contiguous: Yes  
Permitted: Yes  
Wet space: No  
Addition: No  
Conversion: No

597 Waterglyn Way, Nebo, McDowell County, North Carolina,  
United States, 28761

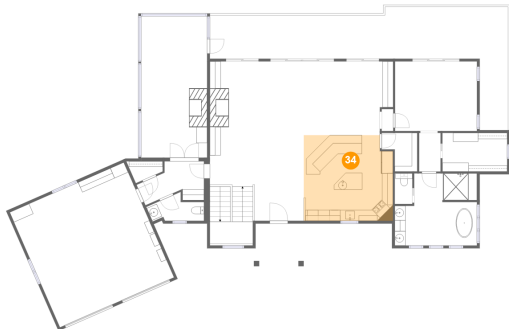
### 33 Floor 2 - Hall



Max Dimensions: 3'11" x 7'1"  
Calculated Area: 28 sq. ft  
Included: Yes

Heated: Yes  
Finished: Yes  
Enclosed: Yes  
Contiguous: Yes  
Permitted: Yes  
Wet space: No  
Addition: No  
Conversion: No

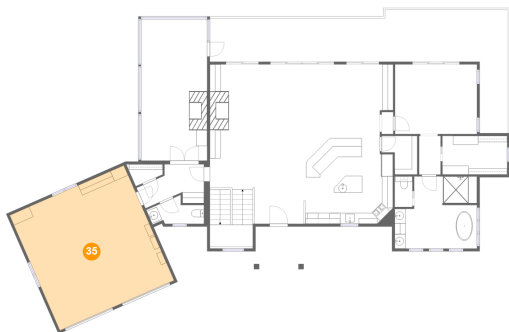
### 34 Floor 2 - Kitchen



Max Dimensions: 16'5" x 15'9"  
Calculated Area: 250 sq. ft  
Included: Yes

Heated: Yes  
Finished: Yes  
Enclosed: Yes  
Contiguous: Yes  
Permitted: Yes  
Wet space: No  
Addition: No  
Conversion: No

### 35 Floor 2 - Garage



Max Dimensions: 22'10" x 23'0"  
Calculated Area: 527 sq. ft  
Included: No

Heated: No  
Finished: No  
Enclosed: Yes  
Contiguous: Yes  
Permitted: Yes  
Wet space: No  
Addition: No  
Conversion: No