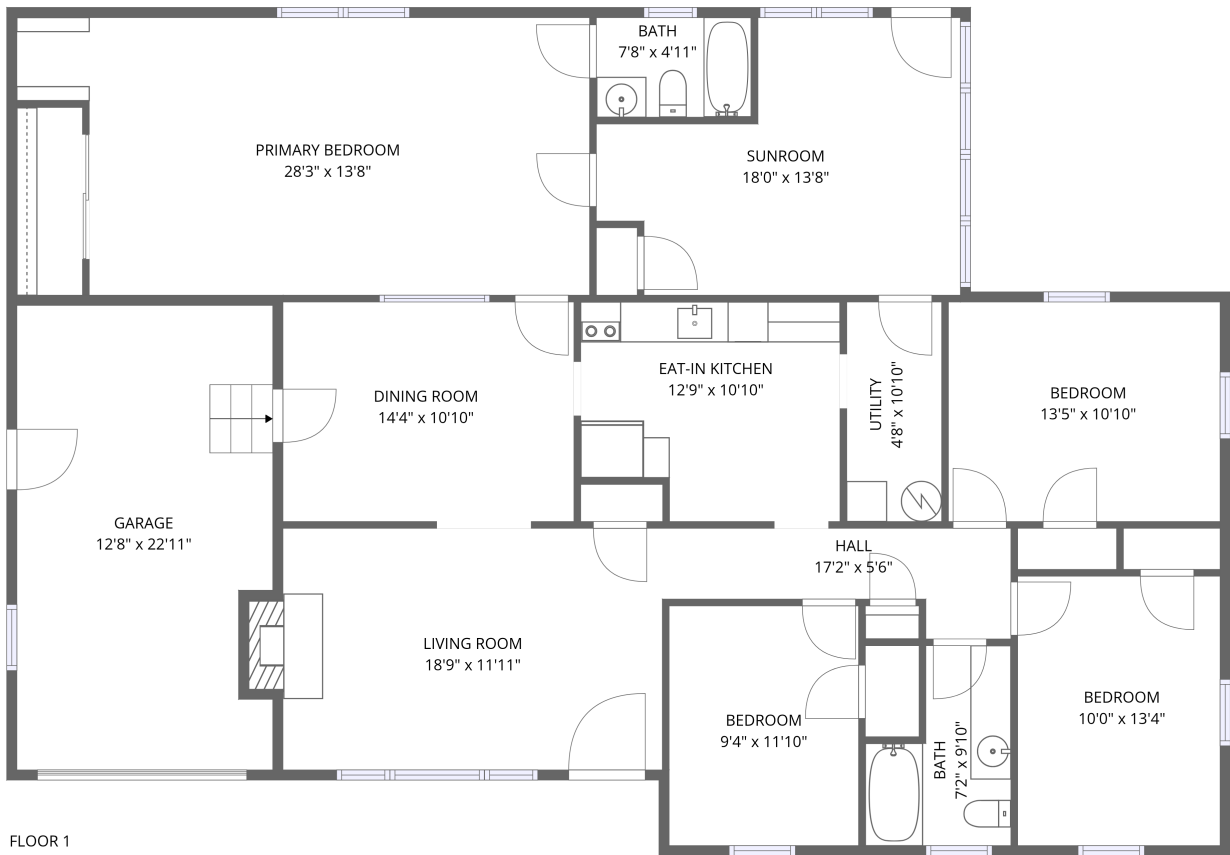


Home report

9 Nutmeg Quarter Pl,Newport News,VA,US




Total Area: 1825 sq. ft

Floor 1: 1825 sq. ft

Excluded: Garage 280 sq. ft, Walls: 121 sq. ft

Property summary

 **1** Floors

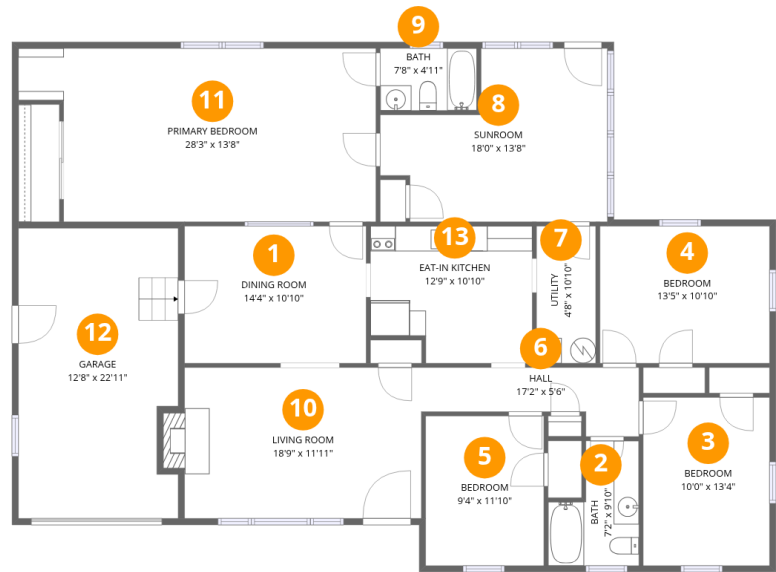
 **4** Bedrooms

 **2** Bathrooms

 **1** Garages

Home report

9 Nutmeg Quarter Pl,Newport News,VA,US



Room dimensions

Floor 1

Total:1825sqft

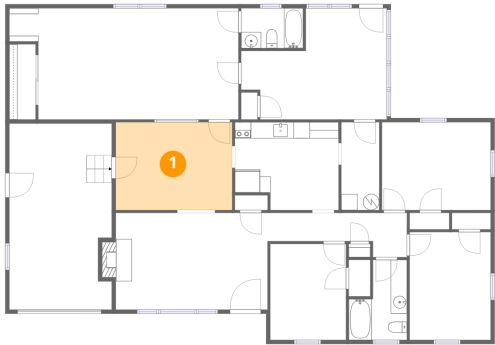
Excluded: 280sqft

#		Max Dimensions	sqft	Included
1	Dining Room	14'4" x 10'10"	156 sq. ft	Yes
2	Bath	7'2" x 9'10"	56 sq. ft	Yes
3	Bedroom	10'0" x 13'4"	133 sq. ft	Yes
4	Bedroom	13'5" x 10'10"	145 sq. ft	Yes
5	Bedroom	9'4" x 11'10"	111 sq. ft	Yes
6	Hall	17'2" x 5'6"	68 sq. ft	Yes
7	Utility	4'8" x 10'10"	51 sq. ft	Yes
8	Sunroom	18'0" x 13'8"	196 sq. ft	Yes
9	Bath	7'8" x 4'11"	38 sq. ft	Yes
10	Living Room	18'9" x 11'11"	231 sq. ft	Yes
11	Primary Bedroom	28'3" x 13'8"	353 sq. ft	Yes

9 Nutmeg Quarter Pl,Newport News,VA,US

#		Max Dimensions	sqft	Included
12	Garage	12'8" x 22'11"	280 sq. ft	No
13	Eat-in Kitchen	12'9" x 10'10"	129 sq. ft	Yes

1 Floor 1 - Dining Room



Max Dimensions: 14'4" x 10'10"
Calculated Area: 156 sq. ft
Included: Yes

Heated: Yes
Finished: Yes
Enclosed: Yes
Contiguous: Yes
Permitted: Yes
Wet space: No
Addition: No
Conversion: No

2 Floor 1 - Bath



Max Dimensions: 7'2" x 9'10"
Calculated Area: 56 sq. ft
Included: Yes

Heated: Yes
Finished: Yes
Enclosed: Yes
Contiguous: Yes
Permitted: Yes
Wet space: Yes
Addition: No
Conversion: No

3 Floor 1 - Bedroom



Max Dimensions: 10'0" x 13'4"
Calculated Area: 133 sq. ft
Included: Yes

Heated: Yes
Finished: Yes
Enclosed: Yes
Contiguous: Yes
Permitted: Yes
Wet space: No
Addition: No
Conversion: No

4 Floor 1 - Bedroom



Max Dimensions: 13'5" x 10'10"
Calculated Area: 145 sq. ft
Included: Yes

Heated: Yes
Finished: Yes
Enclosed: Yes
Contiguous: Yes
Permitted: Yes
Wet space: No
Addition: No
Conversion: No

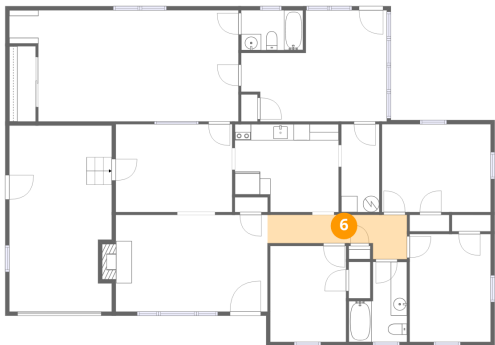
5 Floor 1 - Bedroom



Max Dimensions: 9'4" x 11'10"
Calculated Area: 111 sq. ft
Included: Yes

Heated: Yes
Finished: Yes
Enclosed: Yes
Contiguous: Yes
Permitted: Yes
Wet space: No
Addition: No
Conversion: No

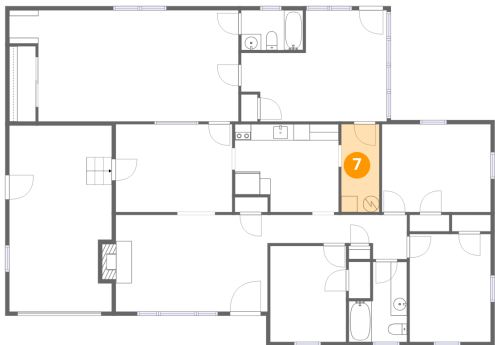
6 Floor 1 - Hall



Max Dimensions: 17'2" x 5'6"
Calculated Area: 68 sq. ft
Included: Yes

Heated: Yes
Finished: Yes
Enclosed: Yes
Contiguous: Yes
Permitted: Yes
Wet space: No
Addition: No
Conversion: No

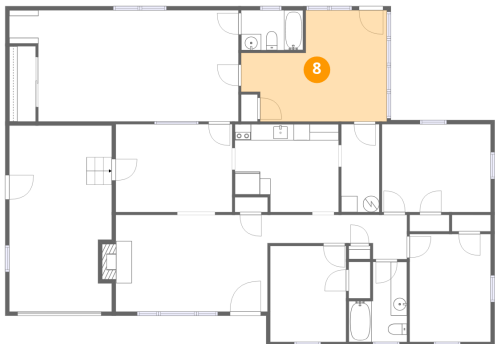
7 Floor 1 - Utility



Max Dimensions: 4'8" x 10'10"
Calculated Area: 51 sq. ft
Included: Yes

Heated: Yes
Finished: Yes
Enclosed: Yes
Contiguous: Yes
Permitted: Yes
Wet space: No
Addition: No
Conversion: No

8 Floor 1 - Sunroom

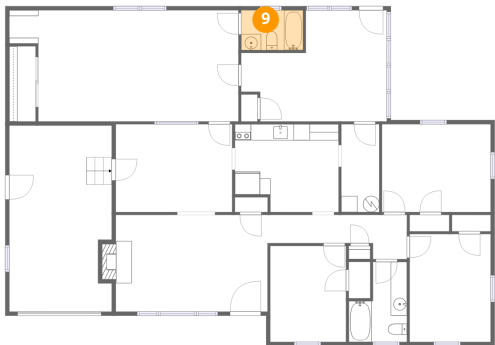


Max Dimensions: 18'0" x 13'8"
Calculated Area: 196 sq. ft
Included: Yes

Heated: Yes
Finished: Yes
Enclosed: Yes
Contiguous: Yes
Permitted: Yes
Wet space: No
Addition: No
Conversion: No

9 Nutmeg Quarter Pl,Newport News,VA,US

9 Floor 1 - Bath



Max Dimensions: 7'8" x 4'11"
Calculated Area: 38 sq. ft
Included: Yes

Heated: Yes
Finished: Yes
Enclosed: Yes
Contiguous: Yes
Permitted: Yes
Wet space: Yes
Addition: No
Conversion: No

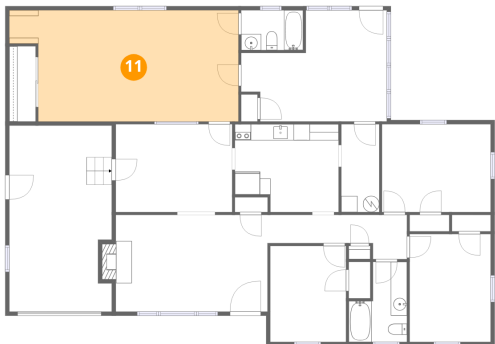
10 Floor 1 - Living Room



Max Dimensions: 18'9" x 11'11"
Calculated Area: 231 sq. ft
Included: Yes

Heated: Yes
Finished: Yes
Enclosed: Yes
Contiguous: Yes
Permitted: Yes
Wet space: No
Addition: No
Conversion: No

11 Floor 1 - Primary Bedroom



Max Dimensions: 28'3" x 13'8"
Calculated Area: 353 sq. ft
Included: Yes

Heated: Yes
Finished: Yes
Enclosed: Yes
Contiguous: Yes
Permitted: Yes
Wet space: No
Addition: No
Conversion: No

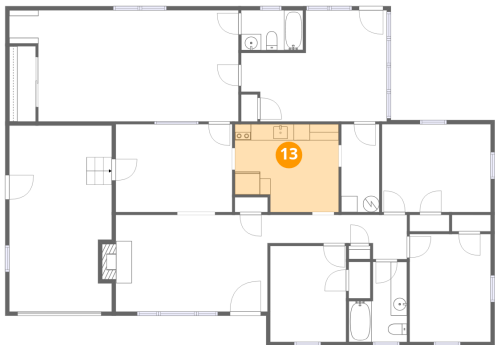
12 Floor 1 - Garage



Max Dimensions: 12'8" x 22'11"
Calculated Area: 280 sq. ft
Included: No

Heated: No
Finished: No
Enclosed: Yes
Contiguous: Yes
Permitted: Yes
Wet space: No
Addition: No
Conversion: No

13 Floor 1 - Eat-in Kitchen



Max Dimensions: 12'9" x 10'10"
Calculated Area: 129 sq. ft
Included: Yes

Heated: Yes
Finished: Yes
Enclosed: Yes
Contiguous: Yes
Permitted: Yes
Wet space: No
Addition: No
Conversion: No