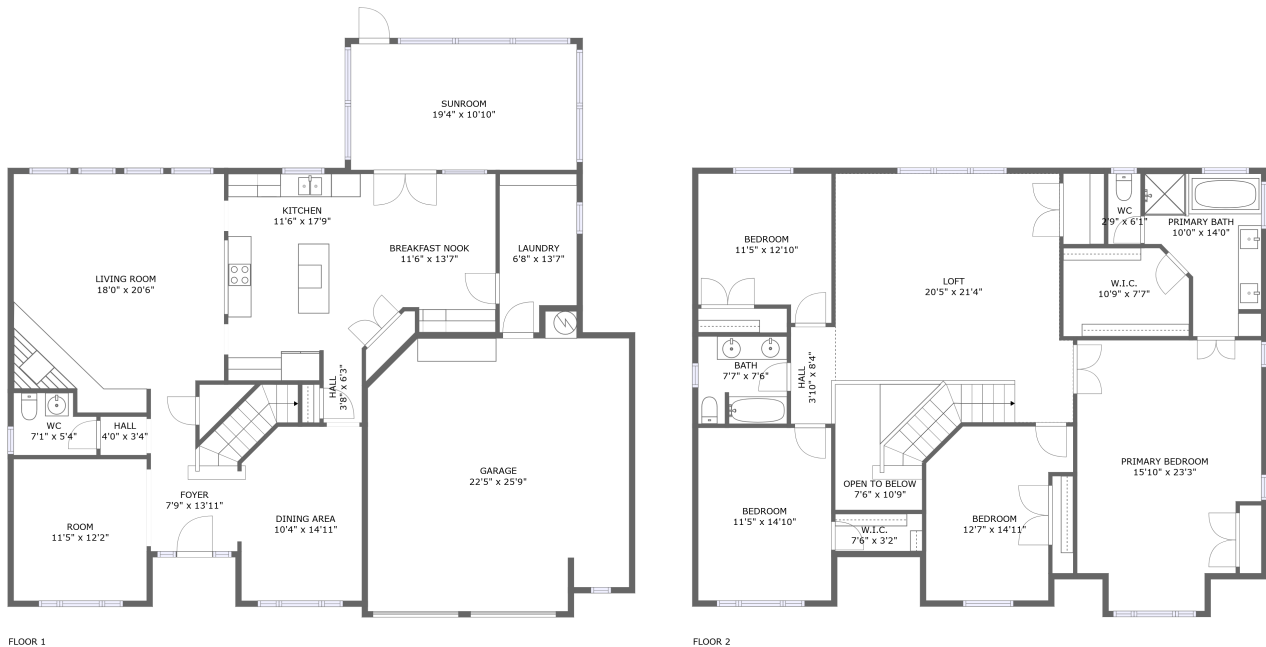


Home Data Report

524 Faulkner Drive, Schertz, Guadalupe County, Texas, United States, 78154




Property Summary


 **1** garages

 **4** bedrooms

 **2** bathrooms

 **1** half baths

 **2** floors

 **3115** Gross Living Area sqft

 **3,983** total sqft

Home Data Report

**524 Faulkner Drive, Schertz, Guadalupe County,
Texas, United States, 78154**



Room Dimensions

Floor 1

Total sqft: 2170

Living area: 1631

#	Room name	Dimensions	Area (sqft)	Counted as Living Area
1	Living Room	18'0" x 20'6"	344 sq. ft	Yes
2	Hall	4'0" x 3'4"	13 sq. ft	Yes
3	Laundry	6'8" x 13'7"	83 sq. ft	Yes
4	Dining Area	10'4" x 14'11"	150 sq. ft	Yes
5	Hall	3'8" x 6'3"	21 sq. ft	Yes
6	Kitchen	11'6" x 17'9"	197 sq. ft	Yes
7	Room	11'5" x 12'2"	139 sq. ft	Yes
8	Breakfast Nook	11'6" x 13'7"	152 sq. ft	Yes
9	Foyer	7'9" x 13'11"	113 sq. ft	Yes
10	Garage	22'5" x 25'9"	511 sq. ft	No
11	Wc	7'1" x 5'4"	34 sq. ft	Yes

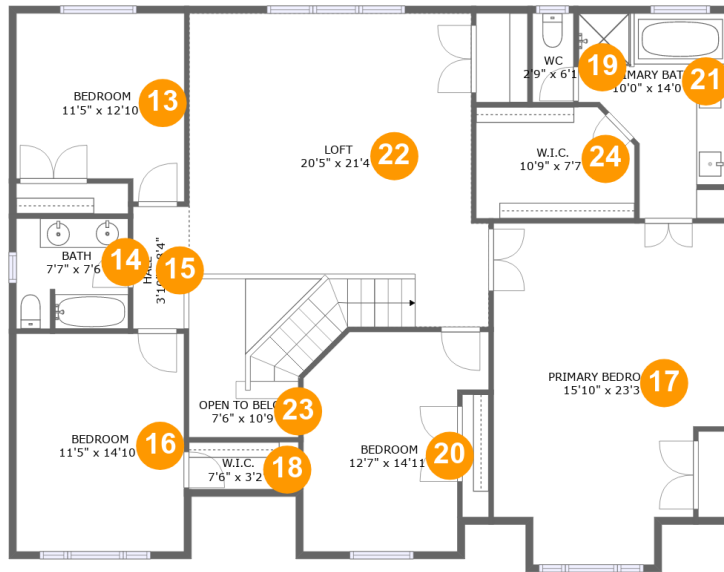
Home Data Report

**524 Faulkner Drive, Schertz, Guadalupe County,
Texas, United States, 78154**

#	Room name	Dimensions	Area (sqft)	Counted as Living Area
12	Sunroom	19'4" x 10'10"	210 sq. ft	No

Home Data Report

**524 Faulkner Drive, Schertz, Guadalupe County,
Texas, United States, 78154**



Room Dimensions

Floor 2

Total sqft: 1813

Living area: 1750

#	Room name	Dimensions	Area (sqft)	Counted as Living Area
13	Bedroom	11'5" x 12'10"	134 sq. ft	Yes
14	Bath	7'7" x 7'6"	56 sq. ft	Yes
15	Hall	3'10" x 8'4"	32 sq. ft	Yes
16	Bedroom	11'5" x 14'10"	169 sq. ft	Yes
17	Primary Bedroom	15'10" x 23'3"	330 sq. ft	Yes
18	W.i.c.	7'6" x 3'2"	24 sq. ft	Yes
19	Wc	2'9" x 6'1"	17 sq. ft	Yes
20	Bedroom	12'7" x 14'11"	160 sq. ft	Yes
21	Primary Bath	10'0" x 14'0"	110 sq. ft	Yes
22	Loft	20'5" x 21'4"	417 sq. ft	Yes
23	Open To Below	7'6" x 10'9"	64 sq. ft	No

Scan captured on Tue, 18 Jun 2024 19:06:18 GMT

Information is deemed highly reliable but not guaranteed.

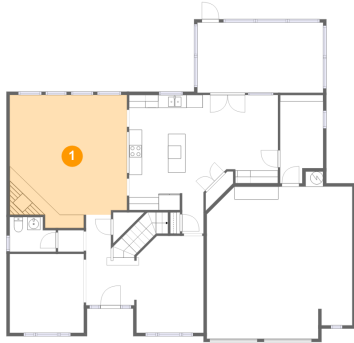
Home Data Report

**524 Faulkner Drive, Schertz, Guadalupe County,
Texas, United States, 78154**

#	Room name	Dimensions	Area (sqft)	Counted as Living Area
24	W.i.c.	10'9" x 7'7"	78 sq. ft	Yes

**524 Faulkner Drive, Schertz, Guadalupe County,
Texas, United States, 78154**

1 Floor 1 - Living Room



Dimensions: 18'0" x 20'6"
Area: 344 sq. ft
Counted as Living Area:
Yes

Heated: Yes
Finished: Yes
Enclosed: Yes
Contiguous:
Yes
Permitted: Yes
Wet Space: No
Addition: No
Conversion: No

2 Floor 1 - Hall



Dimensions: 4'0" x 3'4"
Area: 13 sq. ft
Counted as Living Area:
Yes

Heated: Yes
Finished: Yes
Enclosed: Yes
Contiguous:
Yes
Permitted: Yes
Wet Space: No
Addition: No
Conversion: No

**524 Faulkner Drive, Schertz, Guadalupe County,
Texas, United States, 78154**

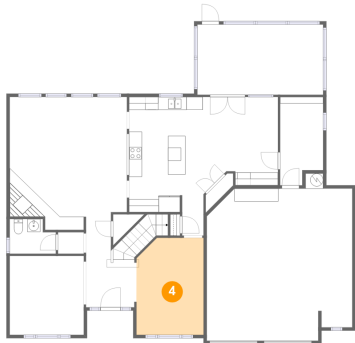
3 Floor 1 - Laundry



Dimensions: 6'8" x 13'7"
Area: 83 sq. ft
Counted as Living Area:
Yes

Heated: Yes
Finished: Yes
Enclosed: Yes
Contiguous:
Yes
Permitted: Yes
Wet Space: No
Addition: No
Conversion: No

4 Floor 1 - Dining Area



Dimensions: 10'4" x 14'11"
Area: 150 sq. ft
Counted as Living Area:
Yes

Heated: Yes
Finished: Yes
Enclosed: Yes
Contiguous:
Yes
Permitted: Yes
Wet Space: No
Addition: No
Conversion: No

5 Floor 1 - Hall

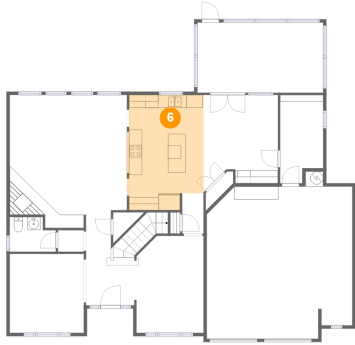


Dimensions: 3'8" x 6'3"
Area: 21 sq. ft
Counted as Living Area:
Yes

Heated: Yes
Finished: Yes
Enclosed: Yes
Contiguous:
Yes
Permitted: Yes
Wet Space: No
Addition: No
Conversion: No

**524 Faulkner Drive, Schertz, Guadalupe County,
Texas, United States, 78154**

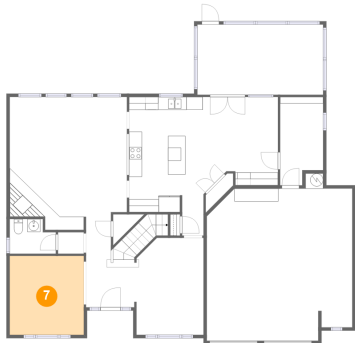
6 Floor 1 - Kitchen



Dimensions: 11'6" x 17'9"
Area: 197 sq. ft
Counted as Living Area:
Yes

Heated: Yes
Finished: Yes
Enclosed: Yes
Contiguous:
Yes
Permitted: Yes
Wet Space: No
Addition: No
Conversion: No

7 Floor 1 - Room



Dimensions: 11'5" x 12'2"
Area: 139 sq. ft
Counted as Living Area:
Yes

Heated: Yes
Finished: Yes
Enclosed: Yes
Contiguous:
Yes
Permitted: Yes
Wet Space: No
Addition: No
Conversion: No

8 Floor 1 - Breakfast Nook

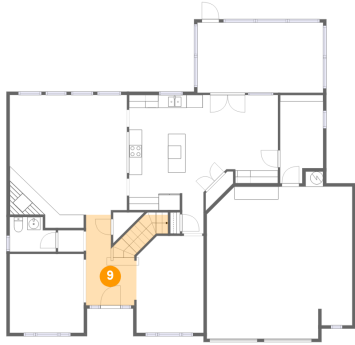


Dimensions: 11'6" x 13'7"
Area: 152 sq. ft
Counted as Living Area:
Yes

Heated: Yes
Finished: Yes
Enclosed: Yes
Contiguous:
Yes
Permitted: Yes
Wet Space: No
Addition: No
Conversion: No

**524 Faulkner Drive, Schertz, Guadalupe County,
Texas, United States, 78154**

9 Floor 1 - Foyer



Dimensions: 7'9" x 13'11"
Area: 113 sq. ft
Counted as Living Area:
Yes

Heated: Yes
Finished: Yes
Enclosed: Yes
Contiguous:
Yes
Permitted: Yes
Wet Space: No
Addition: No
Conversion: No

10 Floor 1 - Garage



Dimensions: 22'5" x 25'9"
Area: 511 sq. ft
Counted as Living Area: No

Heated: No
Finished: No
Enclosed: Yes
Contiguous: Yes
Permitted: Yes
Wet Space: No
Addition: No
Conversion: No

11 Floor 1 - Wc

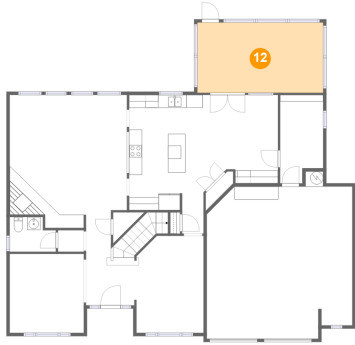


Dimensions: 7'1" x 5'4"
Area: 34 sq. ft
Counted as Living Area:
Yes

Heated: Yes
Finished: Yes
Enclosed: Yes
Contiguous:
Yes
Permitted: Yes
Wet Space: Yes
Addition: No
Conversion: No

**524 Faulkner Drive, Schertz, Guadalupe County,
Texas, United States, 78154**

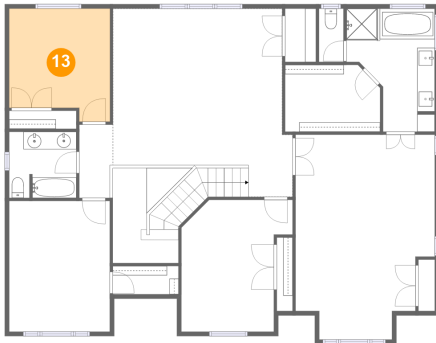
12 Floor 1 - Sunroom



Dimensions: 19'4" x 10'10"
Area: 210 sq. ft
Counted as Living Area:
Yes

Heated: Yes
Finished: Yes
Enclosed: Yes
Contiguous:
Yes
Permitted: Yes
Wet Space: No
Addition: No
Conversion: No

13 Floor 2 - Bedroom



Dimensions: 11'5" x 12'10"
Area: 134 sq. ft
Counted as Living Area:
Yes

Heated: Yes
Finished: Yes
Enclosed: Yes
Contiguous:
Yes
Permitted: Yes
Wet Space: No
Addition: No
Conversion: No

14 Floor 2 - Bath

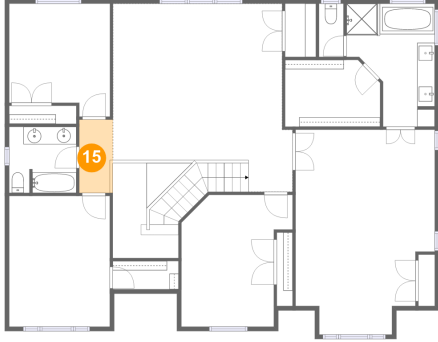


Dimensions: 7'7" x 7'6"
Area: 56 sq. ft
Counted as Living Area:
Yes

Heated: Yes
Finished: Yes
Enclosed: Yes
Contiguous:
Yes
Permitted: Yes
Wet Space: Yes
Addition: No
Conversion: No

**524 Faulkner Drive, Schertz, Guadalupe County,
Texas, United States, 78154**

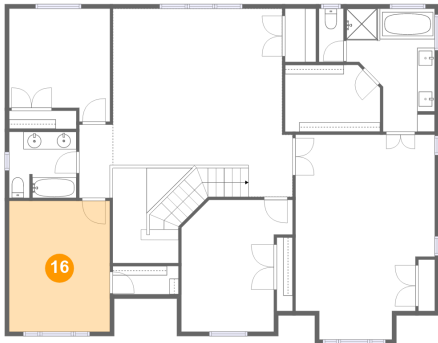
15 Floor 2 - Hall



Dimensions: 3'10" x 8'4"
Area: 32 sq. ft
Counted as Living Area:
Yes

Heated: Yes
Finished: Yes
Enclosed: Yes
Contiguous:
Yes
Permitted: Yes
Wet Space: No
Addition: No
Conversion: No

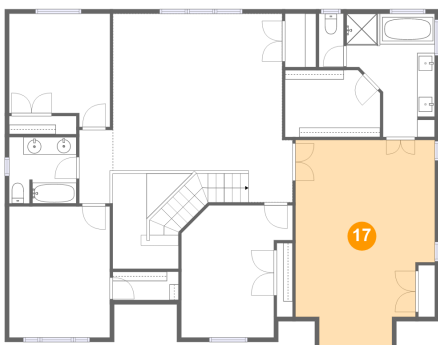
16 Floor 2 - Bedroom



Dimensions: 11'5" x 14'10"
Area: 169 sq. ft
Counted as Living Area:
Yes

Heated: Yes
Finished: Yes
Enclosed: Yes
Contiguous:
Yes
Permitted: Yes
Wet Space: No
Addition: No
Conversion: No

17 Floor 2 - Primary Bedroom

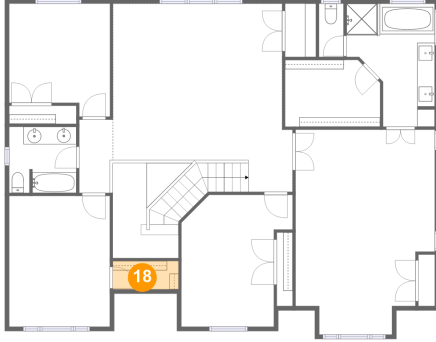


Dimensions: 15'10" x 23'3"
Area: 330 sq. ft
Counted as Living Area:
Yes

Heated: Yes
Finished: Yes
Enclosed: Yes
Contiguous:
Yes
Permitted: Yes
Wet Space: No
Addition: No
Conversion: No

**524 Faulkner Drive, Schertz, Guadalupe County,
Texas, United States, 78154**

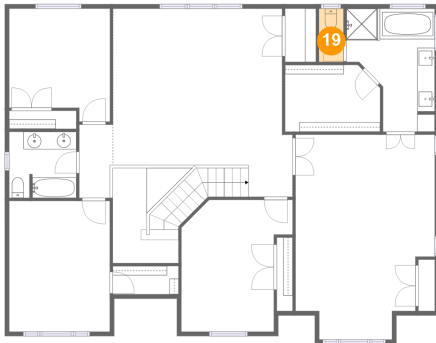
18 Floor 2 - W.i.c.



Dimensions: 7'6" x 3'2"
Area: 24 sq. ft
Counted as Living Area:
Yes

Heated: Yes
Finished: Yes
Enclosed: Yes
Contiguous:
Yes
Permitted: Yes
Wet Space: No
Addition: No
Conversion: No

19 Floor 2 - Wc



Dimensions: 2'9" x 6'1"
Area: 17 sq. ft
Counted as Living Area:
Yes

Heated: Yes
Finished: Yes
Enclosed: Yes
Contiguous:
Yes
Permitted: Yes
Wet Space: Yes
Addition: No
Conversion: No

20 Floor 2 - Bedroom

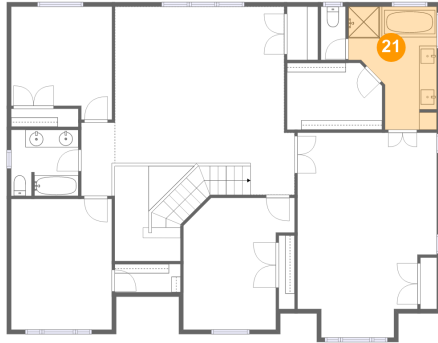


Dimensions: 12'7" x 14'11"
Area: 160 sq. ft
Counted as Living Area:
Yes

Heated: Yes
Finished: Yes
Enclosed: Yes
Contiguous:
Yes
Permitted: Yes
Wet Space: No
Addition: No
Conversion: No

**524 Faulkner Drive, Schertz, Guadalupe County,
Texas, United States, 78154**

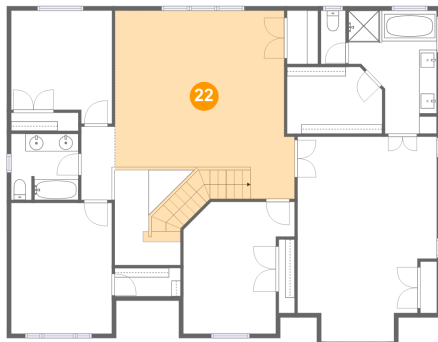
21 Floor 2 - Primary Bath



Dimensions: 10'0" x 14'0"
Area: 110 sq. ft
Counted as Living Area:
Yes

Heated: Yes
Finished: Yes
Enclosed: Yes
Contiguous:
Yes
Permitted: Yes
Wet Space: Yes
Addition: No
Conversion: No

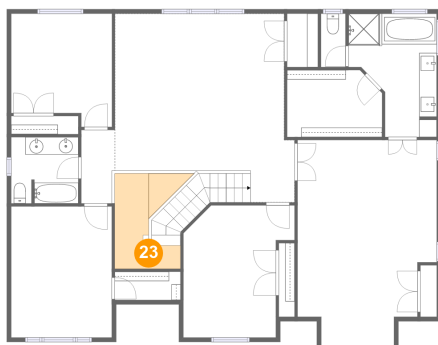
22 Floor 2 - Loft



Dimensions: 20'5" x 21'4"
Area: 417 sq. ft
Counted as Living Area:
Yes

Heated: Yes
Finished: Yes
Enclosed: Yes
Contiguous:
Yes
Permitted: Yes
Wet Space: No
Addition: No
Conversion: No

23 Floor 2 - Open To Below

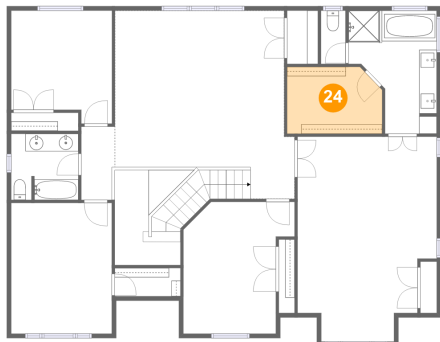


Dimensions: 7'6" x 10'9"
Area: 64 sq. ft
Counted as Living Area: No

Heated: No
Finished: No
Enclosed: No
Contiguous: Yes
Permitted: No
Wet Space: No
Addition: No
Conversion: No

**524 Faulkner Drive, Schertz, Guadalupe County,
Texas, United States, 78154**

24 Floor 2 - W.i.c.



Dimensions: 10'9" x 7'7"
Area: 78 sq. ft
Counted as Living Area:
Yes

Heated: Yes
Finished: Yes
Enclosed: Yes
Contiguous:
Yes
Permitted: Yes
Wet Space: No
Addition: No
Conversion: No