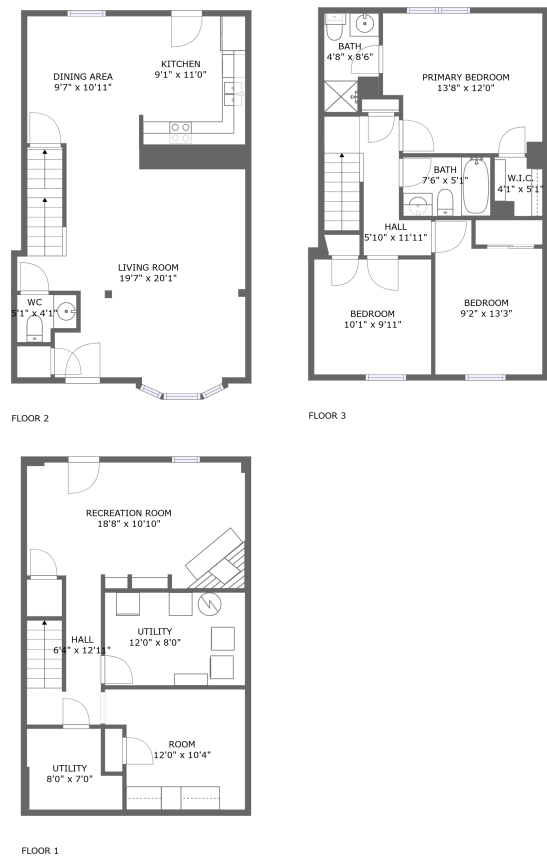


Home report

8210 Red Wing Court, Frederick, Frederick County, Maryland,
United States, 21701



Total Area: 1601 sq. ft

Below Ground: 413 sq. ft, Floor 2: 598 sq. ft, Floor 3: 590 sq. ft
Excluded: Utility 146 sq. ft, Walls: 115 sq. ft

Property summary

 **3** Floors

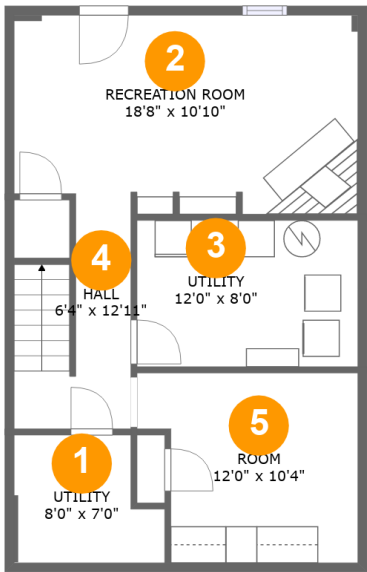
 **3** Bedrooms

 **2** Bathrooms

 **1** Half baths

Home report

8210 Red Wing Court, Frederick, Frederick County, Maryland,
United States, 21701



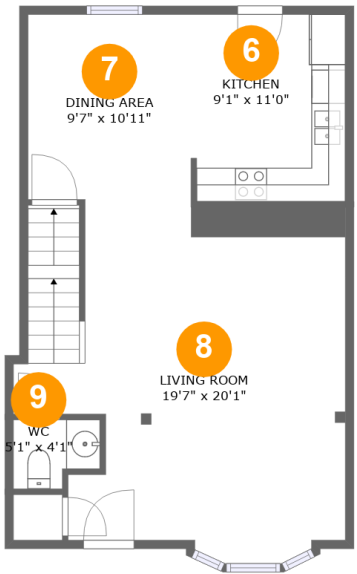
Room dimensions

Floor 1 Below ground Total:413sqft Excluded: 146sqft

#		Max Dimensions	sqft	Included
1	Utility	8'0" x 7'0"	50 sq. ft	No
2	Recreation Room	18'8" x 10'10"	194 sq. ft	Yes
3	Utility	12'0" x 8'0"	96 sq. ft	No
4	Hall	6'4" x 12'11"	67 sq. ft	Yes
5	Room	12'0" x 10'4"	111 sq. ft	Yes

Home report

8210 Red Wing Court, Frederick, Frederick County, Maryland,
United States, 21701



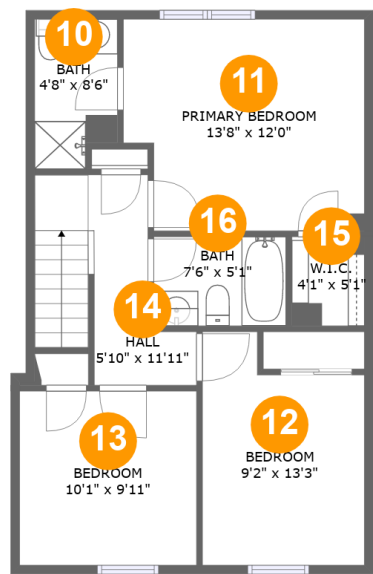
Room dimensions

Floor 2 Total:598sqft Excluded: 0sqft

#		Max Dimensions	sqft	Included
6	Kitchen	9'1" x 11'0"	100 sq. ft	Yes
7	Dining Area	9'7" x 10'11"	105 sq. ft	Yes
8	Living Room	19'7" x 20'1"	354 sq. ft	Yes
9	WC	5'1" x 4'1"	18 sq. ft	Yes

Home report

8210 Red Wing Court, Frederick, Frederick County, Maryland,
United States, 21701



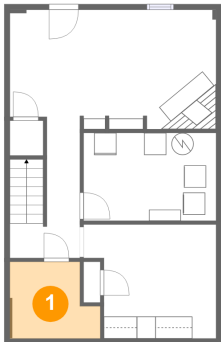
Room dimensions

Floor 3 Total:590sqft Excluded: 0sqft

#		Max Dimensions	sqft	Included
10	Bath	4'8" x 8'6"	37 sq. ft	Yes
11	Primary Bedroom	13'8" x 12'0"	156 sq. ft	Yes
12	Bedroom	9'2" x 13'3"	107 sq. ft	Yes
13	Bedroom	10'1" x 9'11"	99 sq. ft	Yes
14	Hall	5'10" x 11'11"	77 sq. ft	Yes
15	W.I.C.	4'1" x 5'1"	21 sq. ft	Yes
16	Bath	7'6" x 5'1"	38 sq. ft	Yes

8210 Red Wing Court, Frederick, Frederick County, Maryland,
United States, 21701

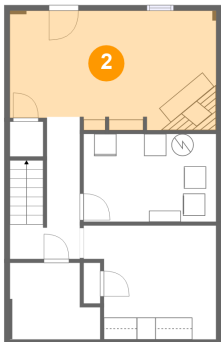
1 Floor 1 - Utility



Max Dimensions: 8'0" x 7'0"
Calculated Area: 50 sq. ft
Included: No

Heated: Yes
Finished: No
Enclosed: Yes
Contiguous: Yes
Permitted: Yes
Wet space: No
Addition: No
Conversion: No

2 Floor 1 - Recreation Room

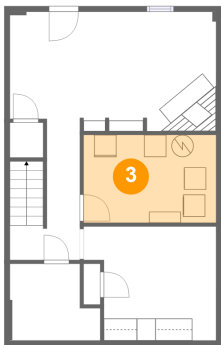


Max Dimensions: 18'8" x 10'10"
Calculated Area: 194 sq. ft
Included: Yes

Heated: Yes
Finished: Yes
Enclosed: Yes
Contiguous: Yes
Permitted: Yes
Wet space: No
Addition: No
Conversion: No

8210 Red Wing Court, Frederick, Frederick County, Maryland,
United States, 21701

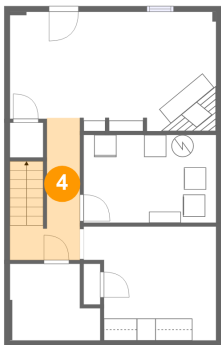
3 Floor 1 - Utility



Max Dimensions: 12'0" x 8'0"
Calculated Area: 96 sq. ft
Included: No

Heated: Yes
Finished: No
Enclosed: Yes
Contiguous: Yes
Permitted: Yes
Wet space: No
Addition: No
Conversion: No

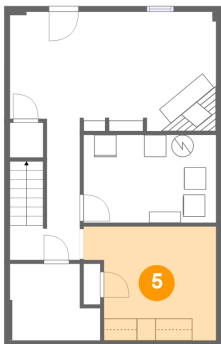
4 Floor 1 - Hall



Max Dimensions: 6'4" x 12'11"
Calculated Area: 67 sq. ft
Included: Yes

Heated: Yes
Finished: Yes
Enclosed: Yes
Contiguous: Yes
Permitted: Yes
Wet space: No
Addition: No
Conversion: No

5 Floor 1 - Room

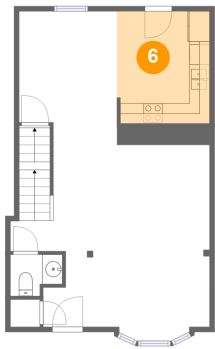


Max Dimensions: 12'0" x 10'4"
Calculated Area: 111 sq. ft
Included: Yes

Heated: Yes
Finished: Yes
Enclosed: Yes
Contiguous: Yes
Permitted: Yes
Wet space: No
Addition: No
Conversion: No

8210 Red Wing Court, Frederick, Frederick County, Maryland,
United States, 21701

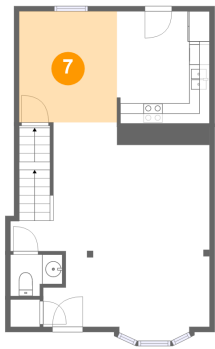
6 Floor 2 - Kitchen



Max Dimensions: 9'1" x 11'0"
Calculated Area: 100 sq. ft
Included: Yes

Heated: Yes
Finished: Yes
Enclosed: Yes
Contiguous: Yes
Permitted: Yes
Wet space: No
Addition: No
Conversion: No

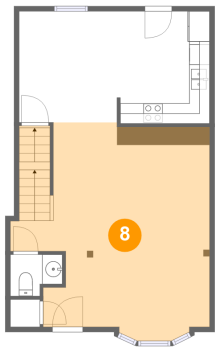
7 Floor 2 - Dining Area



Max Dimensions: 9'7" x 10'11"
Calculated Area: 105 sq. ft
Included: Yes

Heated: Yes
Finished: Yes
Enclosed: Yes
Contiguous: Yes
Permitted: Yes
Wet space: No
Addition: No
Conversion: No

8 Floor 2 - Living Room

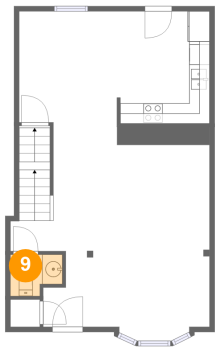


Max Dimensions: 19'7" x 20'1"
Calculated Area: 354 sq. ft
Included: Yes

Heated: Yes
Finished: Yes
Enclosed: Yes
Contiguous: Yes
Permitted: Yes
Wet space: No
Addition: No
Conversion: No

8210 Red Wing Court, Frederick, Frederick County, Maryland,
United States, 21701

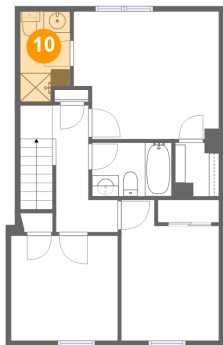
9 Floor 2 - WC



Max Dimensions: 5'1" x 4'1"
Calculated Area: 18 sq. ft
Included: Yes

Heated: Yes
Finished: Yes
Enclosed: Yes
Contiguous: Yes
Permitted: Yes
Wet space: Yes
Addition: No
Conversion: No

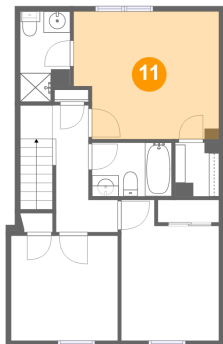
10 Floor 3 - Bath



Max Dimensions: 4'8" x 8'6"
Calculated Area: 37 sq. ft
Included: Yes

Heated: Yes
Finished: Yes
Enclosed: Yes
Contiguous: Yes
Permitted: Yes
Wet space: Yes
Addition: No
Conversion: No

11 Floor 3 - Primary Bedroom

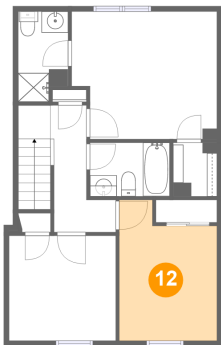


Max Dimensions: 13'8" x 12'0"
Calculated Area: 156 sq. ft
Included: Yes

Heated: Yes
Finished: Yes
Enclosed: Yes
Contiguous: Yes
Permitted: Yes
Wet space: No
Addition: No
Conversion: No

8210 Red Wing Court, Frederick, Frederick County, Maryland,
United States, 21701

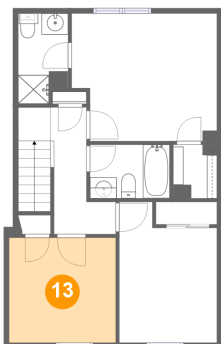
12 Floor 3 - Bedroom



Max Dimensions: 9'2" x 13'3"
Calculated Area: 107 sq. ft
Included: Yes

Heated: Yes
Finished: Yes
Enclosed: Yes
Contiguous: Yes
Permitted: Yes
Wet space: No
Addition: No
Conversion: No

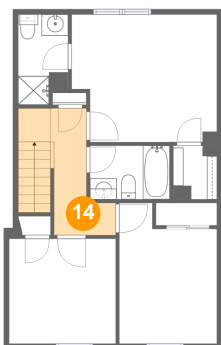
13 Floor 3 - Bedroom



Max Dimensions: 10'1" x 9'11"
Calculated Area: 99 sq. ft
Included: Yes

Heated: Yes
Finished: Yes
Enclosed: Yes
Contiguous: Yes
Permitted: Yes
Wet space: No
Addition: No
Conversion: No

14 Floor 3 - Hall

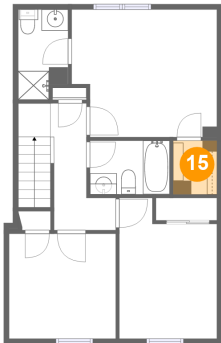


Max Dimensions: 5'10" x 11'11"
Calculated Area: 77 sq. ft
Included: Yes

Heated: Yes
Finished: Yes
Enclosed: Yes
Contiguous: Yes
Permitted: Yes
Wet space: No
Addition: No
Conversion: No

8210 Red Wing Court, Frederick, Frederick County, Maryland,
United States, 21701

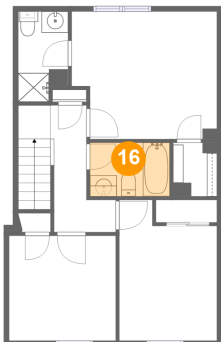
15 Floor 3 - W.I.C.



Max Dimensions: 4'1" x 5'1"
Calculated Area: 21 sq. ft
Included: Yes

Heated: Yes
Finished: Yes
Enclosed: Yes
Contiguous: Yes
Permitted: Yes
Wet space: No
Addition: No
Conversion: No

16 Floor 3 - Bath



Max Dimensions: 7'6" x 5'1"
Calculated Area: 38 sq. ft
Included: Yes

Heated: Yes
Finished: Yes
Enclosed: Yes
Contiguous: Yes
Permitted: Yes
Wet space: Yes
Addition: No
Conversion: No