


# 4251 Stockdale Road, Paso Robles, San Luis Obispo County, California, United States, 93446, Main Home



## Property summary

 **0** Garages

 **4** Bedrooms

 **4** Bathrooms

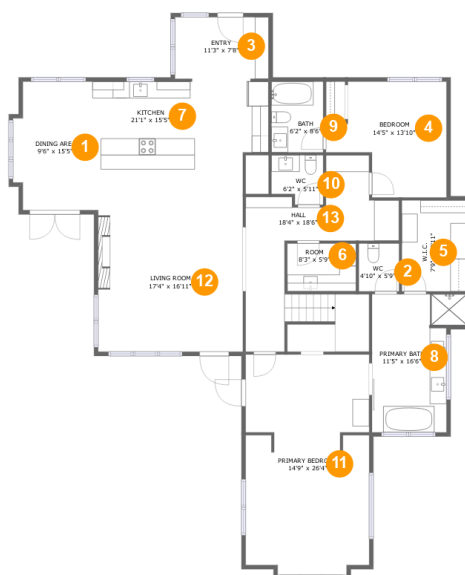
 **1** Half baths

 **2** Floors

 **3,047** Gross living area sqft

 **3,047** Total sqft

# 4251 Stockdale Road, Paso Robles, San Luis Obispo County, California, United States, 93446, Main Home



## Room dimensions

Floor 1

Total sqft: 2217 Living area: 2217

#		Dimensions	sqft	Counted as living area
1	Dining Area	9'6" x 15'5"	138 sq. ft	Yes
2	WC	4'10" x 5'9"	28 sq. ft	Yes
3	Entry	11'3" x 7'8"	85 sq. ft	Yes
4	Bedroom	14'5" x 13'10"	157 sq. ft	Yes
5	W.I.C.	7'9" x 10'11"	85 sq. ft	Yes
6	Room	8'3" x 5'9"	47 sq. ft	Yes
7	Kitchen	21'1" x 15'5"	303 sq. ft	Yes
8	Primary Bath	11'5" x 16'6"	156 sq. ft	Yes
9	Bath	6'2" x 8'6"	52 sq. ft	Yes
10	WC	6'2" x 5'11"	33 sq. ft	Yes
11	Primary Bedroom	14'9" x 26'4"	379 sq. ft	Yes

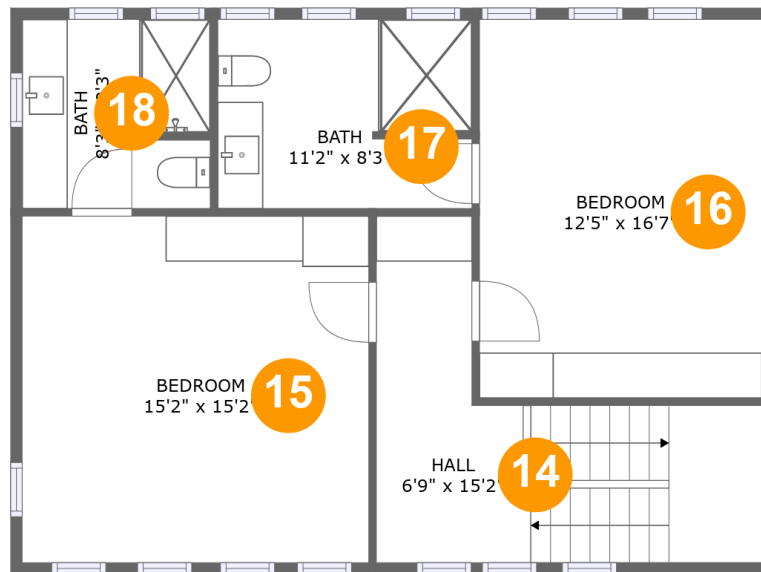
Scan captured on Wed, 12 Mar 2025 04:35:09 GMT

Information is calculated by Cubicasa technology deemed highly reliable but not guaranteed.

**4251 Stockdale Road, Paso Robles, San Luis Obispo  
County, California, United States, 93446, Main Home**

#		Dimensions	sqft	Counted as living area
12	Living Room	17'4" x 16'11"	293 sq. ft	Yes
13	Hall	18'4" x 18'6"	244 sq. ft	Yes

# 4251 Stockdale Road, Paso Robles, San Luis Obispo County, California, United States, 93446, Main Home



## Room dimensions

Floor 2

Total sqft: 830

Living area: 830

#		Dimensions	sqft	Counted as living area
14	Hall	6'9" x 15'2"	151 sq. ft	Yes
15	Bedroom	15'2" x 15'2"	231 sq. ft	Yes
16	Bedroom	12'5" x 16'7"	205 sq. ft	Yes
17	Bath	11'2" x 8'3"	91 sq. ft	Yes
18	Bath	8'3" x 8'3"	67 sq. ft	Yes

# 4251 Stockdale Road, Paso Robles, San Luis Obispo County, California, United States, 93446, Main Home

## 1 Floor 1 - Dining Area



Dimensions: 9'6" x 15'5"  
Area: 138 sq. ft  
Counted as living area: Yes

Heated: Yes  
Finished: Yes  
Enclosed: Yes  
Contiguous: Yes  
Permitted: Yes  
Wet space: No  
Addition: No  
Conversion: No

## 2 Floor 1 - WC



Dimensions: 4'10" x 5'9"  
Area: 28 sq. ft  
Counted as living area: Yes

Heated: Yes  
Finished: Yes  
Enclosed: Yes  
Contiguous: Yes  
Permitted: Yes  
Wet space: Yes  
Addition: No  
Conversion: No

# 4251 Stockdale Road, Paso Robles, San Luis Obispo County, California, United States, 93446, Main Home

## 3 Floor 1 - Entry



Dimensions: 11'3" x 7'8"  
Area: 85 sq. ft  
Counted as living area: Yes

Heated: Yes  
Finished: Yes  
Enclosed: Yes  
Contiguous: Yes  
Permitted: Yes  
Wet space: No  
Addition: No  
Conversion: No

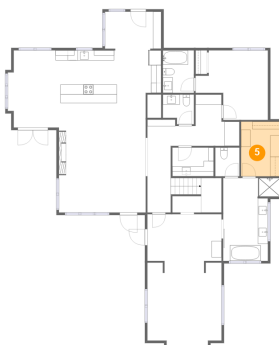
## 4 Floor 1 - Bedroom



Dimensions: 14'5" x 13'10"  
Area: 157 sq. ft  
Counted as living area: Yes

Heated: Yes  
Finished: Yes  
Enclosed: Yes  
Contiguous: Yes  
Permitted: Yes  
Wet space: No  
Addition: No  
Conversion: No

## 5 Floor 1 - W.I.C.



Dimensions: 7'9" x 10'11"  
Area: 85 sq. ft  
Counted as living area: Yes

Heated: Yes  
Finished: Yes  
Enclosed: Yes  
Contiguous: Yes  
Permitted: Yes  
Wet space: No  
Addition: No  
Conversion: No

# 4251 Stockdale Road, Paso Robles, San Luis Obispo County, California, United States, 93446, Main Home

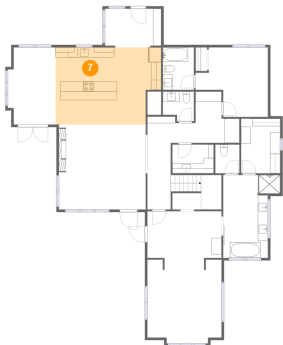
## 6 Floor 1 - Room



Dimensions: 8'3" x 5'9"  
Area: 47 sq. ft  
Counted as living area: Yes

Heated: Yes  
Finished: Yes  
Enclosed: Yes  
Contiguous: Yes  
Permitted: Yes  
Wet space: No  
Addition: No  
Conversion: No

## 7 Floor 1 - Kitchen



Dimensions: 21'1" x 15'5"  
Area: 303 sq. ft  
Counted as living area: Yes

Heated: Yes  
Finished: Yes  
Enclosed: Yes  
Contiguous: Yes  
Permitted: Yes  
Wet space: No  
Addition: No  
Conversion: No

## 8 Floor 1 - Primary Bath



Dimensions: 11'5" x 16'6"  
Area: 156 sq. ft  
Counted as living area: Yes

Heated: Yes  
Finished: Yes  
Enclosed: Yes  
Contiguous: Yes  
Permitted: Yes  
Wet space: Yes  
Addition: No  
Conversion: No

# 4251 Stockdale Road, Paso Robles, San Luis Obispo County, California, United States, 93446, Main Home

## 9 Floor 1 - Bath



Dimensions: 6'2" x 8'6"  
Area: 52 sq. ft  
Counted as living area: Yes

Heated: Yes  
Finished: Yes  
Enclosed: Yes  
Contiguous: Yes  
Permitted: Yes  
Wet space: Yes  
Addition: No  
Conversion: No

## 10 Floor 1 - WC



Dimensions: 6'2" x 5'11"  
Area: 33 sq. ft  
Counted as living area: Yes

Heated: Yes  
Finished: Yes  
Enclosed: Yes  
Contiguous: Yes  
Permitted: Yes  
Wet space: Yes  
Addition: No  
Conversion: No

## 11 Floor 1 - Primary Bedroom



Dimensions: 14'9" x 26'4"  
Area: 379 sq. ft  
Counted as living area: Yes

Heated: Yes  
Finished: Yes  
Enclosed: Yes  
Contiguous: Yes  
Permitted: Yes  
Wet space: No  
Addition: No  
Conversion: No



# 4251 Stockdale Road, Paso Robles, San Luis Obispo County, California, United States, 93446, Main Home

## 12 Floor 1 - Living Room



Dimensions: 17'4" x 16'11"  
Area: 293 sq. ft  
Counted as living area: Yes

Heated: Yes  
Finished: Yes  
Enclosed: Yes  
Contiguous: Yes  
Permitted: Yes  
Wet space: No  
Addition: No  
Conversion: No

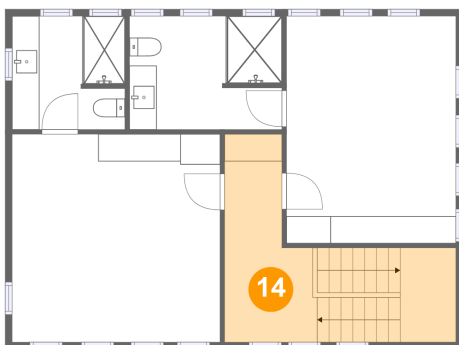
## 13 Floor 1 - Hall



Dimensions: 18'4" x 18'6"  
Area: 244 sq. ft  
Counted as living area: Yes

Heated: Yes  
Finished: Yes  
Enclosed: Yes  
Contiguous: Yes  
Permitted: Yes  
Wet space: No  
Addition: No  
Conversion: No

## 14 Floor 2 - Hall

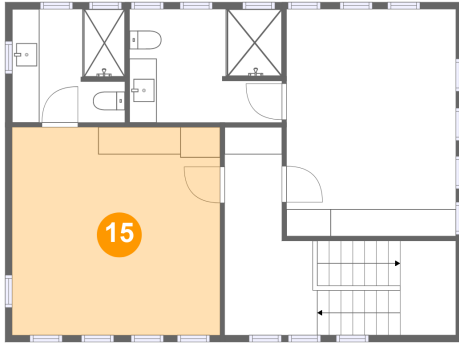


Dimensions: 6'9" x 15'2"  
Area: 151 sq. ft  
Counted as living area: Yes

Heated: Yes  
Finished: Yes  
Enclosed: Yes  
Contiguous: Yes  
Permitted: Yes  
Wet space: No  
Addition: No  
Conversion: No

# 4251 Stockdale Road, Paso Robles, San Luis Obispo County, California, United States, 93446, Main Home

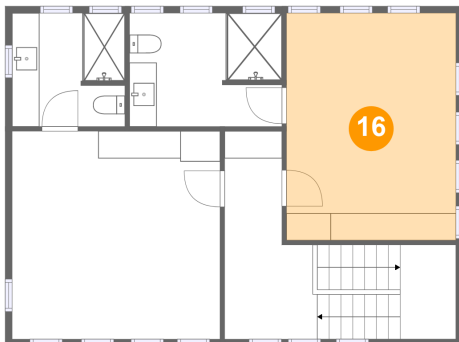
## 15 Floor 2 - Bedroom



Dimensions: 15'2" x 15'2"  
Area: 231 sq. ft  
Counted as living area: Yes

Heated: Yes  
Finished: Yes  
Enclosed: Yes  
Contiguous: Yes  
Permitted: Yes  
Wet space: No  
Addition: No  
Conversion: No

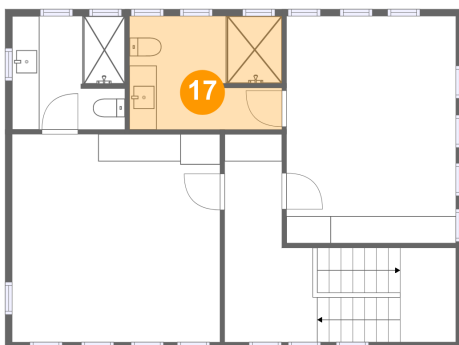
## 16 Floor 2 - Bedroom



Dimensions: 12'5" x 16'7"  
Area: 205 sq. ft  
Counted as living area: Yes

Heated: Yes  
Finished: Yes  
Enclosed: Yes  
Contiguous: Yes  
Permitted: Yes  
Wet space: No  
Addition: No  
Conversion: No

## 17 Floor 2 - Bath

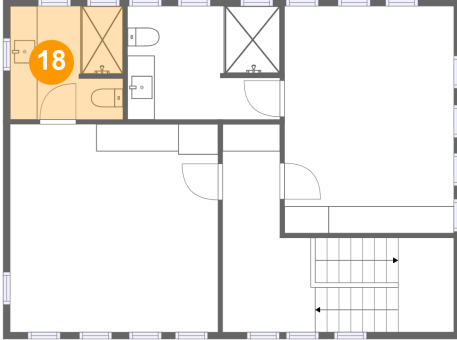


Dimensions: 11'2" x 8'3"  
Area: 91 sq. ft  
Counted as living area: Yes

Heated: Yes  
Finished: Yes  
Enclosed: Yes  
Contiguous: Yes  
Permitted: Yes  
Wet space: Yes  
Addition: No  
Conversion: No

# 4251 Stockdale Road, Paso Robles, San Luis Obispo County, California, United States, 93446, Main Home

## 18 Floor 2 - Bath



Dimensions: 8'3" x 8'3"  
Area: 67 sq. ft  
Counted as living area: Yes

Heated: Yes  
Finished: Yes  
Enclosed: Yes  
Contiguous: Yes  
Permitted: Yes  
Wet space: Yes  
Addition: No  
Conversion: No