

Home report

5220 Southwest Neal Avenue, Wakonda Beach, Waldport,
Lincoln County, Oregon, United States, 97394



Total Area: 3238 sq. ft

Floor 1: 1523 sq. ft, Floor 2: 1715 sq. ft

Excluded: Outdoor Porch 249 sq. ft, Outdoor Deck 324 sq. ft, Garage 2086 sq. ft, Outdoor Balcony 86 sq. ft, Opentobelow 305 sq. ft

Property summary

 2 Floors

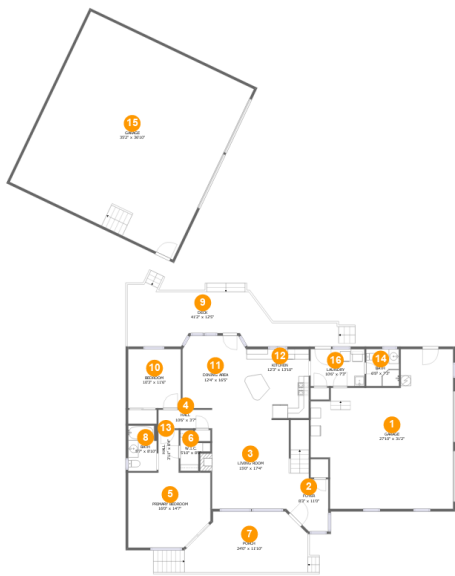
 4 Bedrooms

 4 Bathrooms

 2 Garages

Home report

5220 Southwest Neal Avenue, Wakonda Beach, Waldport,
Lincoln County, Oregon, United States, 97394



Room dimensions

Floor 1 Total:1523sqft Excluded: 2659sqft

#		Max Dimensions	sqft	Included
1	Garage	27'10" x 31'2"	684 sq. ft	No
2	Foyer	8'3" x 11'0"	114 sq. ft	Yes
3	Living Room	15'0" x 17'4"	267 sq. ft	Yes
4	Hall	10'6" x 3'7"	38 sq. ft	Yes
5	Primary Bedroom	16'0" x 14'7"	220 sq. ft	Yes
6	W.I.C.	5'10" x 8'0"	29 sq. ft	Yes
7	Porch	24'0" x 11'10"	249 sq. ft	No
8	Bath	5'7" x 8'10"	49 sq. ft	Yes
9	Deck	41'2" x 12'5"	324 sq. ft	No
10	Bedroom	10'3" x 11'6"	118 sq. ft	Yes
11	Dining Area	12'4" x 16'5"	186 sq. ft	Yes

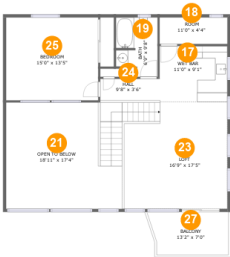
Home report

**5220 Southwest Neal Avenue, Wakonda Beach, Waldport,
Lincoln County, Oregon, United States, 97394**

#		Max Dimensions	sqft	Included
12	Kitchen	12'3" x 13'10"	167 sq. ft	Yes
13	Hall	3'11" x 8'4"	33 sq. ft	Yes
14	Bath	6'5" x 7'3"	46 sq. ft	Yes
15	Garage	35'2" x 36'10"	1296 sq. ft	No
16	Laundry	10'6" x 7'3"	76 sq. ft	Yes

Home report

5220 Southwest Neal Avenue, Wakonda Beach, Waldport,
Lincoln County, Oregon, United States, 97394



Room dimensions

Floor 2 Total:1715sqft Excluded: 391sqft

#		Max Dimensions	sqft	Included
17	Wet Bar	11'0" x 9'1"	100 sq. ft	Yes
18	Room	11'0" x 4'4"	48 sq. ft	Yes
19	Bath	6'9" x 9'8"	59 sq. ft	Yes
20	Bedroom	11'10" x 10'10"	126 sq. ft	Yes
21	Open To Below	18'11" x 17'4"	286 sq. ft	No
22	W.I.C.	6'1" x 5'2"	31 sq. ft	Yes
23	Loft	16'9" x 17'5"	339 sq. ft	Yes
24	Hall	9'8" x 3'6"	36 sq. ft	Yes
25	Bedroom	15'0" x 13'5"	202 sq. ft	Yes
26	Recreation Room	28'10" x 22'0"	517 sq. ft	Yes
27	Balcony	13'2" x 7'0"	86 sq. ft	No

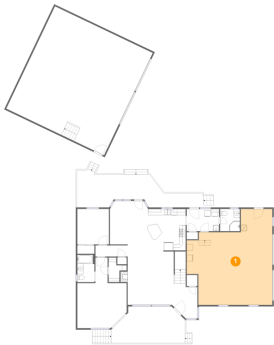
Home report

5220 Southwest Neal Avenue, Wakonda Beach, Waldport,
Lincoln County, Oregon, United States, 97394

#		Max Dimensions	sqft	Included
28	Bath	6'1" x 6'4"	37 sq. ft	Yes

5220 Southwest Neal Avenue, Wakonda Beach, Waldport,
Lincoln County, Oregon, United States, 97394

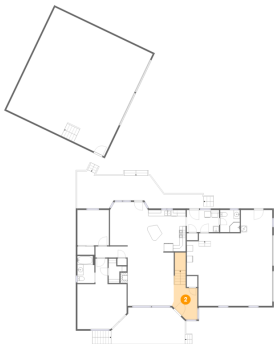
1 Floor 1 - Garage



Max Dimensions: 27'10" x 31'2"
Calculated Area: 684 sq. ft
Included: No

Heated: No
Finished: No
Enclosed: Yes
Contiguous: Yes
Permitted: Yes
Wet space: No
Addition: No
Conversion: No

2 Floor 1 - Foyer

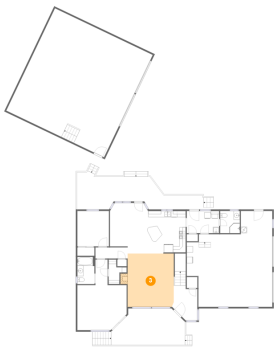


Max Dimensions: 8'3" x 11'0"
Calculated Area: 114 sq. ft
Included: Yes

Heated: Yes
Finished: Yes
Enclosed: Yes
Contiguous: Yes
Permitted: Yes
Wet space: No
Addition: No
Conversion: No

5220 Southwest Neal Avenue, Wakonda Beach, Waldport,
Lincoln County, Oregon, United States, 97394

3 Floor 1 - Living Room



Max Dimensions: 15'0" x 17'4"
Calculated Area: 267 sq. ft
Included: Yes

Heated: Yes
Finished: Yes
Enclosed: Yes
Contiguous: Yes
Permitted: Yes
Wet space: No
Addition: No
Conversion: No

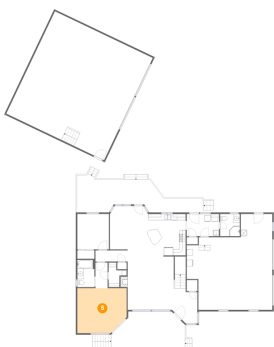
4 Floor 1 - Hall



Max Dimensions: 10'6" x 3'7"
Calculated Area: 38 sq. ft
Included: Yes

Heated: Yes
Finished: Yes
Enclosed: Yes
Contiguous: Yes
Permitted: Yes
Wet space: No
Addition: No
Conversion: No

5 Floor 1 - Primary Bedroom

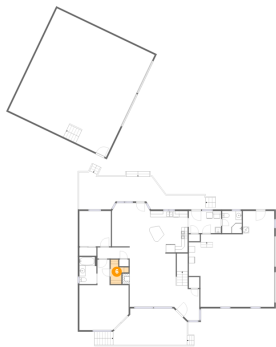


Max Dimensions: 16'0" x 14'7"
Calculated Area: 220 sq. ft
Included: Yes

Heated: Yes
Finished: Yes
Enclosed: Yes
Contiguous: Yes
Permitted: Yes
Wet space: No
Addition: No
Conversion: No

5220 Southwest Neal Avenue, Wakonda Beach, Waldport,
Lincoln County, Oregon, United States, 97394

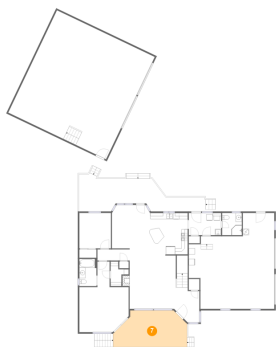
6 Floor 1 - W.I.C.



Max Dimensions: 5'10" x 8'0"
Calculated Area: 29 sq. ft
Included: Yes

Heated: Yes
Finished: Yes
Enclosed: Yes
Contiguous: Yes
Permitted: Yes
Wet space: No
Addition: No
Conversion: No

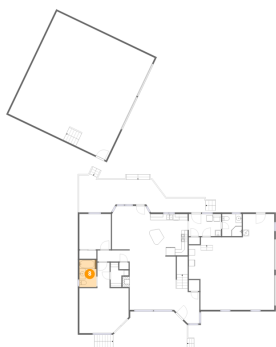
7 Floor 1 - Porch



Max Dimensions: 24'0" x 11'10"
Calculated Area: 249 sq. ft
Included: No

Heated: No
Finished: Yes
Enclosed: No
Contiguous: Yes
Permitted: Yes
Wet space: No
Addition: No
Conversion: No

8 Floor 1 - Bath

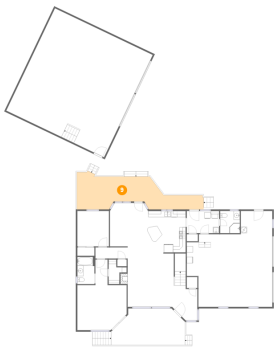


Max Dimensions: 5'7" x 8'10"
Calculated Area: 49 sq. ft
Included: Yes

Heated: Yes
Finished: Yes
Enclosed: Yes
Contiguous: Yes
Permitted: Yes
Wet space: Yes
Addition: No
Conversion: No

5220 Southwest Neal Avenue, Wakonda Beach, Waldport,
Lincoln County, Oregon, United States, 97394

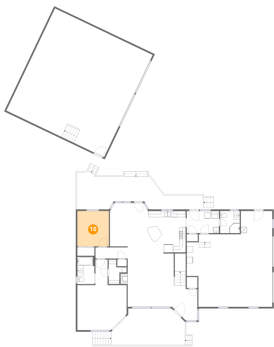
9 Floor 1 - Deck



Max Dimensions: 41'2" x 12'5"
Calculated Area: 324 sq. ft
Included: No

Heated: No
Finished: Yes
Enclosed: No
Contiguous: Yes
Permitted: Yes
Wet space: No
Addition: No
Conversion: No

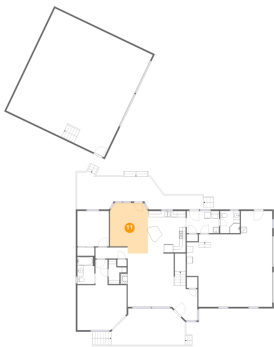
10 Floor 1 - Bedroom



Max Dimensions: 10'3" x 11'6"
Calculated Area: 118 sq. ft
Included: Yes

Heated: Yes
Finished: Yes
Enclosed: Yes
Contiguous: Yes
Permitted: Yes
Wet space: No
Addition: No
Conversion: No

11 Floor 1 - Dining Area

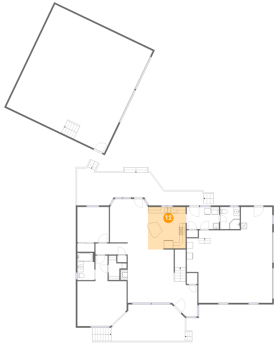


Max Dimensions: 12'4" x 16'5"
Calculated Area: 186 sq. ft
Included: Yes

Heated: Yes
Finished: Yes
Enclosed: Yes
Contiguous: Yes
Permitted: Yes
Wet space: No
Addition: No
Conversion: No

5220 Southwest Neal Avenue, Wakonda Beach, Waldport,
Lincoln County, Oregon, United States, 97394

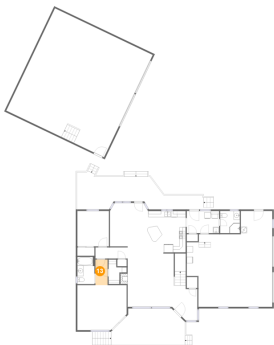
12 Floor 1 - Kitchen



Max Dimensions: 12'3" x 13'10"
Calculated Area: 167 sq. ft
Included: Yes

Heated: Yes
Finished: Yes
Enclosed: Yes
Contiguous: Yes
Permitted: Yes
Wet space: No
Addition: No
Conversion: No

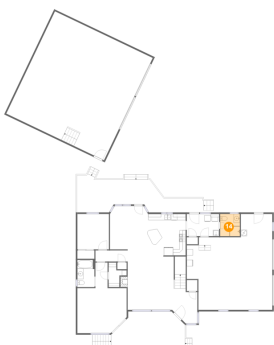
13 Floor 1 - Hall



Max Dimensions: 3'11" x 8'4"
Calculated Area: 33 sq. ft
Included: Yes

Heated: Yes
Finished: Yes
Enclosed: Yes
Contiguous: Yes
Permitted: Yes
Wet space: No
Addition: No
Conversion: No

14 Floor 1 - Bath

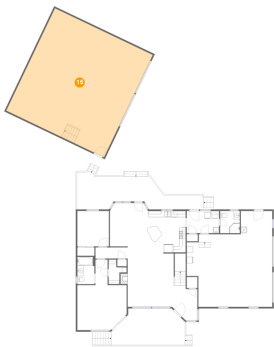


Max Dimensions: 6'5" x 7'3"
Calculated Area: 46 sq. ft
Included: Yes

Heated: Yes
Finished: Yes
Enclosed: Yes
Contiguous: Yes
Permitted: Yes
Wet space: Yes
Addition: No
Conversion: No

5220 Southwest Neal Avenue, Wakonda Beach, Waldport,
Lincoln County, Oregon, United States, 97394

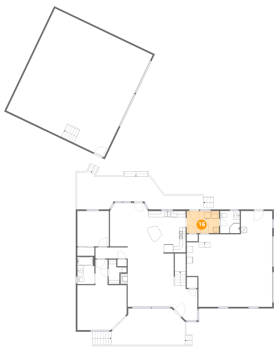
15 Floor 1 - Garage



Max Dimensions: 35'2" x 36'10"
Calculated Area: 1296 sq. ft
Included: No

Heated: No
Finished: No
Enclosed: Yes
Contiguous: Yes
Permitted: Yes
Wet space: No
Addition: No
Conversion: No

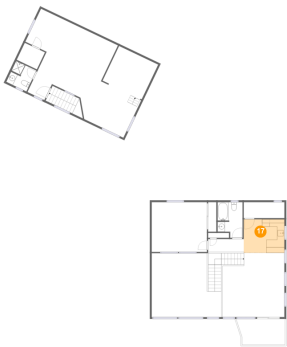
16 Floor 1 - Laundry



Max Dimensions: 10'6" x 7'3"
Calculated Area: 76 sq. ft
Included: Yes

Heated: Yes
Finished: Yes
Enclosed: Yes
Contiguous: Yes
Permitted: Yes
Wet space: No
Addition: No
Conversion: No

17 Floor 2 - Wet Bar



Max Dimensions: 11'0" x 9'1"
Calculated Area: 100 sq. ft
Included: Yes

Heated: Yes
Finished: Yes
Enclosed: Yes
Contiguous: Yes
Permitted: Yes
Wet space: No
Addition: No
Conversion: No

18 Floor 2 - Room



Max Dimensions: 11'0" x 4'4"
Calculated Area: 48 sq. ft
Included: Yes

Heated: Yes
Finished: Yes
Enclosed: Yes
Contiguous: Yes
Permitted: Yes
Wet space: No
Addition: No
Conversion: No

19 Floor 2 - Bath



Max Dimensions: 6'9" x 9'8"
Calculated Area: 59 sq. ft
Included: Yes

Heated: Yes
Finished: Yes
Enclosed: Yes
Contiguous: Yes
Permitted: Yes
Wet space: Yes
Addition: No
Conversion: No

20 Floor 2 - Bedroom



Max Dimensions: 11'10" x 10'10"
Calculated Area: 126 sq. ft
Included: Yes

Heated: Yes
Finished: Yes
Enclosed: Yes
Contiguous: Yes
Permitted: Yes
Wet space: No
Addition: No
Conversion: No

5220 Southwest Neal Avenue, Wakonda Beach, Waldport,
Lincoln County, Oregon, United States, 97394

21 Floor 2 - Open To Below



Max Dimensions: 18'11" x 17'4"
Calculated Area: 286 sq. ft
Included: No

Heated: No
Finished: No
Enclosed: No
Contiguous: Yes
Permitted: No
Wet space: No
Addition: No
Conversion: No

22 Floor 2 - W.I.C.



Max Dimensions: 6'1" x 5'2"
Calculated Area: 31 sq. ft
Included: Yes

Heated: Yes
Finished: Yes
Enclosed: Yes
Contiguous: Yes
Permitted: Yes
Wet space: No
Addition: No
Conversion: No

23 Floor 2 - Loft



Max Dimensions: 16'9" x 17'5"
Calculated Area: 339 sq. ft
Included: Yes

Heated: Yes
Finished: Yes
Enclosed: Yes
Contiguous: Yes
Permitted: Yes
Wet space: No
Addition: No
Conversion: No

24 Floor 2 - Hall



Max Dimensions: 9'8" x 3'6"
Calculated Area: 36 sq. ft
Included: Yes

Heated: Yes
Finished: Yes
Enclosed: Yes
Contiguous: Yes
Permitted: Yes
Wet space: No
Addition: No
Conversion: No

25 Floor 2 - Bedroom



Max Dimensions: 15'0" x 13'5"
Calculated Area: 202 sq. ft
Included: Yes

Heated: Yes
Finished: Yes
Enclosed: Yes
Contiguous: Yes
Permitted: Yes
Wet space: No
Addition: No
Conversion: No

26 Floor 2 - Recreation Room



Max Dimensions: 28'10" x 22'0"
Calculated Area: 517 sq. ft
Included: Yes

Heated: Yes
Finished: Yes
Enclosed: Yes
Contiguous: Yes
Permitted: Yes
Wet space: No
Addition: No
Conversion: No

5220 Southwest Neal Avenue, Wakonda Beach, Waldport,
Lincoln County, Oregon, United States, 97394

27 Floor 2 - Balcony



Max Dimensions: 13'2" x 7'0"
Calculated Area: 86 sq. ft
Included: No

Heated: No
Finished: Yes
Enclosed: No
Contiguous: Yes
Permitted: Yes
Wet space: No
Addition: No
Conversion: No

28 Floor 2 - Bath



Max Dimensions: 6'1" x 6'4"
Calculated Area: 37 sq. ft
Included: Yes

Heated: Yes
Finished: Yes
Enclosed: Yes
Contiguous: Yes
Permitted: Yes
Wet space: Yes
Addition: No
Conversion: No