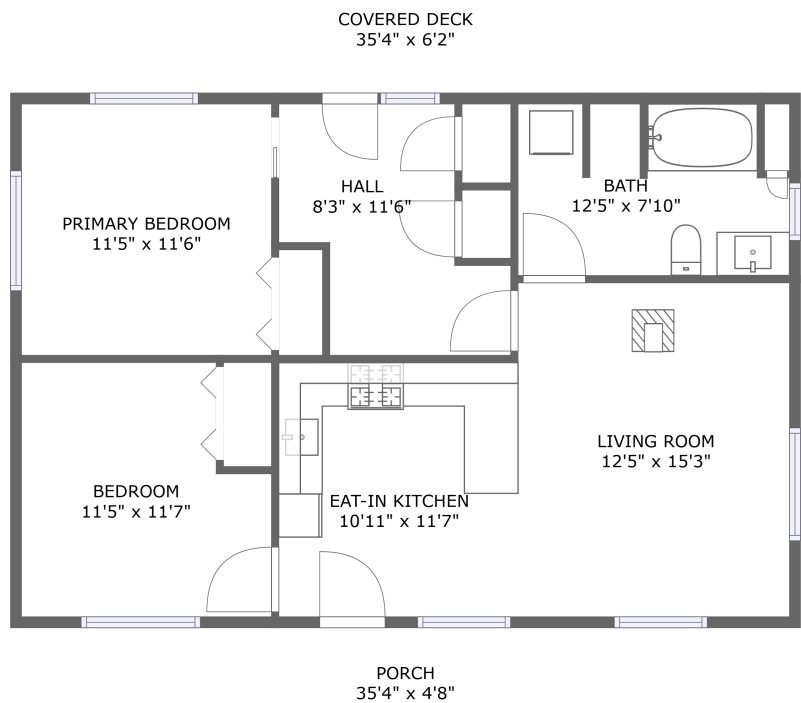



Home report


39145 Deer Cr Rd,Baker City,OR,US





FLOOR 1


Property summary


**0** Garages


**2** Bedrooms

**1** Bathrooms

**0** Half baths

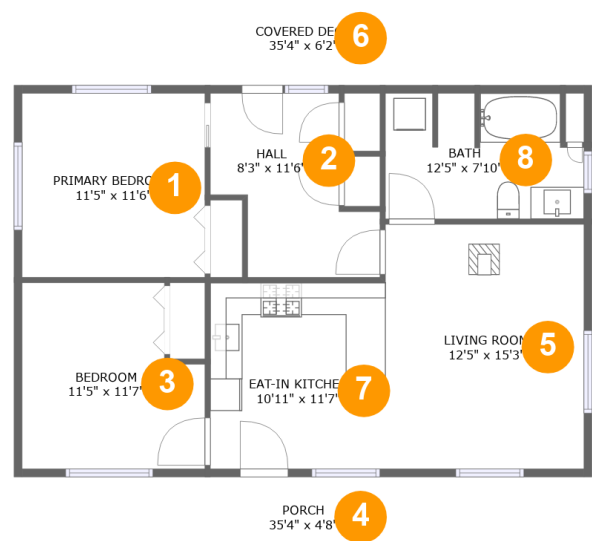
**1** Floors

**881** Gross living area sqft

**1,266** Total sqft

Home report

39145 Deer Cr Rd,Baker City,OR,US

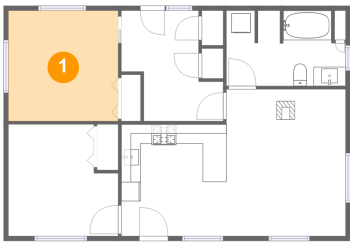


Room dimensions

Floor 1 Total sqft: 1266 Living area: 881

#		Dimensions	sqft	Counted as living area
1	Primary Bedroom	11'5" x 11'6"	131 sq. ft	Yes
2	Hall	8'3" x 11'6"	91 sq. ft	Yes
3	Bedroom	11'5" x 11'7"	120 sq. ft	Yes
4	Porch	35'4" x 4'8"	166 sq. ft	No
5	Living Room	12'5" x 15'3"	189 sq. ft	Yes
6	Covered Deck	35'4" x 6'2"	219 sq. ft	No
7	Eat-in Kitchen	10'11" x 11'7"	127 sq. ft	Yes
8	Bath	12'5" x 7'10"	90 sq. ft	Yes

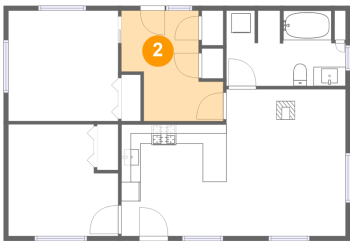
1 Floor 1 - Primary Bedroom



Dimensions: 11'5" x 11'6"
Area: 131 sq. ft
Counted as living area: Yes

Heated: Yes
Finished: Yes
Enclosed: Yes
Contiguous: Yes
Permitted: Yes
Wet space: No
Addition: No
Conversion: No

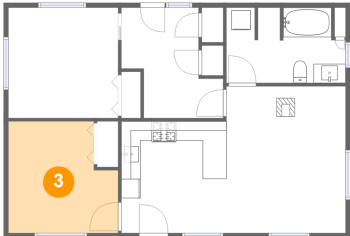
2 Floor 1 - Hall



Dimensions: 8'3" x 11'6"
Area: 91 sq. ft
Counted as living area: Yes

Heated: Yes
Finished: Yes
Enclosed: Yes
Contiguous: Yes
Permitted: Yes
Wet space: No
Addition: No
Conversion: No

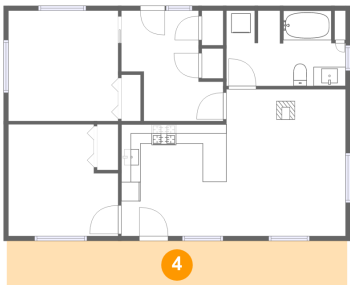
3 Floor 1 - Bedroom



Dimensions: 11'5" x 11'7"
Area: 120 sq. ft
Counted as living area: Yes

Heated: Yes
Finished: Yes
Enclosed: Yes
Contiguous: Yes
Permitted: Yes
Wet space: No
Addition: No
Conversion: No

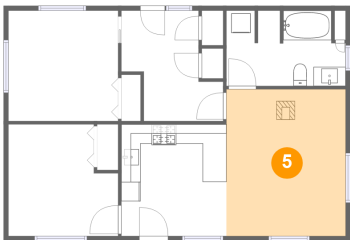
4 Floor 1 - Porch



Dimensions: 35'4" x 4'8"
Area: 166 sq. ft
Counted as living area: No

Heated: No
Finished: Yes
Enclosed: No
Contiguous: Yes
Permitted: Yes
Wet space: No
Addition: No
Conversion: No

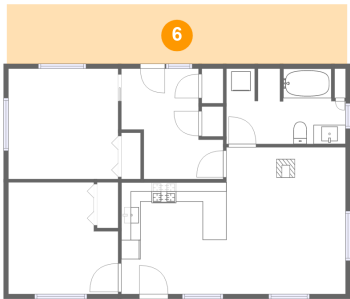
5 Floor 1 - Living Room



Dimensions: 12'5" x 15'3"
Area: 189 sq. ft
Counted as living area: Yes

Heated: Yes
Finished: Yes
Enclosed: Yes
Contiguous: Yes
Permitted: Yes
Wet space: No
Addition: No
Conversion: No

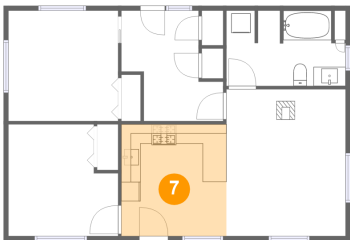
6 Floor 1 - Covered Deck



Dimensions: 35'4" x 6'2"
Area: 219 sq. ft
Counted as living area: No

Heated: No
Finished: Yes
Enclosed: No
Contiguous: Yes
Permitted: Yes
Wet space: No
Addition: No
Conversion: No

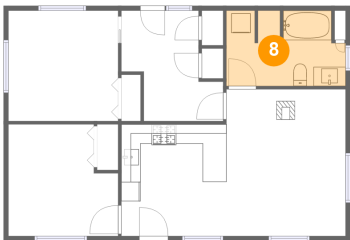
7 Floor 1 - Eat-in Kitchen



Dimensions: 10'11" x 11'7"
Area: 127 sq. ft
Counted as living area: Yes

Heated: Yes
Finished: Yes
Enclosed: Yes
Contiguous: Yes
Permitted: Yes
Wet space: No
Addition: No
Conversion: No

8 Floor 1 - Bath



Dimensions: 12'5" x 7'10"
Area: 90 sq. ft
Counted as living area: Yes

Heated: Yes
Finished: Yes
Enclosed: Yes
Contiguous: Yes
Permitted: Yes
Wet space: Yes
Addition: No
Conversion: No