

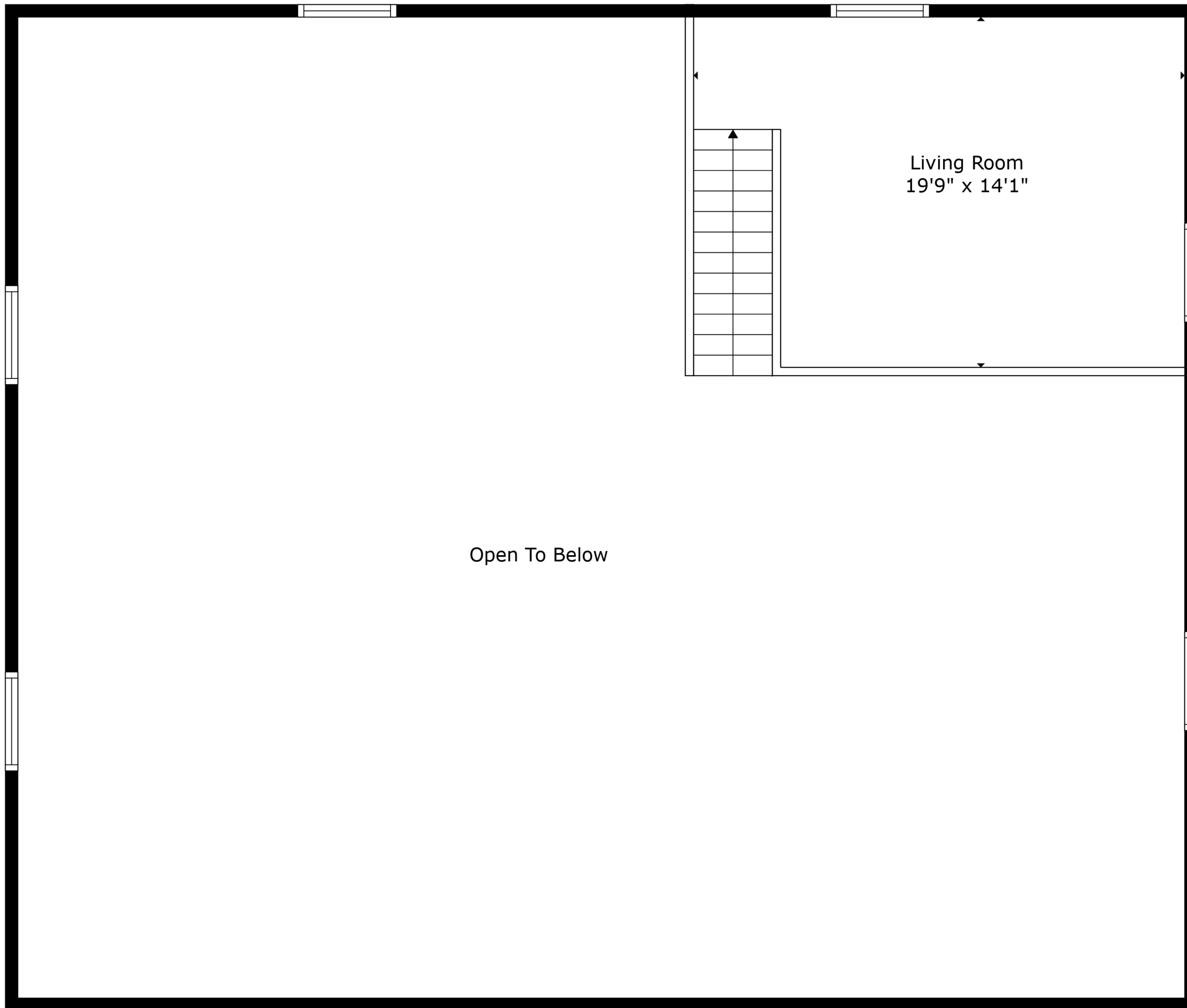
Garage
46'11" x 39'5"



TOTAL: 290 sq. ft
BELOW GROUND: 0 sq. ft, FLOOR 2: 290 sq. ft
EXCLUDED AREAS: GARAGE: 1853 sq. ft, OPEN TO BELOW: 1563 sq. ft

Measurements Provided Are For Informational Purposes Only And May Not Be Accurate.





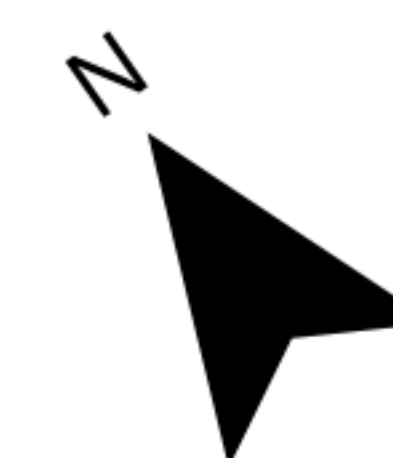
Open To Below

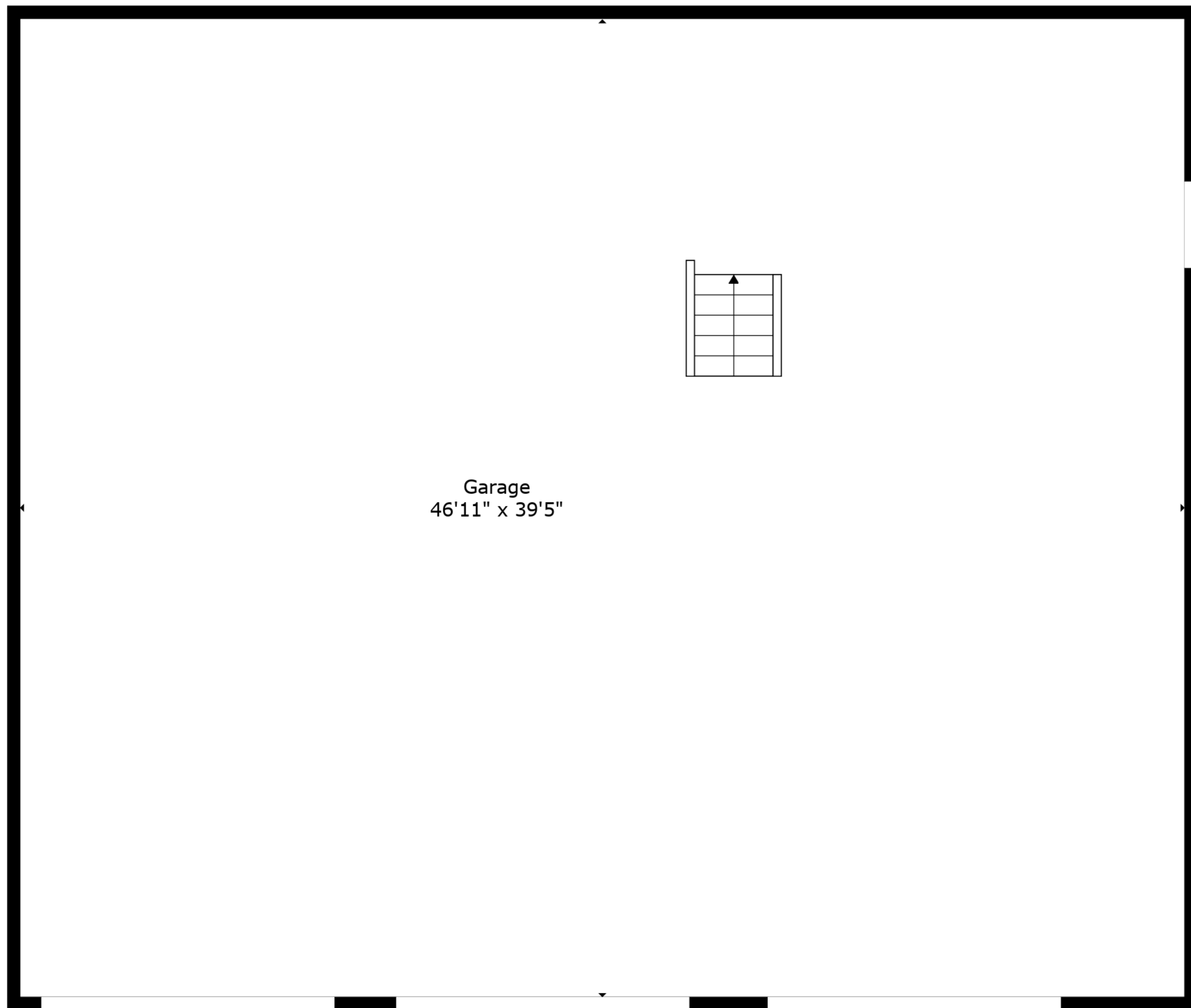
Living Room
19'9" x 14'1"



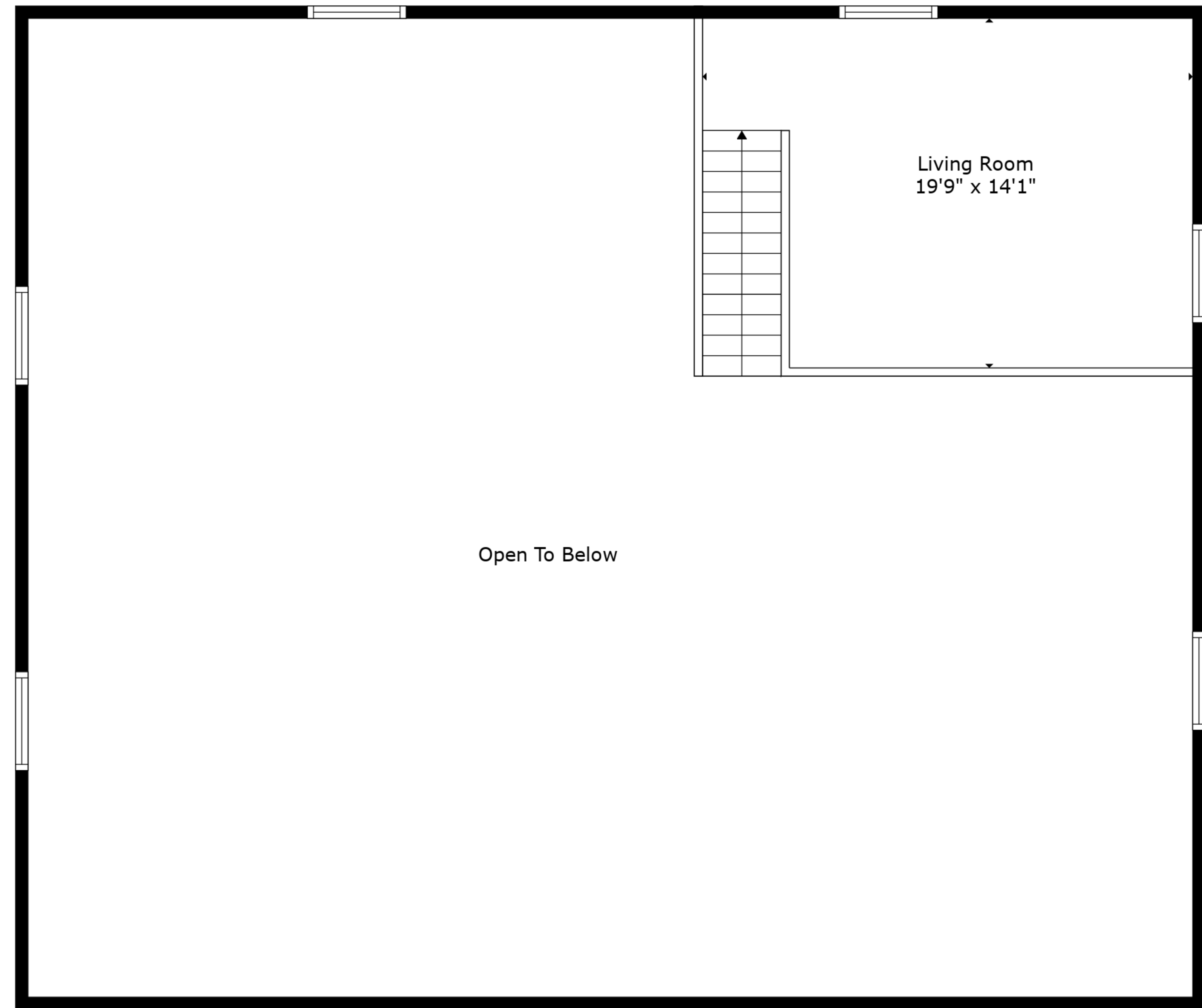
TOTAL: 290 sq. ft
BELOW GROUND: 0 sq. ft, FLOOR 2: 290 sq. ft
EXCLUDED AREAS: GARAGE: 1853 sq. ft, OPEN TO BELOW: 1563 sq. ft

Measurements Provided Are For Informational Purposes Only And May Not Be Accurate.





Floor 1



Floor 2



TOTAL: 290 sq. ft
BELOW GROUND: 0 sq. ft, FLOOR 2: 290 sq. ft
EXCLUDED AREAS: GARAGE: 1853 sq. ft, OPEN TO BELOW: 1563 sq. ft

Measurements Provided Are For Informational Purposes Only And May Not Be Accurate.

