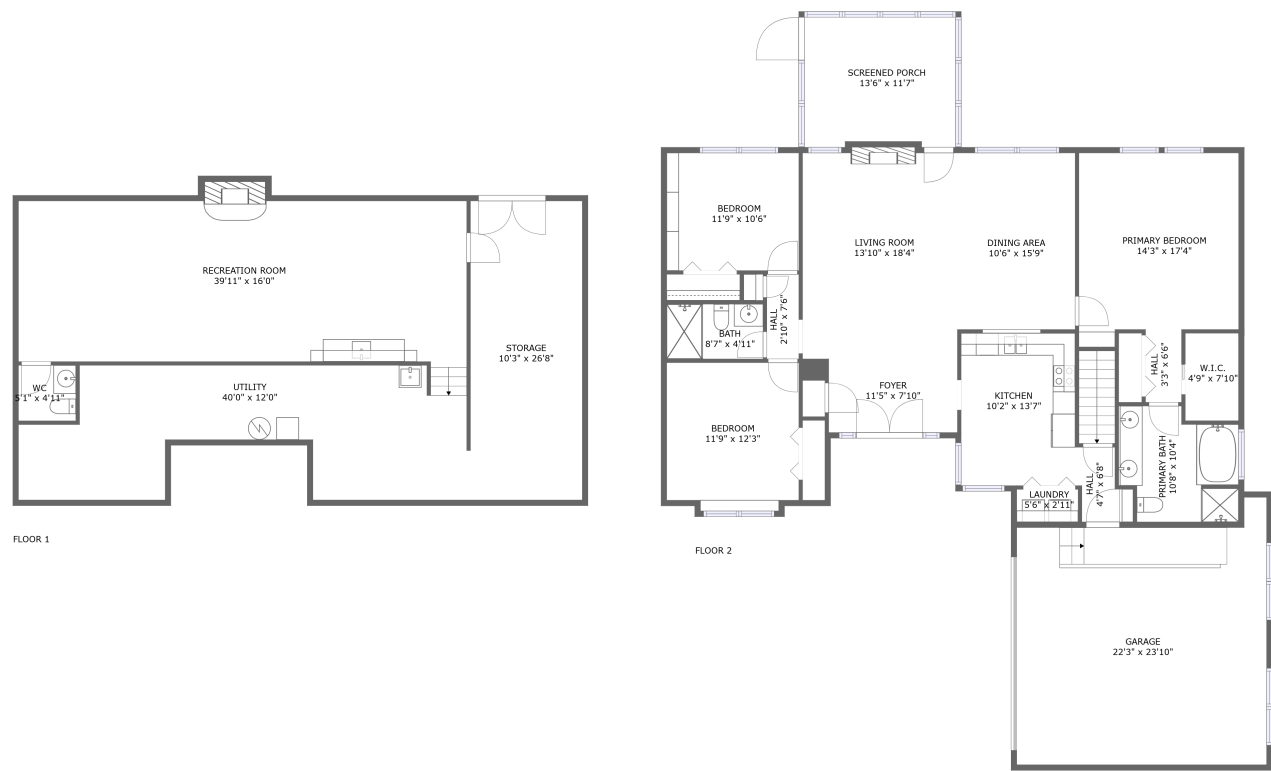


Home report

1930 Mcvitty Road, Salem, Virginia 24153, United States




Total Area: 2169 sq. ft

Below Ground: 621 sq. ft, Floor 2: 1548 sq. ft

Excluded: Utility 384 sq. ft, Storage 267 sq. ft, Fireplace 14 sq. ft, Garage 477 sq. ft, Screened porch 153 sq. ft, Walls: 223 sq. ft

Property summary

 2 Floors

 3 Bedrooms

 2 Bathrooms

Home report

1930 Mcvitty Road, Salem, Virginia 24153, United States



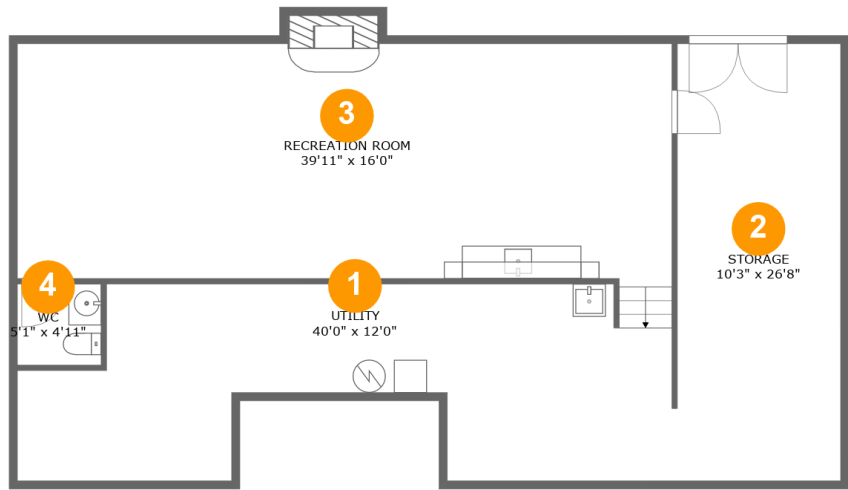
1
Half baths



1
Garages

Home report

1930 Mcvitty Road, Salem, Virginia 24153, United States



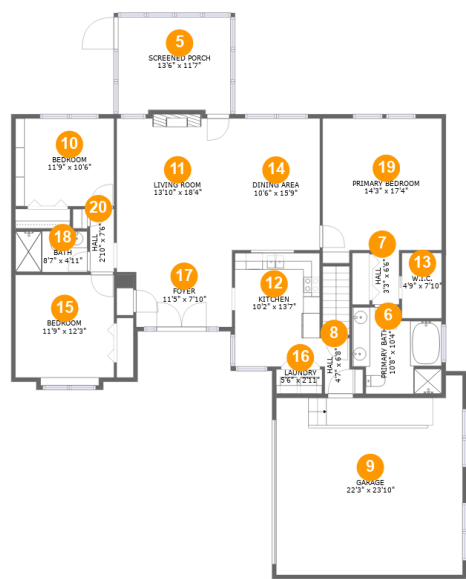
Room dimensions

Floor 1 Below ground Total:621sqft Excluded: 662sqft

| # | | Max Dimensions | sqft | Included |
|---|-----------------|----------------|------------|----------|
| 1 | Utility | 40'0" x 12'0" | 380 sq. ft | No |
| 2 | Storage | 10'3" x 26'8" | 267 sq. ft | No |
| 3 | Recreation Room | 39'11" x 16'0" | 582 sq. ft | Yes |
| 4 | WC | 5'1" x 4'11" | 25 sq. ft | Yes |

Home report

1930 Mcvitty Road, Salem, Virginia 24153, United States



Room dimensions

Floor 2

Total:1548sqft

Excluded: 633sqft

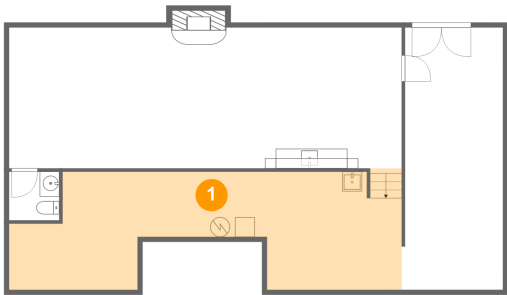
| # | | Max Dimensions | sqft | Included |
|----|----------------|----------------|------------|----------|
| 5 | Screened Porch | 13'6" x 11'7" | 153 sq. ft | No |
| 6 | Primary Bath | 10'8" x 10'4" | 96 sq. ft | Yes |
| 7 | Hall | 3'3" x 6'6" | 21 sq. ft | Yes |
| 8 | Hall | 4'7" x 6'8" | 26 sq. ft | Yes |
| 9 | Garage | 22'3" x 23'10" | 477 sq. ft | No |
| 10 | Bedroom | 11'9" x 10'6" | 124 sq. ft | Yes |
| 11 | Living Room | 13'10" x 18'4" | 242 sq. ft | Yes |
| 12 | Kitchen | 10'2" x 13'7" | 140 sq. ft | Yes |
| 13 | W.I.C. | 4'9" x 7'10" | 37 sq. ft | Yes |
| 14 | Dining Area | 10'6" x 15'9" | 165 sq. ft | Yes |
| 15 | Bedroom | 11'9" x 12'3" | 151 sq. ft | Yes |

Home report

1930 Mcvitty Road, Salem, Virginia 24153, United States

| # | | Max Dimensions | sqft | Included |
|----|-----------------|----------------|------------|----------|
| 16 | Laundry | 5'6" x 2'11" | 16 sq. ft | Yes |
| 17 | Foyer | 11'5" x 7'10" | 90 sq. ft | Yes |
| 18 | Bath | 8'7" x 4'11" | 42 sq. ft | Yes |
| 19 | Primary Bedroom | 14'3" x 17'4" | 229 sq. ft | Yes |
| 20 | Hall | 2'10" x 7'6" | 22 sq. ft | Yes |

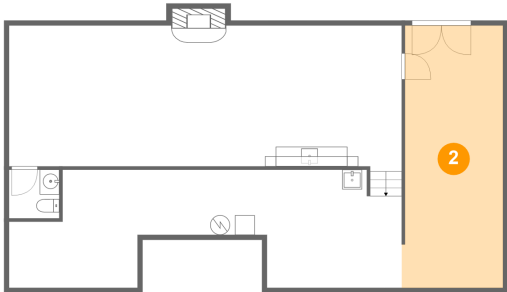
1 Floor 1 - Utility



Max Dimensions: 40'0" x 12'0"
Calculated Area: 380 sq. ft
Included: No

Heated: Yes
Finished: No
Enclosed: Yes
Contiguous: Yes
Permitted: Yes
Wet space: No
Addition: No
Conversion: No

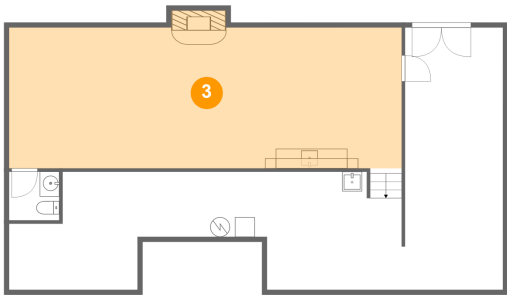
2 Floor 1 - Storage



Max Dimensions: 10'3" x 26'8"
Calculated Area: 267 sq. ft
Included: No

Heated: No
Finished: No
Enclosed: No
Contiguous: Yes
Permitted: Yes
Wet space: No
Addition: No
Conversion: No

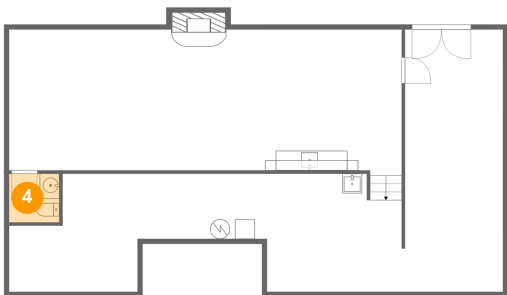
3 Floor 1 - Recreation Room



Max Dimensions: 39'11" x 16'0"
Calculated Area: 582 sq. ft
Included: No

Heated: Yes
Finished: Yes
Enclosed: Yes
Contiguous: No
Permitted: Yes
Wet space: No
Addition: No
Conversion: No

4 Floor 1 - WC



Max Dimensions: 5'1" x 4'11"
Calculated Area: 25 sq. ft
Included: No

Heated: Yes
Finished: Yes
Enclosed: Yes
Contiguous: No
Permitted: Yes
Wet space: Yes
Addition: No
Conversion: No

5 Floor 2 - Screened Porch



Max Dimensions: 13'6" x 11'7"
Calculated Area: 153 sq. ft
Included: No

Heated: No
Finished: Yes
Enclosed: No
Contiguous: Yes
Permitted: Yes
Wet space: No
Addition: No
Conversion: No

6 Floor 2 - Primary Bath



Max Dimensions: 10'8" x 10'4"
Calculated Area: 96 sq. ft
Included: Yes

Heated: Yes
Finished: Yes
Enclosed: Yes
Contiguous: Yes
Permitted: Yes
Wet space: Yes
Addition: No
Conversion: No

7 Floor 2 - Hall



Max Dimensions: 3'3" x 6'6"
Calculated Area: 21 sq. ft
Included: Yes

Heated: Yes
Finished: Yes
Enclosed: Yes
Contiguous: Yes
Permitted: Yes
Wet space: No
Addition: No
Conversion: No

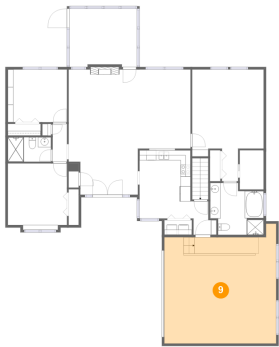
8 Floor 2 - Hall



Max Dimensions: 4'7" x 6'8"
Calculated Area: 26 sq. ft
Included: Yes

Heated: Yes
Finished: Yes
Enclosed: Yes
Contiguous: Yes
Permitted: Yes
Wet space: No
Addition: No
Conversion: No

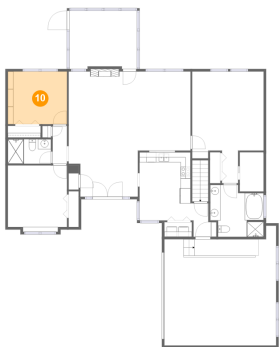
9 Floor 2 - Garage



Max Dimensions: 22'3" x 23'10"
Calculated Area: 477 sq. ft
Included: No

Heated: No
Finished: No
Enclosed: Yes
Contiguous: Yes
Permitted: Yes
Wet space: No
Addition: No
Conversion: No

10 Floor 2 - Bedroom



Max Dimensions: 11'9" x 10'6"
Calculated Area: 124 sq. ft
Included: Yes

Heated: Yes
Finished: Yes
Enclosed: Yes
Contiguous: Yes
Permitted: Yes
Wet space: No
Addition: No
Conversion: No

11 Floor 2 - Living Room



Max Dimensions: 13'10" x 18'4"
Calculated Area: 242 sq. ft
Included: Yes

Heated: Yes
Finished: Yes
Enclosed: Yes
Contiguous: Yes
Permitted: Yes
Wet space: No
Addition: No
Conversion: No

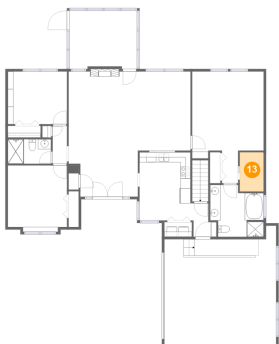
12 Floor 2 - Kitchen



Max Dimensions: 10'2" x 13'7"
Calculated Area: 140 sq. ft
Included: Yes

Heated: Yes
Finished: Yes
Enclosed: Yes
Contiguous: Yes
Permitted: Yes
Wet space: No
Addition: No
Conversion: No

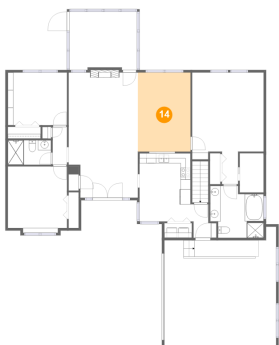
13 Floor 2 - W.I.C.



Max Dimensions: 4'9" x 7'10"
Calculated Area: 37 sq. ft
Included: Yes

Heated: Yes
Finished: Yes
Enclosed: Yes
Contiguous: Yes
Permitted: Yes
Wet space: No
Addition: No
Conversion: No

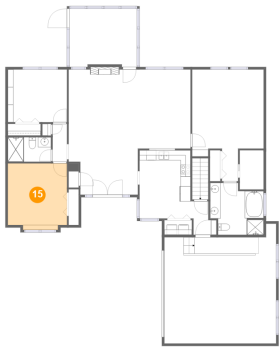
14 Floor 2 - Dining Area



Max Dimensions: 10'6" x 15'9"
Calculated Area: 165 sq. ft
Included: Yes

Heated: Yes
Finished: Yes
Enclosed: Yes
Contiguous: Yes
Permitted: Yes
Wet space: No
Addition: No
Conversion: No

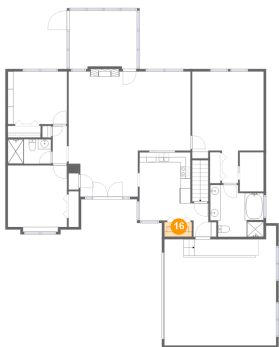
15 Floor 2 - Bedroom



Max Dimensions: 11'9" x 12'3"
Calculated Area: 151 sq. ft
Included: Yes

Heated: Yes
Finished: Yes
Enclosed: Yes
Contiguous: Yes
Permitted: Yes
Wet space: No
Addition: No
Conversion: No

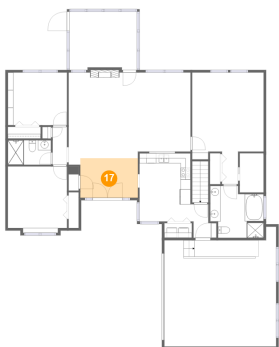
16 Floor 2 - Laundry



Max Dimensions: 5'6" x 2'11"
Calculated Area: 16 sq. ft
Included: Yes

Heated: Yes
Finished: Yes
Enclosed: Yes
Contiguous: Yes
Permitted: Yes
Wet space: No
Addition: No
Conversion: No

17 Floor 2 - Foyer



Max Dimensions: 11'5" x 7'10"
Calculated Area: 90 sq. ft
Included: Yes

Heated: Yes
Finished: Yes
Enclosed: Yes
Contiguous: Yes
Permitted: Yes
Wet space: No
Addition: No
Conversion: No

18 Floor 2 - Bath



Max Dimensions: 8'7" x 4'11"
Calculated Area: 42 sq. ft
Included: Yes

Heated: Yes
Finished: Yes
Enclosed: Yes
Contiguous: Yes
Permitted: Yes
Wet space: Yes
Addition: No
Conversion: No

19 Floor 2 - Primary Bedroom



Max Dimensions: 14'3" x 17'4"
Calculated Area: 229 sq. ft
Included: Yes

Heated: Yes
Finished: Yes
Enclosed: Yes
Contiguous: Yes
Permitted: Yes
Wet space: No
Addition: No
Conversion: No

20 Floor 2 - Hall



Max Dimensions: 2'10" x 7'6"
Calculated Area: 22 sq. ft
Included: Yes

Heated: Yes
Finished: Yes
Enclosed: Yes
Contiguous: Yes
Permitted: Yes
Wet space: No
Addition: No
Conversion: No