


1020 Marine Street, Edgewater Drive, Clearwater, Pinellas County, Florida, United States, 33755



Property summary


 **1** Garages

 **4** Bedrooms

 **4** Bathrooms

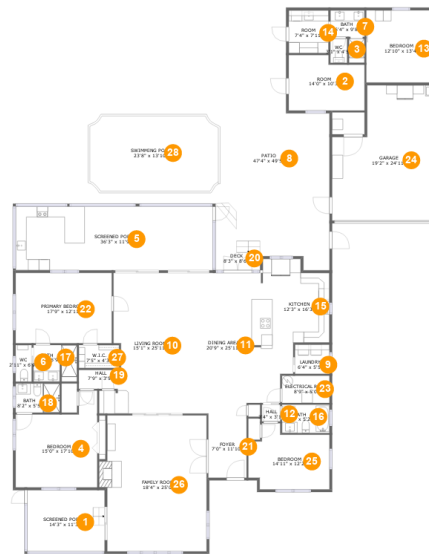
 **0** Half baths

 **1** Floors

 **2,917** Gross living area sqft

 **5,152** Total sqft

1020 Marine Street, Edgewater Drive, Clearwater, Pinellas County, Florida, United States, 33755



Room dimensions

Floor 1

Total sqft: 5152 Living area: 2917

#		Dimensions	sqft	Counted as living area
1	Outdoor	14'3" x 11'3"	161 sq. ft	No
2	Room	14'0" x 10'3"	131 sq. ft	No
3	Bath	3'1" x 4'5"	14 sq. ft	Yes
4	Bedroom	15'0" x 17'10"	217 sq. ft	Yes
5	Outdoor	36'3" x 11'9"	428 sq. ft	No
6	Bath	2'11" x 6'9"	20 sq. ft	Yes
7	Bath	6'4" x 9'8"	44 sq. ft	Yes
8	Outdoor	47'4" x 49'5"	1223 sq. ft	No
9	Utility	6'4" x 5'5"	34 sq. ft	Yes
10	Living Room	15'1" x 25'11"	314 sq. ft	Yes
11	Dining Room	20'9" x 25'11"	430 sq. ft	Yes

Scan captured on Thu, 21 Nov 2024 22:49:23 GMT

Information is calculated by Cubicasa technology deemed highly reliable but not guaranteed.

**1020 Marine Street, Edgewater Drive, Clearwater,
Pinellas County, Florida, United States, 33755**

#		Dimensions	sqft	Counted as living area
12	Hall	3'4" x 3'1"	10 sq. ft	Yes
13	Bedroom	12'10" x 13'4"	171 sq. ft	Yes
14	Room	7'4" x 7'11"	58 sq. ft	Yes
15	Kitchen	12'3" x 16'3"	181 sq. ft	Yes
16	Bath	8'9" x 5'2"	46 sq. ft	Yes
17	Bath	8'0" x 6'9"	53 sq. ft	Yes
18	Bath	8'2" x 5'5"	44 sq. ft	Yes
19	Hall	7'9" x 3'5"	27 sq. ft	Yes
20	Outdoor	8'3" x 8'6"	53 sq. ft	No
21	Entry	7'0" x 11'10"	83 sq. ft	Yes
22	Bedroom	17'9" x 12'11"	229 sq. ft	Yes
23	Room	8'9" x 5'0"	44 sq. ft	No
24	Garage	19'2" x 24'11"	416 sq. ft	No
25	Bedroom	14'11" x 12'2"	150 sq. ft	Yes
26	Living Room	18'4" x 25'0"	466 sq. ft	Yes
27	Cl	7'5" x 4'3"	32 sq. ft	Yes
28	Swimming Pool	23'8" x 13'10"	342 sq. ft	No

1020 Marine Street, Edgewater Drive, Clearwater,
Pinellas County, Florida, United States, 33755

1 Floor 1 - Outdoor



Dimensions: 14'3" x 11'3"
Area: 161 sq. ft
Counted as living area: No

Heated: No
Finished: Yes
Enclosed: No
Contiguous: Yes
Permitted: Yes
Wet space: No
Addition: No
Conversion: No

2 Floor 1 - Room



Dimensions: 14'0" x 10'3"
Area: 131 sq. ft
Counted as living area: No

Heated: Yes
Finished: Yes
Enclosed: Yes
Contiguous: No
Permitted: Yes
Wet space: No
Addition: No
Conversion: No

1020 Marine Street, Edgewater Drive, Clearwater,
Pinellas County, Florida, United States, 33755

3 Floor 1 - Bath



Dimensions: 3'1" x 4'5"
Area: 14 sq. ft
Counted as living area: Yes

Heated: Yes
Finished: Yes
Enclosed: Yes
Contiguous: Yes
Permitted: Yes
Wet space: Yes
Addition: No
Conversion: No

4 Floor 1 - Bedroom



Dimensions: 15'0" x 17'10"
Area: 217 sq. ft
Counted as living area: Yes

Heated: Yes
Finished: Yes
Enclosed: Yes
Contiguous: Yes
Permitted: Yes
Wet space: No
Addition: No
Conversion: No

5 Floor 1 - Outdoor



Dimensions: 36'3" x 11'9"
Area: 428 sq. ft
Counted as living area: No

Heated: No
Finished: Yes
Enclosed: No
Contiguous: Yes
Permitted: Yes
Wet space: No
Addition: No
Conversion: No

1020 Marine Street, Edgewater Drive, Clearwater,
Pinellas County, Florida, United States, 33755

6 Floor 1 - Bath



Dimensions: 2'11" x 6'9"
Area: 20 sq. ft
Counted as living area: Yes

Heated: Yes
Finished: Yes
Enclosed: Yes
Contiguous: Yes
Permitted: Yes
Wet space: Yes
Addition: No
Conversion: No

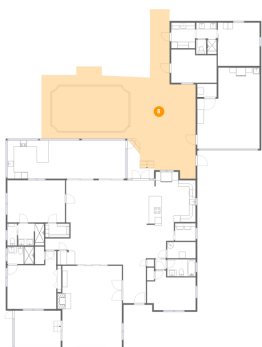
7 Floor 1 - Bath



Dimensions: 6'4" x 9'8"
Area: 44 sq. ft
Counted as living area: Yes

Heated: Yes
Finished: Yes
Enclosed: Yes
Contiguous: Yes
Permitted: Yes
Wet space: Yes
Addition: No
Conversion: No

8 Floor 1 - Outdoor



Dimensions: 47'4" x 49'5"
Area: 1223 sq. ft
Counted as living area: No

Heated: No
Finished: Yes
Enclosed: No
Contiguous: Yes
Permitted: Yes
Wet space: No
Addition: No
Conversion: No

1020 Marine Street, Edgewater Drive, Clearwater,
Pinellas County, Florida, United States, 33755

9 Floor 1 - Utility



Dimensions: 6'4" x 5'5"
Area: 34 sq. ft
Counted as living area: Yes

Heated: Yes
Finished: Yes
Enclosed: Yes
Contiguous: Yes
Permitted: Yes
Wet space: No
Addition: No
Conversion: No

10 Floor 1 - Living Room



Dimensions: 15'1" x 25'11"
Area: 314 sq. ft
Counted as living area: Yes

Heated: Yes
Finished: Yes
Enclosed: Yes
Contiguous: Yes
Permitted: Yes
Wet space: No
Addition: No
Conversion: No

11 Floor 1 - Dining Room



Dimensions: 20'9" x 25'11"
Area: 430 sq. ft
Counted as living area: Yes

Heated: Yes
Finished: Yes
Enclosed: Yes
Contiguous: Yes
Permitted: Yes
Wet space: No
Addition: No
Conversion: No

1020 Marine Street, Edgewater Drive, Clearwater,
Pinellas County, Florida, United States, 33755

12 Floor 1 - Hall



Dimensions: 3'4" x 3'1"
Area: 10 sq. ft
Counted as living area: Yes

Heated: Yes
Finished: Yes
Enclosed: Yes
Contiguous: Yes
Permitted: Yes
Wet space: No
Addition: No
Conversion: No

13 Floor 1 - Bedroom



Dimensions: 12'10" x 13'4"
Area: 171 sq. ft
Counted as living area: Yes

Heated: Yes
Finished: Yes
Enclosed: Yes
Contiguous: Yes
Permitted: Yes
Wet space: No
Addition: No
Conversion: No

14 Floor 1 - Room



Dimensions: 7'4" x 7'11"
Area: 58 sq. ft
Counted as living area: Yes

Heated: Yes
Finished: Yes
Enclosed: Yes
Contiguous: Yes
Permitted: Yes
Wet space: No
Addition: No
Conversion: No

1020 Marine Street, Edgewater Drive, Clearwater,
Pinellas County, Florida, United States, 33755

15 Floor 1 - Kitchen



Dimensions: 12'3" x 16'3"
Area: 181 sq. ft
Counted as living area: Yes

Heated: Yes
Finished: Yes
Enclosed: Yes
Contiguous: Yes
Permitted: Yes
Wet space: No
Addition: No
Conversion: No

16 Floor 1 - Bath



Dimensions: 8'9" x 5'2"
Area: 46 sq. ft
Counted as living area: Yes

Heated: Yes
Finished: Yes
Enclosed: Yes
Contiguous: Yes
Permitted: Yes
Wet space: Yes
Addition: No
Conversion: No

17 Floor 1 - Bath



Dimensions: 8'0" x 6'9"
Area: 53 sq. ft
Counted as living area: Yes

Heated: Yes
Finished: Yes
Enclosed: Yes
Contiguous: Yes
Permitted: Yes
Wet space: Yes
Addition: No
Conversion: No

1020 Marine Street, Edgewater Drive, Clearwater,
Pinellas County, Florida, United States, 33755

18 Floor 1 - Bath



Dimensions: 8'2" x 5'5"
Area: 44 sq. ft
Counted as living area: Yes

Heated: Yes
Finished: Yes
Enclosed: Yes
Contiguous: Yes
Permitted: Yes
Wet space: Yes
Addition: No
Conversion: No

19 Floor 1 - Hall



Dimensions: 7'9" x 3'5"
Area: 27 sq. ft
Counted as living area: Yes

Heated: Yes
Finished: Yes
Enclosed: Yes
Contiguous: Yes
Permitted: Yes
Wet space: No
Addition: No
Conversion: No

20 Floor 1 - Outdoor



Dimensions: 8'3" x 8'6"
Area: 53 sq. ft
Counted as living area: No

Heated: No
Finished: Yes
Enclosed: No
Contiguous: Yes
Permitted: Yes
Wet space: No
Addition: No
Conversion: No

1020 Marine Street, Edgewater Drive, Clearwater,
Pinellas County, Florida, United States, 33755

21 Floor 1 - Entry



Dimensions: 7'0" x 11'10"
Area: 83 sq. ft
Counted as living area: Yes

Heated: Yes
Finished: Yes
Enclosed: Yes
Contiguous: Yes
Permitted: Yes
Wet space: No
Addition: No
Conversion: No

22 Floor 1 - Bedroom



Dimensions: 17'9" x 12'11"
Area: 229 sq. ft
Counted as living area: Yes

Heated: Yes
Finished: Yes
Enclosed: Yes
Contiguous: Yes
Permitted: Yes
Wet space: No
Addition: No
Conversion: No

23 Floor 1 - Room



Dimensions: 8'9" x 5'0"
Area: 44 sq. ft
Counted as living area: No

Heated: No
Finished: No
Enclosed: Yes
Contiguous: Yes
Permitted: Yes
Wet space: No
Addition: No
Conversion: No

1020 Marine Street, Edgewater Drive, Clearwater,
Pinellas County, Florida, United States, 33755

24 Floor 1 - Garage



Dimensions: 19'2" x 24'11"
Area: 416 sq. ft
Counted as living area: No

Heated: No
Finished: No
Enclosed: Yes
Contiguous: Yes
Permitted: Yes
Wet space: No
Addition: No
Conversion: No

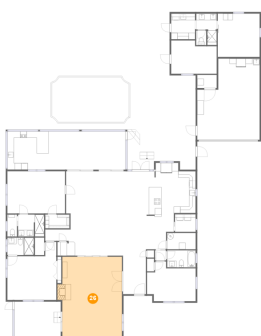
25 Floor 1 - Bedroom



Dimensions: 14'11" x 12'2"
Area: 150 sq. ft
Counted as living area: Yes

Heated: Yes
Finished: Yes
Enclosed: Yes
Contiguous: Yes
Permitted: Yes
Wet space: No
Addition: No
Conversion: No

26 Floor 1 - Living Room



Dimensions: 18'4" x 25'0"
Area: 466 sq. ft
Counted as living area: Yes

Heated: Yes
Finished: Yes
Enclosed: Yes
Contiguous: Yes
Permitted: Yes
Wet space: No
Addition: No
Conversion: No

**1020 Marine Street, Edgewater Drive, Clearwater,
Pinellas County, Florida, United States, 33755**

27 Floor 1 - Cl



Dimensions: 7'5" x 4'3"
Area: 32 sq. ft
Counted as living area: Yes

Heated: Yes
Finished: Yes
Enclosed: Yes
Contiguous: Yes
Permitted: Yes
Wet space: No
Addition: No
Conversion: No

28 Floor 1 - Swimming Pool



Dimensions: 23'8" x 13'10"
Area: 342 sq. ft
Counted as living area: No

Heated: No
Finished: No
Enclosed: No
Contiguous: Yes
Permitted: No
Wet space: No
Addition: No
Conversion: No