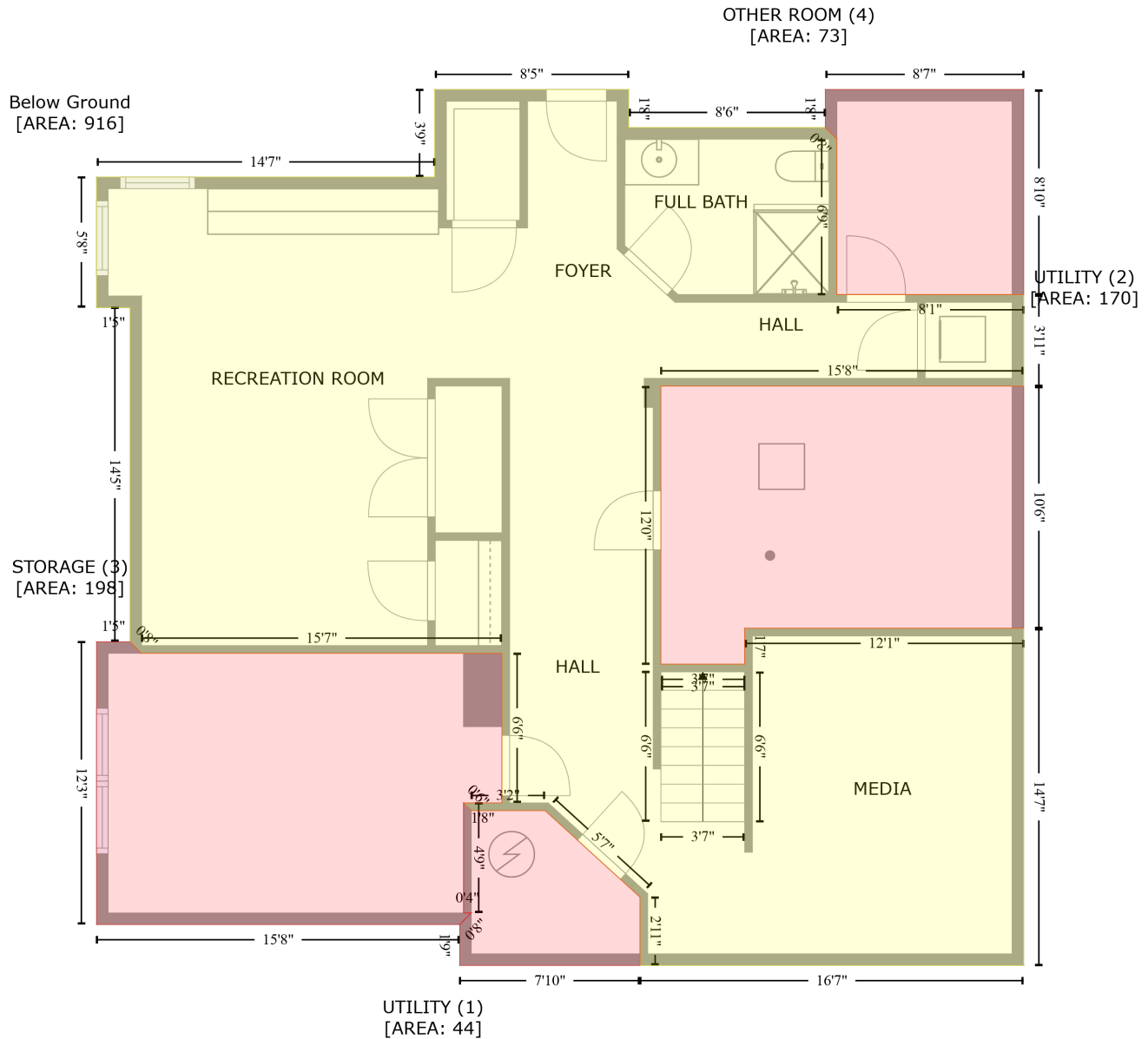


189 Saddle Hill Road, Hopkinton, Middlesex County, Massachusetts, United States, 01748

Gross Living Area: 3366 sq. ft



Space

Area (sq. ft)

Calculation Coordinate Polygon Area Algorithm using inches

Below Ground
(Living area)

916

$$\begin{aligned}
 & -((278.6 + 278.6) * (-6 - 13.7) + (278.6 + 380.6) * (13.7 - 13.7) + (380.6 + 386.6) * (13.7 - 19.7) + \\
 & (386.6 + 386.6) * (19.7 - 100.4) + (386.6 + 483.6) * (100.4 - 100.4) + (483.6 + 483.6) * (100.4 - \\
 & 147.9) + (483.6 + 295.3) * (147.9 - 147.9) + (295.3 + 295.3) * (147.9 - 292.2) + (295.3 + 338.8) * \\
 & (292.2 - 292.2) + (338.8 + 338.8) * (292.2 - 273.6) + (338.8 + 483.6) * (273.6 - 273.6) + (483.6 + \\
 & 483.6) * (273.6 - 448.5) + (483.6 + 284.5) * (448.5 - 448.5) + (284.5 + 284.5) * (448.5 - 413.1) + \\
 & (284.5 + 235.4) * (413.1 - 368.2) + (235.4 + 197) * (368.2 - 368.2) + (197 + 193) * (368.2 - 364.2) \\
 & + (193 + 212.9) * (364.2 - 364.2) + (212.9 + 212.9) * (364.2 - 286.6) + (212.9 + 26) * (286.6 -
 \end{aligned}$$

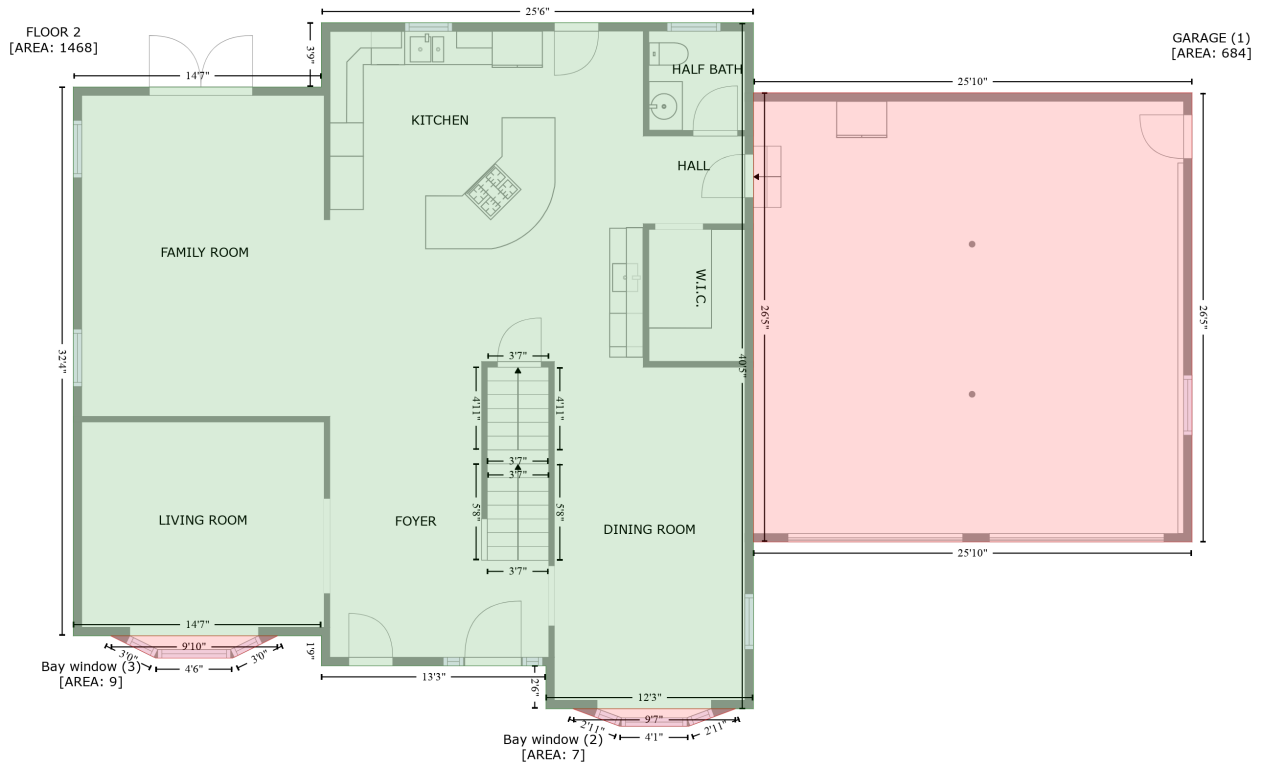
189 Saddle Hill Road, Hopkinton, Middlesex County, Massachusetts, United States, 01748

Gross Living Area: 3366 sq. ft

| Space | Area (sq. ft) | Calculation <small>Coordinate Polygon Area Algorithm using inches</small> |
|---------------------------------|---------------|--|
| | | $286.6 + (26 + 20) * (286.6 - 280.6) + (20 + 20) * (280.6 - 107.1) + (20 + 2.6) * (107.1 - 107.1) + (2.6 + 2.6) * (107.1 - 39.4) + (2.6 + 178) * (39.4 - 39.4) + (178 + 178) * (39.4 - -6) + (178 + 278.6) * (-6 - -6) * 0.5 * 0.00694$ |
| UTILITY (Non-living area) | 44 | $-((193 + 197) * (364.2 - 368.2) + (197 + 235.4) * (368.2 - 368.2) + (235.4 + 284.5) * (368.2 - 413.1) + (284.5 + 284.5) * (413.1 - 448.5) + (284.5 + 191) * (448.5 - 448.5) + (191 + 191) * (448.5 - 427.3) + (191 + 197) * (427.3 - 421.3) + (197 + 193) * (421.3 - 421.3) + (193 + 193) * (421.3 - 364.2)) * 0.5 * 0.00694$ |
| UTILITY (Non-living area) | 170 | $-((483.6 + 483.6) * (147.9 - 273.6) + (483.6 + 338.8) * (273.6 - 273.6) + (338.8 + 338.8) * (273.6 - 292.2) + (338.8 + 295.3) * (292.2 - 292.2) + (295.3 + 295.3) * (292.2 - 147.9) + (295.3 + 483.6) * (147.9 - 147.9)) * 0.5 * 0.00694$ |
| STORAGE (Non-living area) | 198 | $-((20 + 26) * (280.6 - 286.6) + (26 + 212.9) * (286.6 - 286.6) + (212.9 + 212.9) * (286.6 - 364.2) + (212.9 + 193) * (364.2 - 364.2) + (193 + 193) * (364.2 - 421.3) + (193 + 197) * (421.3 - 421.3) + (197 + 191) * (421.3 - 427.3) + (191 + 2.6) * (427.3 - 427.3) + (2.6 + 2.6) * (427.3 - 280.6) + (2.6 + 20) * (280.6 - 280.6)) * 0.5 * 0.00694$ |
| OTHER ROOM (Non-living area) | 73 | $-((483.6 + 483.6) * (-6 - 100.4) + (483.6 + 386.6) * (100.4 - 100.4) + (386.6 + 386.6) * (100.4 - 19.7) + (386.6 + 380.6) * (19.7 - 13.7) + (380.6 + 380.6) * (13.7 - -6) + (380.6 + 483.6) * (-6 - -6)) * 0.5 * 0.00694$ |

189 Saddle Hill Road, Hopkinton, Middlesex County, Massachusetts, United States, 01748

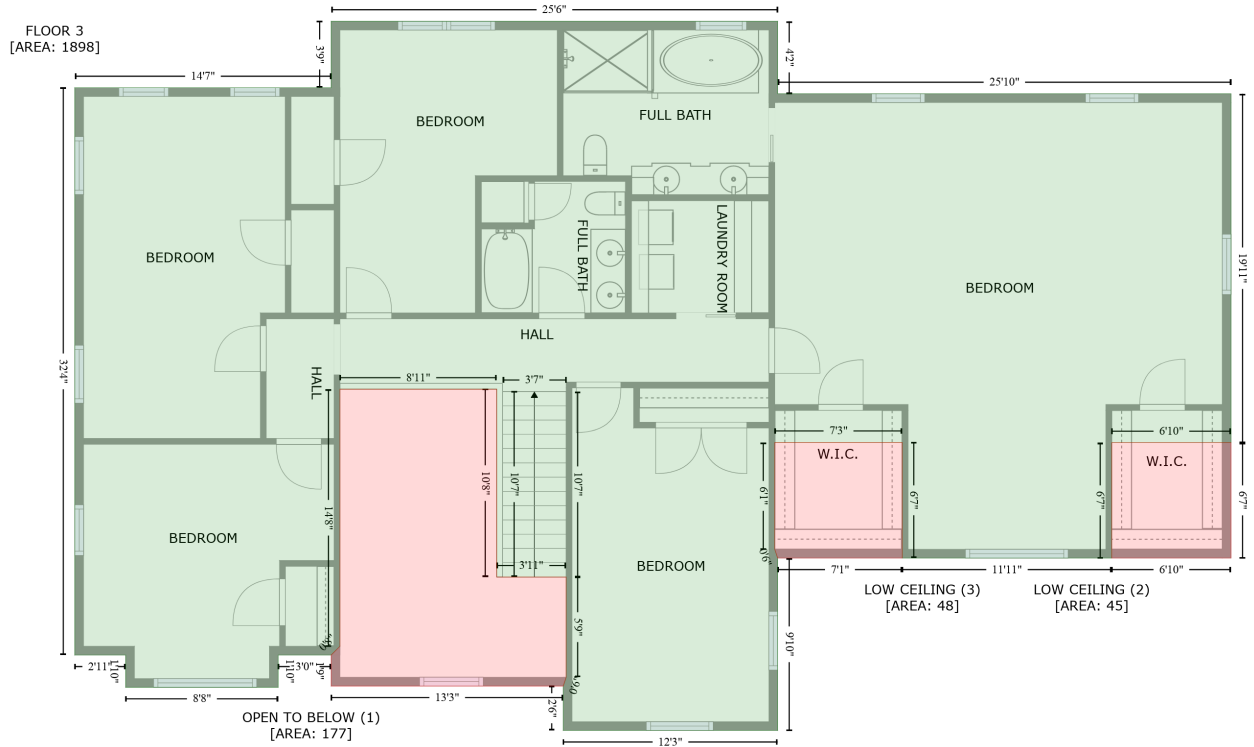
Gross Living Area: 3366 sq. ft



| Space | Area (sq. ft) | Calculation |
|---------------------------------|---------------|---|
| FLOOR 2 (Living area) | 1468 | $-\left(\left(483.6 + 483.6\right) * \left(-6 - 478.9\right) + \left(483.6 + 336.8\right) * \left(478.9 - 478.9\right) + \left(336.8 + 336.8\right) * \left(478.9 - 448.5\right) + \left(336.8 + 178\right) * \left(448.5 - 448.5\right) + \left(178 + 178\right) * \left(448.5 - 427.3\right) + \left(178 + 2.6\right) * \left(427.3 - 427.3\right) + \left(2.6 + 2.6\right) * \left(427.3 - 39.4\right) + \left(2.6 + 178\right) * \left(39.4 - 39.4\right) + \left(178 + 178\right) * \left(39.4 - -6\right) + \left(178 + 483.6\right) * \left(-6 - -6\right)\right) * 0.5 * 0.00694$ |
| GARAGE (Non-living area) | 684 | $-\left(\left(793.7 + 793.7\right) * \left(43.5 - 361\right) + \left(793.7 + 483.6\right) * \left(361 - 361\right) + \left(483.6 + 483.6\right) * \left(361 - 43.5\right) + \left(483.6 + 793.7\right) * \left(43.5 - 43.5\right)\right) * 0.5 * 0.00694$ |
| Bay window (Non-living area) | 7 | $-\left(\left(470.9 + 437.7\right) * \left(478.9 - 491.3\right) + \left(437.7 + 389.1\right) * \left(491.3 - 491.3\right) + \left(389.1 + 355.9\right) * \left(491.3 - 478.9\right) + \left(355.9 + 470.9\right) * \left(478.9 - 478.9\right)\right) * 0.5 * 0.00694$ |
| Bay window (Non-living area) | 9 | $-\left(\left(147.1 + 115.2\right) * \left(427.3 - 443.1\right) + \left(115.2 + 60.9\right) * \left(443.1 - 443.1\right) + \left(60.9 + 29\right) * \left(443.1 - 427.3\right) + \left(29 + 147.1\right) * \left(427.3 - 427.3\right)\right) * 0.5 * 0.00694$ |

189 Saddle Hill Road, Hopkinton, Middlesex County, Massachusetts, United States, 01748

Gross Living Area: 3366 sq. ft



| Space | Area (sq. ft) | Calculation |
|------------------------------------|---------------|--|
| FLOOR 3 (Living area) | 1898 | Coordinate Polygon Area Algorithm using inches $-((483.6 + 483.6) * (-6 - 43.5) + (483.6 + 793.7) * (43.5 - 43.5) + (793.7 + 793.7) * (43.5 - 282.1) + (793.7 + 712.1) * (282.1 - 282.1) + (712.1 + 712.1) * (282.1 - 361) + (712.1 + 568.8) * (361 - 361) + (568.8 + 568.8) * (361 - 282) + (568.8 + 481.6) * (282 - 282) + (481.6 + 481.6) * (282 - 355) + (481.6 + 483.6) * (355 - 361) + (483.6 + 483.6) * (361 - 478.9) + (483.6 + 336.8) * (478.9 - 478.9) + (336.8 + 336.8) * (478.9 - 448.5) + (336.8 + 338.8) * (448.5 - 442.5) + (338.8 + 338.8) * (442.5 - 374) + (338.8 + 291.3) * (374 - 374) + (291.3 + 291.3) * (374 - 245.6) + (291.3 + 184) * (245.6 - 245.6) + (184 + 184) * (245.6 - 421.3) + (184 + 178) * (421.3 - 427.3) + (178 + 141.8) * (427.3 - 427.3) + (141.8 + 141.8) * (427.3 - 449.4) + (141.8 + 37.4) * (449.4 - 449.4) + (37.4 + 37.4) * (449.4 - 427.3) + (37.4 + 2.6) * (427.3 - 427.3) + (2.6 + 2.6) * (427.3 - 39.4) + (2.6 + 178) * (39.4 - 39.4) + (178 + 178) * (39.4 - -6) + (178 + 483.6) * (-6 - -6)) * 0.5 * 0.00694$ |
| OPEN TO BELOW (Non-living area) | 177 | $-((291.3 + 291.3) * (245.6 - 374) + (291.3 + 338.8) * (374 - 374) + (338.8 + 338.8) * (374 - 442.5) + (338.8 + 336.8) * (442.5 - 448.5) + (336.8 + 178) * (448.5 - 448.5) + (178 + 178) * (448.5 - 427.3) + (178 + 184) * (427.3 - 421.3) + (184 + 184) * (421.3 - 245.6) + (184 + 291.3) * (245.6 - 245.6)) * 0.5 * 0.00694$ |
| LOW CEILING (Non-living area) | 45 | $-((793.7 + 793.7) * (282.1 - 361) + (793.7 + 712.1) * (361 - 361) + (712.1 + 712.1) * (361 - 282.1) + (712.1 + 793.7) * (282.1 - 282.1)) * 0.5 * 0.00694$ |
| LOW CEILING (Non-living area) | 48 | $-((568.8 + 568.8) * (282 - 361) + (568.8 + 483.6) * (361 - 361) + (483.6 + 481.6) * (361 - 355) + (481.6 + 481.6) * (355 - 282) + (481.6 + 568.8) * (282 - 282)) * 0.5 * 0.00694$ |