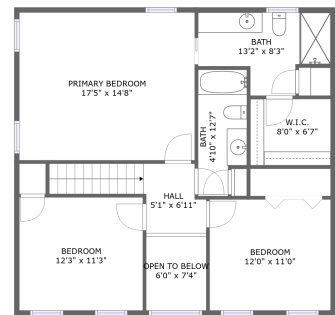
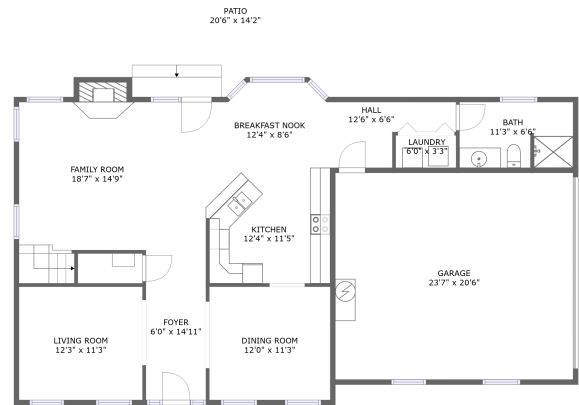


Home report

100 Ridge Mt Drive, Boones Mill, Franklin County, Virginia,
United States, 24065





UPPER LEVEL





ENTRY LEVEL

Property summary


 **1** Garages


 **3** Bedrooms

 **3** Bathrooms

 **0** Half baths

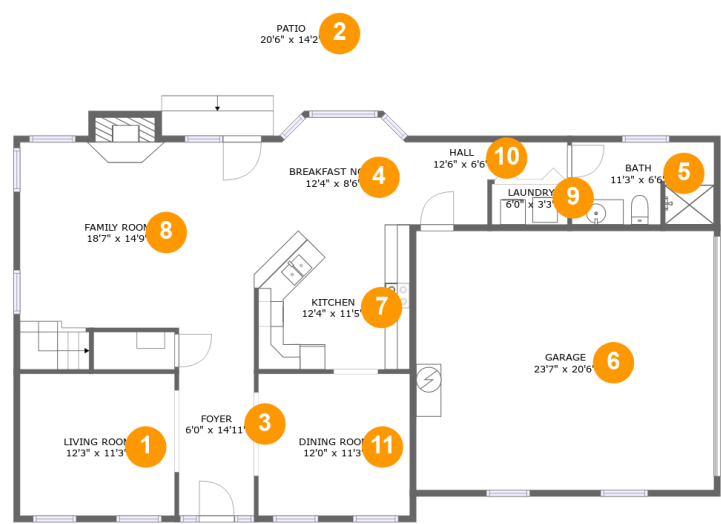
 **2** Floors

 **2,103** Gross living area sqft

 **2,945** Total sqft

Home report

100 Ridge Mt Drive, Boones Mill, Franklin County, Virginia,
United States, 24065



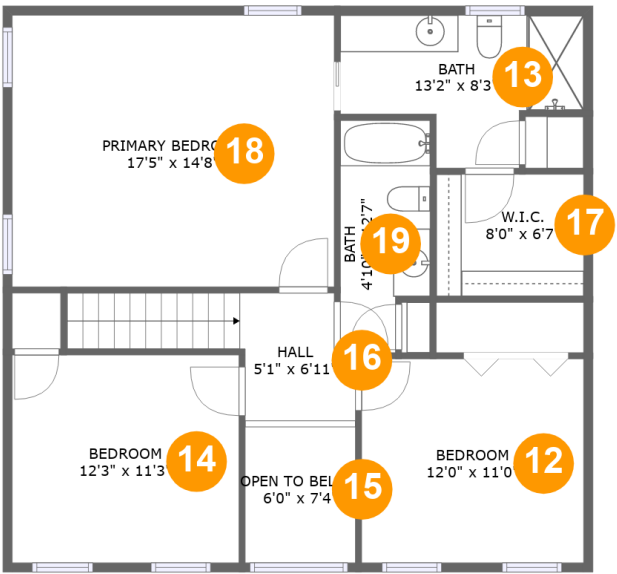
Room dimensions

Floor 1 Total sqft: 1969 Living area: 1174

#		Dimensions	sqft	Counted as living area
1	Living Room	12'3" x 11'3"	138 sq. ft	Yes
2	Patio	20'6" x 14'2"	277 sq. ft	No
3	Foyer	6'0" x 14'11"	89 sq. ft	Yes
4	Breakfast Nook	12'4" x 8'6"	96 sq. ft	Yes
5	Bath	11'3" x 6'6"	73 sq. ft	Yes
6	Garage	23'7" x 20'6"	485 sq. ft	No
7	Kitchen	12'4" x 11'5"	139 sq. ft	Yes
8	Family Room	18'7" x 14'9"	301 sq. ft	Yes
9	Laundry	6'0" x 3'3"	19 sq. ft	Yes
10	Hall	12'6" x 6'6"	59 sq. ft	Yes
11	Dining Room	12'0" x 11'3"	135 sq. ft	Yes

Home report

100 Ridge Mt Drive, Boones Mill, Franklin County, Virginia,
United States, 24065

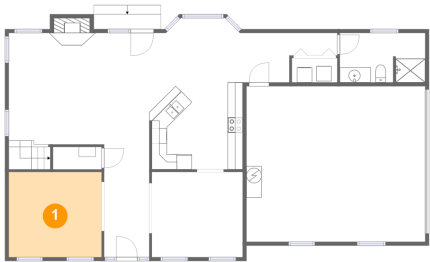


Room dimensions

Floor 2 Total sqft: 976 Living area: 929

#		Dimensions	sqft	Counted as living area
12	Bedroom	12'0" x 11'0"	132 sq. ft	Yes
13	Bath	13'2" x 8'3"	83 sq. ft	Yes
14	Bedroom	12'3" x 11'3"	138 sq. ft	Yes
15	Open To Below	6'0" x 7'4"	44 sq. ft	No
16	Hall	5'1" x 6'11"	68 sq. ft	Yes
17	W.I.C.	8'0" x 6'7"	53 sq. ft	Yes
18	Primary Bedroom	17'5" x 14'8"	256 sq. ft	Yes
19	Bath	4'10" x 12'7"	55 sq. ft	Yes

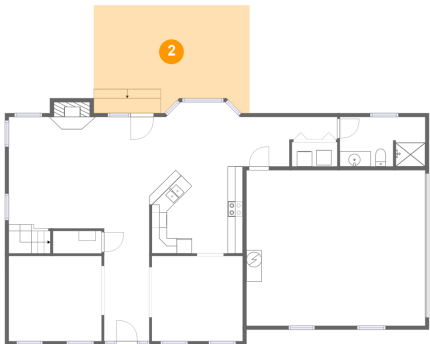
1 Floor 1 - Living Room



Dimensions: 12'3" x 11'3"
Area: 138 sq. ft
Counted as living area: Yes

Heated: Yes
Finished: Yes
Enclosed: Yes
Contiguous: Yes
Permitted: Yes
Wet space: No
Addition: No
Conversion: No

2 Floor 1 - Patio



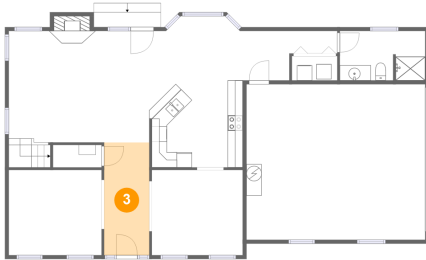
Dimensions: 20'6" x 14'2"
Area: 277 sq. ft
Counted as living area: No

Heated: No
Finished: Yes
Enclosed: No
Contiguous: Yes
Permitted: Yes
Wet space: No
Addition: No
Conversion: No

Home report

100 Ridge Mt Drive, Boones Mill, Franklin County, Virginia,
United States, 24065

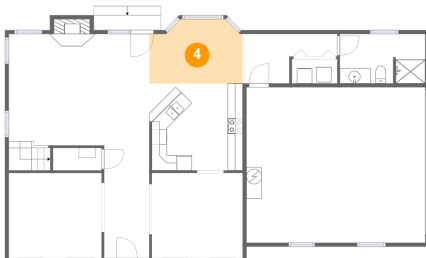
3 Floor 1 - Foyer



Dimensions: 6'0" x 14'11"
Area: 89 sq. ft
Counted as living area: Yes

Heated: Yes
Finished: Yes
Enclosed: Yes
Contiguous: Yes
Permitted: Yes
Wet space: No
Addition: No
Conversion: No

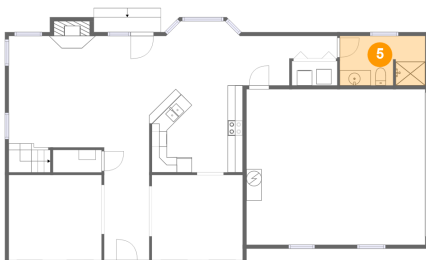
4 Floor 1 - Breakfast Nook



Dimensions: 12'4" x 8'6"
Area: 96 sq. ft
Counted as living area: Yes

Heated: Yes
Finished: Yes
Enclosed: Yes
Contiguous: Yes
Permitted: Yes
Wet space: No
Addition: No
Conversion: No

5 Floor 1 - Bath



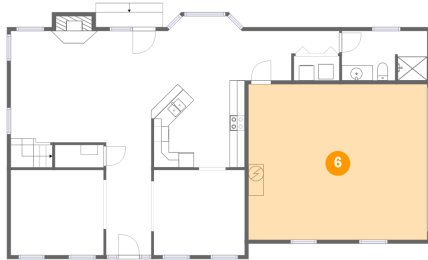
Dimensions: 11'3" x 6'6"
Area: 73 sq. ft
Counted as living area: Yes

Heated: Yes
Finished: Yes
Enclosed: Yes
Contiguous: Yes
Permitted: Yes
Wet space: Yes
Addition: No
Conversion: No

Home report

100 Ridge Mt Drive, Boones Mill, Franklin County, Virginia,
United States, 24065

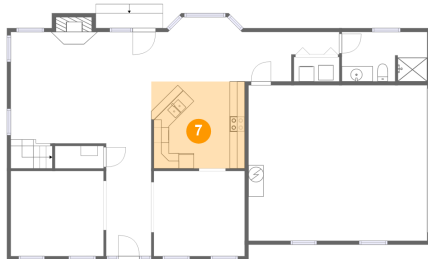
6 Floor 1 - Garage



Dimensions: 23'7" x 20'6"
Area: 485 sq. ft
Counted as living area: No

Heated: No
Finished: No
Enclosed: Yes
Contiguous: Yes
Permitted: Yes
Wet space: No
Addition: No
Conversion: No

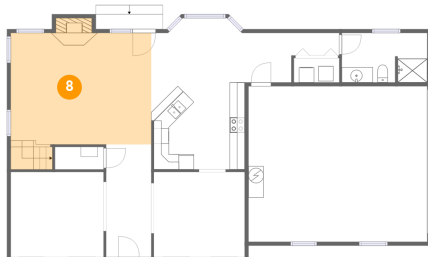
7 Floor 1 - Kitchen



Dimensions: 12'4" x 11'5"
Area: 139 sq. ft
Counted as living area: Yes

Heated: Yes
Finished: Yes
Enclosed: Yes
Contiguous: Yes
Permitted: Yes
Wet space: No
Addition: No
Conversion: No

8 Floor 1 - Family Room



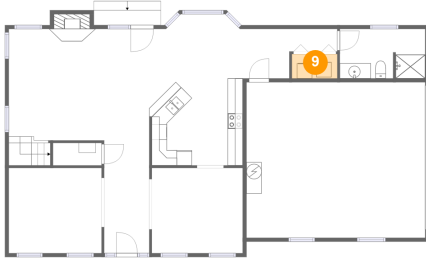
Dimensions: 18'7" x 14'9"
Area: 301 sq. ft
Counted as living area: Yes

Heated: Yes
Finished: Yes
Enclosed: Yes
Contiguous: Yes
Permitted: Yes
Wet space: No
Addition: No
Conversion: No

Home report

100 Ridge Mt Drive, Boones Mill, Franklin County, Virginia,
United States, 24065

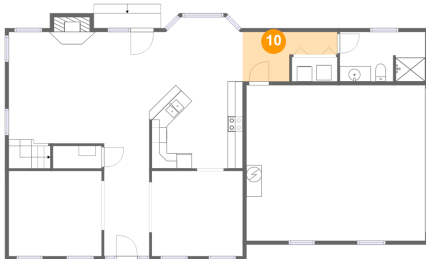
9 Floor 1 - Laundry



Dimensions: 6'0" x 3'3"
Area: 19 sq. ft
Counted as living area: Yes

Heated: Yes
Finished: Yes
Enclosed: Yes
Contiguous: Yes
Permitted: Yes
Wet space: No
Addition: No
Conversion: No

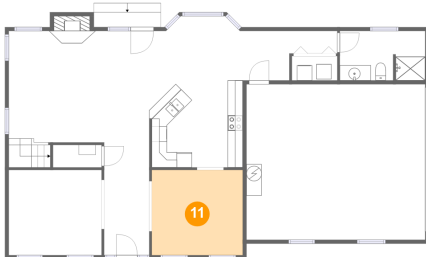
10 Floor 1 - Hall



Dimensions: 12'6" x 6'6"
Area: 59 sq. ft
Counted as living area: Yes

Heated: Yes
Finished: Yes
Enclosed: Yes
Contiguous: Yes
Permitted: Yes
Wet space: No
Addition: No
Conversion: No

11 Floor 1 - Dining Room

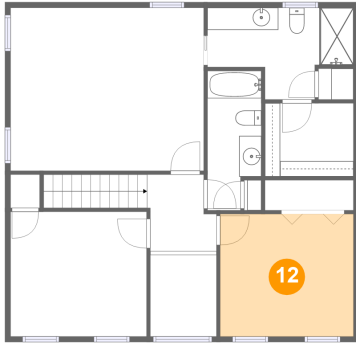


Dimensions: 12'0" x 11'3"
Area: 135 sq. ft
Counted as living area: Yes

Heated: Yes
Finished: Yes
Enclosed: Yes
Contiguous: Yes
Permitted: Yes
Wet space: No
Addition: No
Conversion: No

100 Ridge Mt Drive, Boones Mill, Franklin County, Virginia,
United States, 24065

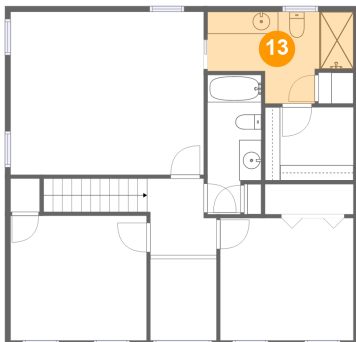
12 Floor 2 - Bedroom



Dimensions: 12'0" x 11'0"
Area: 132 sq. ft
Counted as living area: Yes

Heated: Yes
Finished: Yes
Enclosed: Yes
Contiguous: Yes
Permitted: Yes
Wet space: No
Addition: No
Conversion: No

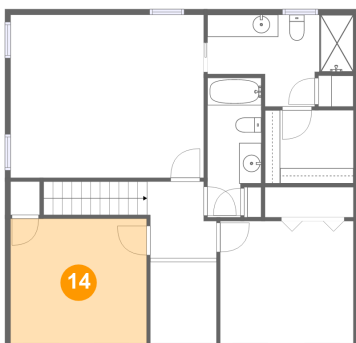
13 Floor 2 - Bath



Dimensions: 13'2" x 8'3"
Area: 83 sq. ft
Counted as living area: Yes

Heated: Yes
Finished: Yes
Enclosed: Yes
Contiguous: Yes
Permitted: Yes
Wet space: Yes
Addition: No
Conversion: No

14 Floor 2 - Bedroom

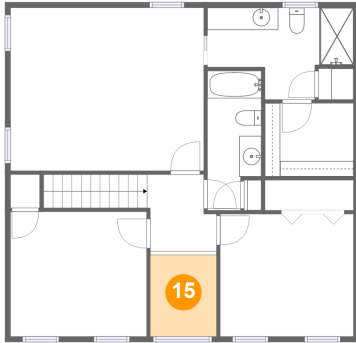


Dimensions: 12'3" x 11'3"
Area: 138 sq. ft
Counted as living area: Yes

Heated: Yes
Finished: Yes
Enclosed: Yes
Contiguous: Yes
Permitted: Yes
Wet space: No
Addition: No
Conversion: No

100 Ridge Mt Drive, Boones Mill, Franklin County, Virginia,
United States, 24065

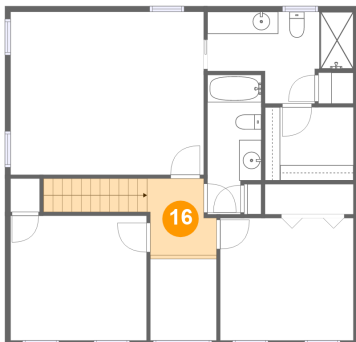
15 Floor 2 - Open To Below



Dimensions: 6'0" x 7'4"
Area: 44 sq. ft
Counted as living area: No

Heated: No
Finished: No
Enclosed: No
Contiguous: Yes
Permitted: No
Wet space: No
Addition: No
Conversion: No

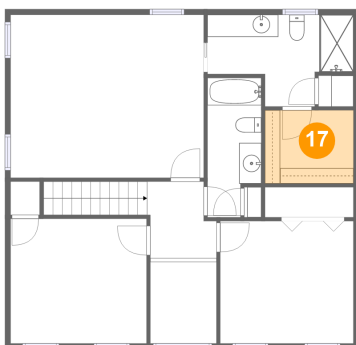
16 Floor 2 - Hall



Dimensions: 5'1" x 6'11"
Area: 68 sq. ft
Counted as living area: Yes

Heated: Yes
Finished: Yes
Enclosed: Yes
Contiguous: Yes
Permitted: Yes
Wet space: No
Addition: No
Conversion: No

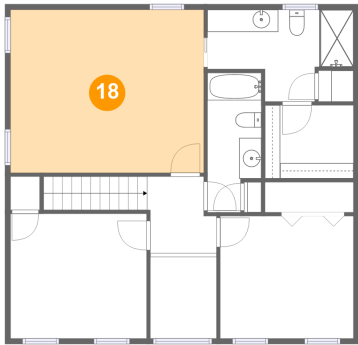
17 Floor 2 - W.I.C.



Dimensions: 8'0" x 6'7"
Area: 53 sq. ft
Counted as living area: Yes

Heated: Yes
Finished: Yes
Enclosed: Yes
Contiguous: Yes
Permitted: Yes
Wet space: No
Addition: No
Conversion: No

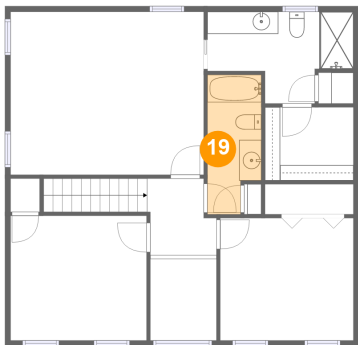
18 Floor 2 - Primary Bedroom



Dimensions: 17'5" x 14'8"
Area: 256 sq. ft
Counted as living area: Yes

Heated: Yes
Finished: Yes
Enclosed: Yes
Contiguous: Yes
Permitted: Yes
Wet space: No
Addition: No
Conversion: No

19 Floor 2 - Bath



Dimensions: 4'10" x 12'7"
Area: 55 sq. ft
Counted as living area: Yes

Heated: Yes
Finished: Yes
Enclosed: Yes
Contiguous: Yes
Permitted: Yes
Wet space: Yes
Addition: No
Conversion: No