

Home report

809 Elm Avenue Southeast, Belmont, Roanoke, Roanoke city, Virginia, United States, 24013



Total Area: 2355 sq. ft

Below Ground: 141 sq. ft, Floor 2: 1154 sq. ft, Floor 3: 1060 sq. ft, Floor 4: 0 sq. ft
Excluded: Low ceiling 1109 sq. ft, Basement 460 sq. ft, Porch 285 sq. ft, Patio 128 sq. ft, Attic 562 sq. ft, Walls: 289 sq. ft

Property summary

 **4** Floors

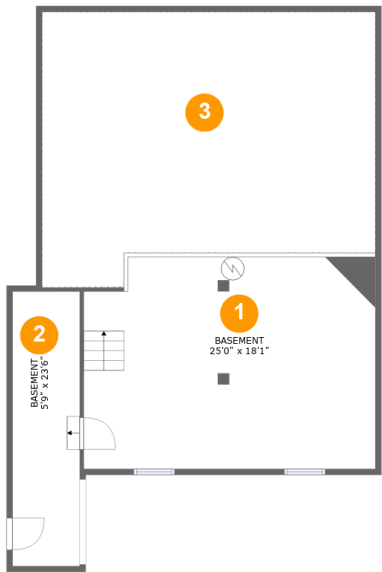
 **4** Bedrooms

 **2** Bathrooms

 **1** Half baths

Home report

809 Elm Avenue Southeast, Belmont, Roanoke, Roanoke city,
Virginia, United States, 24013



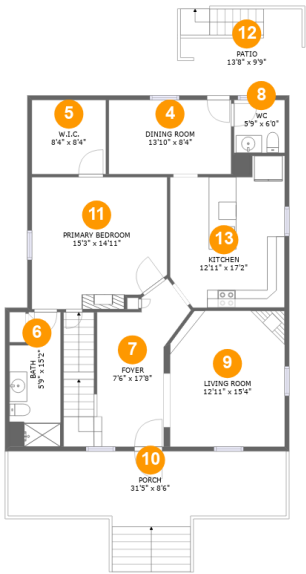
Room dimensions

Floor 1 Below ground Total:141sqft Excluded: 1071sqft

#		Max Dimensions	sqft	Included
1	Basement	25'0" x 18'1"	450 sq. ft	No
2	Basement	5'9" x 23'6"	135 sq. ft	Yes
3	Crawl Space	28'7" x 23'7"	609 sq. ft	No

Home report

809 Elm Avenue Southeast, Belmont, Roanoke, Roanoke city,
Virginia, United States, 24013



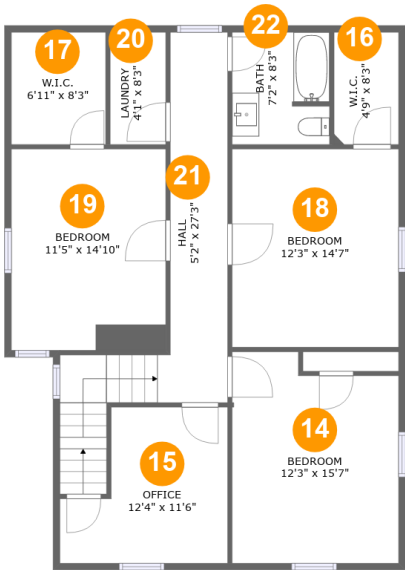
Room dimensions

Floor 2 Total:1154sqft Excluded: 413sqft

#		Max Dimensions	sqft	Included
4	Dining Room	13'10" x 8'4"	115 sq. ft	Yes
5	W.I.C.	8'4" x 8'4"	70 sq. ft	Yes
6	Bath	5'9" x 15'2"	79 sq. ft	Yes
7	Foyer	7'6" x 17'8"	188 sq. ft	Yes
8	WC	5'9" x 6'0"	34 sq. ft	Yes
9	Living Room	12'11" x 15'4"	194 sq. ft	Yes
10	Porch	31'5" x 8'6"	285 sq. ft	No
11	Primary Bedroom	15'3" x 14'11"	216 sq. ft	Yes
12	Patio	13'8" x 9'9"	128 sq. ft	No
13	Kitchen	12'11" x 17'2"	195 sq. ft	Yes

Home report

809 Elm Avenue Southeast, Belmont, Roanoke, Roanoke city,
Virginia, United States, 24013

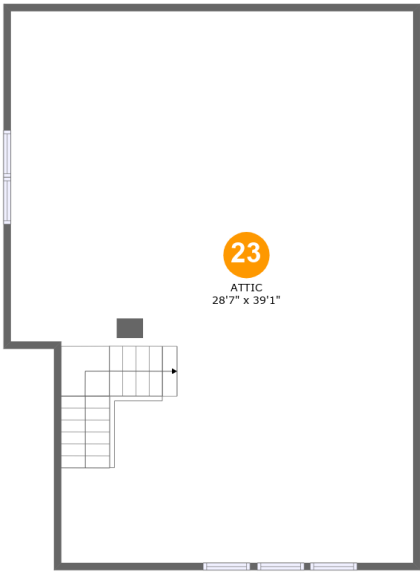


Room dimensions

Floor 3 Total:1060sqft Excluded: 0sqft

#		Max Dimensions	sqft	Included
14	Bedroom	12'3" x 15'7"	178 sq. ft	Yes
15	Office	12'4" x 11'6"	117 sq. ft	Yes
16	W.I.C.	4'9" x 8'3"	39 sq. ft	Yes
17	W.I.C.	6'11" x 8'3"	57 sq. ft	Yes
18	Bedroom	12'3" x 14'7"	179 sq. ft	Yes
19	Bedroom	11'5" x 14'10"	169 sq. ft	Yes
20	Laundry	4'1" x 8'3"	34 sq. ft	Yes
21	Hall	5'2" x 27'3"	167 sq. ft	Yes
22	Bath	7'2" x 8'3"	58 sq. ft	Yes

809 Elm Avenue Southeast, Belmont, Roanoke, Roanoke city,
Virginia, United States, 24013



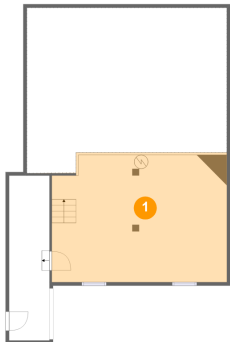
Room dimensions

Floor 4 Total:0sqft Excluded: 1060sqft

#		Max Dimensions	sqft	Included
23	Attic	28'7" x 39'1"	562 sq. ft	No

809 Elm Avenue Southeast, Belmont, Roanoke, Roanoke city,
Virginia, United States, 24013

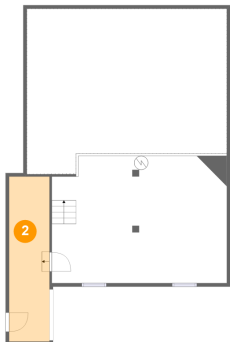
1 Floor 1 - Basement



Max Dimensions: 25'0" x 18'1"
Calculated Area: 450 sq. ft
Included: No

Heated: Yes
Finished: No
Enclosed: Yes
Contiguous: Yes
Permitted: Yes
Wet space: No
Addition: No
Conversion: No

2 Floor 1 - Basement

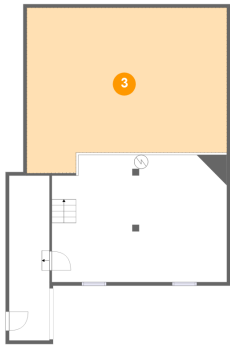


Max Dimensions: 5'9" x 23'6"
Calculated Area: 135 sq. ft
Included: Yes

Heated: Yes
Finished: Yes
Enclosed: Yes
Contiguous: Yes
Permitted: Yes
Wet space: No
Addition: No
Conversion: No

809 Elm Avenue Southeast, Belmont, Roanoke, Roanoke city,
Virginia, United States, 24013

3 Floor 1 - Crawl Space



Max Dimensions: 28'7" x 23'7"
Calculated Area: 609 sq. ft
Included: No

Heated: No
Finished: No
Enclosed: No
Contiguous: Yes
Permitted: No
Wet space: No
Addition: No
Conversion: No

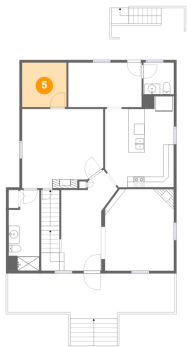
4 Floor 2 - Dining Room



Max Dimensions: 13'10" x 8'4"
Calculated Area: 115 sq. ft
Included: Yes

Heated: Yes
Finished: Yes
Enclosed: Yes
Contiguous: Yes
Permitted: Yes
Wet space: No
Addition: No
Conversion: No

5 Floor 2 - W.I.C.

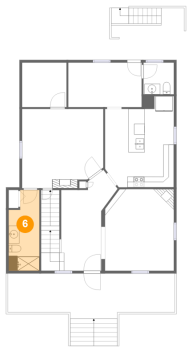


Max Dimensions: 8'4" x 8'4"
Calculated Area: 70 sq. ft
Included: Yes

Heated: Yes
Finished: Yes
Enclosed: Yes
Contiguous: Yes
Permitted: Yes
Wet space: No
Addition: No
Conversion: No

809 Elm Avenue Southeast, Belmont, Roanoke, Roanoke city,
Virginia, United States, 24013

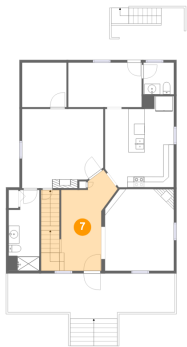
6 Floor 2 - Bath



Max Dimensions: 5'9" x 15'2"
Calculated Area: 79 sq. ft
Included: Yes

Heated: Yes
Finished: Yes
Enclosed: Yes
Contiguous: Yes
Permitted: Yes
Wet space: Yes
Addition: No
Conversion: No

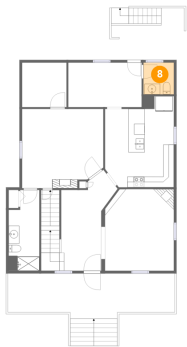
7 Floor 2 - Foyer



Max Dimensions: 7'6" x 17'8"
Calculated Area: 188 sq. ft
Included: Yes

Heated: Yes
Finished: Yes
Enclosed: Yes
Contiguous: Yes
Permitted: Yes
Wet space: No
Addition: No
Conversion: No

8 Floor 2 - WC

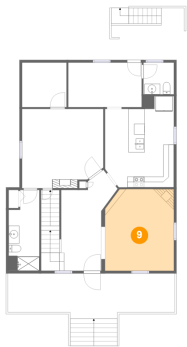


Max Dimensions: 5'9" x 6'0"
Calculated Area: 34 sq. ft
Included: Yes

Heated: Yes
Finished: Yes
Enclosed: Yes
Contiguous: Yes
Permitted: Yes
Wet space: Yes
Addition: No
Conversion: No

809 Elm Avenue Southeast, Belmont, Roanoke, Roanoke city,
Virginia, United States, 24013

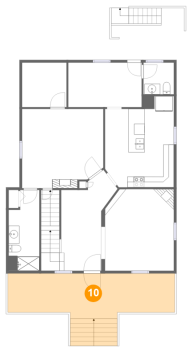
9 Floor 2 - Living Room



Max Dimensions: 12'11" x 15'4"
Calculated Area: 194 sq. ft
Included: Yes

Heated: Yes
Finished: Yes
Enclosed: Yes
Contiguous: Yes
Permitted: Yes
Wet space: No
Addition: No
Conversion: No

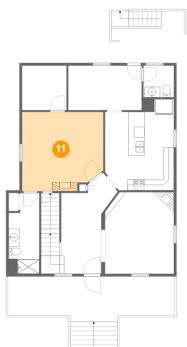
10 Floor 2 - Porch



Max Dimensions: 31'5" x 8'6"
Calculated Area: 285 sq. ft
Included: No

Heated: No
Finished: Yes
Enclosed: No
Contiguous: Yes
Permitted: Yes
Wet space: No
Addition: No
Conversion: No

11 Floor 2 - Primary Bedroom

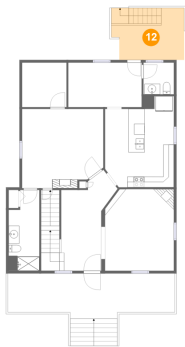


Max Dimensions: 15'3" x 14'11"
Calculated Area: 216 sq. ft
Included: Yes

Heated: Yes
Finished: Yes
Enclosed: Yes
Contiguous: Yes
Permitted: Yes
Wet space: No
Addition: No
Conversion: No

809 Elm Avenue Southeast, Belmont, Roanoke, Roanoke city,
Virginia, United States, 24013

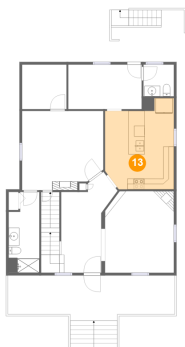
12 Floor 2 - Patio



Max Dimensions: 13'8" x 9'9"
Calculated Area: 128 sq. ft
Included: No

Heated: No
Finished: Yes
Enclosed: No
Contiguous: Yes
Permitted: Yes
Wet space: No
Addition: No
Conversion: No

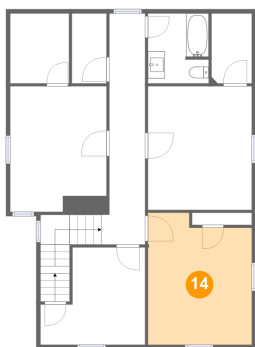
13 Floor 2 - Kitchen



Max Dimensions: 12'11" x 17'2"
Calculated Area: 195 sq. ft
Included: Yes

Heated: Yes
Finished: Yes
Enclosed: Yes
Contiguous: Yes
Permitted: Yes
Wet space: No
Addition: No
Conversion: No

14 Floor 3 - Bedroom

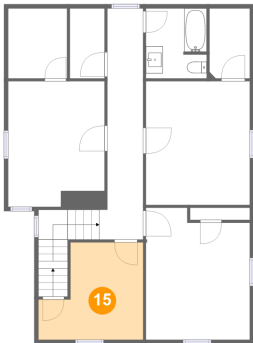


Max Dimensions: 12'3" x 15'7"
Calculated Area: 178 sq. ft
Included: Yes

Heated: Yes
Finished: Yes
Enclosed: Yes
Contiguous: Yes
Permitted: Yes
Wet space: No
Addition: No
Conversion: No

809 Elm Avenue Southeast, Belmont, Roanoke, Roanoke city,
Virginia, United States, 24013

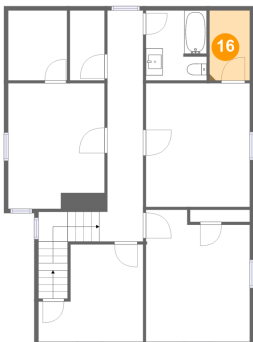
15 Floor 3 - Office



Max Dimensions: 12'4" x 11'6"
Calculated Area: 117 sq. ft
Included: Yes

Heated: Yes
Finished: Yes
Enclosed: Yes
Contiguous: Yes
Permitted: Yes
Wet space: No
Addition: No
Conversion: No

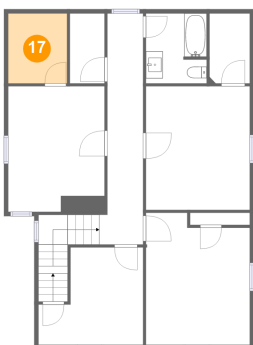
16 Floor 3 - W.I.C.



Max Dimensions: 4'9" x 8'3"
Calculated Area: 39 sq. ft
Included: Yes

Heated: Yes
Finished: Yes
Enclosed: Yes
Contiguous: Yes
Permitted: Yes
Wet space: No
Addition: No
Conversion: No

17 Floor 3 - W.I.C.

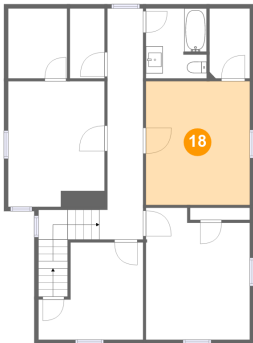


Max Dimensions: 6'11" x 8'3"
Calculated Area: 57 sq. ft
Included: Yes

Heated: Yes
Finished: Yes
Enclosed: Yes
Contiguous: Yes
Permitted: Yes
Wet space: No
Addition: No
Conversion: No

809 Elm Avenue Southeast, Belmont, Roanoke, Roanoke city,
Virginia, United States, 24013

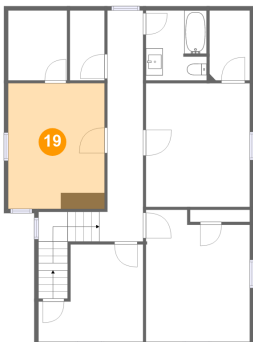
18 Floor 3 - Bedroom



Max Dimensions: 12'3" x 14'7"
Calculated Area: 179 sq. ft
Included: Yes

Heated: Yes
Finished: Yes
Enclosed: Yes
Contiguous: Yes
Permitted: Yes
Wet space: No
Addition: No
Conversion: No

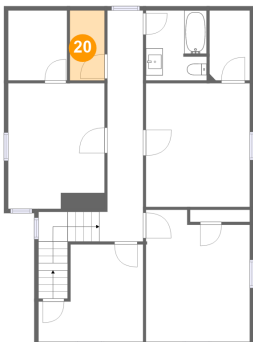
19 Floor 3 - Bedroom



Max Dimensions: 11'5" x 14'10"
Calculated Area: 169 sq. ft
Included: Yes

Heated: Yes
Finished: Yes
Enclosed: Yes
Contiguous: Yes
Permitted: Yes
Wet space: No
Addition: No
Conversion: No

20 Floor 3 - Laundry

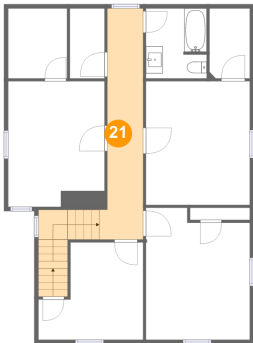


Max Dimensions: 4'1" x 8'3"
Calculated Area: 34 sq. ft
Included: Yes

Heated: Yes
Finished: Yes
Enclosed: Yes
Contiguous: Yes
Permitted: Yes
Wet space: No
Addition: No
Conversion: No

809 Elm Avenue Southeast, Belmont, Roanoke, Roanoke city,
Virginia, United States, 24013

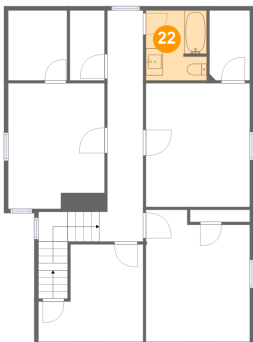
21 Floor 3 - Hall



Max Dimensions: 5'2" x 27'3"
Calculated Area: 167 sq. ft
Included: Yes

Heated: Yes
Finished: Yes
Enclosed: Yes
Contiguous: Yes
Permitted: Yes
Wet space: No
Addition: No
Conversion: No

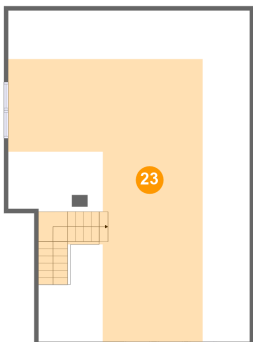
22 Floor 3 - Bath



Max Dimensions: 7'2" x 8'3"
Calculated Area: 58 sq. ft
Included: Yes

Heated: Yes
Finished: Yes
Enclosed: Yes
Contiguous: Yes
Permitted: Yes
Wet space: Yes
Addition: No
Conversion: No

23 Floor 4 - Attic



Max Dimensions: 28'7" x 39'1"
Calculated Area: 562 sq. ft
Included: No

Heated: No
Finished: No
Enclosed: Yes
Contiguous: Yes
Permitted: Yes
Wet space: No
Addition: No
Conversion: No