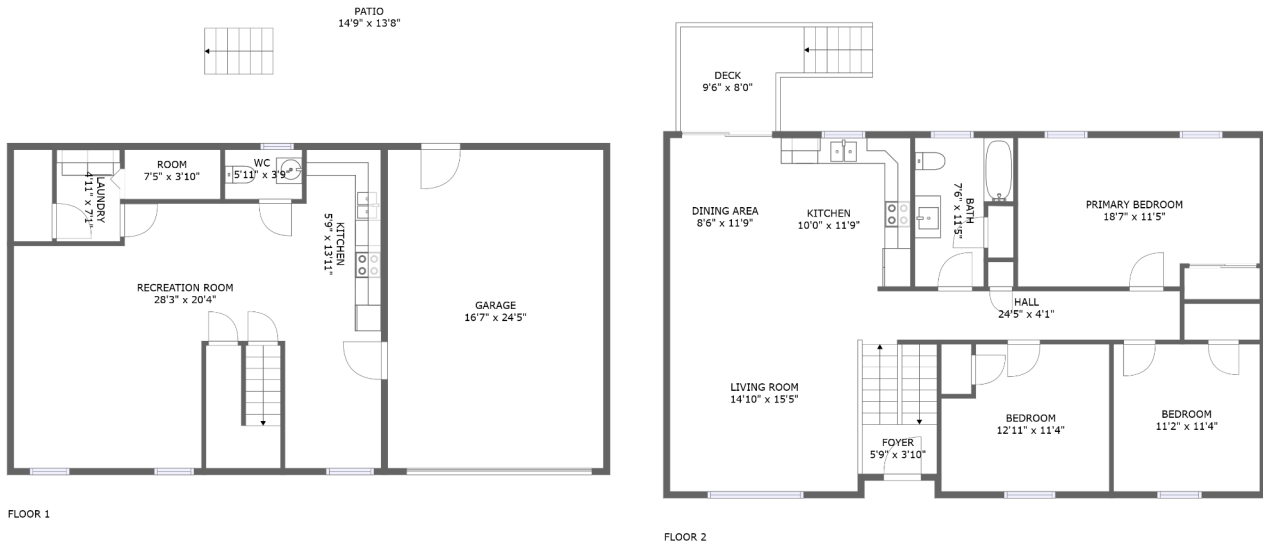


Home Data Report

80 Cotter Street, East Providence, Rhode Island
02914, United States



Property Summary



2 floors



3 bedrooms



1 bathrooms



2,773 total sqft



1 garages



2,048 Gross Living Area sqft

Scan captured on Thu, 23 May 2024 22:02:13 GMT

Measurements Deemed Highly Reliable Based On Technology Used But Are Not Guaranteed.

Home Data Report

80 Cotter Street, East Providence, Rhode Island
02914, United States



Room Dimensions

Floor 1

Total sqft: 1387

Living area: 747

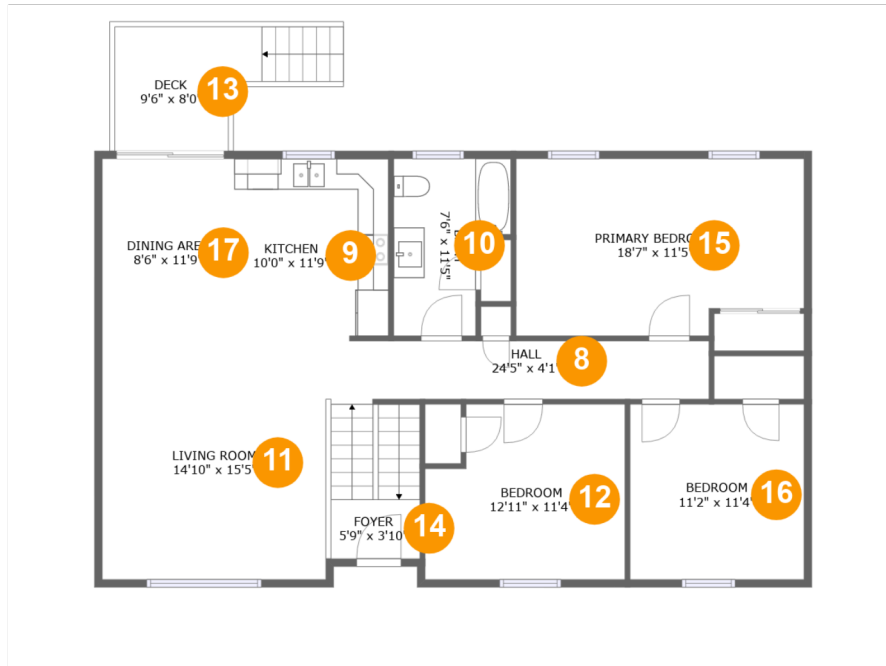
#	Room name	Dimensions	Area (sqft)	Counted as Living Area
1	Kitchen	5'9" x 13'11"	80 sq. ft	Yes
2	Wc	5'11" x 3'9"	23 sq. ft	Yes
3	Garage	16'7" x 24'5"	407 sq. ft	No
4	Recreation Room	28'3" x 20'4"	429 sq. ft	Yes
5	Laundry	4'11" x 7'1"	35 sq. ft	Yes
6	Room	7'5" x 3'10"	28 sq. ft	Yes
7	Patio	14'9" x 13'8"	203 sq. ft	No

Scan captured on Thu, 23 May 2024 22:02:13 GMT

Measurements Deemed Highly Reliable Based On Technology Used But Are Not Guaranteed.

Home Data Report

80 Cotter Street, East Providence, Rhode Island
02914, United States



Room Dimensions

Floor 2

Total sqft: 1386

Living area: 1301

#	Room name	Dimensions	Area (sqft)	Counted as Living Area
8	Hall	24'5" x 4'1"	93 sq. ft	Yes
9	Kitchen	10'0" x 11'9"	117 sq. ft	Yes
10	Bath	7'6" x 11'5"	72 sq. ft	Yes
11	Living Room	14'10" x 15'5"	257 sq. ft	Yes
12	Bedroom	12'11" x 11'4"	135 sq. ft	Yes
13	Deck	9'6" x 8'0"	85 sq. ft	No
14	Foyer	5'9" x 3'10"	29 sq. ft	Yes
15	Primary Bedroom	18'7" x 11'5"	202 sq. ft	Yes
16	Bedroom	11'2" x 11'4"	128 sq. ft	Yes
17	Dining Area	8'6" x 11'9"	100 sq. ft	Yes

Scan captured on Thu, 23 May 2024 22:02:13 GMT

Measurements Deemed Highly Reliable Based On Technology Used But Are Not Guaranteed.

Home Data Report

80 Cotter Street, East Providence, Rhode Island
02914, United States

1 Floor 1 - Kitchen



Dimensions: 5'9" x 13'11"
Area: 80 sq. ft
Counted as Living Area:
Yes

Heated: Yes
Finished: Yes
Enclosed: Yes
Contiguous:
Yes
Permitted: Yes
Wet Space: No
Addition: No
Conversion: No

2 Floor 1 - Wc



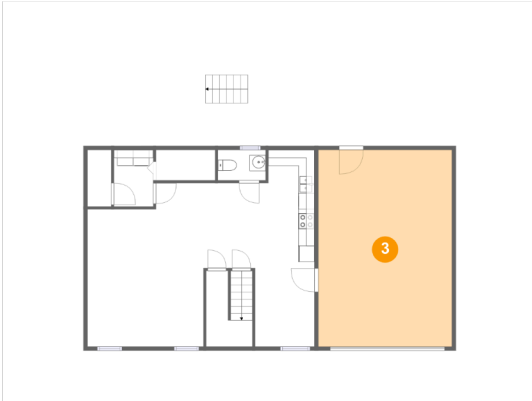
Dimensions: 5'11" x 3'9"
Area: 23 sq. ft **Counted**
as Living Area:
Yes

Heated: Yes
Finished: Yes
Enclosed: Yes
Contiguous:
Yes
Permitted: Yes
Wet Space: Yes
Addition: No
Conversion: No

Home Data Report

80 Cotter Street, East Providence, Rhode Island
02914, United States

3 Floor 1 - Garage



Dimensions: 16'7" x 24'5"
Area: 407 sq. ft
Counted as Living Area: No

Heated: No
Finished: No
Enclosed: Yes
Contiguous: Yes
Permitted: Yes
Wet Space: No
Addition: No
Conversion: No

4 Floor 1 - Recreation Room



Dimensions: 28'3" x 20'4"
Area: 429 sq. ft Counted
as Living Area:
Yes

Heated: Yes
Finished: Yes
Enclosed: Yes
Contiguous:
Yes
Permitted: Yes
Wet Space: No
Addition: No
Conversion: No

5 Floor 1 - Laundry



Dimensions: 4'11" x 7'1"
Area: 35 sq. ft Counted
as Living Area:
Yes

Heated: Yes
Finished: Yes
Enclosed: Yes
Contiguous:
Yes
Permitted: Yes
Wet Space: No
Addition: No
Conversion: No

Home Data Report

80 Cotter Street, East Providence, Rhode Island
02914, United States

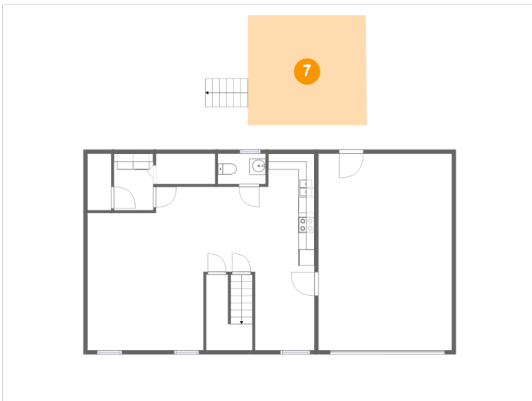
6 Floor 1 - Room



Dimensions: 7'5" x 3'10"
Area: 28 sq. ft Counted
as Living Area:
Yes

Heated: Yes
Finished: Yes
Enclosed: Yes
Contiguous:
Yes
Permitted: Yes
Wet Space: No
Addition: No
Conversion: No

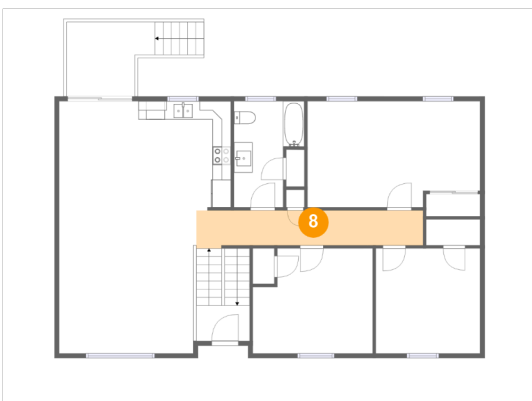
7 Floor 1 - Patio



Dimensions: 14'9" x 13'8"
Area: 203 sq. ft
Counted as Living Area: No

Heated: No
Finished: Yes
Enclosed: No
Contiguous: Yes
Permitted: Yes
Wet Space: No
Addition: No
Conversion: No

8 Floor 2 - Hall



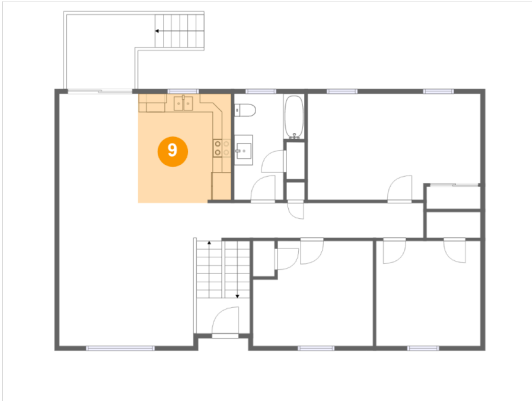
Dimensions: 24'5" x 4'1"
Area: 93 sq. ft Counted
as Living Area:
Yes

Heated: Yes
Finished: Yes
Enclosed: Yes
Contiguous:
Yes
Permitted: Yes
Wet Space: No
Addition: No
Conversion: No

Home Data Report

80 Cotter Street, East Providence, Rhode Island
02914, United States

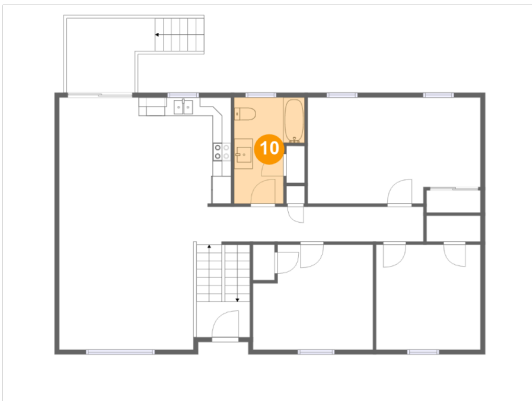
9 Floor 2 - Kitchen



Dimensions: 10'0" x 11'9"
Area: 117 sq. ft Counted
as Living Area:
Yes

Heated: Yes
Finished: Yes
Enclosed: Yes
Contiguous:
Yes
Permitted: Yes
Wet Space: No
Addition: No
Conversion: No

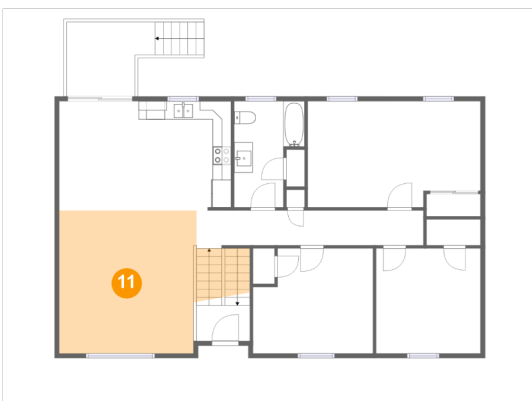
10 Floor 2 - Bath



Dimensions: 7'6" x 11'5"
Area: 72 sq. ft Counted
as Living Area:
Yes

Heated: Yes
Finished: Yes
Enclosed: Yes
Contiguous:
Yes
Permitted: Yes
Wet Space: Yes
Addition: No
Conversion: No

11 Floor 2 - Living Room



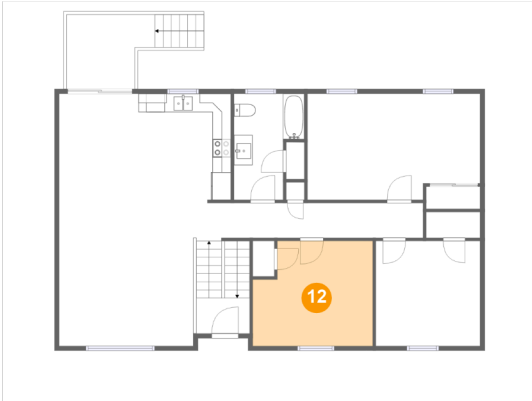
Dimensions: 14'10" x 15'5"
Area: 257 sq. ft
Counted as Living Area:
Yes

Heated: Yes
Finished: Yes
Enclosed: Yes
Contiguous:
Yes
Permitted: Yes
Wet Space: No
Addition: No
Conversion: No

Home Data Report

80 Cotter Street, East Providence, Rhode Island
02914, United States

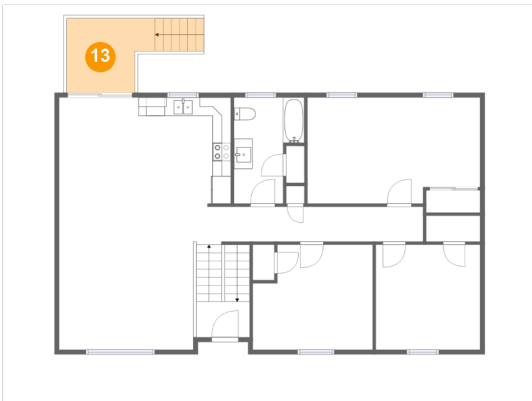
12 Floor 2 - Bedroom



Dimensions: 12'11" x 11'4"
Area: 135 sq. ft
Counted as Living Area:
Yes

Heated: Yes
Finished: Yes
Enclosed: Yes
Contiguous:
Yes
Permitted: Yes
Wet Space: No
Addition: No
Conversion: No

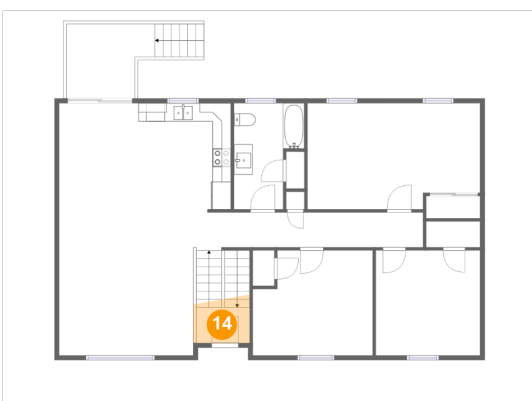
13 Floor 2 - Deck



Dimensions: 9'6" x 8'0"
Area: 85 sq. ft
Counted as Living Area: No

Heated: No
Finished: Yes
Enclosed: No
Contiguous: Yes
Permitted: Yes
Wet Space: No
Addition: No
Conversion: No

14 Floor 2 - Foyer



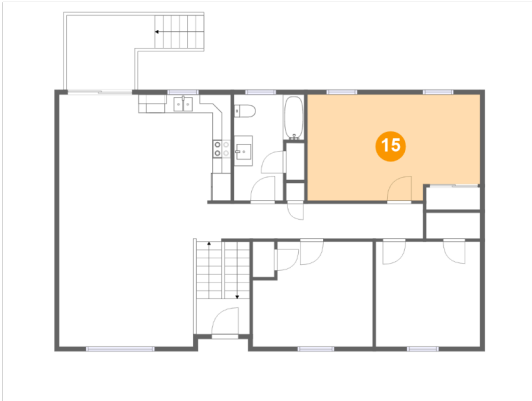
Dimensions: 5'9" x 3'10"
Area: 29 sq. ft
Counted
as Living Area:
Yes

Heated: Yes
Finished: Yes
Enclosed: Yes
Contiguous:
Yes
Permitted: Yes
Wet Space: No
Addition: No
Conversion: No

Home Data Report

80 Cotter Street, East Providence, Rhode Island
02914, United States

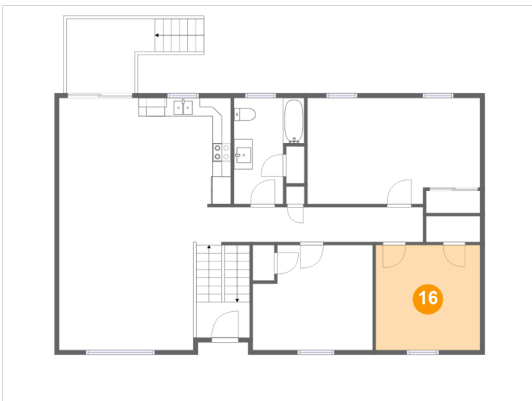
15 Floor 2 - Primary Bedroom



Dimensions: 18'7" x 11'5"
Area: 202 sq. ft Counted
as Living Area:
Yes

Heated: Yes
Finished: Yes
Enclosed: Yes
Contiguous:
Yes
Permitted: Yes
Wet Space: No
Addition: No
Conversion: No

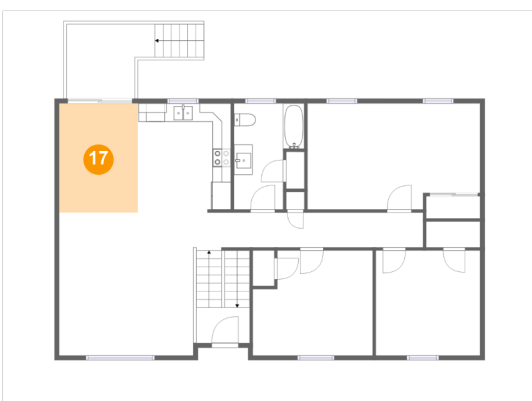
16 Floor 2 - Bedroom



Dimensions: 11'2" x 11'4"
Area: 128 sq. ft Counted
as Living Area:
Yes

Heated: Yes
Finished: Yes
Enclosed: Yes
Contiguous:
Yes
Permitted: Yes
Wet Space: No
Addition: No
Conversion: No

17 Floor 2 - Dining Area



Dimensions: 8'6" x 11'9"
Area: 100 sq. ft
Counted as Living Area:
Yes

Heated: Yes
Finished: Yes
Enclosed: Yes
Contiguous:
Yes
Permitted: Yes
Wet Space: No
Addition: No
Conversion: No