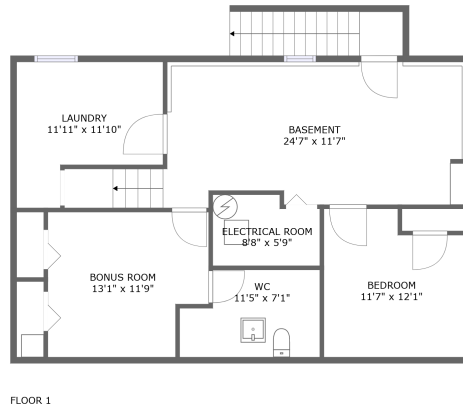
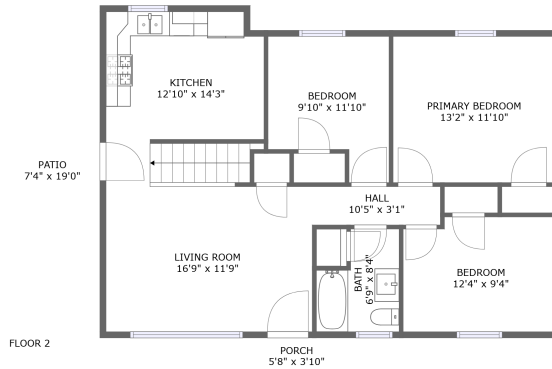



927 Emerald Drive, Vinton Heights, Vinton, Roanoke County, Virginia, United States, 24179



Property summary


 **0** Garages

 **4** Bedrooms

 **1** Bathrooms

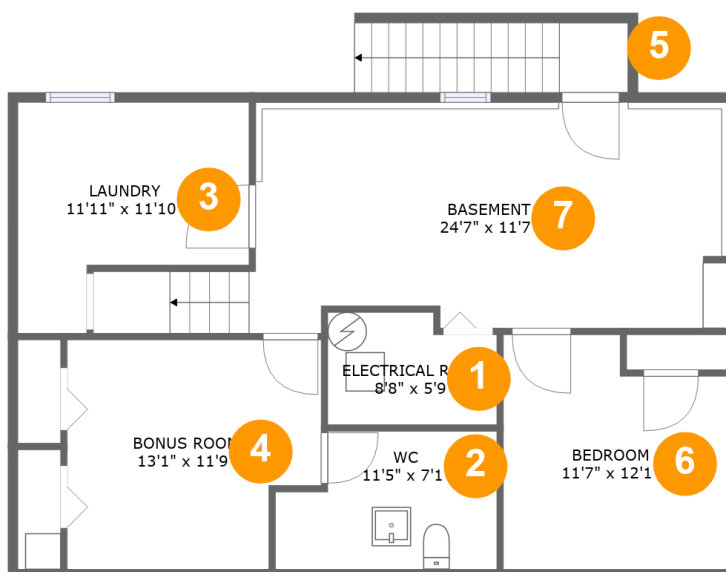
 **1** Half baths

 **2** Floors

 **1,663** Gross living area sqft

 **2,060** Total sqft

927 Emerald Drive, Vinton Heights, Vinton, Roanoke County, Virginia, United States, 24179



Room dimensions

Floor 1

Total sqft: 938 Living area: 892

#		Dimensions	sqft	Counted as living area
1	Room	8'8" x 5'9"	46 sq. ft	No
2	Bath	11'5" x 7'1"	72 sq. ft	Yes
3	Utility	11'11" x 11'10"	112 sq. ft	Yes
4	Room	13'1" x 11'9"	142 sq. ft	Yes
5	Outdoor	3'6" x 3'7"	13 sq. ft	No
6	Bedroom	11'7" x 12'1"	127 sq. ft	Yes
7	Basement	24'7" x 11'7"	301 sq. ft	Yes

927 Emerald Drive, Vinton Heights, Vinton, Roanoke County, Virginia, United States, 24179



Room dimensions

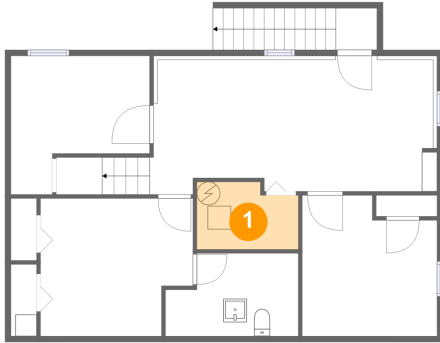
Floor 2

Total sqft: 1122 Living area: 771

#		Dimensions	sqft	Counted as living area
8	Bedroom	9'10" x 11'10"	99 sq. ft	Yes
9	Outdoor	5'8" x 3'10"	22 sq. ft	No
10	Outdoor	7'4" x 19'0"	140 sq. ft	No
11	Hall	10'5" x 3'1"	32 sq. ft	Yes
12	Bedroom	13'2" x 11'10"	156 sq. ft	Yes
13	Bath	6'9" x 8'4"	47 sq. ft	Yes
14	Kitchen	12'10" x 14'3"	172 sq. ft	No
15	Living Room	16'9" x 11'9"	197 sq. ft	Yes
16	Bedroom	12'4" x 9'4"	112 sq. ft	Yes

927 Emerald Drive, Vinton Heights, Vinton, Roanoke County, Virginia, United States, 24179

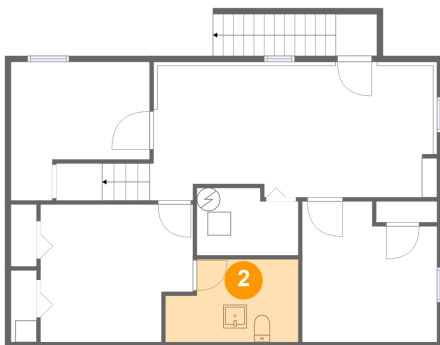
1 Floor 1 - Room



Dimensions: 8'8" x 5'9"
Area: 46 sq. ft
Counted as living area: No

Heated: No
Finished: No
Enclosed: Yes
Contiguous: Yes
Permitted: Yes
Wet space: No
Addition: No
Conversion: No

2 Floor 1 - Bath

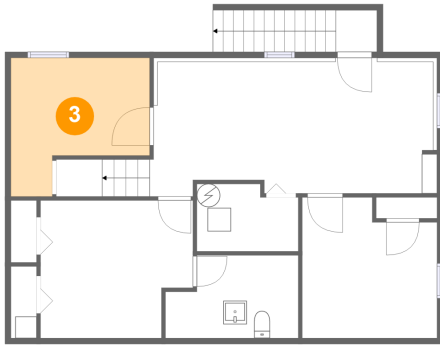


Dimensions: 11'5" x 7'1"
Area: 72 sq. ft
Counted as living area: Yes

Heated: Yes
Finished: Yes
Enclosed: Yes
Contiguous: Yes
Permitted: Yes
Wet space: Yes
Addition: No
Conversion: No

927 Emerald Drive, Vinton Heights, Vinton, Roanoke County, Virginia, United States, 24179

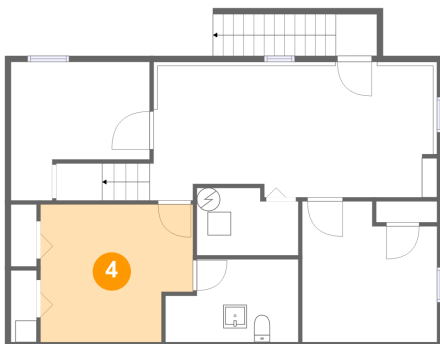
3 Floor 1 - Utility



Dimensions: 11'11" x 11'10"
Area: 112 sq. ft
Counted as living area: Yes

Heated: Yes
Finished: Yes
Enclosed: Yes
Contiguous: Yes
Permitted: Yes
Wet space: No
Addition: No
Conversion: No

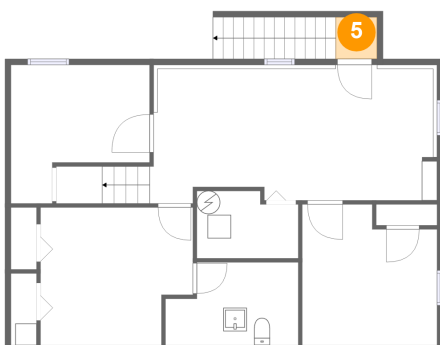
4 Floor 1 - Room



Dimensions: 13'1" x 11'9"
Area: 142 sq. ft
Counted as living area: Yes

Heated: Yes
Finished: Yes
Enclosed: Yes
Contiguous: Yes
Permitted: Yes
Wet space: No
Addition: No
Conversion: No

5 Floor 1 - Outdoor

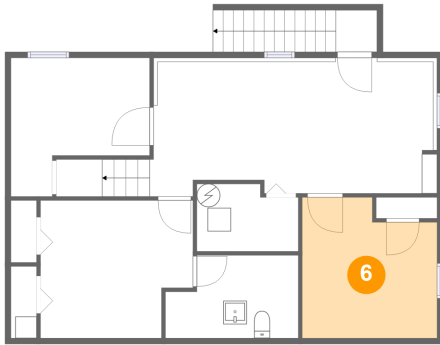


Dimensions: 3'6" x 3'7"
Area: 13 sq. ft
Counted as living area: No

Heated: No
Finished: No
Enclosed: No
Contiguous: Yes
Permitted: No
Wet space: No
Addition: No
Conversion: No

927 Emerald Drive, Vinton Heights, Vinton, Roanoke County, Virginia, United States, 24179

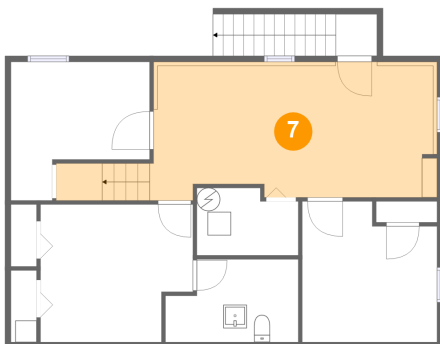
6 Floor 1 - Bedroom



Dimensions: 11'7" x 12'1"
Area: 127 sq. ft
Counted as living area: Yes

Heated: Yes
Finished: Yes
Enclosed: Yes
Contiguous: Yes
Permitted: Yes
Wet space: No
Addition: No
Conversion: No

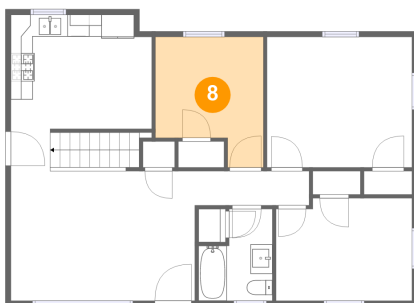
7 Floor 1 - Basement



Dimensions: 24'7" x 11'7"
Area: 301 sq. ft
Counted as living area: Yes

Heated: Yes
Finished: Yes
Enclosed: Yes
Contiguous: Yes
Permitted: Yes
Wet space: No
Addition: No
Conversion: No

8 Floor 2 - Bedroom

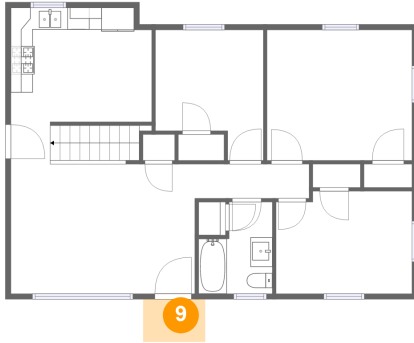


Dimensions: 9'10" x 11'10"
Area: 99 sq. ft
Counted as living area: Yes

Heated: Yes
Finished: Yes
Enclosed: Yes
Contiguous: Yes
Permitted: Yes
Wet space: No
Addition: No
Conversion: No

927 Emerald Drive, Vinton Heights, Vinton, Roanoke County, Virginia, United States, 24179

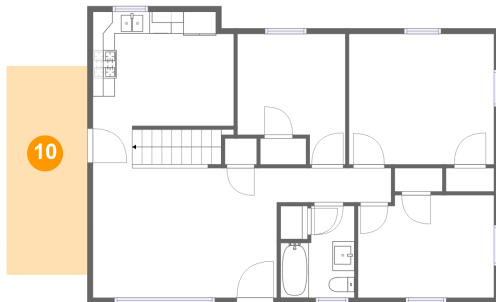
9 Floor 2 - Outdoor



Dimensions: 5'8" x 3'10"
Area: 22 sq. ft
Counted as living area: No

Heated: No
Finished: Yes
Enclosed: No
Contiguous: Yes
Permitted: Yes
Wet space: No
Addition: No
Conversion: No

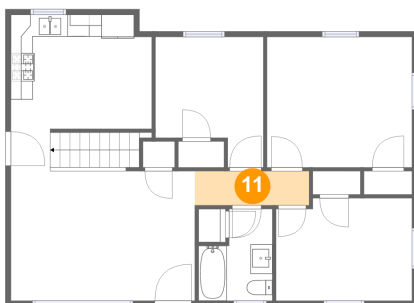
10 Floor 2 - Outdoor



Dimensions: 7'4" x 19'0"
Area: 140 sq. ft
Counted as living area: No

Heated: No
Finished: Yes
Enclosed: No
Contiguous: Yes
Permitted: Yes
Wet space: No
Addition: No
Conversion: No

11 Floor 2 - Hall

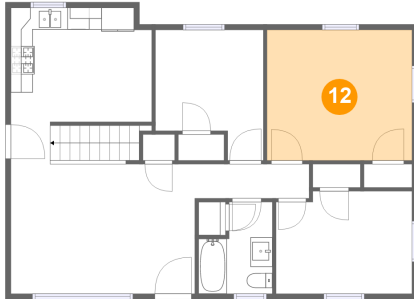


Dimensions: 10'5" x 3'1"
Area: 32 sq. ft
Counted as living area: Yes

Heated: Yes
Finished: Yes
Enclosed: Yes
Contiguous: Yes
Permitted: Yes
Wet space: No
Addition: No
Conversion: No

927 Emerald Drive, Vinton Heights, Vinton, Roanoke
County, Virginia, United States, 24179

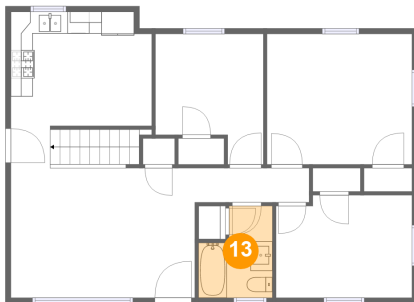
12 Floor 2 - Bedroom



Dimensions: 13'2" x 11'10"
Area: 156 sq. ft
Counted as living area: Yes

Heated: Yes
Finished: Yes
Enclosed: Yes
Contiguous: Yes
Permitted: Yes
Wet space: No
Addition: No
Conversion: No

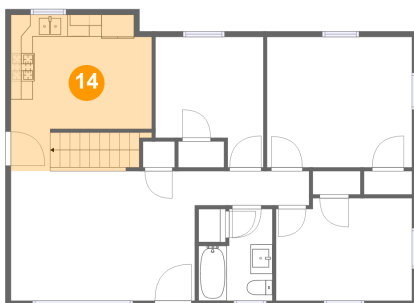
13 Floor 2 - Bath



Dimensions: 6'9" x 8'4"
Area: 47 sq. ft
Counted as living area: Yes

Heated: Yes
Finished: Yes
Enclosed: Yes
Contiguous: Yes
Permitted: Yes
Wet space: Yes
Addition: No
Conversion: No

14 Floor 2 - Kitchen

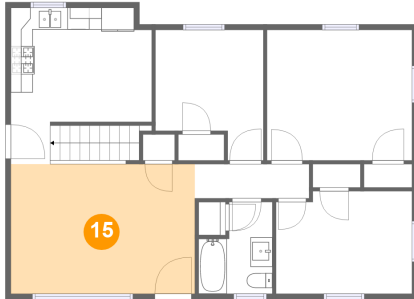


Dimensions: 12'10" x 14'3"
Area: 172 sq. ft
Counted as living area: No

Heated: Yes
Finished: Yes
Enclosed: Yes
Contiguous: Yes
Permitted: Yes
Wet space: No
Addition: No
Conversion: No

927 Emerald Drive, Vinton Heights, Vinton, Roanoke County, Virginia, United States, 24179

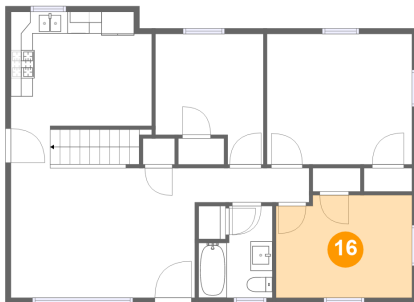
15 Floor 2 - Living Room



Dimensions: 16'9" x 11'9"
Area: 197 sq. ft
Counted as living area: Yes

Heated: Yes
Finished: Yes
Enclosed: Yes
Contiguous: Yes
Permitted: Yes
Wet space: No
Addition: No
Conversion: No

16 Floor 2 - Bedroom



Dimensions: 12'4" x 9'4"
Area: 112 sq. ft
Counted as living area: Yes

Heated: Yes
Finished: Yes
Enclosed: Yes
Contiguous: Yes
Permitted: Yes
Wet space: No
Addition: No
Conversion: No