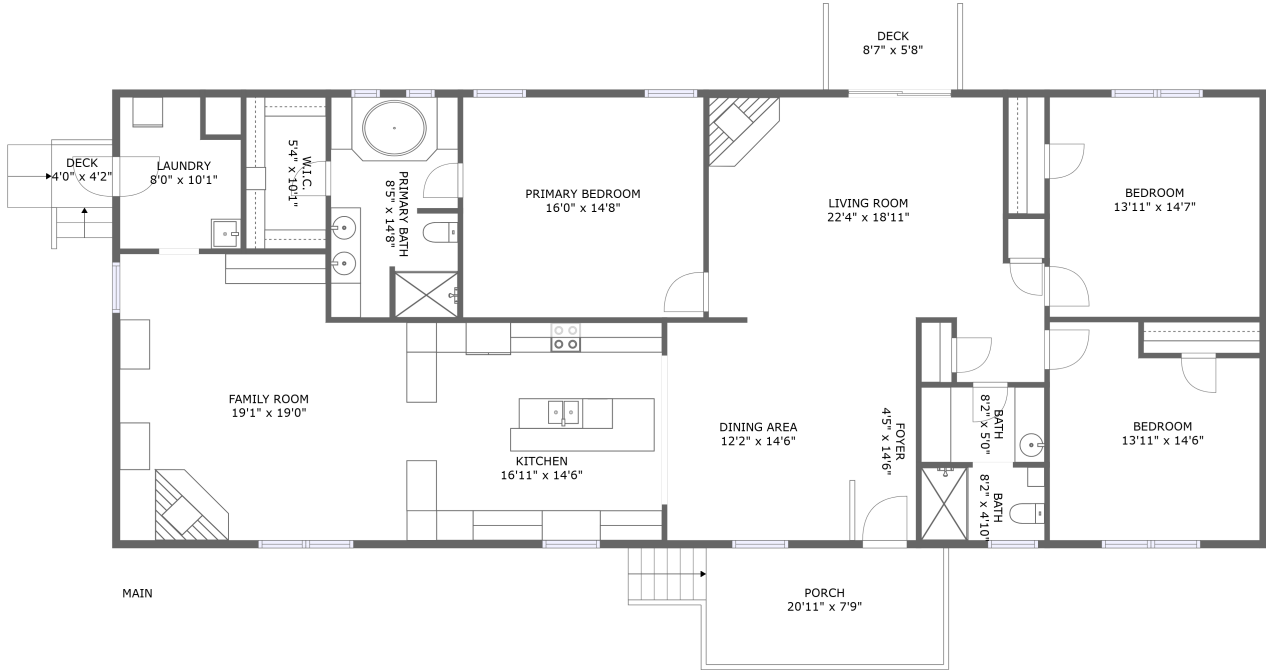


829 Grimes Creek Lane, Hardy, Franklin County, Virginia, United States, 24101

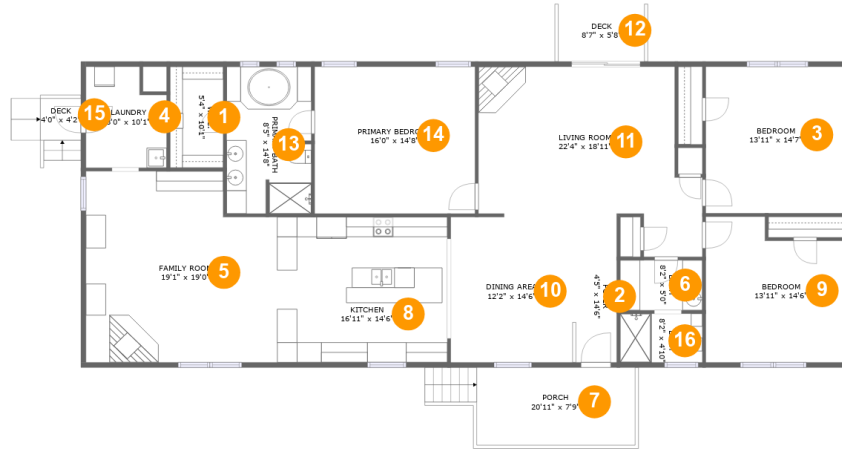


Property Summary

0 garages **3** bedrooms **2** bathrooms **0** half baths

1 floors **2,332** Gross Living Area sqft **2,538** total sqft

829 Grimes Creek Lane, Hardy, Franklin County, Virginia, United States, 24101



Room Dimensions

Floor 1

Total sqft: 2538

Living area: 2332

#	Room name	Dimensions	Area (sqft)	Counted as Living Area
1	W.i.c.	5'4" x 10'1"	53 sq. ft	Yes
2	Foyer	4'5" x 14'6"	64 sq. ft	Yes
3	Bedroom	13'11" x 14'7"	203 sq. ft	Yes
4	Laundry	8'0" x 10'1"	73 sq. ft	Yes
5	Family Room	19'1" x 19'0"	338 sq. ft	Yes
6	Bath	8'2" x 5'0"	41 sq. ft	Yes
7	Porch	20'11" x 7'9"	140 sq. ft	No
8	Kitchen	16'11" x 14'6"	245 sq. ft	Yes
9	Bedroom	13'11" x 14'6"	183 sq. ft	Yes
10	Dining Area	12'2" x 14'6"	176 sq. ft	Yes
11	Living Room	22'4" x 18'11"	324 sq. ft	Yes

Scan captured on Mon, 17 Jun 2024 17:58:27 GMT

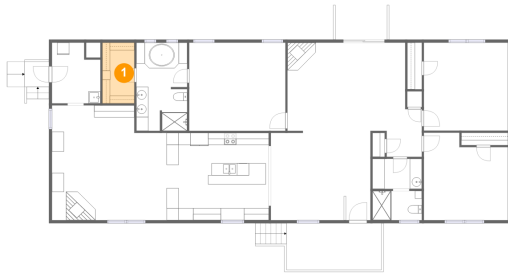
Information is calculated by CubiCasa technology; deemed highly reliable but not guaranteed.

**829 Grimes Creek Lane, Hardy, Franklin County,
Virginia, United States, 24101**

#	Room name	Dimensions	Area (sqft)	Counted as Living Area
12	Deck	8'7" x 5'8"	49 sq. ft	No
13	Primary Bath	8'5" x 14'8"	121 sq. ft	Yes
14	Primary Bedroom	16'0" x 14'8"	234 sq. ft	Yes
15	Deck	4'0" x 4'2"	17 sq. ft	No
16	Bath	8'2" x 4'10"	40 sq. ft	Yes

829 Grimes Creek Lane, Hardy, Franklin County, Virginia, United States, 24101

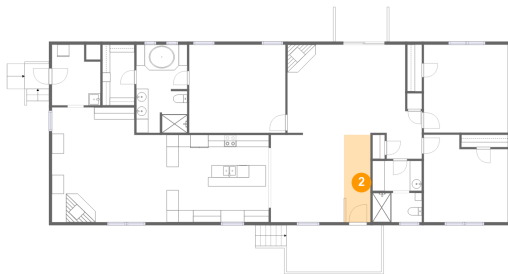
1 Floor 1 - W.i.c.



Dimensions: 5'4" x 10'1"
Area: 53 sq. ft
Counted as Living Area:
Yes

Heated: Yes
Finished: Yes
Enclosed: Yes
Contiguous:
Yes
Permitted: Yes
Wet Space: No
Addition: No
Conversion: No

2 Floor 1 - Foyer

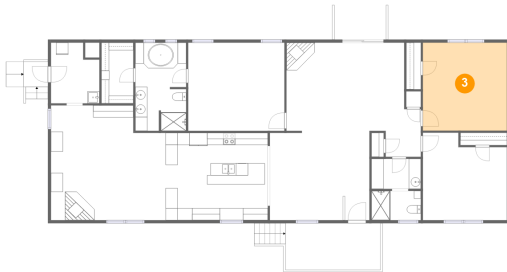


Dimensions: 4'5" x 14'6"
Area: 64 sq. ft
Counted as Living Area:
Yes

Heated: Yes
Finished: Yes
Enclosed: Yes
Contiguous:
Yes
Permitted: Yes
Wet Space: No
Addition: No
Conversion: No

829 Grimes Creek Lane, Hardy, Franklin County, Virginia, United States, 24101

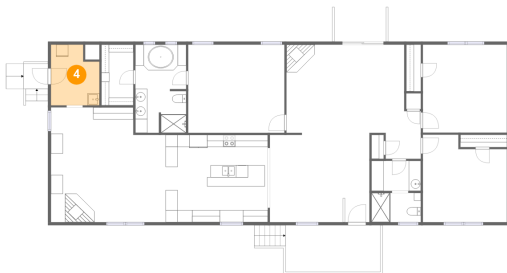
3 Floor 1 - Bedroom



Dimensions: 13'11" x 14'7"
Area: 203 sq. ft
Counted as Living Area:
Yes

Heated: Yes
Finished: Yes
Enclosed: Yes
Contiguous:
Yes
Permitted: Yes
Wet Space: No
Addition: No
Conversion: No

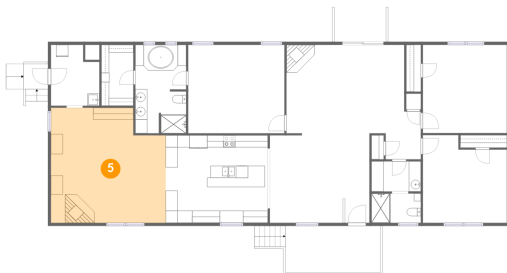
4 Floor 1 - Laundry



Dimensions: 8'0" x 10'1"
Area: 73 sq. ft
Counted as Living Area:
Yes

Heated: Yes
Finished: Yes
Enclosed: Yes
Contiguous:
Yes
Permitted: Yes
Wet Space: No
Addition: No
Conversion: No

5 Floor 1 - Family Room

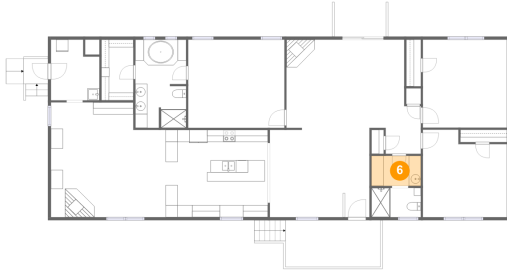


Dimensions: 19'1" x 19'0"
Area: 338 sq. ft
Counted as Living Area:
Yes

Heated: Yes
Finished: Yes
Enclosed: Yes
Contiguous:
Yes
Permitted: Yes
Wet Space: No
Addition: No
Conversion: No

829 Grimes Creek Lane, Hardy, Franklin County, Virginia, United States, 24101

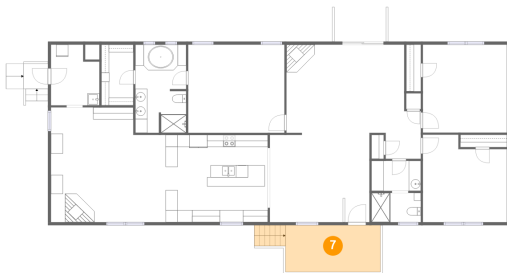
6 Floor 1 - Bath



Dimensions: 8'2" x 5'0"
Area: 41 sq. ft
Counted as Living Area:
Yes

Heated: Yes
Finished: Yes
Enclosed: Yes
Contiguous:
Yes
Permitted: Yes
Wet Space: Yes
Addition: No
Conversion: No

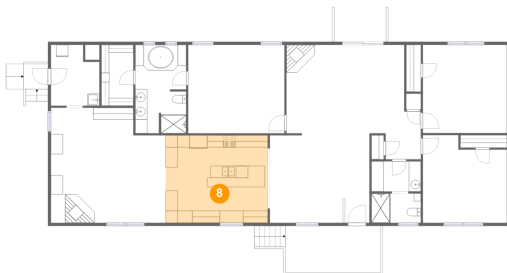
7 Floor 1 - Porch



Dimensions: 20'11" x 7'9"
Area: 140 sq. ft
Counted as Living Area: No

Heated: No
Finished: Yes
Enclosed: No
Contiguous: Yes
Permitted: Yes
Wet Space: No
Addition: No
Conversion: No

8 Floor 1 - Kitchen

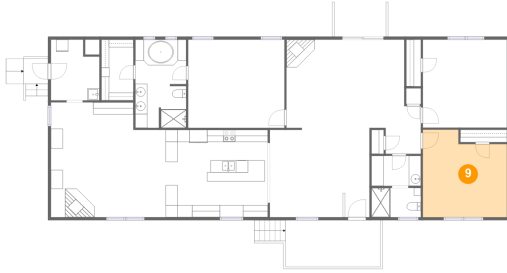


Dimensions: 16'11" x 14'6"
Area: 245 sq. ft
Counted as Living Area:
Yes

Heated: Yes
Finished: Yes
Enclosed: Yes
Contiguous:
Yes
Permitted: Yes
Wet Space: No
Addition: No
Conversion: No

829 Grimes Creek Lane, Hardy, Franklin County, Virginia, United States, 24101

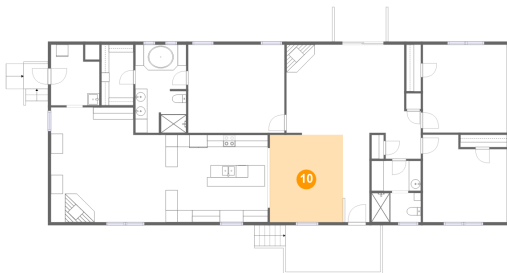
9 Floor 1 - Bedroom



Dimensions: 13'11" x 14'6"
Area: 183 sq. ft
Counted as Living Area:
Yes

Heated: Yes
Finished: Yes
Enclosed: Yes
Contiguous:
Yes
Permitted: Yes
Wet Space: No
Addition: No
Conversion: No

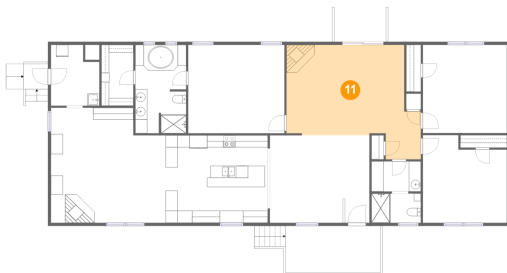
10 Floor 1 - Dining Area



Dimensions: 12'2" x 14'6"
Area: 176 sq. ft
Counted as Living Area:
Yes

Heated: Yes
Finished: Yes
Enclosed: Yes
Contiguous:
Yes
Permitted: Yes
Wet Space: No
Addition: No
Conversion: No

11 Floor 1 - Living Room

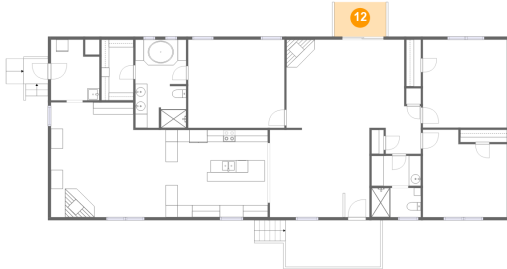


Dimensions: 22'4" x 18'11"
Area: 324 sq. ft
Counted as Living Area:
Yes

Heated: Yes
Finished: Yes
Enclosed: Yes
Contiguous:
Yes
Permitted: Yes
Wet Space: No
Addition: No
Conversion: No

829 Grimes Creek Lane, Hardy, Franklin County, Virginia, United States, 24101

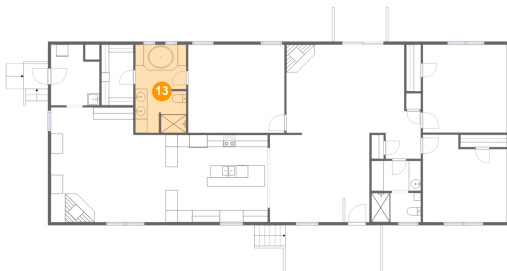
12 Floor 1 - Deck



Dimensions: 8'7" x 5'8"
Area: 49 sq. ft
Counted as Living Area: No

Heated: No
Finished: Yes
Enclosed: No
Contiguous: Yes
Permitted: Yes
Wet Space: No
Addition: No
Conversion: No

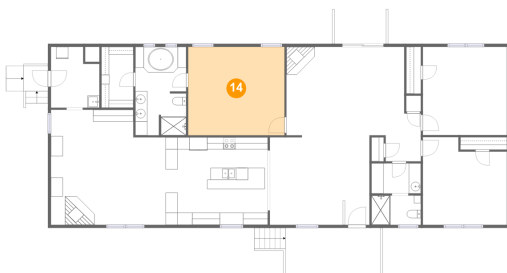
13 Floor 1 - Primary Bath



Dimensions: 8'5" x 14'8"
Area: 121 sq. ft
Counted as Living Area:
Yes

Heated: Yes
Finished: Yes
Enclosed: Yes
Contiguous:
Yes
Permitted: Yes
Wet Space: Yes
Addition: No
Conversion: No

14 Floor 1 - Primary Bedroom

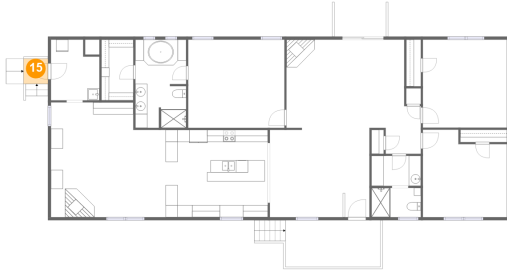


Dimensions: 16'0" x 14'8"
Area: 234 sq. ft
Counted as Living Area:
Yes

Heated: Yes
Finished: Yes
Enclosed: Yes
Contiguous:
Yes
Permitted: Yes
Wet Space: No
Addition: No
Conversion: No

829 Grimes Creek Lane, Hardy, Franklin County, Virginia, United States, 24101

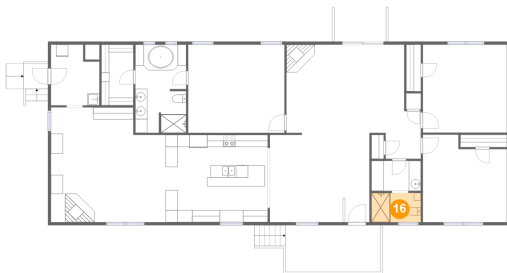
15 Floor 1 - Deck



Dimensions: 4'0" x 4'2"
Area: 17 sq. ft
Counted as Living Area: No

Heated: No
Finished: Yes
Enclosed: No
Contiguous: Yes
Permitted: Yes
Wet Space: No
Addition: No
Conversion: No

16 Floor 1 - Bath



Dimensions: 8'2" x 4'10"
Area: 40 sq. ft
Counted as Living Area:
Yes

Heated: Yes
Finished: Yes
Enclosed: Yes
Contiguous:
Yes
Permitted: Yes
Wet Space: Yes
Addition: No
Conversion: No