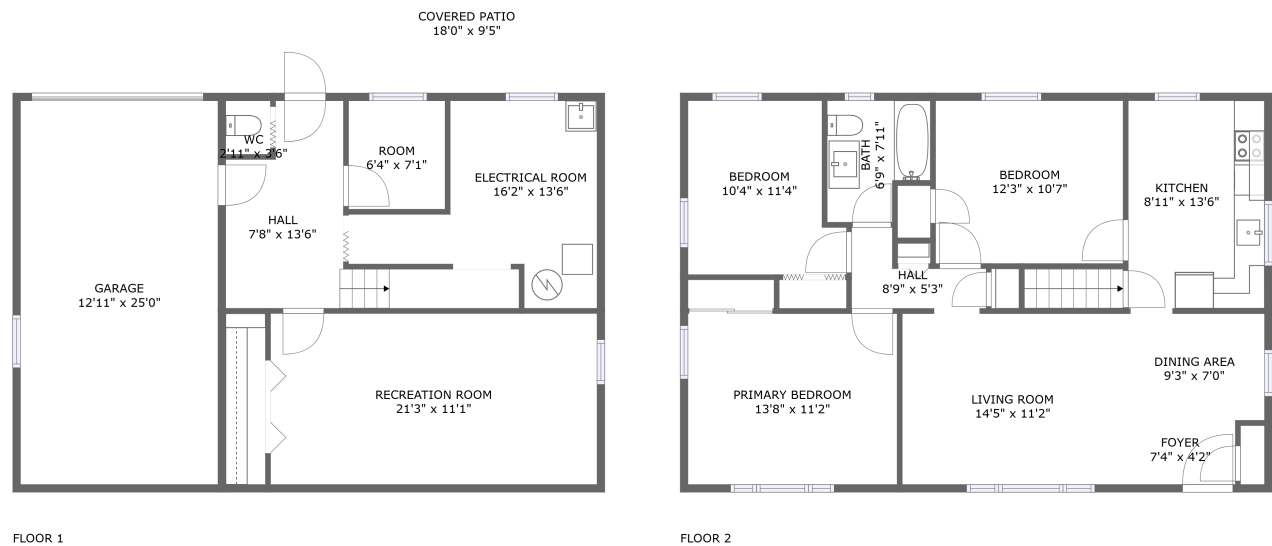




Home report


483 Grace St,Pleasant Hills,PA,US





Property summary


 **1** Garages


 **3** Bedrooms

 **1** Bathrooms

 **0** Half baths

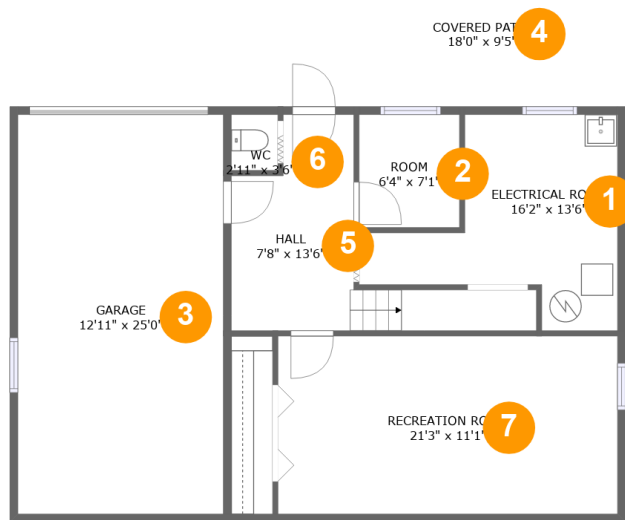
 **2** Floors

 **1,512** Gross living area sqft

 **2,179** Total sqft

Home report

483 Grace St,Pleasant Hills,PA,US



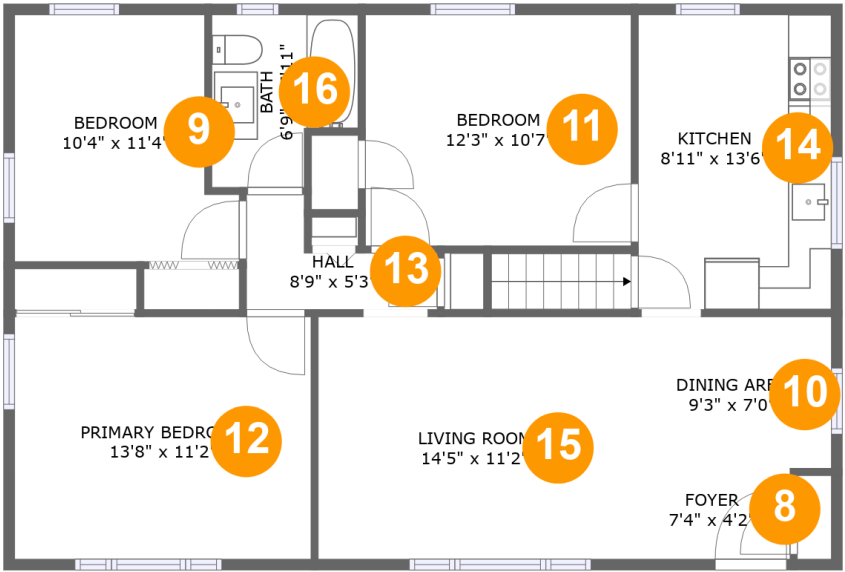
Room dimensions

Floor 1 Total sqft: 1174 Living area: 507

#		Dimensions	sqft	Counted as living area
1	Electrical Room	16'2" x 13'6"	137 sq. ft	No
2	Room	6'4" x 7'1"	45 sq. ft	Yes
3	Garage	12'11" x 25'0"	322 sq. ft	No
4	Covered Patio	18'0" x 9'5"	170 sq. ft	No
5	Hall	7'8" x 13'6"	121 sq. ft	Yes
6	WC	2'11" x 3'6"	10 sq. ft	Yes
7	Recreation Room	21'3" x 11'1"	237 sq. ft	Yes

Home report

483 Grace St,Pleasant Hills,PA,US

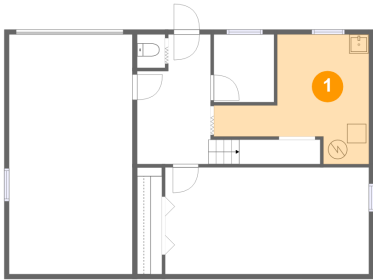


Room dimensions

Floor 2 Total sqft: 1005 Living area: 1005

#		Dimensions	sqft	Counted as living area
8	Foyer	7'4" x 4'2"	31 sq. ft	Yes
9	Bedroom	10'4" x 11'4"	104 sq. ft	Yes
10	Dining Area	9'3" x 7'0"	64 sq. ft	Yes
11	Bedroom	12'3" x 10'7"	130 sq. ft	Yes
12	Primary Bedroom	13'8" x 11'2"	152 sq. ft	Yes
13	Hall	8'9" x 5'3"	30 sq. ft	Yes
14	Kitchen	8'11" x 13'6"	120 sq. ft	Yes
15	Living Room	14'5" x 11'2"	160 sq. ft	Yes
16	Bath	6'9" x 7'11"	47 sq. ft	Yes

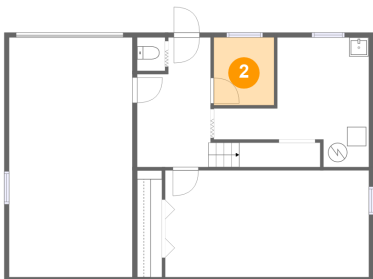
1 Floor 1 - Electrical Room



Dimensions: 16'2" x 13'6"
Area: 137 sq. ft
Counted as living area: No

Heated: No
Finished: No
Enclosed: Yes
Contiguous: Yes
Permitted: Yes
Wet space: No
Addition: No
Conversion: No

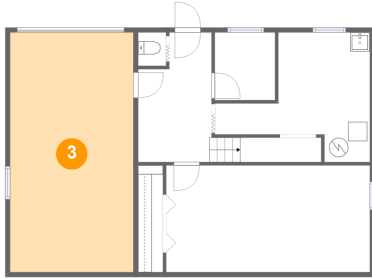
2 Floor 1 - Room



Dimensions: 6'4" x 7'1"
Area: 45 sq. ft
Counted as living area: Yes

Heated: Yes
Finished: Yes
Enclosed: Yes
Contiguous: Yes
Permitted: Yes
Wet space: No
Addition: No
Conversion: No

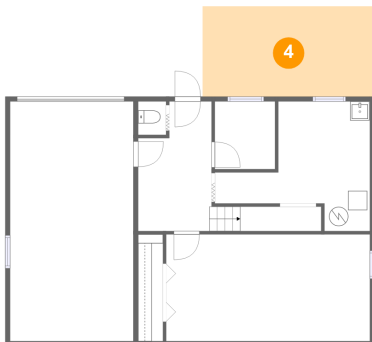
3 Floor 1 - Garage



Dimensions: 12'11" x 25'0"
Area: 322 sq. ft
Counted as living area: No

Heated: No
Finished: No
Enclosed: Yes
Contiguous: Yes
Permitted: Yes
Wet space: No
Addition: No
Conversion: No

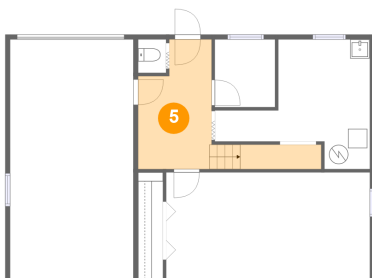
4 Floor 1 - Covered Patio



Dimensions: 18'0" x 9'5"
Area: 170 sq. ft
Counted as living area: No

Heated: No
Finished: Yes
Enclosed: No
Contiguous: Yes
Permitted: Yes
Wet space: No
Addition: No
Conversion: No

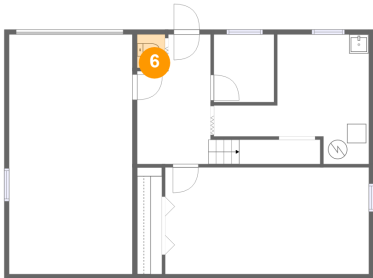
5 Floor 1 - Hall



Dimensions: 7'8" x 13'6"
Area: 121 sq. ft
Counted as living area: Yes

Heated: Yes
Finished: Yes
Enclosed: Yes
Contiguous: Yes
Permitted: Yes
Wet space: No
Addition: No
Conversion: No

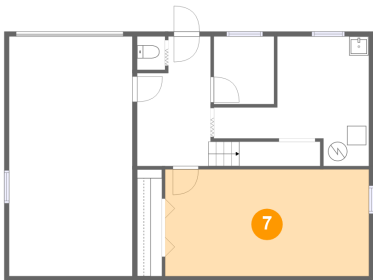
6 Floor 1 - WC



Dimensions: 2'11" x 3'6"
Area: 10 sq. ft
Counted as living area: Yes

Heated: Yes
Finished: Yes
Enclosed: Yes
Contiguous: Yes
Permitted: Yes
Wet space: Yes
Addition: No
Conversion: No

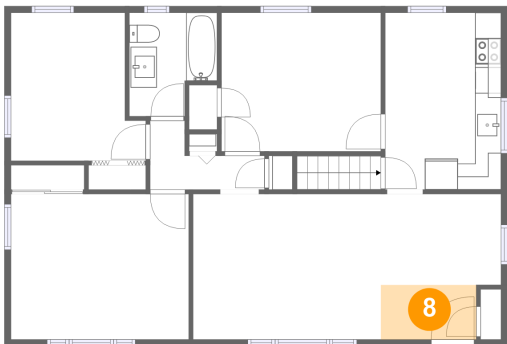
7 Floor 1 - Recreation Room



Dimensions: 21'3" x 11'1"
Area: 237 sq. ft
Counted as living area: Yes

Heated: Yes
Finished: Yes
Enclosed: Yes
Contiguous: Yes
Permitted: Yes
Wet space: No
Addition: No
Conversion: No

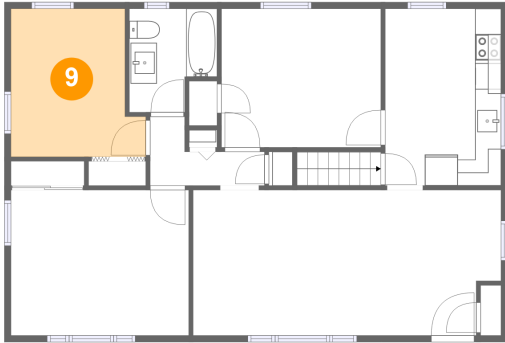
8 Floor 2 - Foyer



Dimensions: 7'4" x 4'2"
Area: 31 sq. ft
Counted as living area: Yes

Heated: Yes
Finished: Yes
Enclosed: Yes
Contiguous: Yes
Permitted: Yes
Wet space: No
Addition: No
Conversion: No

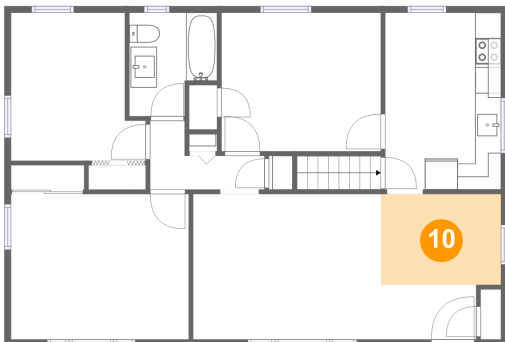
9 Floor 2 - Bedroom



Dimensions: 10'4" x 11'4"
Area: 104 sq. ft
Counted as living area: Yes

Heated: Yes
Finished: Yes
Enclosed: Yes
Contiguous: Yes
Permitted: Yes
Wet space: No
Addition: No
Conversion: No

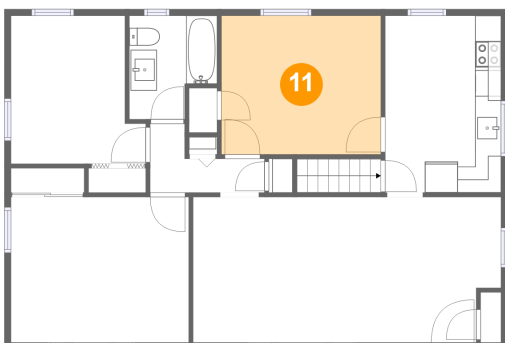
10 Floor 2 - Dining Area



Dimensions: 9'3" x 7'0"
Area: 64 sq. ft
Counted as living area: Yes

Heated: Yes
Finished: Yes
Enclosed: Yes
Contiguous: Yes
Permitted: Yes
Wet space: No
Addition: No
Conversion: No

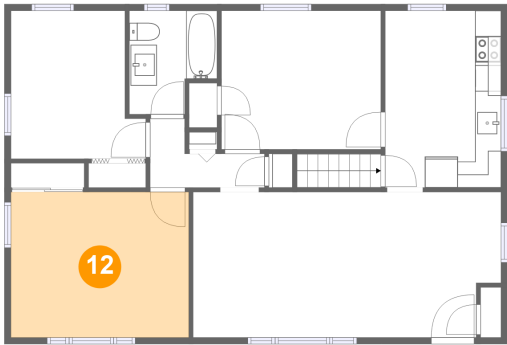
11 Floor 2 - Bedroom



Dimensions: 12'3" x 10'7"
Area: 130 sq. ft
Counted as living area: Yes

Heated: Yes
Finished: Yes
Enclosed: Yes
Contiguous: Yes
Permitted: Yes
Wet space: No
Addition: No
Conversion: No

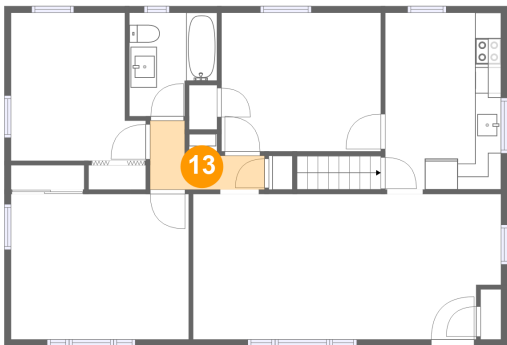
12 Floor 2 - Primary Bedroom



Dimensions: 13'8" x 11'2"
Area: 152 sq. ft
Counted as living area: Yes

Heated: Yes
Finished: Yes
Enclosed: Yes
Contiguous: Yes
Permitted: Yes
Wet space: No
Addition: No
Conversion: No

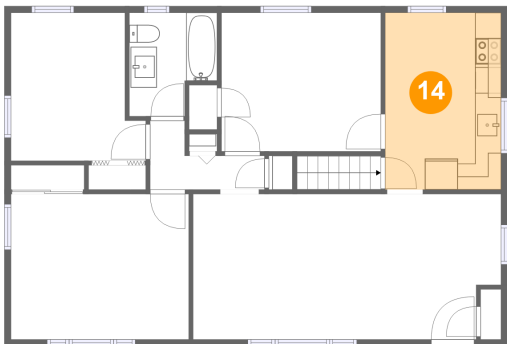
13 Floor 2 - Hall



Dimensions: 8'9" x 5'3"
Area: 30 sq. ft
Counted as living area: Yes

Heated: Yes
Finished: Yes
Enclosed: Yes
Contiguous: Yes
Permitted: Yes
Wet space: No
Addition: No
Conversion: No

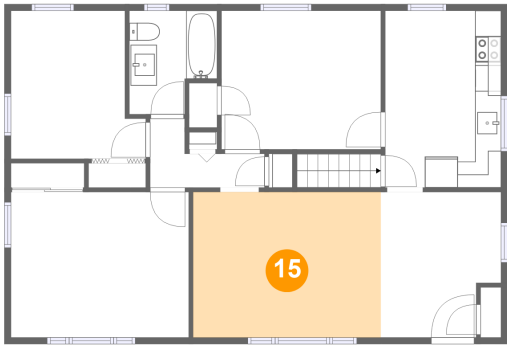
14 Floor 2 - Kitchen



Dimensions: 8'11" x 13'6"
Area: 120 sq. ft
Counted as living area: Yes

Heated: Yes
Finished: Yes
Enclosed: Yes
Contiguous: Yes
Permitted: Yes
Wet space: No
Addition: No
Conversion: No

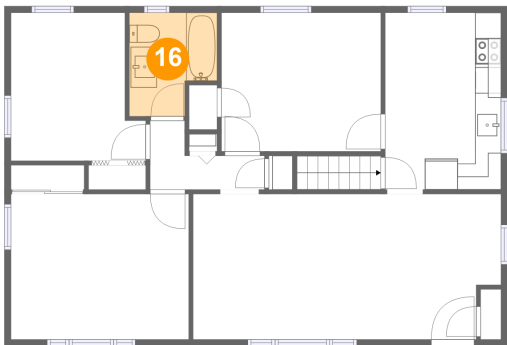
15 Floor 2 - Living Room



Dimensions: 14'5" x 11'2"
Area: 160 sq. ft
Counted as living area: Yes

Heated: Yes
Finished: Yes
Enclosed: Yes
Contiguous: Yes
Permitted: Yes
Wet space: No
Addition: No
Conversion: No

16 Floor 2 - Bath



Dimensions: 6'9" x 7'11"
Area: 47 sq. ft
Counted as living area: Yes

Heated: Yes
Finished: Yes
Enclosed: Yes
Contiguous: Yes
Permitted: Yes
Wet space: Yes
Addition: No
Conversion: No