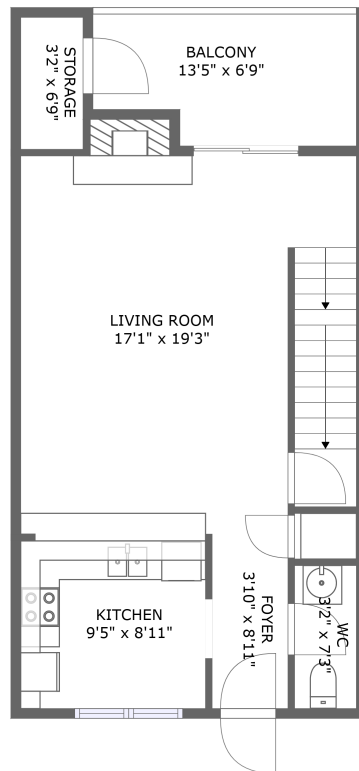


Home report

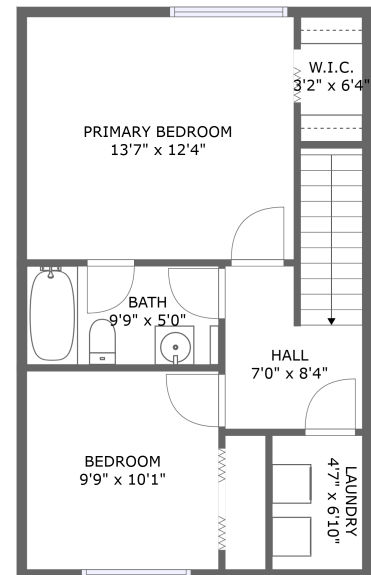
7311 Maple Court Southwest, Woods Crossing, Cave Spring,
Roanoke, Roanoke County, Virginia, United States, 24018



FLOOR 1



FLOOR 2



FLOOR 3

Total Area: 1410 sq. ft

Below Ground: 438 sq. ft, Floor 2: 491 sq. ft, Floor 3: 481 sq. ft

Excluded: Utility 30 sq. ft, Screened porch 75 sq. ft, Storage 21 sq. ft, Balcony 82 sq. ft,
Walls: 114 sq. ft

Property summary



Home report

7311 Maple Court Southwest, Woods Crossing, Cave Spring, Roanoke, Roanoke County, Virginia, United States, 24018



Room dimensions

Floor 1 Below ground

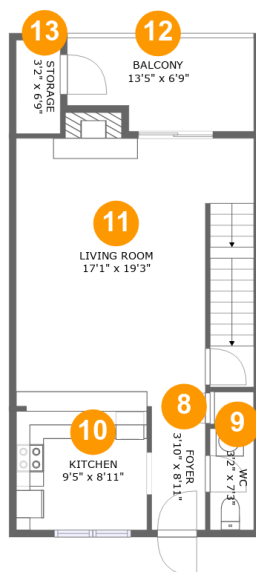
Total:438sqft

Excluded: 105sqft

#		Max Dimensions	sqft	Included
1	Bath	6'9" x 5'10"	33 sq. ft	Yes
2	Hall	3'4" x 14'0"	47 sq. ft	Yes
3	Utility	3'2" x 9'7"	30 sq. ft	No
4	WC	3'2" x 6'6"	21 sq. ft	Yes
5	Bedroom	9'11" x 9'10"	88 sq. ft	Yes
6	Screened Porch	11'6" x 6'7"	75 sq. ft	No
7	Recreation Room	17'1" x 13'4"	218 sq. ft	Yes

Home report

7311 Maple Court Southwest, Woods Crossing, Cave Spring, Roanoke, Roanoke County, Virginia, United States, 24018



Room dimensions

Floor 2

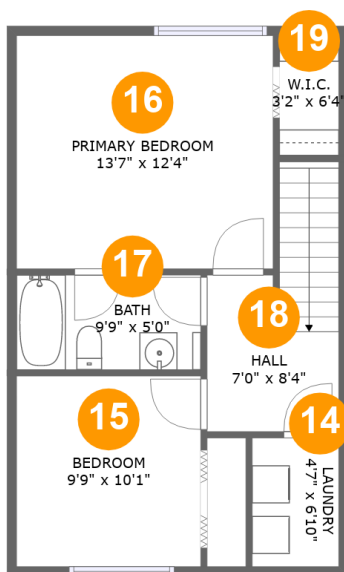
Total:491sqft

Excluded: 103sqft

#		Max Dimensions	sqft	Included
8	Foyer	3'10" x 8'11"	34 sq. ft	Yes
9	WC	3'2" x 7'3"	23 sq. ft	Yes
10	Kitchen	9'5" x 8'11"	83 sq. ft	Yes
11	Living Room	17'1" x 19'3"	328 sq. ft	Yes
12	Balcony	13'5" x 6'9"	82 sq. ft	No
13	Storage	3'2" x 6'9"	21 sq. ft	No

Home report

7311 Maple Court Southwest, Woods Crossing, Cave Spring, Roanoke, Roanoke County, Virginia, United States, 24018



Room dimensions

Floor 3

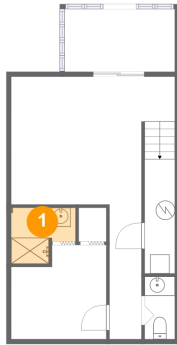
Total:481sqft

Excluded: 0sqft

#		Max Dimensions	sqft	Included
14	Laundry	4'7" x 6'10"	31 sq. ft	Yes
15	Bedroom	9'9" x 10'1"	99 sq. ft	Yes
16	Primary Bedroom	13'7" x 12'4"	168 sq. ft	Yes
17	Bath	9'9" x 5'0"	49 sq. ft	Yes
18	Hall	7'0" x 8'4"	76 sq. ft	Yes
19	W.I.C.	3'2" x 6'4"	20 sq. ft	Yes

7311 Maple Court Southwest, Woods Crossing, Cave Spring,
Roanoke, Roanoke County, Virginia, United States, 24018

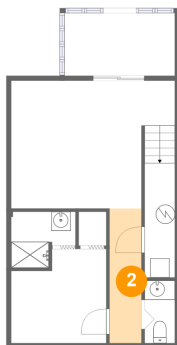
1 Floor 1 - Bath



Max Dimensions: 6'9" x
5'10"
Calculated Area: 33 sq. ft
Included: Yes

Heated: Yes
Finished: Yes
Enclosed: Yes
Contiguous:
Yes
Permitted: Yes
Wet space: Yes
Addition: No
Conversion: No

2 Floor 1 - Hall

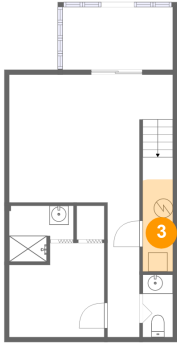


Max Dimensions: 3'4" x
14'0"
Calculated Area: 47 sq. ft
Included: Yes

Heated: Yes
Finished: Yes
Enclosed: Yes
Contiguous:
Yes
Permitted: Yes
Wet space: No
Addition: No
Conversion: No

7311 Maple Court Southwest, Woods Crossing, Cave Spring, Roanoke, Roanoke County, Virginia, United States, 24018

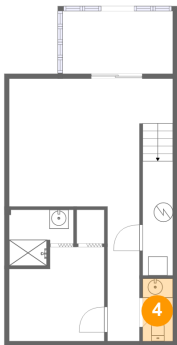
3 Floor 1 - Utility



Max Dimensions: 3'2" x 9'7"
Calculated Area: 30 sq. ft
Included: No

Heated: Yes
Finished: No
Enclosed: Yes
Contiguous: Yes
Permitted: Yes
Wet space: No
Addition: No
Conversion: No

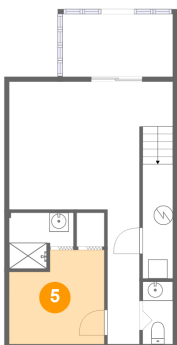
4 Floor 1 - WC



Max Dimensions: 3'2" x 6'6"
Calculated Area: 21 sq. ft
Included: Yes

Heated: Yes
Finished: Yes
Enclosed: Yes
Contiguous: Yes
Permitted: Yes
Wet space: Yes
Addition: No
Conversion: No

5 Floor 1 - Bedroom

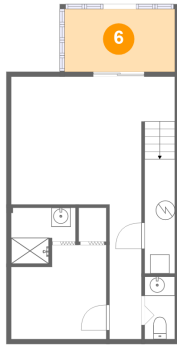


Max Dimensions: 9'11" x 9'10"
Calculated Area: 88 sq. ft
Included: Yes

Heated: Yes
Finished: Yes
Enclosed: Yes
Contiguous: Yes
Permitted: Yes
Wet space: No
Addition: No
Conversion: No

7311 Maple Court Southwest, Woods Crossing, Cave Spring,
Roanoke, Roanoke County, Virginia, United States, 24018

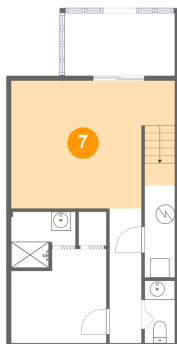
6 Floor 1 - Screened Porch



Max Dimensions: 11'6" x 6'7"
Calculated Area: 75 sq. ft
Included: No

Heated: No
Finished: No
Enclosed: No
Contiguous: Yes
Permitted: Yes
Wet space: No
Addition: No
Conversion: No

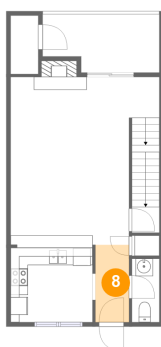
7 Floor 1 - Recreation Room



Max Dimensions: 17'1" x 13'4"
Calculated Area: 218 sq. ft
Included: Yes

Heated: Yes
Finished: Yes
Enclosed: Yes
Contiguous: Yes
Permitted: Yes
Wet space: No
Addition: No
Conversion: No

8 Floor 2 - Foyer

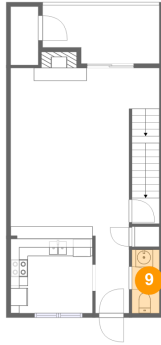


Max Dimensions: 3'10" x 8'11"
Calculated Area: 34 sq. ft
Included: Yes

Heated: Yes
Finished: Yes
Enclosed: Yes
Contiguous: Yes
Permitted: Yes
Wet space: No
Addition: No
Conversion: No

7311 Maple Court Southwest, Woods Crossing, Cave Spring, Roanoke, Roanoke County, Virginia, United States, 24018

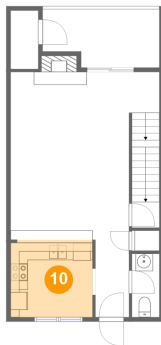
9 Floor 2 - WC



Max Dimensions: 3'2" x 7'3"
Calculated Area: 23 sq. ft
Included: Yes

Heated: Yes
Finished: Yes
Enclosed: Yes
Contiguous: Yes
Permitted: Yes
Wet space: Yes
Addition: No
Conversion: No

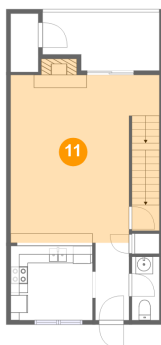
10 Floor 2 - Kitchen



Max Dimensions: 9'5" x 8'11"
Calculated Area: 83 sq. ft
Included: Yes

Heated: Yes
Finished: Yes
Enclosed: Yes
Contiguous: Yes
Permitted: Yes
Wet space: No
Addition: No
Conversion: No

11 Floor 2 - Living Room

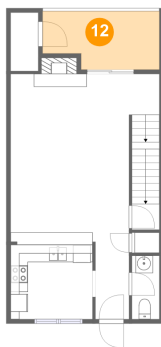


Max Dimensions: 17'1" x 19'3"
Calculated Area: 328 sq. ft
Included: Yes

Heated: Yes
Finished: Yes
Enclosed: Yes
Contiguous: Yes
Permitted: Yes
Wet space: No
Addition: No
Conversion: No

7311 Maple Court Southwest, Woods Crossing, Cave Spring, Roanoke, Roanoke County, Virginia, United States, 24018

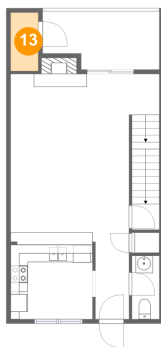
12 Floor 2 - Balcony



Max Dimensions: 13'5" x 6'9"
Calculated Area: 82 sq. ft
Included: No

Heated: No
Finished: Yes
Enclosed: No
Contiguous: Yes
Permitted: Yes
Wet space: No
Addition: No
Conversion: No

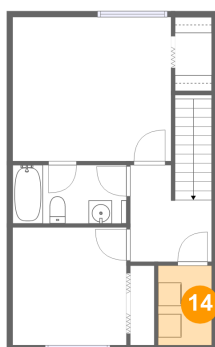
13 Floor 2 - Storage



Max Dimensions: 3'2" x 6'9"
Calculated Area: 21 sq. ft
Included: No

Heated: No
Finished: No
Enclosed: No
Contiguous: Yes
Permitted: Yes
Wet space: No
Addition: No
Conversion: No

14 Floor 3 - Laundry

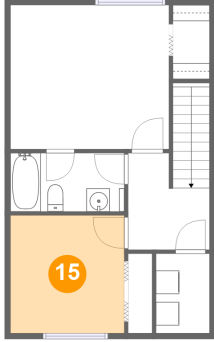


Max Dimensions: 4'7" x 6'10"
Calculated Area: 31 sq. ft
Included: Yes

Heated: Yes
Finished: Yes
Enclosed: Yes
Contiguous: Yes
Permitted: Yes
Wet space: No
Addition: No
Conversion: No

7311 Maple Court Southwest, Woods Crossing, Cave Spring,
Roanoke, Roanoke County, Virginia, United States, 24018

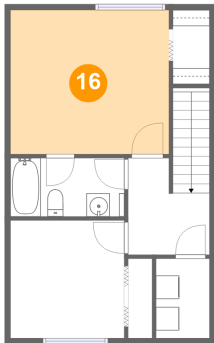
15 Floor 3 - Bedroom



Max Dimensions: 9'9" x 10'1"
Calculated Area: 99 sq. ft
Included: Yes

Heated: Yes
Finished: Yes
Enclosed: Yes
Contiguous: Yes
Permitted: Yes
Wet space: No
Addition: No
Conversion: No

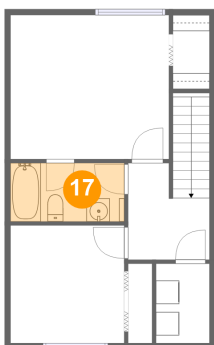
16 Floor 3 - Primary Bedroom



Max Dimensions: 13'7" x 12'4"
Calculated Area: 168 sq. ft
Included: Yes

Heated: Yes
Finished: Yes
Enclosed: Yes
Contiguous: Yes
Permitted: Yes
Wet space: No
Addition: No
Conversion: No

17 Floor 3 - Bath

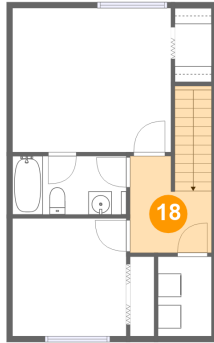


Max Dimensions: 9'9" x 5'0"
Calculated Area: 49 sq. ft
Included: Yes

Heated: Yes
Finished: Yes
Enclosed: Yes
Contiguous: Yes
Permitted: Yes
Wet space: Yes
Addition: No
Conversion: No

7311 Maple Court Southwest, Woods Crossing, Cave Spring,
Roanoke, Roanoke County, Virginia, United States, 24018

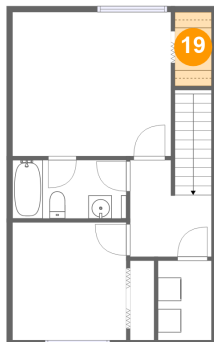
18 Floor 3 - Hall



Max Dimensions: 7'0" x 8'4"
Calculated Area: 76 sq. ft
Included: Yes

Heated: Yes
Finished: Yes
Enclosed: Yes
Contiguous: Yes
Permitted: Yes
Wet space: No
Addition: No
Conversion: No

19 Floor 3 - W.I.C.



Max Dimensions: 3'2" x 6'4"
Calculated Area: 20 sq. ft
Included: Yes

Heated: Yes
Finished: Yes
Enclosed: Yes
Contiguous: Yes
Permitted: Yes
Wet space: No
Addition: No
Conversion: No