



Home report


5378 Chaucers Court, Highfields, Cave Spring, Roanoke,  
Roanoke County, Virginia, United States, 24018





Property summary


**2** Garages


**4** Bedrooms

**3** Bathrooms

**1** Half baths

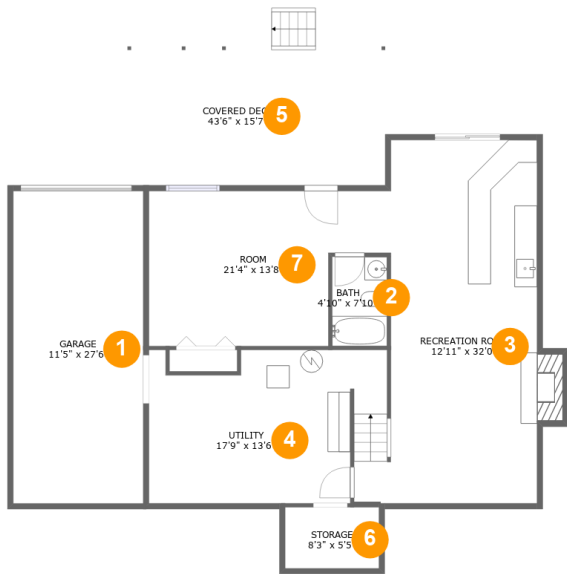
**3** Floors

**3,566** Gross living area sqft

**5,929** Total sqft

Home report

5378 Chaucers Court, Highfields, Cave Spring, Roanoke,  
Roanoke County, Virginia, United States, 24018



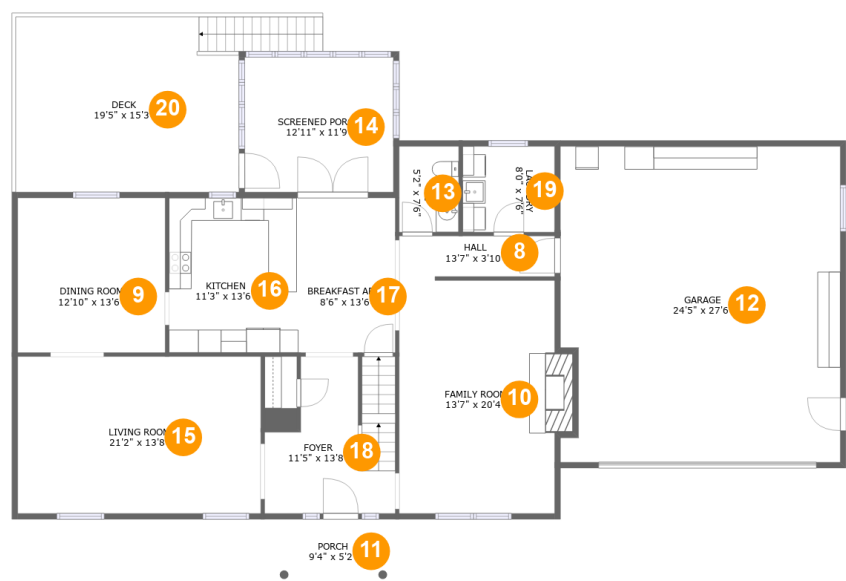
Room dimensions

Floor 1 Total sqft: 1926    Living area: 776

#		Max Dimensions	sqft	Included
1	Garage	11'5" x 27'6"	315 sq. ft	No
2	Bath	4'10" x 7'10"	38 sq. ft	Yes
3	Recreation Room	12'11" x 32'0"	425 sq. ft	Yes
4	Utility	17'9" x 13'6"	268 sq. ft	No
5	Covered Deck	43'6" x 15'7"	453 sq. ft	No
6	Storage	8'3" x 5'5"	45 sq. ft	No
7	Room	21'4" x 13'8"	246 sq. ft	Yes

Home report

5378 Chaucers Court, Highfields, Cave Spring, Roanoke,  
Roanoke County, Virginia, United States, 24018



Room dimensions

Floor 2 Total sqft: 2641    Living area: 1428

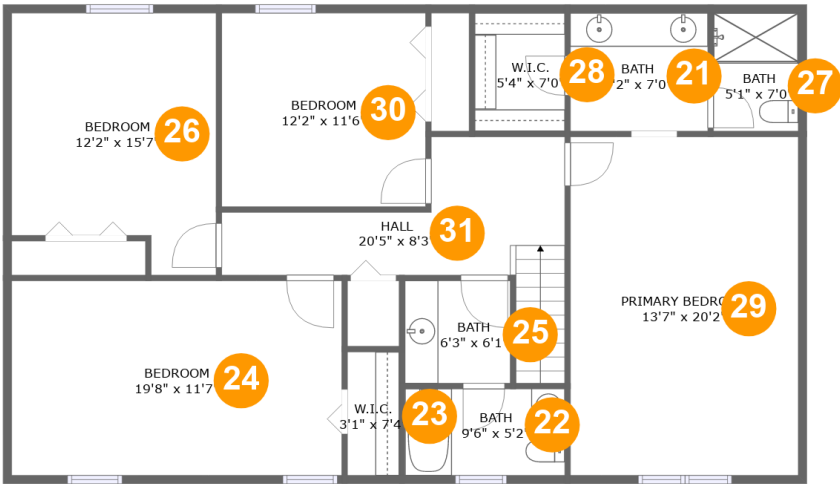
#		Max Dimensions	sqft	Included
8	Hall	13'7" x 3'10"	49 sq. ft	Yes
9	Dining Room	12'10" x 13'6"	173 sq. ft	Yes
10	Family Room	13'7" x 20'4"	286 sq. ft	Yes
11	Porch	9'4" x 5'2"	49 sq. ft	No
12	Garage	24'5" x 27'6"	659 sq. ft	No
13	WC	5'2" x 7'6"	38 sq. ft	Yes
14	Screened Porch	12'11" x 11'9"	152 sq. ft	No
15	Living Room	21'2" x 13'8"	290 sq. ft	Yes
16	Kitchen	11'3" x 13'6"	152 sq. ft	Yes
17	Breakfast Area	8'6" x 13'6"	114 sq. ft	Yes
18	Foyer	11'5" x 13'8"	133 sq. ft	Yes

Home report

5378 Chaucers Court, Highfields, Cave Spring, Roanoke,  
Roanoke County, Virginia, United States, 24018

#		Max Dimensions	sqft	Included
19	Laundry	8'0" x 7'6"	60 sq. ft	Yes
20	Deck	19'5" x 15'3"	285 sq. ft	No

5378 Chaucers Court, Highfields, Cave Spring, Roanoke,  
Roanoke County, Virginia, United States, 24018



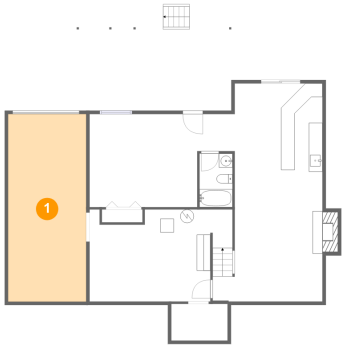
Room dimensions

Floor 3 Total sqft: 1362    Living area: 1362

#		Max Dimensions	sqft	Included
21	Bath	8'2" x 7'0"	57 sq. ft	Yes
22	Bath	9'6" x 5'2"	49 sq. ft	Yes
23	W.I.C.	3'1" x 7'4"	23 sq. ft	Yes
24	Bedroom	19'8" x 11'7"	227 sq. ft	Yes
25	Bath	6'3" x 6'1"	38 sq. ft	Yes
26	Bedroom	12'2" x 15'7"	170 sq. ft	Yes
27	Bath	5'1" x 7'0"	35 sq. ft	Yes
28	W.I.C.	5'4" x 7'0"	38 sq. ft	Yes
29	Primary Bedroom	13'7" x 20'2"	273 sq. ft	Yes
30	Bedroom	12'2" x 11'6"	140 sq. ft	Yes
31	Hall	20'5" x 8'3"	131 sq. ft	Yes

5378 Chaucers Court, Highfields, Cave Spring, Roanoke,  
Roanoke County, Virginia, United States, 24018

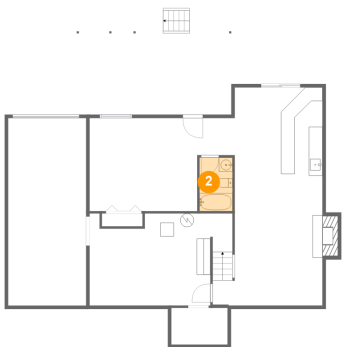
1 Floor 1 - Garage



Max Dimensions: 11'5" x 27'6"  
Calculated Area: 315 sq. ft  
Included: No

Heated: No  
Finished: No  
Enclosed: Yes  
Contiguous: Yes  
Permitted: Yes  
Wet space: No  
Addition: No  
Conversion: No

2 Floor 1 - Bath

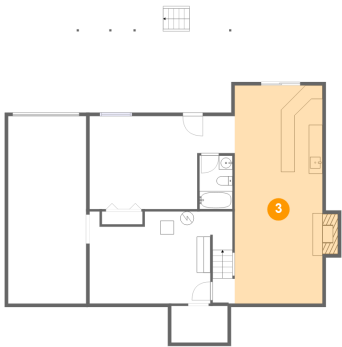


Max Dimensions: 4'10" x 7'10"  
Calculated Area: 38 sq. ft  
Included: Yes

Heated: Yes  
Finished: Yes  
Enclosed: Yes  
Contiguous: Yes  
Permitted: Yes  
Wet space: Yes  
Addition: No  
Conversion: No

5378 Chaucers Court, Highfields, Cave Spring, Roanoke,  
Roanoke County, Virginia, United States, 24018

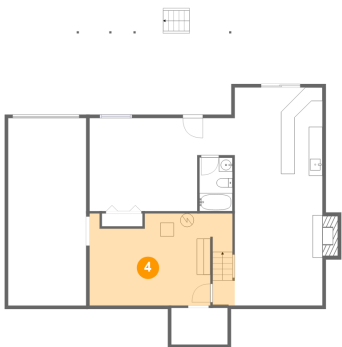
3 Floor 1 - Recreation Room



Max Dimensions: 12'11" x 32'0"  
Calculated Area: 425 sq. ft  
Included: Yes

Heated: Yes  
Finished: Yes  
Enclosed: Yes  
Contiguous: Yes  
Permitted: Yes  
Wet space: No  
Addition: No  
Conversion: No

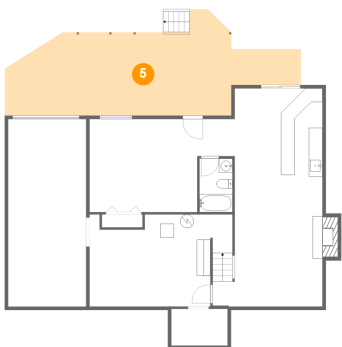
4 Floor 1 - Utility



Max Dimensions: 17'9" x 13'6"  
Calculated Area: 268 sq. ft  
Included: No

Heated: Yes  
Finished: No  
Enclosed: Yes  
Contiguous: Yes  
Permitted: Yes  
Wet space: No  
Addition: No  
Conversion: No

5 Floor 1 - Covered Deck

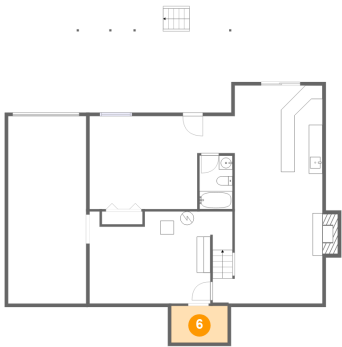


Max Dimensions: 43'6" x 15'7"  
Calculated Area: 453 sq. ft  
Included: No

Heated: No  
Finished: Yes  
Enclosed: No  
Contiguous: Yes  
Permitted: Yes  
Wet space: No  
Addition: No  
Conversion: No

5378 Chaucers Court, Highfields, Cave Spring, Roanoke,  
Roanoke County, Virginia, United States, 24018

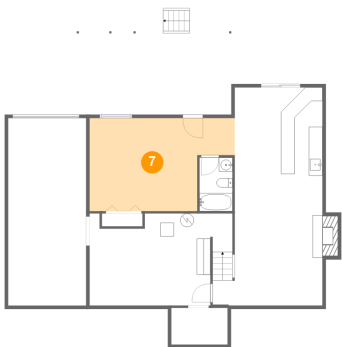
6 Floor 1 - Storage



Max Dimensions: 8'3" x 5'5"  
Calculated Area: 45 sq. ft  
Included: No

Heated: No  
Finished: No  
Enclosed: No  
Contiguous: Yes  
Permitted: Yes  
Wet space: No  
Addition: No  
Conversion: No

7 Floor 1 - Room



Max Dimensions: 21'4" x 13'8"  
Calculated Area: 246 sq. ft  
Included: Yes

Heated: Yes  
Finished: Yes  
Enclosed: Yes  
Contiguous: Yes  
Permitted: Yes  
Wet space: No  
Addition: No  
Conversion: No

8 Floor 2 - Hall



Max Dimensions: 13'7" x 3'10"  
Calculated Area: 49 sq. ft  
Included: Yes

Heated: Yes  
Finished: Yes  
Enclosed: Yes  
Contiguous: Yes  
Permitted: Yes  
Wet space: No  
Addition: No  
Conversion: No



5378 Chaucers Court, Highfields, Cave Spring, Roanoke,  
Roanoke County, Virginia, United States, 24018

9 Floor 2 - Dining Room



Max Dimensions: 12'10" x 13'6"  
Calculated Area: 173 sq. ft  
Included: Yes

Heated: Yes  
Finished: Yes  
Enclosed: Yes  
Contiguous: Yes  
Permitted: Yes  
Wet space: No  
Addition: No  
Conversion: No

10 Floor 2 - Family Room



Max Dimensions: 13'7" x 20'4"  
Calculated Area: 286 sq. ft  
Included: Yes

Heated: Yes  
Finished: Yes  
Enclosed: Yes  
Contiguous: Yes  
Permitted: Yes  
Wet space: No  
Addition: No  
Conversion: No

11 Floor 2 - Porch



Max Dimensions: 9'4" x 5'2"  
Calculated Area: 49 sq. ft  
Included: No

Heated: No  
Finished: Yes  
Enclosed: No  
Contiguous: Yes  
Permitted: Yes  
Wet space: No  
Addition: No  
Conversion: No

5378 Chaucers Court, Highfields, Cave Spring, Roanoke,  
Roanoke County, Virginia, United States, 24018

12 Floor 2 - Garage



Max Dimensions: 24'5" x 27'6"  
Calculated Area: 659 sq. ft  
Included: No

Heated: No  
Finished: No  
Enclosed: Yes  
Contiguous: Yes  
Permitted: Yes  
Wet space: No  
Addition: No  
Conversion: No

13 Floor 2 - WC



Max Dimensions: 5'2" x 7'6"  
Calculated Area: 38 sq. ft  
Included: Yes

Heated: Yes  
Finished: Yes  
Enclosed: Yes  
Contiguous: Yes  
Permitted: Yes  
Wet space: Yes  
Addition: No  
Conversion: No

14 Floor 2 - Screened Porch



Max Dimensions: 12'11" x 11'9"  
Calculated Area: 152 sq. ft  
Included: No

Heated: No  
Finished: Yes  
Enclosed: No  
Contiguous: Yes  
Permitted: Yes  
Wet space: No  
Addition: No  
Conversion: No

5378 Chaucers Court, Highfields, Cave Spring, Roanoke,  
Roanoke County, Virginia, United States, 24018

15 Floor 2 - Living Room



Max Dimensions: 21'2" x 13'8"  
Calculated Area: 290 sq. ft  
Included: Yes

Heated: Yes  
Finished: Yes  
Enclosed: Yes  
Contiguous: Yes  
Permitted: Yes  
Wet space: No  
Addition: No  
Conversion: No

16 Floor 2 - Kitchen



Max Dimensions: 11'3" x 13'6"  
Calculated Area: 152 sq. ft  
Included: Yes

Heated: Yes  
Finished: Yes  
Enclosed: Yes  
Contiguous: Yes  
Permitted: Yes  
Wet space: No  
Addition: No  
Conversion: No

17 Floor 2 - Breakfast Area



Max Dimensions: 8'6" x 13'6"  
Calculated Area: 114 sq. ft  
Included: Yes

Heated: Yes  
Finished: Yes  
Enclosed: Yes  
Contiguous: Yes  
Permitted: Yes  
Wet space: No  
Addition: No  
Conversion: No

5378 Chaucers Court, Highfields, Cave Spring, Roanoke,  
Roanoke County, Virginia, United States, 24018

18 Floor 2 - Foyer



Max Dimensions: 11'5" x 13'8"  
Calculated Area: 133 sq. ft  
Included: Yes

Heated: Yes  
Finished: Yes  
Enclosed: Yes  
Contiguous: Yes  
Permitted: Yes  
Wet space: No  
Addition: No  
Conversion: No

19 Floor 2 - Laundry



Max Dimensions: 8'0" x 7'6"  
Calculated Area: 60 sq. ft  
Included: Yes

Heated: Yes  
Finished: Yes  
Enclosed: Yes  
Contiguous: Yes  
Permitted: Yes  
Wet space: No  
Addition: No  
Conversion: No

20 Floor 2 - Deck

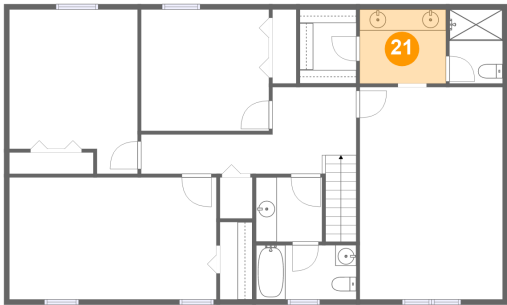


Max Dimensions: 19'5" x 15'3"  
Calculated Area: 285 sq. ft  
Included: No

Heated: No  
Finished: Yes  
Enclosed: No  
Contiguous: Yes  
Permitted: Yes  
Wet space: No  
Addition: No  
Conversion: No

5378 Chaucers Court, Highfields, Cave Spring, Roanoke,  
Roanoke County, Virginia, United States, 24018

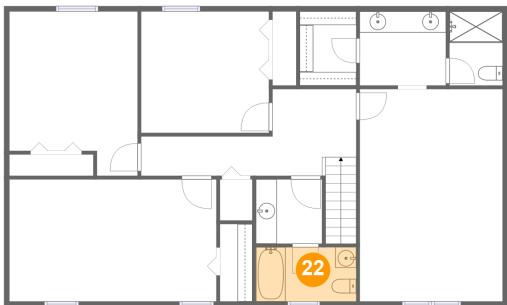
21 Floor 3 - Bath



Max Dimensions: 8'2" x 7'0"  
Calculated Area: 57 sq. ft  
Included: Yes

Heated: Yes  
Finished: Yes  
Enclosed: Yes  
Contiguous: Yes  
Permitted: Yes  
Wet space: Yes  
Addition: No  
Conversion: No

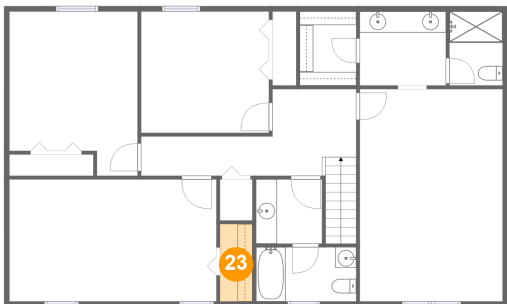
22 Floor 3 - Bath



Max Dimensions: 9'6" x 5'2"  
Calculated Area: 49 sq. ft  
Included: Yes

Heated: Yes  
Finished: Yes  
Enclosed: Yes  
Contiguous: Yes  
Permitted: Yes  
Wet space: Yes  
Addition: No  
Conversion: No

23 Floor 3 - W.I.C.

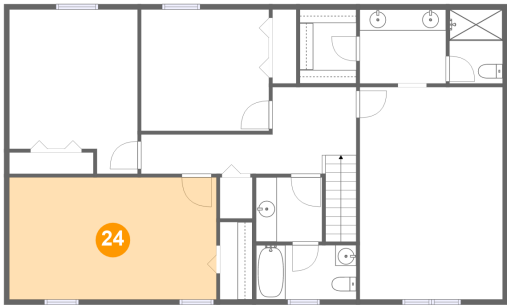


Max Dimensions: 3'1" x 7'4"  
Calculated Area: 23 sq. ft  
Included: Yes

Heated: Yes  
Finished: Yes  
Enclosed: Yes  
Contiguous: Yes  
Permitted: Yes  
Wet space: No  
Addition: No  
Conversion: No

5378 Chaucers Court, Highfields, Cave Spring, Roanoke,  
Roanoke County, Virginia, United States, 24018

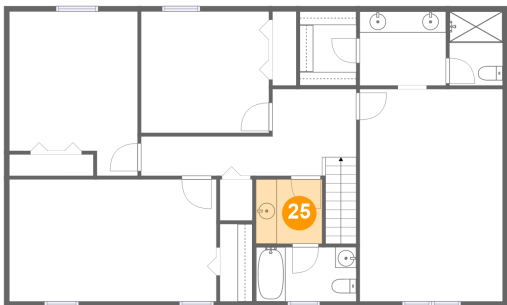
24 Floor 3 - Bedroom



Max Dimensions: 19'8" x 11'7"  
Calculated Area: 227 sq. ft  
Included: Yes

Heated: Yes  
Finished: Yes  
Enclosed: Yes  
Contiguous: Yes  
Permitted: Yes  
Wet space: No  
Addition: No  
Conversion: No

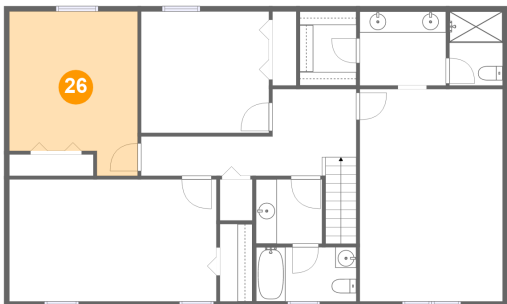
25 Floor 3 - Bath



Max Dimensions: 6'3" x 6'1"  
Calculated Area: 38 sq. ft  
Included: Yes

Heated: Yes  
Finished: Yes  
Enclosed: Yes  
Contiguous: Yes  
Permitted: Yes  
Wet space: Yes  
Addition: No  
Conversion: No

26 Floor 3 - Bedroom



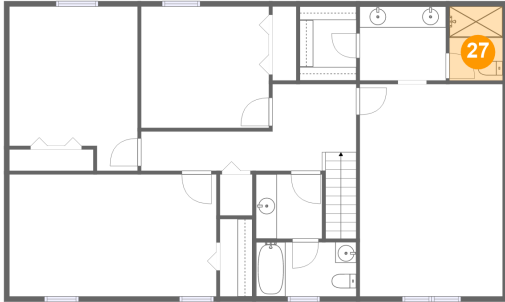
Max Dimensions: 12'2" x 15'7"  
Calculated Area: 170 sq. ft  
Included: Yes

Heated: Yes  
Finished: Yes  
Enclosed: Yes  
Contiguous: Yes  
Permitted: Yes  
Wet space: No  
Addition: No  
Conversion: No

## Home report

5378 Chaucers Court, Highfields, Cave Spring, Roanoke,  
Roanoke County, Virginia, United States, 24018

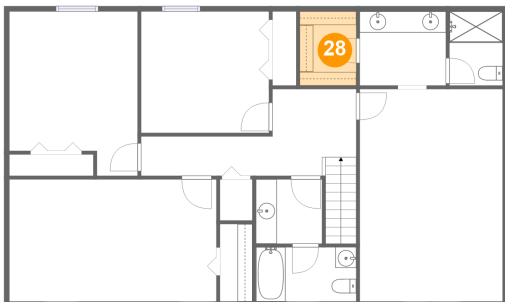
### 27 Floor 3 - Bath



Max Dimensions: 5'1" x 7'0"  
Calculated Area: 35 sq. ft  
Included: Yes

Heated: Yes  
Finished: Yes  
Enclosed: Yes  
Contiguous: Yes  
Permitted: Yes  
Wet space: Yes  
Addition: No  
Conversion: No

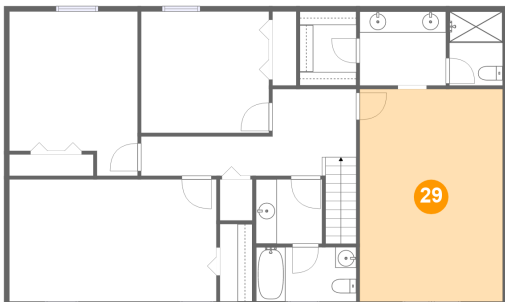
### 28 Floor 3 - W.I.C.



Max Dimensions: 5'4" x 7'0"  
Calculated Area: 38 sq. ft  
Included: Yes

Heated: Yes  
Finished: Yes  
Enclosed: Yes  
Contiguous: Yes  
Permitted: Yes  
Wet space: No  
Addition: No  
Conversion: No

### 29 Floor 3 - Primary Bedroom

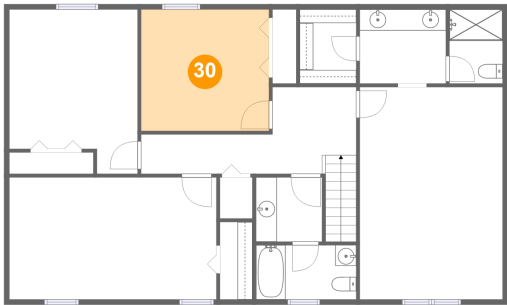


Max Dimensions: 13'7" x  
20'2"  
Calculated Area: 273 sq. ft  
Included: Yes

Heated: Yes  
Finished: Yes  
Enclosed: Yes  
Contiguous:  
Yes  
Permitted: Yes  
Wet space: No  
Addition: No  
Conversion: No

5378 Chaucers Court, Highfields, Cave Spring, Roanoke,  
Roanoke County, Virginia, United States, 24018

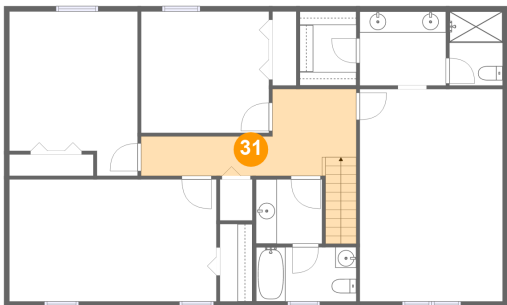
30 Floor 3 - Bedroom



Max Dimensions: 12'2" x 11'6"  
Calculated Area: 140 sq. ft  
Included: Yes

Heated: Yes  
Finished: Yes  
Enclosed: Yes  
Contiguous: Yes  
Permitted: Yes  
Wet space: No  
Addition: No  
Conversion: No

31 Floor 3 - Hall



Max Dimensions: 20'5" x 8'3"  
Calculated Area: 131 sq. ft  
Included: Yes

Heated: Yes  
Finished: Yes  
Enclosed: Yes  
Contiguous: Yes  
Permitted: Yes  
Wet space: No  
Addition: No  
Conversion: No