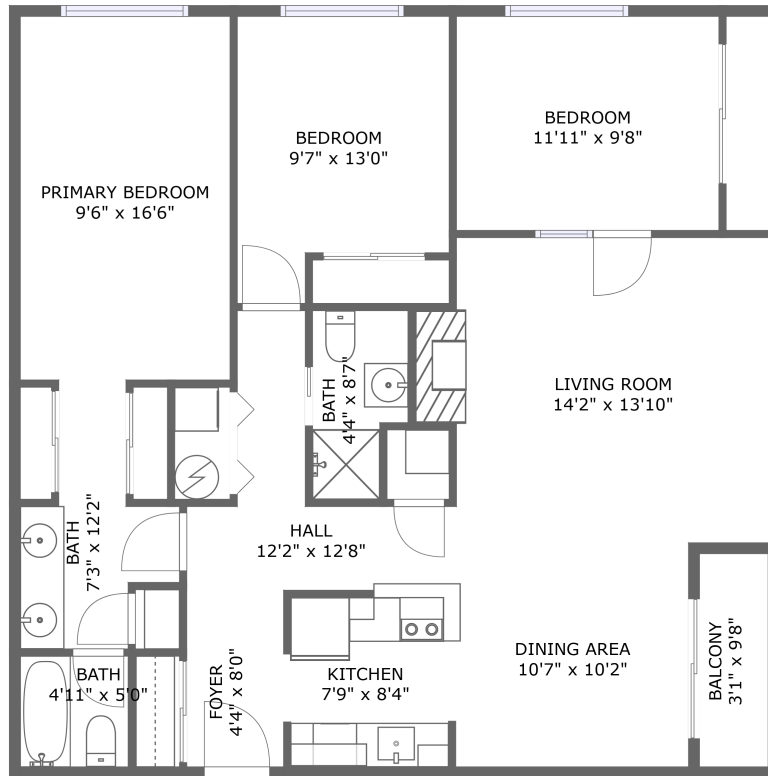



6600 Southeast Division Street, South Tabor, Portland, Multnomah County, Oregon, United States,



FLOOR 1

Property summary

 **0** Garages

 **3** Bedrooms

 **2** Bathrooms

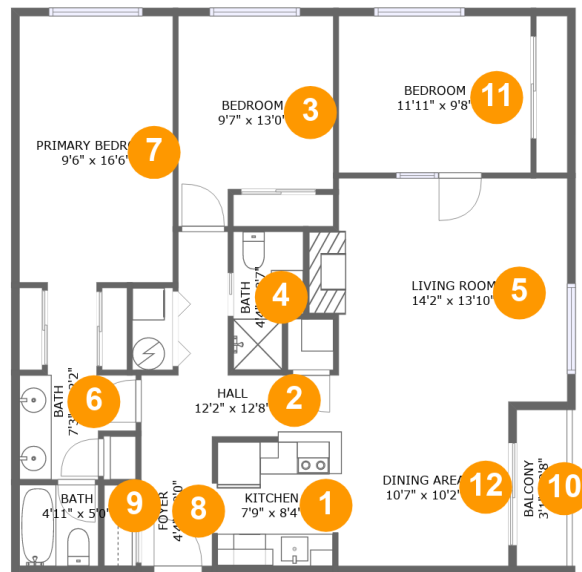
 **0** Half baths

 **1** Floors

 **1,190** Gross living area sqft

 **1,220** Total sqft

6600 Southeast Division Street, South Tabor, Portland, Multnomah County, Oregon, United States,



Room dimensions

Floor 1

Total sqft: 1220 Living area: 1190

#		Dimensions	sqft	Counted as living area
1	Kitchen	7'9" x 8'4"	60 sq. ft	Yes
2	Hall	12'2" x 12'8"	73 sq. ft	Yes
3	Bedroom	9'7" x 13'0"	110 sq. ft	Yes
4	Bath	4'4" x 8'7"	33 sq. ft	Yes
5	Living Room	14'2" x 13'10"	206 sq. ft	Yes
6	Bath	7'3" x 12'2"	57 sq. ft	Yes
7	Bedroom	9'6" x 16'6"	157 sq. ft	Yes
8	Entry	4'4" x 8'0"	35 sq. ft	Yes
9	Bath	4'11" x 5'0"	25 sq. ft	Yes
10	Outdoor	3'1" x 9'8"	30 sq. ft	No
11	Bedroom	11'11" x 9'8"	116 sq. ft	Yes

Scan captured on Thu, 21 Nov 2024 01:34:48 GMT

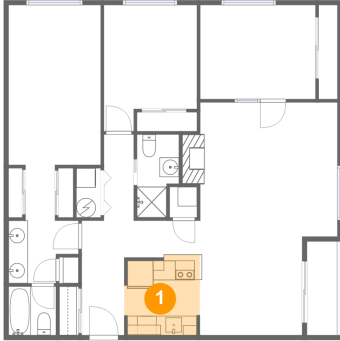
Information is calculated by Cubicasa technology deemed highly reliable but not guaranteed.

**6600 Southeast Division Street, South Tabor,
Portland, Multnomah County, Oregon, United States,**

#		Dimensions	sqft	Counted as living area
12	Dining Room	10'7" x 10'2"	107 sq. ft	Yes

6600 Southeast Division Street, South Tabor, Portland, Multnomah County, Oregon, United States,

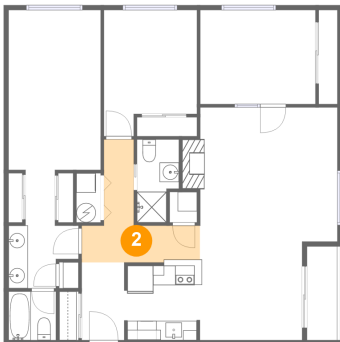
1 Floor 1 - Kitchen



Dimensions: 7'9" x 8'4"
Area: 60 sq. ft
Counted as living area: Yes

Heated: Yes
Finished: Yes
Enclosed: Yes
Contiguous: Yes
Permitted: Yes
Wet space: No
Addition: No
Conversion: No

2 Floor 1 - Hall

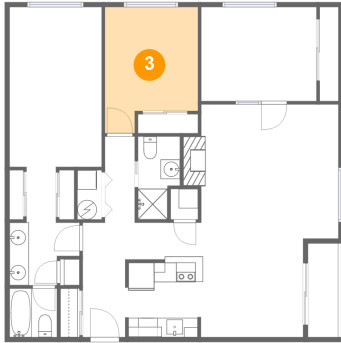


Dimensions: 12'2" x 12'8"
Area: 73 sq. ft
Counted as living area: Yes

Heated: Yes
Finished: Yes
Enclosed: Yes
Contiguous: Yes
Permitted: Yes
Wet space: No
Addition: No
Conversion: No

**6600 Southeast Division Street, South Tabor,
Portland, Multnomah County, Oregon, United States,**

3 Floor 1 - Bedroom



Dimensions: 9'7" x 13'0"
Area: 110 sq. ft
Counted as living area: Yes

Heated: Yes
Finished: Yes
Enclosed: Yes
Contiguous: Yes
Permitted: Yes
Wet space: No
Addition: No
Conversion: No

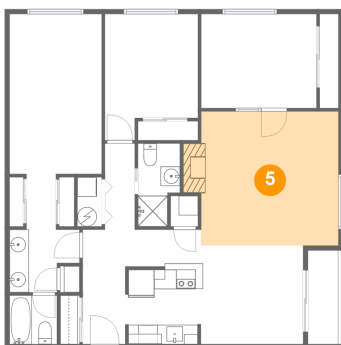
4 Floor 1 - Bath



Dimensions: 4'4" x 8'7"
Area: 33 sq. ft
Counted as living area: Yes

Heated: Yes
Finished: Yes
Enclosed: Yes
Contiguous: Yes
Permitted: Yes
Wet space: Yes
Addition: No
Conversion: No

5 Floor 1 - Living Room

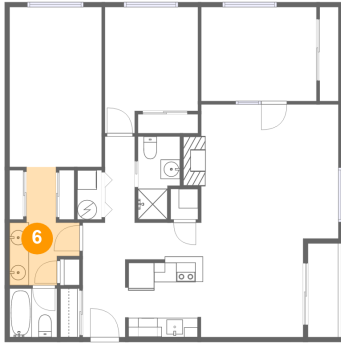


Dimensions: 14'2" x 13'10"
Area: 206 sq. ft
Counted as living area: Yes

Heated: Yes
Finished: Yes
Enclosed: Yes
Contiguous: Yes
Permitted: Yes
Wet space: No
Addition: No
Conversion: No

6600 Southeast Division Street, South Tabor, Portland, Multnomah County, Oregon, United States,

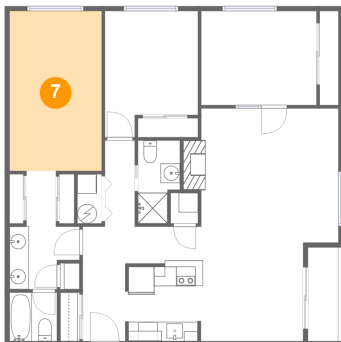
6 Floor 1 - Bath



Dimensions: 7'3" x 12'2"
Area: 57 sq. ft
Counted as living area: Yes

Heated: Yes
Finished: Yes
Enclosed: Yes
Contiguous: Yes
Permitted: Yes
Wet space: Yes
Addition: No
Conversion: No

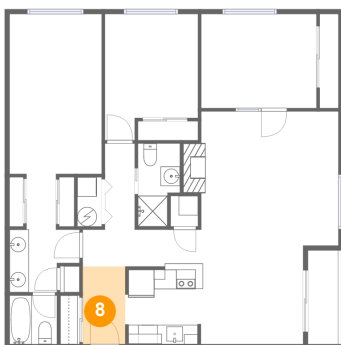
7 Floor 1 - Bedroom



Dimensions: 9'6" x 16'6"
Area: 157 sq. ft
Counted as living area: Yes

Heated: Yes
Finished: Yes
Enclosed: Yes
Contiguous: Yes
Permitted: Yes
Wet space: No
Addition: No
Conversion: No

8 Floor 1 - Entry



Dimensions: 4'4" x 8'0"
Area: 35 sq. ft
Counted as living area: Yes

Heated: Yes
Finished: Yes
Enclosed: Yes
Contiguous: Yes
Permitted: Yes
Wet space: No
Addition: No
Conversion: No

**6600 Southeast Division Street, South Tabor,
Portland, Multnomah County, Oregon, United States,**

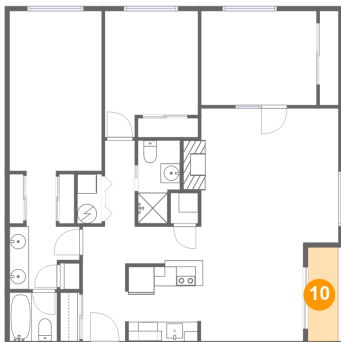
9 Floor 1 - Bath



Dimensions: 4'11" x 5'0"
Area: 25 sq. ft
Counted as living area: Yes

Heated: Yes
Finished: Yes
Enclosed: Yes
Contiguous: Yes
Permitted: Yes
Wet space: Yes
Addition: No
Conversion: No

10 Floor 1 - Outdoor



Dimensions: 3'1" x 9'8"
Area: 30 sq. ft
Counted as living area: No

Heated: No
Finished: Yes
Enclosed: No
Contiguous: Yes
Permitted: Yes
Wet space: No
Addition: No
Conversion: No

11 Floor 1 - Bedroom



Dimensions: 11'11" x 9'8"
Area: 116 sq. ft
Counted as living area: Yes

Heated: Yes
Finished: Yes
Enclosed: Yes
Contiguous: Yes
Permitted: Yes
Wet space: No
Addition: No
Conversion: No

**6600 Southeast Division Street, South Tabor,
Portland, Multnomah County, Oregon, United States,**

12 Floor 1 - Dining Room



Dimensions: 10'7" x 10'2"
Area: 107 sq. ft
Counted as living area: Yes

Heated: Yes
Finished: Yes
Enclosed: Yes
Contiguous: Yes
Permitted: Yes
Wet space: No
Addition: No
Conversion: No