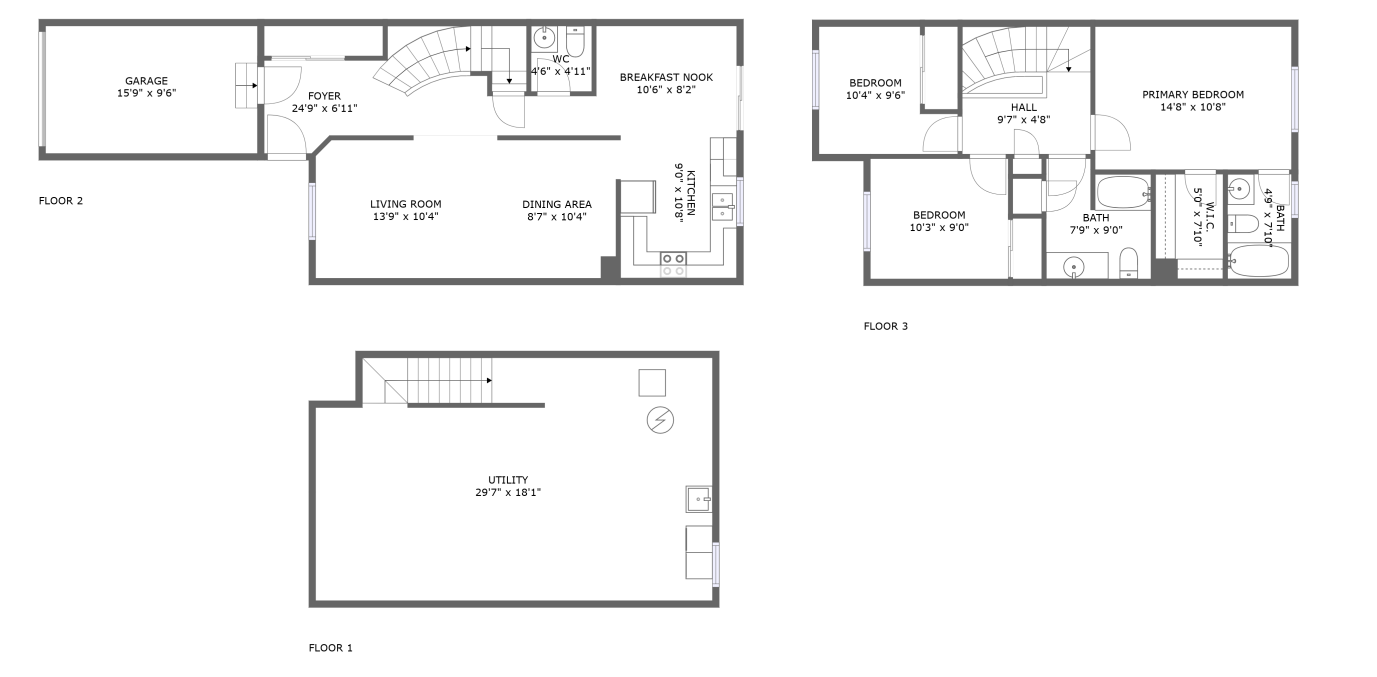
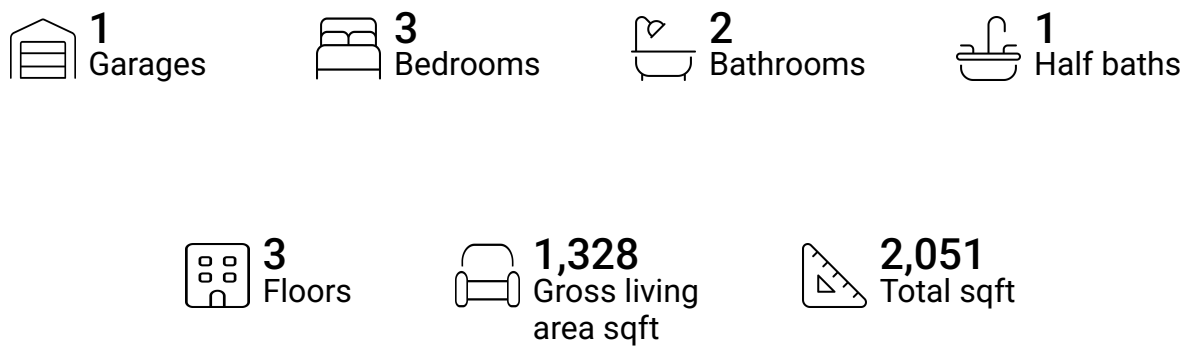


Home report

51 Newport Crescent, Greenboro East, Ottawa, Ontario, Canada,  
K1T 3M2

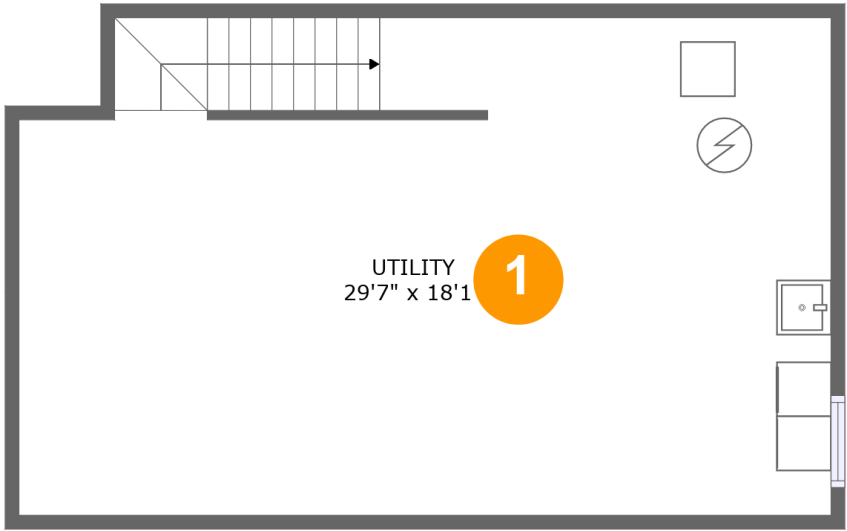


Property summary



Home report

51 Newport Crescent, Greenboro East, Ottawa, Ontario, Canada,  
K1T 3M2



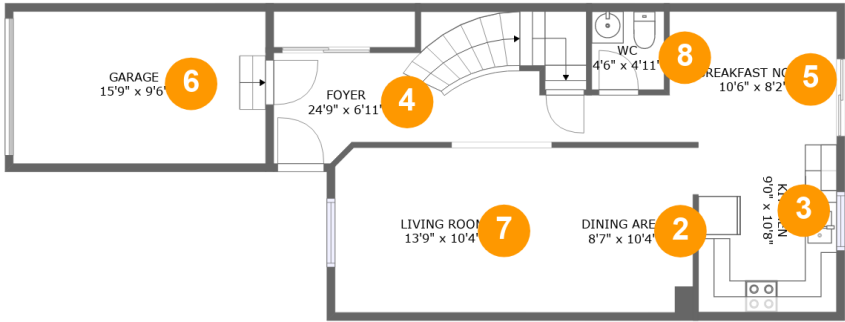
Room dimensions

Floor 1 Total sqft: 556    Living area: 0

#		Max Dimensions	sqft	Included
1	Utility	29'7" x 18'1"	522 sq. ft	No

Home report

51 Newport Crescent, Greenboro East, Ottawa, Ontario, Canada,  
K1T 3M2



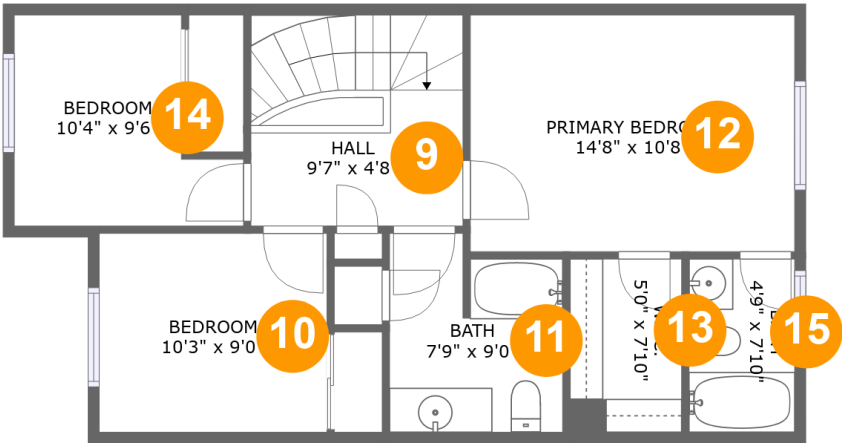
Room dimensions

Floor 2 Total sqft: 831    Living area: 664

#		Max Dimensions	sqft	Included
2	Dining Area	8'7" x 10'4"	88 sq. ft	Yes
3	Kitchen	9'0" x 10'8"	93 sq. ft	Yes
4	Foyer	24'9" x 6'11"	155 sq. ft	Yes
5	Breakfast Nook	10'6" x 8'2"	85 sq. ft	Yes
6	Garage	15'9" x 9'6"	150 sq. ft	No
7	Living Room	13'9" x 10'4"	141 sq. ft	Yes
8	WC	4'6" x 4'11"	22 sq. ft	Yes

Home report

51 Newport Crescent, Greenboro East, Ottawa, Ontario, Canada,  
K1T 3M2



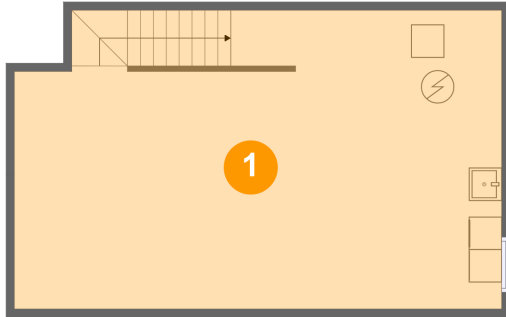
Room dimensions

Floor 3 Total sqft: 664    Living area: 664

#		Max Dimensions	sqft	Included
9	Hall	9'7" x 4'8"	91 sq. ft	Yes
10	Bedroom	10'3" x 9'0"	92 sq. ft	Yes
11	Bath	7'9" x 9'0"	64 sq. ft	Yes
12	Primary Bedroom	14'8" x 10'8"	156 sq. ft	Yes
13	W.I.C.	5'0" x 7'10"	39 sq. ft	Yes
14	Bedroom	10'4" x 9'6"	80 sq. ft	Yes
15	Bath	4'9" x 7'10"	37 sq. ft	Yes

51 Newport Crescent, Greenboro East, Ottawa, Ontario, Canada,  
K1T 3M2

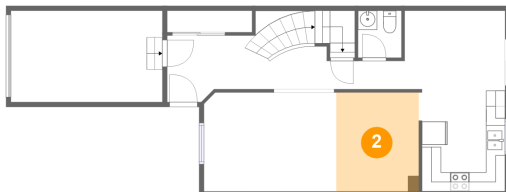
## 1 Floor 1 - Utility



Max Dimensions: 29'7" x  
18'1"  
Calculated Area: 522 sq. ft  
Included: No

Heated: Yes  
Finished: No  
Enclosed: Yes  
Contiguous:  
Yes  
Permitted: Yes  
Wet space: No  
Addition: No  
Conversion: No

## 2 Floor 2 - Dining Area

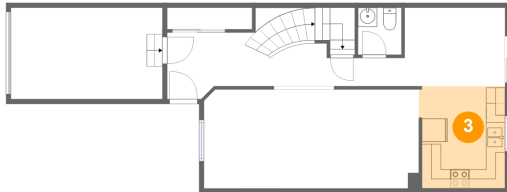


Max Dimensions: 8'7" x  
10'4"  
Calculated Area: 88 sq. ft  
Included: Yes

Heated: Yes  
Finished: Yes  
Enclosed: Yes  
Contiguous:  
Yes  
Permitted: Yes  
Wet space: No  
Addition: No  
Conversion: No

51 Newport Crescent, Greenboro East, Ottawa, Ontario, Canada,  
K1T 3M2

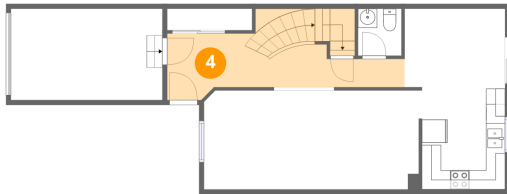
### 3 Floor 2 - Kitchen



Max Dimensions: 9'0" x 10'8"  
Calculated Area: 93 sq. ft  
Included: Yes

Heated: Yes  
Finished: Yes  
Enclosed: Yes  
Contiguous: Yes  
Permitted: Yes  
Wet space: No  
Addition: No  
Conversion: No

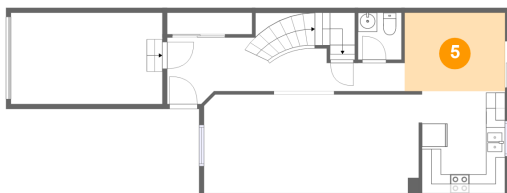
### 4 Floor 2 - Foyer



Max Dimensions: 24'9" x 6'11"  
Calculated Area: 155 sq. ft  
Included: Yes

Heated: Yes  
Finished: Yes  
Enclosed: Yes  
Contiguous: Yes  
Permitted: Yes  
Wet space: No  
Addition: No  
Conversion: No

### 5 Floor 2 - Breakfast Nook

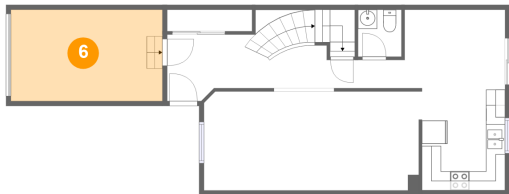


Max Dimensions: 10'6" x 8'2"  
Calculated Area: 85 sq. ft  
Included: Yes

Heated: Yes  
Finished: Yes  
Enclosed: Yes  
Contiguous: Yes  
Permitted: Yes  
Wet space: No  
Addition: No  
Conversion: No

51 Newport Crescent, Greenboro East, Ottawa, Ontario, Canada,  
K1T 3M2

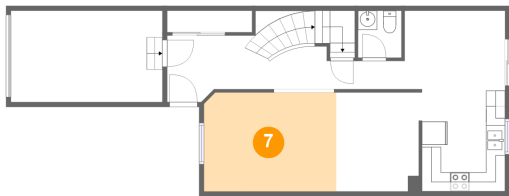
6 Floor 2 - Garage



Max Dimensions: 15'9" x 9'6"  
Calculated Area: 150 sq. ft  
Included: No

Heated: No  
Finished: No  
Enclosed: Yes  
Contiguous: Yes  
Permitted: Yes  
Wet space: No  
Addition: No  
Conversion: No

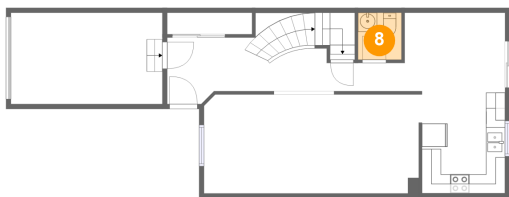
7 Floor 2 - Living Room



Max Dimensions: 13'9" x 10'4"  
Calculated Area: 141 sq. ft  
Included: Yes

Heated: Yes  
Finished: Yes  
Enclosed: Yes  
Contiguous: Yes  
Permitted: Yes  
Wet space: No  
Addition: No  
Conversion: No

8 Floor 2 - WC



Max Dimensions: 4'6" x 4'11"  
Calculated Area: 22 sq. ft  
Included: Yes

Heated: Yes  
Finished: Yes  
Enclosed: Yes  
Contiguous: Yes  
Permitted: Yes  
Wet space: Yes  
Addition: No  
Conversion: No

51 Newport Crescent, Greenboro East, Ottawa, Ontario, Canada,  
K1T 3M2

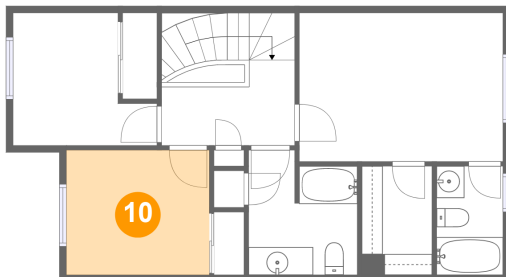
### 9 Floor 3 - Hall



Max Dimensions: 9'7" x 4'8"  
Calculated Area: 91 sq. ft  
Included: Yes

Heated: Yes  
Finished: Yes  
Enclosed: Yes  
Contiguous: Yes  
Permitted: Yes  
Wet space: No  
Addition: No  
Conversion: No

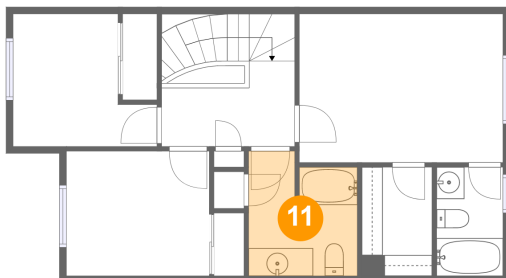
### 10 Floor 3 - Bedroom



Max Dimensions: 10'3" x 9'0"  
Calculated Area: 92 sq. ft  
Included: Yes

Heated: Yes  
Finished: Yes  
Enclosed: Yes  
Contiguous: Yes  
Permitted: Yes  
Wet space: No  
Addition: No  
Conversion: No

### 11 Floor 3 - Bath



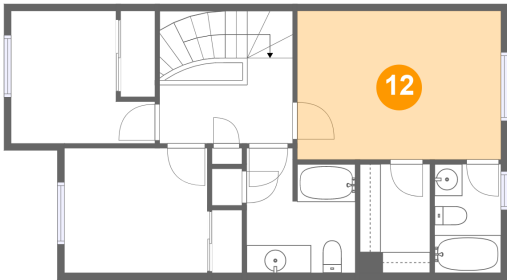
Max Dimensions: 7'9" x 9'0"  
Calculated Area: 64 sq. ft  
Included: Yes

Heated: Yes  
Finished: Yes  
Enclosed: Yes  
Contiguous: Yes  
Permitted: Yes  
Wet space: Yes  
Addition: No  
Conversion: No



51 Newport Crescent, Greenboro East, Ottawa, Ontario, Canada,  
K1T 3M2

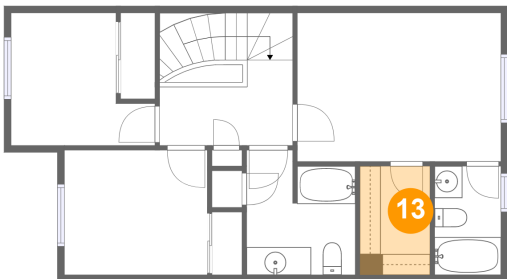
12 Floor 3 - Primary Bedroom



Max Dimensions: 14'8" x 10'8"  
Calculated Area: 156 sq. ft  
Included: Yes

Heated: Yes  
Finished: Yes  
Enclosed: Yes  
Contiguous: Yes  
Permitted: Yes  
Wet space: No  
Addition: No  
Conversion: No

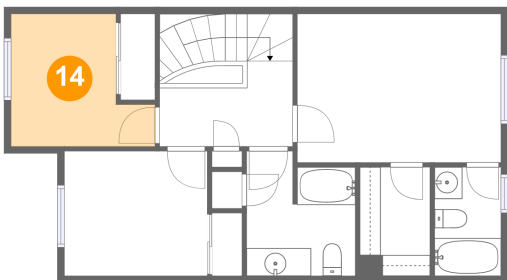
13 Floor 3 - W.I.C.



Max Dimensions: 5'0" x 7'10"  
Calculated Area: 39 sq. ft  
Included: Yes

Heated: Yes  
Finished: Yes  
Enclosed: Yes  
Contiguous: Yes  
Permitted: Yes  
Wet space: No  
Addition: No  
Conversion: No

14 Floor 3 - Bedroom

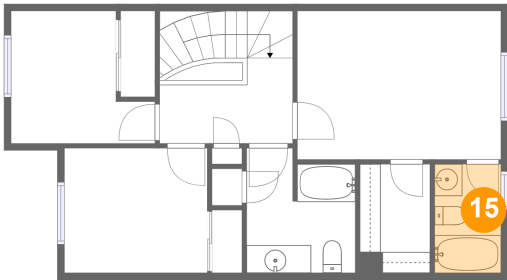


Max Dimensions: 10'4" x 9'6"  
Calculated Area: 80 sq. ft  
Included: Yes

Heated: Yes  
Finished: Yes  
Enclosed: Yes  
Contiguous: Yes  
Permitted: Yes  
Wet space: No  
Addition: No  
Conversion: No

51 Newport Crescent, Greenboro East, Ottawa, Ontario, Canada,  
K1T 3M2

15 Floor 3 - Bath



Max Dimensions: 4'9" x 7'10"  
Calculated Area: 37 sq. ft  
Included: Yes

Heated: Yes  
Finished: Yes  
Enclosed: Yes  
Contiguous: Yes  
Permitted: Yes  
Wet space: Yes  
Addition: No  
Conversion: No