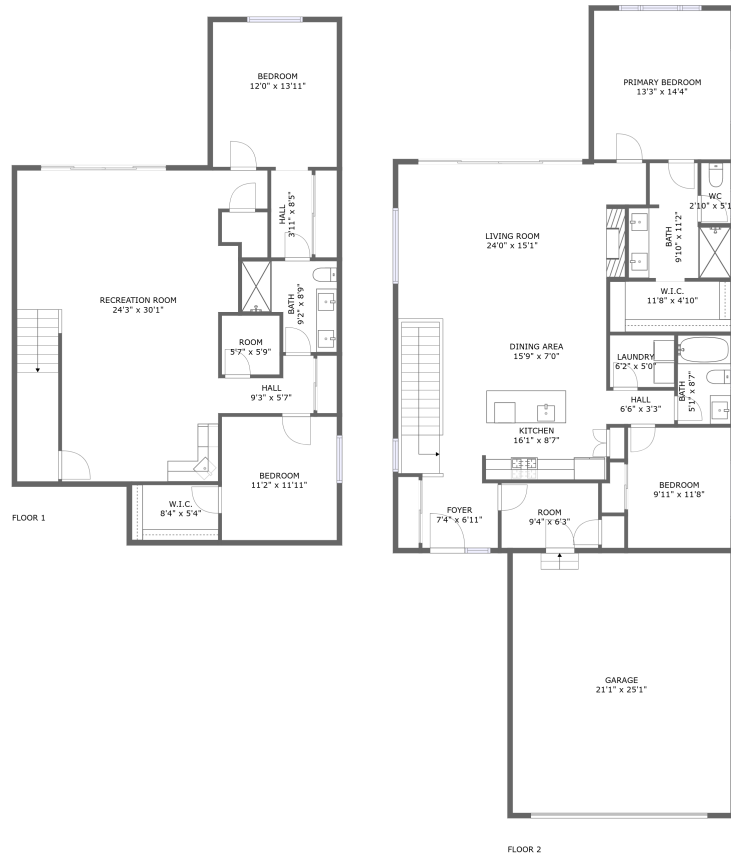






# 4008 Red Feather Trl, Cheyenne, WY, US

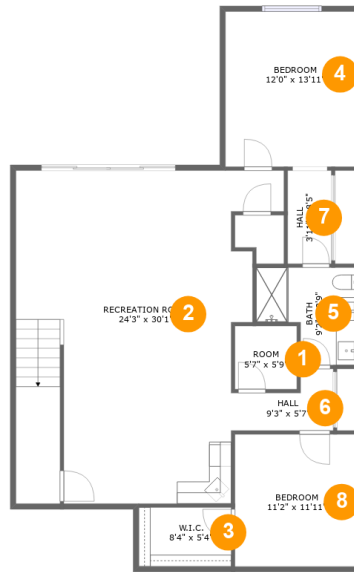


## Property Summary

 **1** garages     **4** bedrooms     **3** bathrooms     **0** half baths

 **2** floors     **2,771** Gross Living Area sqft     **3,337** total sqft

# 4008 Red Feather Trl, Cheyenne, WY, US



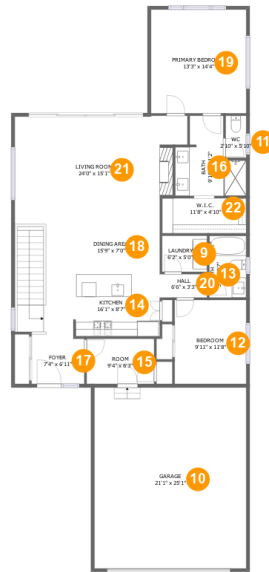
## Room Dimensions

Floor 1

Total sqft: 1297

Living area: 1297

#	Room name	Dimensions	Area (sqft)	Counted as Living Area
1	Room	5'7" x 5'9"	32 sq. ft	Yes
2	Recreation Room	24'3" x 30'1"	610 sq. ft	Yes
3	W.i.c.	8'4" x 5'4"	45 sq. ft	Yes
4	Bedroom	12'0" x 13'11"	168 sq. ft	Yes
5	Bath	9'2" x 8'9"	66 sq. ft	Yes
6	Hall	9'3" x 5'7"	38 sq. ft	Yes
7	Hall	3'11" x 8'5"	33 sq. ft	Yes
8	Bedroom	11'2" x 11'11"	133 sq. ft	Yes

**4008 Red Feather Trl, Cheyenne, WY, US****Room Dimensions****Floor 2****Total sqft: 2040****Living area: 1474**

#	Room name	Dimensions	Area (sqft)	Counted as Living Area
9	Laundry	6'2" x 5'0"	31 sq. ft	Yes
10	Garage	21'1" x 25'1"	529 sq. ft	No
11	Wc	2'10" x 5'10"	17 sq. ft	Yes
12	Bedroom	9'11" x 11'8"	116 sq. ft	Yes
13	Bath	5'1" x 8'7"	44 sq. ft	Yes
14	Kitchen	16'1" x 8'7"	169 sq. ft	Yes
15	Room	9'4" x 6'3"	59 sq. ft	Yes
16	Bath	9'10" x 11'2"	81 sq. ft	Yes
17	Foyer	7'4" x 6'11"	49 sq. ft	Yes
18	Dining Area	15'9" x 7'0"	141 sq. ft	Yes
19	Primary Bedroom	13'3" x 14'4"	190 sq. ft	Yes

Scan captured on Fri, 25 Oct 2024 20:52:14 GMT

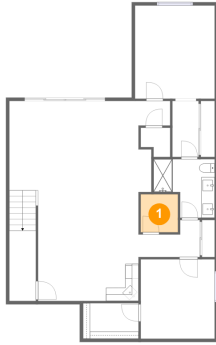
Information is calculated by CubiCasa technology; deemed highly reliable but not guaranteed.

**4008 Red Feather Trl, Cheyenne, WY, US**

#	Room name	Dimensions	Area (sqft)	Counted as Living Area
20	Hall	6'6" x 3'3"	21 sq. ft	Yes
21	Living Room	24'0" x 15'1"	328 sq. ft	Yes
22	W.i.c.	11'8" x 4'10"	57 sq. ft	Yes

# 4008 Red Feather Trl, Cheyenne, WY, US

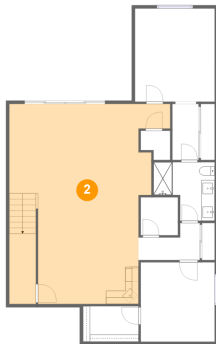
## 1 Floor 1 - Room



**Dimensions:** 5'7" x 5'9"  
**Area:** 32 sq. ft  
**Counted as Living Area:**  
Yes

**Heated:** Yes  
**Finished:** Yes  
**Enclosed:** Yes  
**Contiguous:**  
Yes  
**Permitted:** Yes  
**Wet Space:** No  
**Addition:** No  
**Conversion:** No

## 2 Floor 1 - Recreation Room

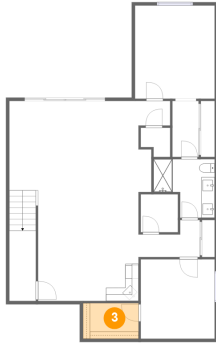


**Dimensions:** 24'3" x 30'1"  
**Area:** 610 sq. ft  
**Counted as Living Area:**  
Yes

**Heated:** Yes  
**Finished:** Yes  
**Enclosed:** Yes  
**Contiguous:**  
Yes  
**Permitted:** Yes  
**Wet Space:** No  
**Addition:** No  
**Conversion:** No

# 4008 Red Feather Trl, Cheyenne, WY, US

## 3 Floor 1 - W.i.c.



Dimensions: 8'4" x 5'4"  
Area: 45 sq. ft  
Counted as Living Area:  
Yes

Heated: Yes  
Finished: Yes  
Enclosed: Yes  
Contiguous:  
Yes  
Permitted: Yes  
Wet Space: No  
Addition: No  
Conversion: No

## 4 Floor 1 - Bedroom



Dimensions: 12'0" x 13'11"  
Area: 168 sq. ft  
Counted as Living Area:  
Yes

Heated: Yes  
Finished: Yes  
Enclosed: Yes  
Contiguous:  
Yes  
Permitted: Yes  
Wet Space: No  
Addition: No  
Conversion: No

## 5 Floor 1 - Bath



Dimensions: 9'2" x 8'9"  
Area: 66 sq. ft  
Counted as Living Area:  
Yes

Heated: Yes  
Finished: Yes  
Enclosed: Yes  
Contiguous:  
Yes  
Permitted: Yes  
Wet Space: Yes  
Addition: No  
Conversion: No

# 4008 Red Feather Trl, Cheyenne, WY, US

## 6 Floor 1 - Hall



Dimensions: 9'3" x 5'7"  
Area: 38 sq. ft  
Counted as Living Area:  
Yes

Heated: Yes  
Finished: Yes  
Enclosed: Yes  
Contiguous:  
Yes  
Permitted: Yes  
Wet Space: No  
Addition: No  
Conversion: No

## 7 Floor 1 - Hall



Dimensions: 3'11" x 8'5"  
Area: 33 sq. ft  
Counted as Living Area:  
Yes

Heated: Yes  
Finished: Yes  
Enclosed: Yes  
Contiguous:  
Yes  
Permitted: Yes  
Wet Space: No  
Addition: No  
Conversion: No

## 8 Floor 1 - Bedroom



Dimensions: 11'2" x 11'11"  
Area: 133 sq. ft  
Counted as Living Area:  
Yes

Heated: Yes  
Finished: Yes  
Enclosed: Yes  
Contiguous:  
Yes  
Permitted: Yes  
Wet Space: No  
Addition: No  
Conversion: No

# 4008 Red Feather Trl, Cheyenne, WY, US

## 9 Floor 2 - Laundry



Dimensions: 6'2" x 5'0"  
Area: 31 sq. ft  
Counted as Living Area:  
Yes

Heated: Yes  
Finished: Yes  
Enclosed: Yes  
Contiguous:  
Yes  
Permitted: Yes  
Wet Space: No  
Addition: No  
Conversion: No

## 10 Floor 2 - Garage



Dimensions: 21'1" x 25'1"  
Area: 529 sq. ft  
Counted as Living Area: No

Heated: No  
Finished: No  
Enclosed: Yes  
Contiguous: Yes  
Permitted: Yes  
Wet Space: No  
Addition: No  
Conversion: No

## 11 Floor 2 - Wc



Dimensions: 2'10" x 5'10"  
Area: 17 sq. ft  
Counted as Living Area:  
Yes

Heated: Yes  
Finished: Yes  
Enclosed: Yes  
Contiguous:  
Yes  
Permitted: Yes  
Wet Space: Yes  
Addition: No  
Conversion: No



# 4008 Red Feather Trl, Cheyenne, WY, US

## 12 Floor 2 - Bedroom



**Dimensions:** 9'11" x 11'8"  
**Area:** 116 sq. ft  
**Counted as Living Area:**  
Yes

**Heated:** Yes  
**Finished:** Yes  
**Enclosed:** Yes  
**Contiguous:**  
Yes  
**Permitted:** Yes  
**Wet Space:** No  
**Addition:** No  
**Conversion:** No

## 13 Floor 2 - Bath



**Dimensions:** 5'1" x 8'7"  
**Area:** 44 sq. ft  
**Counted as Living Area:**  
Yes

**Heated:** Yes  
**Finished:** Yes  
**Enclosed:** Yes  
**Contiguous:**  
Yes  
**Permitted:** Yes  
**Wet Space:** Yes  
**Addition:** No  
**Conversion:** No

## 14 Floor 2 - Kitchen



**Dimensions:** 16'1" x 8'7"  
**Area:** 169 sq. ft  
**Counted as Living Area:**  
Yes

**Heated:** Yes  
**Finished:** Yes  
**Enclosed:** Yes  
**Contiguous:**  
Yes  
**Permitted:** Yes  
**Wet Space:** No  
**Addition:** No  
**Conversion:** No

# 4008 Red Feather Trl, Cheyenne, WY, US

## 15 Floor 2 - Room



Dimensions: 9'4" x 6'3"  
Area: 59 sq. ft  
Counted as Living Area:  
Yes

Heated: Yes  
Finished: Yes  
Enclosed: Yes  
Contiguous:  
Yes  
Permitted: Yes  
Wet Space: No  
Addition: No  
Conversion: No

## 16 Floor 2 - Bath



Dimensions: 9'10" x 11'2"  
Area: 81 sq. ft  
Counted as Living Area:  
Yes

Heated: Yes  
Finished: Yes  
Enclosed: Yes  
Contiguous:  
Yes  
Permitted: Yes  
Wet Space: Yes  
Addition: No  
Conversion: No

## 17 Floor 2 - Foyer



Dimensions: 7'4" x 6'11"  
Area: 49 sq. ft  
Counted as Living Area:  
Yes

Heated: Yes  
Finished: Yes  
Enclosed: Yes  
Contiguous:  
Yes  
Permitted: Yes  
Wet Space: No  
Addition: No  
Conversion: No

# 4008 Red Feather Trl, Cheyenne, WY, US

## 18 Floor 2 - Dining Area



Dimensions: 15'9" x 7'0"  
Area: 141 sq. ft  
Counted as Living Area:  
Yes

Heated: Yes  
Finished: Yes  
Enclosed: Yes  
Contiguous:  
Yes  
Permitted: Yes  
Wet Space: No  
Addition: No  
Conversion: No

## 19 Floor 2 - Primary Bedroom



Dimensions: 13'3" x 14'4"  
Area: 190 sq. ft  
Counted as Living Area:  
Yes

Heated: Yes  
Finished: Yes  
Enclosed: Yes  
Contiguous:  
Yes  
Permitted: Yes  
Wet Space: No  
Addition: No  
Conversion: No

## 20 Floor 2 - Hall



Dimensions: 6'6" x 3'3"  
Area: 21 sq. ft  
Counted as Living Area:  
Yes

Heated: Yes  
Finished: Yes  
Enclosed: Yes  
Contiguous:  
Yes  
Permitted: Yes  
Wet Space: No  
Addition: No  
Conversion: No

# 4008 Red Feather Trl, Cheyenne, WY, US

## 21 Floor 2 - Living Room



**Dimensions:** 24'0" x 15'1"  
**Area:** 328 sq. ft  
**Counted as Living Area:**  
Yes

**Heated:** Yes  
**Finished:** Yes  
**Enclosed:** Yes  
**Contiguous:**  
Yes  
**Permitted:** Yes  
**Wet Space:** No  
**Addition:** No  
**Conversion:** No

## 22 Floor 2 - W.i.c.



**Dimensions:** 11'8" x 4'10"  
**Area:** 57 sq. ft  
**Counted as Living Area:**  
Yes

**Heated:** Yes  
**Finished:** Yes  
**Enclosed:** Yes  
**Contiguous:**  
Yes  
**Permitted:** Yes  
**Wet Space:** No  
**Addition:** No  
**Conversion:** No