



Home report


602 Allison Avenue Southwest, Old Southwest, Roanoke,
Roanoke city, Virginia, United States, 24016





Property summary


 **0** Garages


 **1** Bedrooms

 **1** Bathrooms

 **0** Half baths

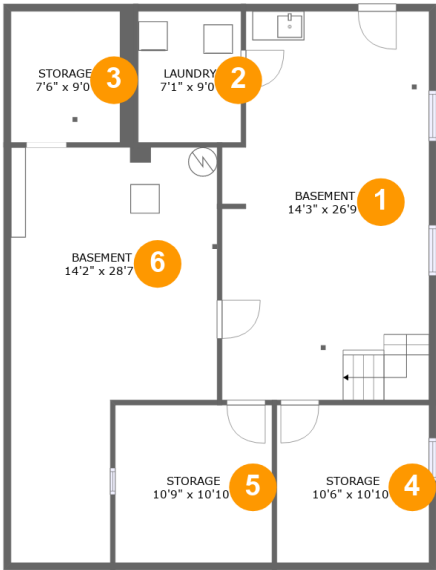
 **2** Floors

 **1,136** Gross living area sqft

 **3,233** Total sqft

Home report

602 Allison Avenue Southwest, Old Southwest, Roanoke,
Roanoke city, Virginia, United States, 24016



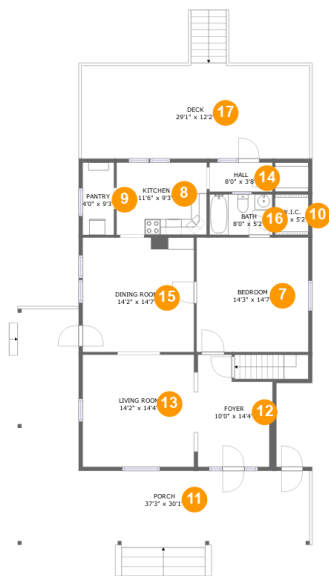
Room dimensions

Floor 1 Total sqft: 1161 Living area: 0

#		Max Dimensions	sqft	Included
1	Basement	14'3" x 26'9"	365 sq. ft	No
2	Laundry	7'1" x 9'0"	64 sq. ft	No
3	Storage	7'6" x 9'0"	76 sq. ft	No
4	Storage	10'6" x 10'10"	114 sq. ft	No
5	Storage	10'9" x 10'10"	117 sq. ft	No
6	Basement	14'2" x 28'7"	323 sq. ft	No

Home report

602 Allison Avenue Southwest, Old Southwest, Roanoke,
Roanoke city, Virginia, United States, 24016



Room dimensions

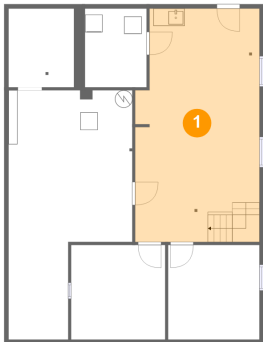
Floor 2

Total sqft: 2072 Living area: 1136

#		Max Dimensions	sqft	Included
7	Bedroom	14'3" x 14'7"	208 sq. ft	Yes
8	Kitchen	11'6" x 9'3"	106 sq. ft	Yes
9	Pantry	4'0" x 9'3"	37 sq. ft	Yes
10	W.I.C.	4'3" x 5'2"	22 sq. ft	Yes
11	Porch	37'3" x 30'1"	559 sq. ft	No
12	Foyer	10'0" x 14'4"	123 sq. ft	Yes
13	Living Room	14'2" x 14'4"	203 sq. ft	Yes
14	Hall	8'0" x 3'8"	30 sq. ft	Yes
15	Dining Room	14'2" x 14'7"	207 sq. ft	Yes
16	Bath	8'0" x 5'2"	42 sq. ft	Yes
17	Deck	29'1" x 12'2"	377 sq. ft	No

602 Allison Avenue Southwest, Old Southwest, Roanoke,
Roanoke city, Virginia, United States, 24016

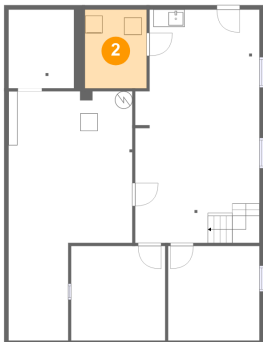
1 Floor 1 - Basement



Max Dimensions: 14'3" x 26'9"
Calculated Area: 365 sq. ft
Included: No

Heated: Yes
Finished: No
Enclosed: Yes
Contiguous: Yes
Permitted: Yes
Wet space: No
Addition: No
Conversion: No

2 Floor 1 - Laundry

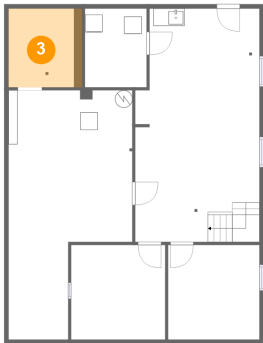


Max Dimensions: 7'1" x 9'0"
Calculated Area: 64 sq. ft
Included: No

Heated: Yes
Finished: No
Enclosed: Yes
Contiguous: Yes
Permitted: Yes
Wet space: No
Addition: No
Conversion: No

602 Allison Avenue Southwest, Old Southwest, Roanoke,
Roanoke city, Virginia, United States, 24016

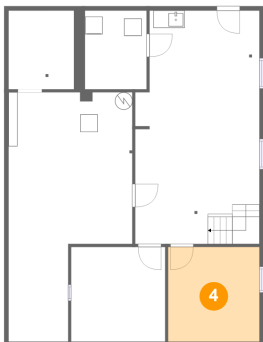
3 Floor 1 - Storage



Max Dimensions: 7'6" x 9'0"
Calculated Area: 76 sq. ft
Included: No

Heated: No
Finished: No
Enclosed: No
Contiguous: No
Permitted: Yes
Wet space: No
Addition: No
Conversion: No

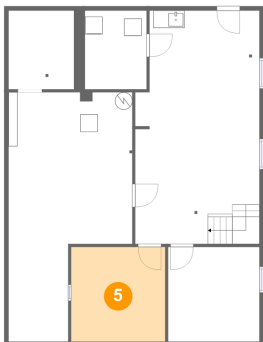
4 Floor 1 - Storage



Max Dimensions: 10'6" x 10'10"
Calculated Area: 114 sq. ft
Included: No

Heated: No
Finished: No
Enclosed: No
Contiguous: No
Permitted: Yes
Wet space: No
Addition: No
Conversion: No

5 Floor 1 - Storage

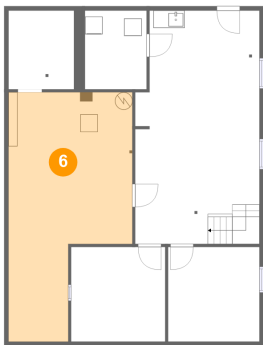


Max Dimensions: 10'9" x 10'10"
Calculated Area: 117 sq. ft
Included: No

Heated: No
Finished: No
Enclosed: No
Contiguous: No
Permitted: Yes
Wet space: No
Addition: No
Conversion: No

602 Allison Avenue Southwest, Old Southwest, Roanoke,
Roanoke city, Virginia, United States, 24016

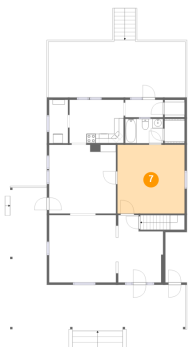
6 Floor 1 - Basement



Max Dimensions: 14'2" x 28'7"
Calculated Area: 323 sq. ft
Included: No

Heated: Yes
Finished: No
Enclosed: Yes
Contiguous: Yes
Permitted: Yes
Wet space: No
Addition: No
Conversion: No

7 Floor 2 - Bedroom



Max Dimensions: 14'3" x 14'7"
Calculated Area: 208 sq. ft
Included: Yes

Heated: Yes
Finished: Yes
Enclosed: Yes
Contiguous: Yes
Permitted: Yes
Wet space: No
Addition: No
Conversion: No

8 Floor 2 - Kitchen



Max Dimensions: 11'6" x 9'3"
Calculated Area: 106 sq. ft
Included: Yes

Heated: Yes
Finished: Yes
Enclosed: Yes
Contiguous: Yes
Permitted: Yes
Wet space: No
Addition: No
Conversion: No

9 Floor 2 - Pantry



Max Dimensions: 4'0" x 9'3"
Calculated Area: 37 sq. ft
Included: Yes

Heated: Yes
Finished: Yes
Enclosed: Yes
Contiguous: Yes
Permitted: Yes
Wet space: No
Addition: No
Conversion: No

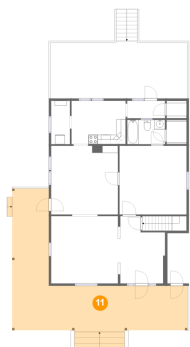
10 Floor 2 - W.I.C.



Max Dimensions: 4'3" x 5'2"
Calculated Area: 22 sq. ft
Included: Yes

Heated: Yes
Finished: Yes
Enclosed: Yes
Contiguous: Yes
Permitted: Yes
Wet space: No
Addition: No
Conversion: No

11 Floor 2 - Porch



Max Dimensions: 37'3" x 30'1"
Calculated Area: 559 sq. ft
Included: No

Heated: No
Finished: Yes
Enclosed: No
Contiguous: Yes
Permitted: Yes
Wet space: No
Addition: No
Conversion: No

602 Allison Avenue Southwest, Old Southwest, Roanoke,
Roanoke city, Virginia, United States, 24016

12 Floor 2 - Foyer



Max Dimensions: 10'0" x 14'4"
Calculated Area: 123 sq. ft
Included: Yes

Heated: Yes
Finished: Yes
Enclosed: Yes
Contiguous: Yes
Permitted: Yes
Wet space: No
Addition: No
Conversion: No

13 Floor 2 - Living Room



Max Dimensions: 14'2" x 14'4"
Calculated Area: 203 sq. ft
Included: Yes

Heated: Yes
Finished: Yes
Enclosed: Yes
Contiguous: Yes
Permitted: Yes
Wet space: No
Addition: No
Conversion: No

14 Floor 2 - Hall



Max Dimensions: 8'0" x 3'8"
Calculated Area: 30 sq. ft
Included: Yes

Heated: Yes
Finished: Yes
Enclosed: Yes
Contiguous: Yes
Permitted: Yes
Wet space: No
Addition: No
Conversion: No

602 Allison Avenue Southwest, Old Southwest, Roanoke,
Roanoke city, Virginia, United States, 24016

15 Floor 2 - Dining Room



Max Dimensions: 14'2" x 14'7"
Calculated Area: 207 sq. ft
Included: Yes

Heated: Yes
Finished: Yes
Enclosed: Yes
Contiguous: Yes
Permitted: Yes
Wet space: No
Addition: No
Conversion: No

16 Floor 2 - Bath



Max Dimensions: 8'0" x 5'2"
Calculated Area: 42 sq. ft
Included: Yes

Heated: Yes
Finished: Yes
Enclosed: Yes
Contiguous: Yes
Permitted: Yes
Wet space: Yes
Addition: No
Conversion: No

17 Floor 2 - Deck



Max Dimensions: 29'1" x 12'2"
Calculated Area: 377 sq. ft
Included: No

Heated: No
Finished: Yes
Enclosed: No
Contiguous: Yes
Permitted: Yes
Wet space: No
Addition: No
Conversion: No