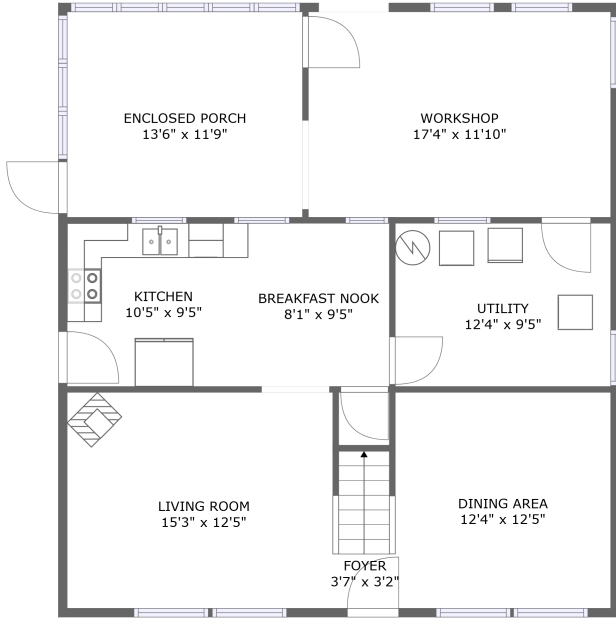
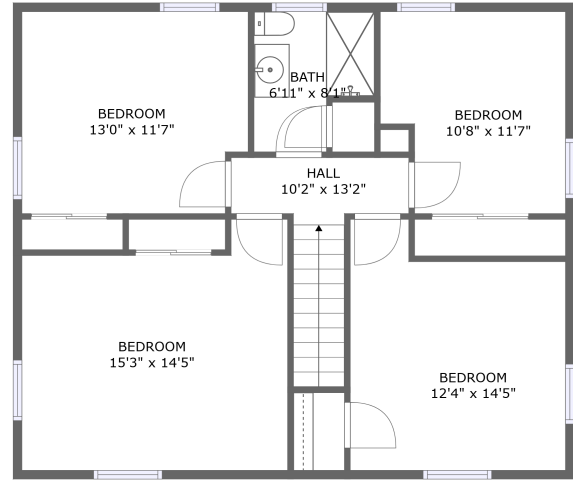


1535 Gordon Avenue Southeast, Riverdale, Roanoke, Roanoke, Virginia, United States, 24014




FLOOR 1



FLOOR 2

Property summary


 **0** Garages

 **4** Bedrooms

 **1** Bathrooms

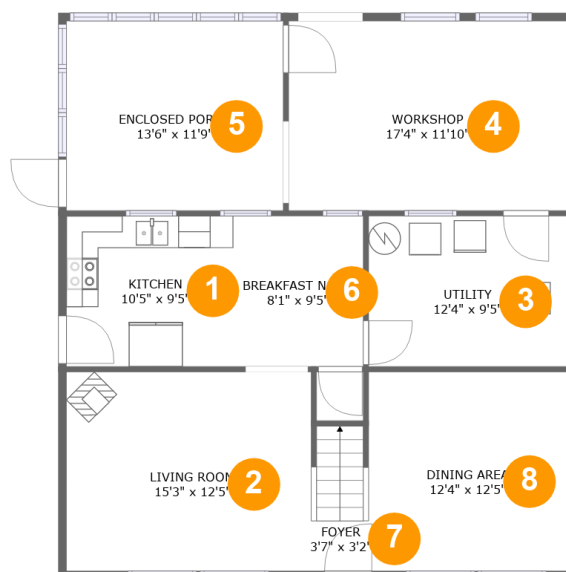
 **0** Half baths

 **2** Floors

 **1,412** Gross living area sqft

 **2,016** Total sqft

1535 Gordon Avenue Southeast, Riverdale, Roanoke, Roanoke, Virginia, United States, 24014



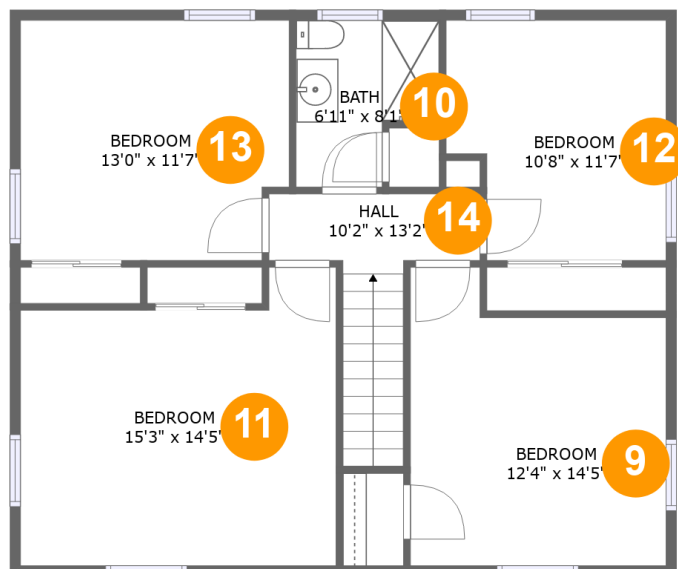
Room dimensions

Floor 1

Total sqft: 1136 Living area: 532

#		Dimensions	sqft	Counted as living area
1	Kitchen	10'5" x 9'5"	97 sq. ft	Yes
2	Living Room	15'3" x 12'5"	189 sq. ft	Yes
3	Utility	12'4" x 9'5"	116 sq. ft	No
4	Recreation Room	17'4" x 11'10"	205 sq. ft	No
5	Enclosed Porch	13'6" x 11'9"	160 sq. ft	No
6	Nook	8'1" x 9'5"	76 sq. ft	No
7	Entry	3'7" x 3'2"	31 sq. ft	Yes
8	Dining Room	12'4" x 12'5"	153 sq. ft	Yes

**1535 Gordon Avenue Southeast, Riverdale, Roanoke,
Roanoke, Virginia, United States, 24014**



Room dimensions

Floor 2

Total sqft: 880 Living area: 880

#		Dimensions	sqft	Counted as living area
9	Bedroom	12'4" x 14'5"	156 sq. ft	Yes
10	Bath	6'11" x 8'1"	47 sq. ft	Yes
11	Bedroom	15'3" x 14'5"	195 sq. ft	Yes
12	Bedroom	10'8" x 11'7"	113 sq. ft	Yes
13	Bedroom	13'0" x 11'7"	146 sq. ft	Yes
14	Hall	10'2" x 13'2"	62 sq. ft	Yes

1535 Gordon Avenue Southeast, Riverdale, Roanoke, Roanoke, Virginia, United States, 24014

1 Floor 1 - Kitchen



Dimensions: 10'5" x 9'5"
Area: 97 sq. ft
Counted as living area: Yes

Heated: Yes
Finished: Yes
Enclosed: Yes
Contiguous: Yes
Permitted: Yes
Wet space: No
Addition: No
Conversion: No

2 Floor 1 - Living Room



Dimensions: 15'3" x 12'5"
Area: 189 sq. ft
Counted as living area: Yes

Heated: Yes
Finished: Yes
Enclosed: Yes
Contiguous: Yes
Permitted: Yes
Wet space: No
Addition: No
Conversion: No

1535 Gordon Avenue Southeast, Riverdale, Roanoke,
Roanoke, Virginia, United States, 24014

3 Floor 1 - Utility



Dimensions: 12'4" x 9'5"
Area: 116 sq. ft
Counted as living area: No

Heated: Yes
Finished: Yes
Enclosed: Yes
Contiguous: Yes
Permitted: Yes
Wet space: No
Addition: No
Conversion: No

4 Floor 1 - Recreation Room



Dimensions: 17'4" x 11'10"
Area: 205 sq. ft
Counted as living area: No

Heated: No
Finished: No
Enclosed: Yes
Contiguous: No
Permitted: Yes
Wet space: No
Addition: No
Conversion: No

5 Floor 1 - Enclosed Porch



Dimensions: 13'6" x 11'9"
Area: 160 sq. ft
Counted as living area: No

Heated: No
Finished: Yes
Enclosed: No
Contiguous: Yes
Permitted: Yes
Wet space: No
Addition: No
Conversion: No

**1535 Gordon Avenue Southeast, Riverdale, Roanoke,
Roanoke, Virginia, United States, 24014**

6 Floor 1 - Nook



Dimensions: 8'1" x 9'5"
Area: 76 sq. ft
Counted as living area: No

Heated: Yes
Finished: Yes
Enclosed: Yes
Contiguous: Yes
Permitted: Yes
Wet space: No
Addition: No
Conversion: No

7 Floor 1 - Entry



Dimensions: 3'7" x 3'2"
Area: 31 sq. ft
Counted as living area: Yes

Heated: Yes
Finished: Yes
Enclosed: Yes
Contiguous: Yes
Permitted: Yes
Wet space: No
Addition: No
Conversion: No

8 Floor 1 - Dining Room

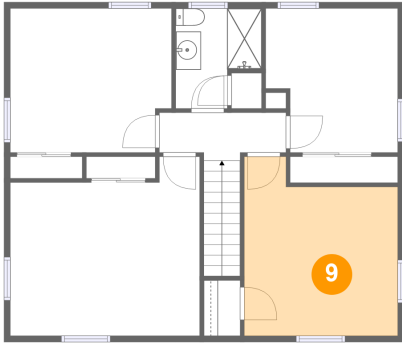


Dimensions: 12'4" x 12'5"
Area: 153 sq. ft
Counted as living area: Yes

Heated: Yes
Finished: Yes
Enclosed: Yes
Contiguous: Yes
Permitted: Yes
Wet space: No
Addition: No
Conversion: No

1535 Gordon Avenue Southeast, Riverdale, Roanoke,
Roanoke, Virginia, United States, 24014

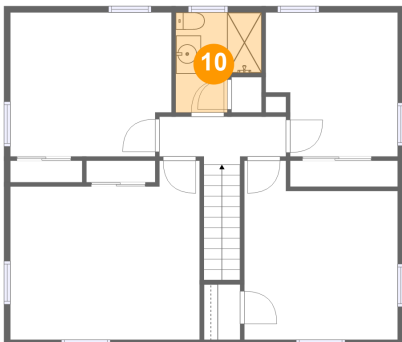
9 Floor 2 - Bedroom



Dimensions: 12'4" x 14'5"
Area: 156 sq. ft
Counted as living area: Yes

Heated: Yes
Finished: Yes
Enclosed: Yes
Contiguous: Yes
Permitted: Yes
Wet space: No
Addition: No
Conversion: No

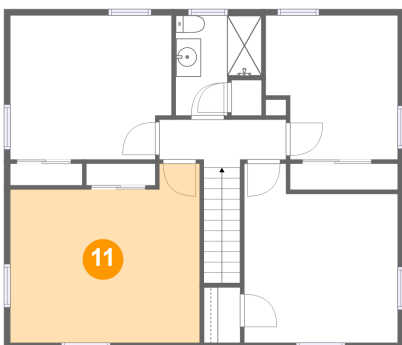
10 Floor 2 - Bath



Dimensions: 6'11" x 8'1"
Area: 47 sq. ft
Counted as living area: Yes

Heated: Yes
Finished: Yes
Enclosed: Yes
Contiguous: Yes
Permitted: Yes
Wet space: Yes
Addition: No
Conversion: No

11 Floor 2 - Bedroom

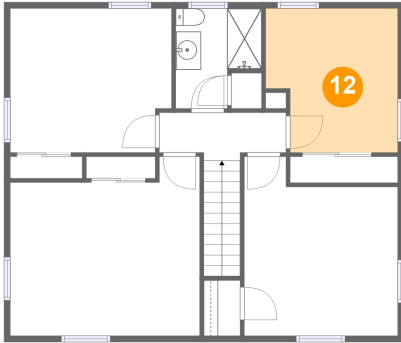


Dimensions: 15'3" x 14'5"
Area: 195 sq. ft
Counted as living area: Yes

Heated: Yes
Finished: Yes
Enclosed: Yes
Contiguous: Yes
Permitted: Yes
Wet space: No
Addition: No
Conversion: No

1535 Gordon Avenue Southeast, Riverdale, Roanoke,
Roanoke, Virginia, United States, 24014

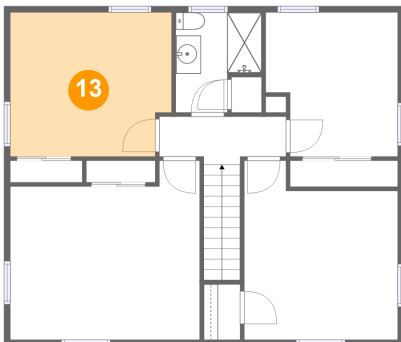
12 Floor 2 - Bedroom



Dimensions: 10'8" x 11'7"
Area: 113 sq. ft
Counted as living area: Yes

Heated: Yes
Finished: Yes
Enclosed: Yes
Contiguous: Yes
Permitted: Yes
Wet space: No
Addition: No
Conversion: No

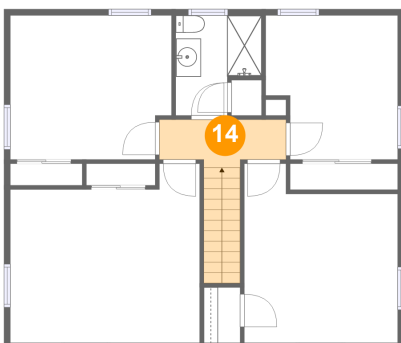
13 Floor 2 - Bedroom



Dimensions: 13'0" x 11'7"
Area: 146 sq. ft
Counted as living area: Yes

Heated: Yes
Finished: Yes
Enclosed: Yes
Contiguous: Yes
Permitted: Yes
Wet space: No
Addition: No
Conversion: No

14 Floor 2 - Hall



Dimensions: 10'2" x 13'2"
Area: 62 sq. ft
Counted as living area: Yes

Heated: Yes
Finished: Yes
Enclosed: Yes
Contiguous: Yes
Permitted: Yes
Wet space: No
Addition: No
Conversion: No