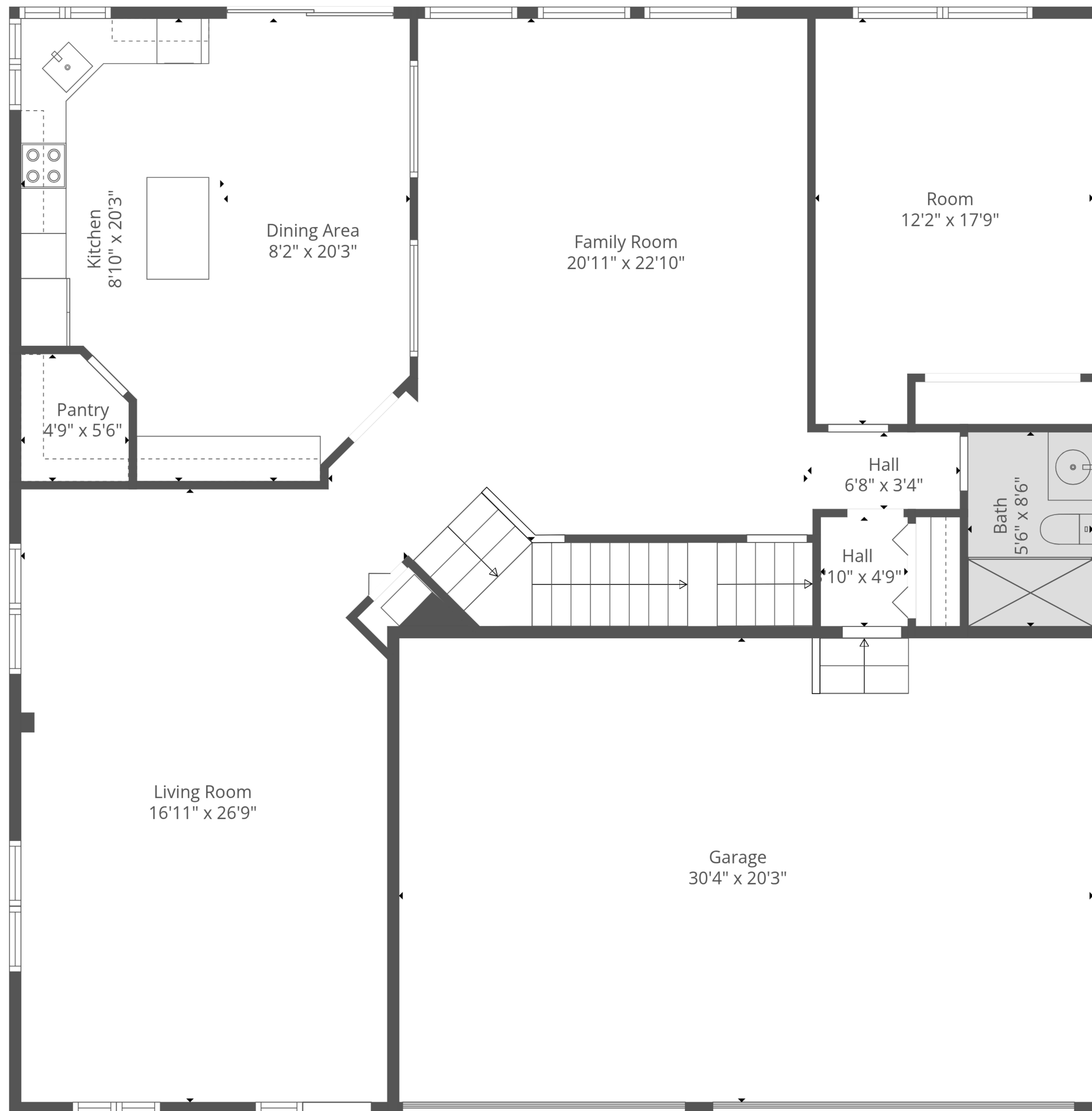


Basement
46'9" x 26'7"

TOTAL: 3810 sq. ft
BELOW GRADE: 20 sq. ft, FLOOR 2: 1575 sq. ft, FLOOR 3: 2215 sq. ft
EXCLUDED AREAS: BASEMENT: 1222 sq. ft, GARAGE: 614 sq. ft, WALLS: 291 sq. ft



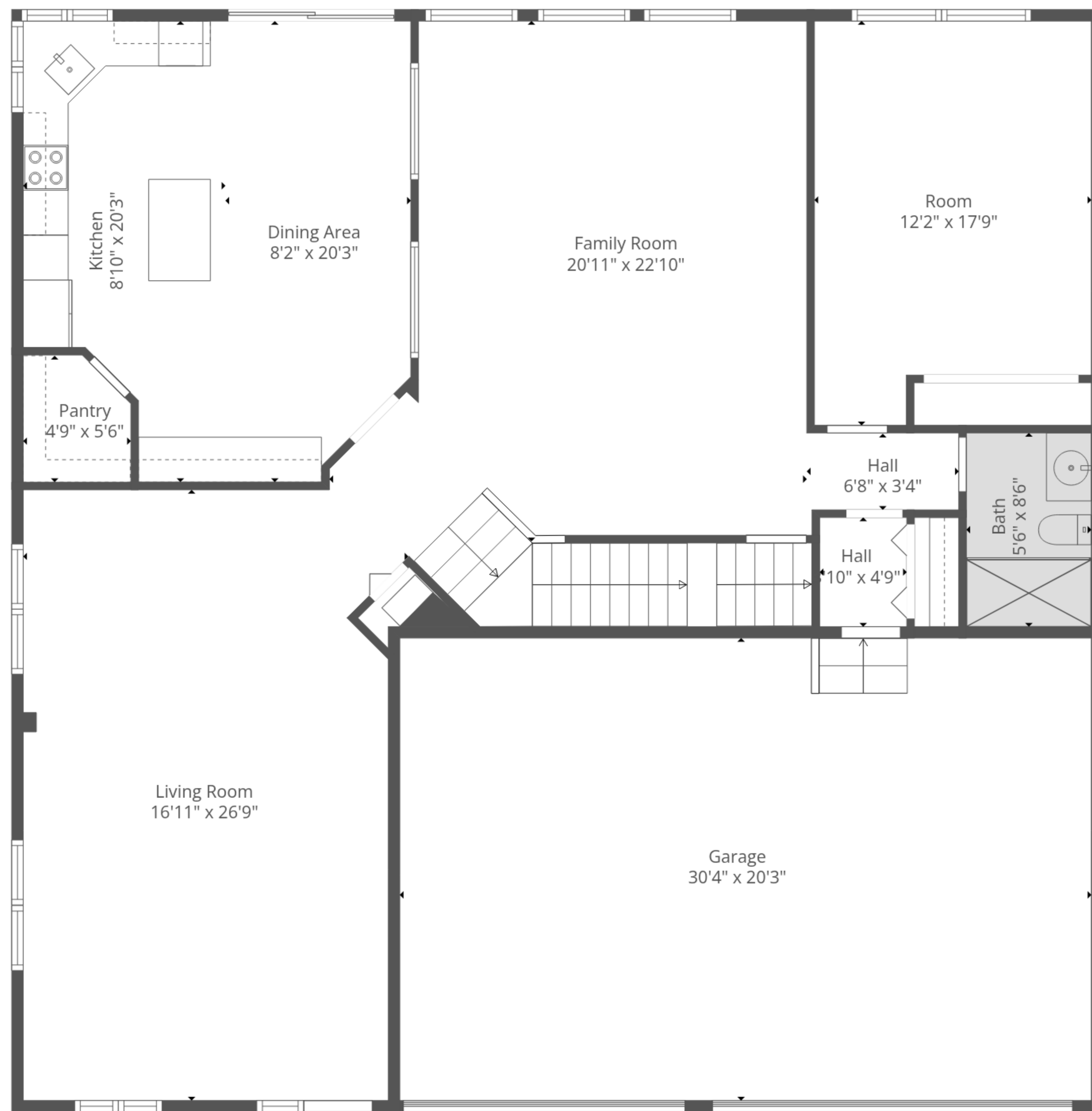
TOTAL: 3810 sq. ft

BELOW GRADE: 20 sq. ft, FLOOR 2: 1575 sq. ft, FLOOR 3: 2215 sq. ft
 EXCLUDED AREAS: BASEMENT: 1222 sq. ft, GARAGE: 614 sq. ft, WALLS: 291 sq. ft



TOTAL: 3810 sq. ft

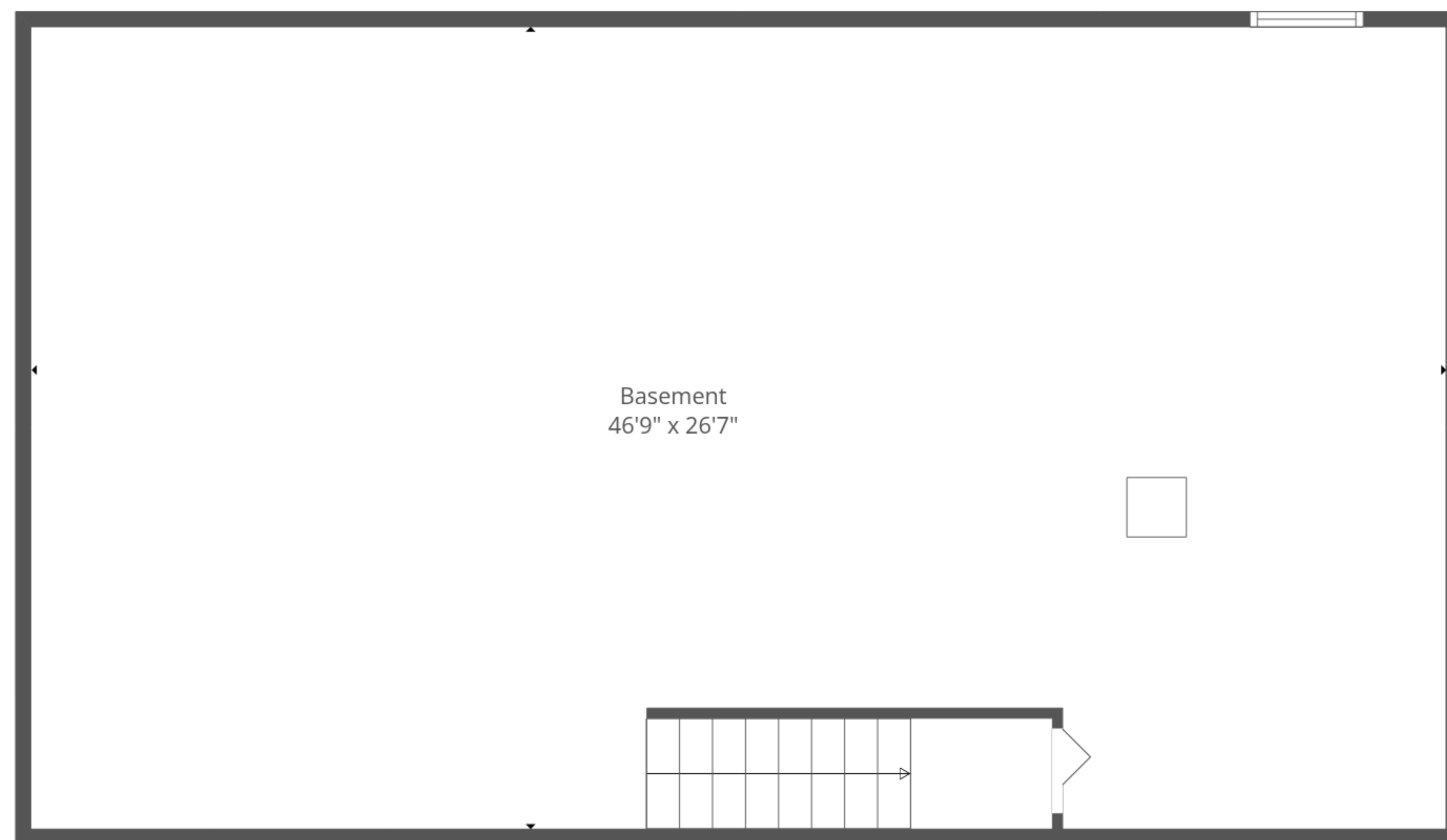
BELOW GRADE: 20 sq. ft, FLOOR 2: 1575 sq. ft, FLOOR 3: 2215 sq. ft
 EXCLUDED AREAS: BASEMENT: 1222 sq. ft, GARAGE: 614 sq. ft, WALLS: 291 sq. ft



Floor 2



Floor 3



Floor 1

TOTAL: 3810 sq. ft
 BELOW GRADE: 20 sq. ft, FLOOR 2: 1575 sq. ft, FLOOR 3: 2215 sq. ft
 EXCLUDED AREAS: BASEMENT: 1222 sq. ft, GARAGE: 614 sq. ft, WALLS: 291 sq. ft