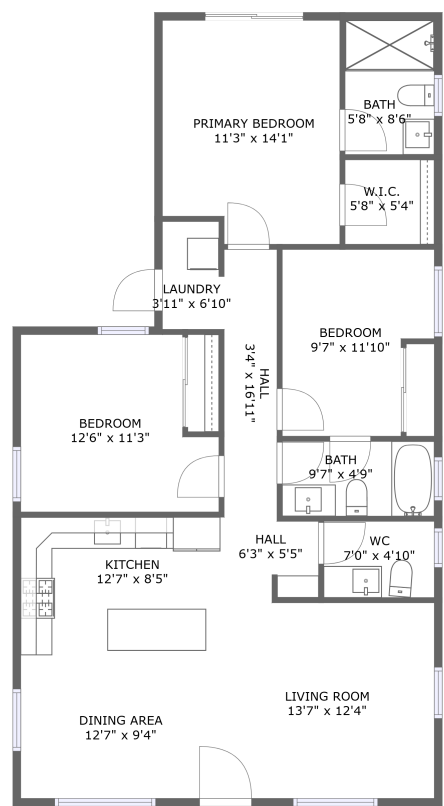


Home report

5530 Geer Avenue, Du Ray Place, Los Angeles, Los Angeles County, California, United States, 90016



FLOOR 1

Total Area: 1110 sq. ft

Floor 1: 1110 sq. ft

Excluded: Walls: 75 sq. ft

Property summary

 **1** Floors

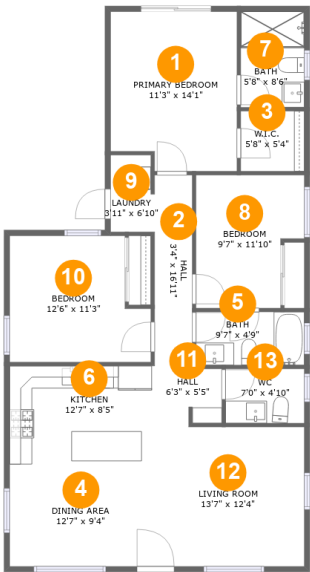
 **3** Bedrooms

 **2** Bathrooms

 **1** Half baths

Home report

5530 Geer Avenue, Du Ray Place, Los Angeles, Los Angeles County, California, United States, 90016



Room dimensions

Floor 1

Total:1110sqft

Excluded: 0sqft

#		Max Dimensions	sqft	Included
1	Primary Bedroom	11'3" x 14'1"	152 sq. ft	Yes
2	Hall	3'4" x 16'11"	57 sq. ft	Yes
3	W.I.C.	5'8" x 5'4"	30 sq. ft	Yes
4	Dining Area	12'7" x 9'4"	118 sq. ft	Yes
5	Bath	9'7" x 4'9"	45 sq. ft	Yes
6	Kitchen	12'7" x 8'5"	106 sq. ft	Yes
7	Bath	5'8" x 8'6"	48 sq. ft	Yes
8	Bedroom	9'7" x 11'10"	100 sq. ft	Yes
9	Laundry	3'11" x 6'10"	25 sq. ft	Yes
10	Bedroom	12'6" x 11'3"	126 sq. ft	Yes
11	Hall	6'3" x 5'5"	32 sq. ft	Yes

Home report

5530 Geer Avenue, Du Ray Place, Los Angeles, Los Angeles
County, California, United States, 90016

#		Max Dimensions	sqft	Included
12	Living Room	13'7" x 12'4"	168 sq. ft	Yes
13	WC	7'0" x 4'10"	34 sq. ft	Yes

5530 Geer Avenue, Du Ray Place, Los Angeles, Los Angeles
County, California, United States, 90016

1 Floor 1 - Primary Bedroom



Max Dimensions: 11'3" x 14'1"
Calculated Area: 152 sq. ft
Included: Yes

Heated: Yes
Finished: Yes
Enclosed: Yes
Contiguous: Yes
Permitted: Yes
Wet space: No
Addition: No
Conversion: No

2 Floor 1 - Hall



Max Dimensions: 3'4" x 16'11"
Calculated Area: 57 sq. ft
Included: Yes

Heated: Yes
Finished: Yes
Enclosed: Yes
Contiguous: Yes
Permitted: Yes
Wet space: No
Addition: No
Conversion: No

5530 Geer Avenue, Du Ray Place, Los Angeles, Los Angeles
County, California, United States, 90016

3 Floor 1 - W.I.C.



Max Dimensions: 5'8" x 5'4"
Calculated Area: 30 sq. ft
Included: Yes

Heated: Yes
Finished: Yes
Enclosed: Yes
Contiguous: Yes
Permitted: Yes
Wet space: No
Addition: No
Conversion: No

4 Floor 1 - Dining Area



Max Dimensions: 12'7" x 9'4"
Calculated Area: 118 sq. ft
Included: Yes

Heated: Yes
Finished: Yes
Enclosed: Yes
Contiguous: Yes
Permitted: Yes
Wet space: No
Addition: No
Conversion: No

5 Floor 1 - Bath



Max Dimensions: 9'7" x 4'9"
Calculated Area: 45 sq. ft
Included: Yes

Heated: Yes
Finished: Yes
Enclosed: Yes
Contiguous: Yes
Permitted: Yes
Wet space: Yes
Addition: No
Conversion: No

5530 Geer Avenue, Du Ray Place, Los Angeles, Los Angeles
County, California, United States, 90016

6 Floor 1 - Kitchen



Max Dimensions: 12'7" x 8'5"
Calculated Area: 106 sq. ft
Included: Yes

Heated: Yes
Finished: Yes
Enclosed: Yes
Contiguous: Yes
Permitted: Yes
Wet space: No
Addition: No
Conversion: No

7 Floor 1 - Bath



Max Dimensions: 5'8" x 8'6"
Calculated Area: 48 sq. ft
Included: Yes

Heated: Yes
Finished: Yes
Enclosed: Yes
Contiguous: Yes
Permitted: Yes
Wet space: Yes
Addition: No
Conversion: No

8 Floor 1 - Bedroom



Max Dimensions: 9'7" x 11'10"
Calculated Area: 100 sq. ft
Included: Yes

Heated: Yes
Finished: Yes
Enclosed: Yes
Contiguous: Yes
Permitted: Yes
Wet space: No
Addition: No
Conversion: No

5530 Geer Avenue, Du Ray Place, Los Angeles, Los Angeles
County, California, United States, 90016

9 Floor 1 - Laundry



Max Dimensions: 3'11" x 6'10"
Calculated Area: 25 sq. ft
Included: Yes

Heated: Yes
Finished: Yes
Enclosed: Yes
Contiguous: Yes
Permitted: Yes
Wet space: No
Addition: No
Conversion: No

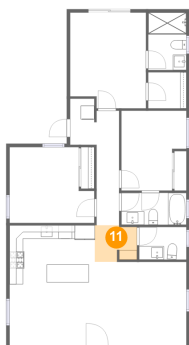
10 Floor 1 - Bedroom



Max Dimensions: 12'6" x 11'3"
Calculated Area: 126 sq. ft
Included: Yes

Heated: Yes
Finished: Yes
Enclosed: Yes
Contiguous: Yes
Permitted: Yes
Wet space: No
Addition: No
Conversion: No

11 Floor 1 - Hall



Max Dimensions: 6'3" x 5'5"
Calculated Area: 32 sq. ft
Included: Yes

Heated: Yes
Finished: Yes
Enclosed: Yes
Contiguous: Yes
Permitted: Yes
Wet space: No
Addition: No
Conversion: No

5530 Geer Avenue, Du Ray Place, Los Angeles, Los Angeles
County, California, United States, 90016

12 Floor 1 - Living Room



Max Dimensions: 13'7" x 12'4"
Calculated Area: 168 sq. ft
Included: Yes

Heated: Yes
Finished: Yes
Enclosed: Yes
Contiguous: Yes
Permitted: Yes
Wet space: No
Addition: No
Conversion: No

13 Floor 1 - WC



Max Dimensions: 7'0" x 4'10"
Calculated Area: 34 sq. ft
Included: Yes

Heated: Yes
Finished: Yes
Enclosed: Yes
Contiguous: Yes
Permitted: Yes
Wet space: Yes
Addition: No
Conversion: No