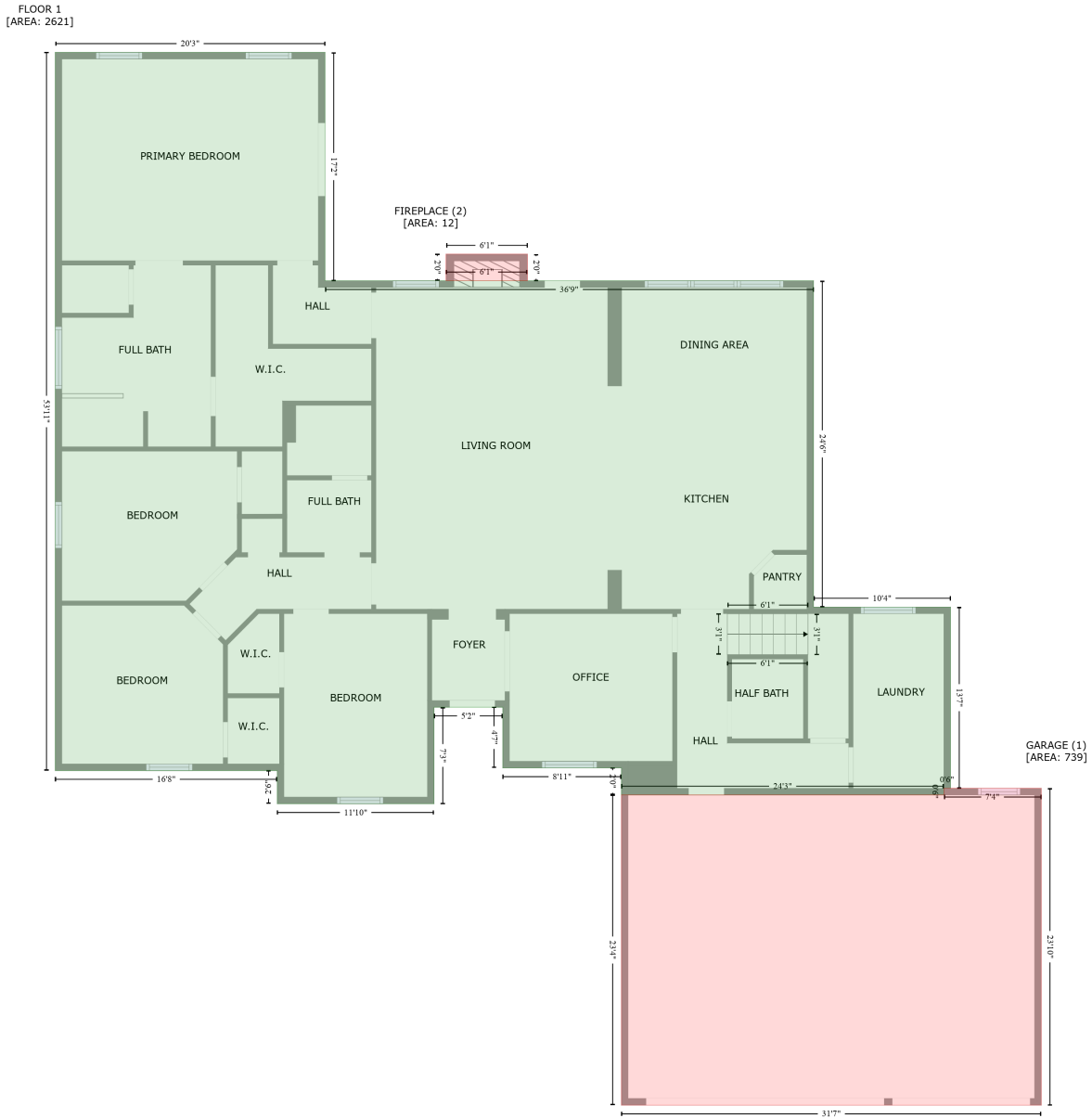


310 Parkway Dr, Lumberton, TX, US

Gross Living Area: 2891 sq. ft



Space	Area (sq. ft)	Calculation
FLOOR 1 (Living area)	2621	Coordinate Polygon Area Algorithm using inches $-((244.6 + 244.6) * (-2.9 - 203.1) + (244.6 + 685.5) * (203.1 - 203.1) + (685.5 + 685.5) * (203.1 - 497.1) + (685.5 + 809.2) * (497.1 - 497.1) + (809.2 + 809.2) * (497.1 - 660.5) + (809.2 + 803.2) * (660.5 - 660.5) + (803.2 + 803.2) * (660.5 - 666.5) + (803.2 + 512.1) * (666.5 - 666.5) + (512.1 + 512.1) * (666.5 - 642.2) + (512.1 + 405) * (642.2 - 642.2) + (405 + 405) * (642.2 - 587.5) + (405 + 343) * (587.5 - 587.5) + (343 + 343) * (587.5 - 674.5) + (343 + 201.5) * (674.5 - 674.5) + (201.5 + 201.5) * (674.5 - 644.6) + (201.5 + 1.1) * (644.6 - 644.6) + (1.1 + 1.1) * (644.6 - 2.9) + (1.1 + 244.6) * (-2.9 - -2.9)) * 0.5 * 0.00694$

310 Parkway Dr,Lumberton,TX,US

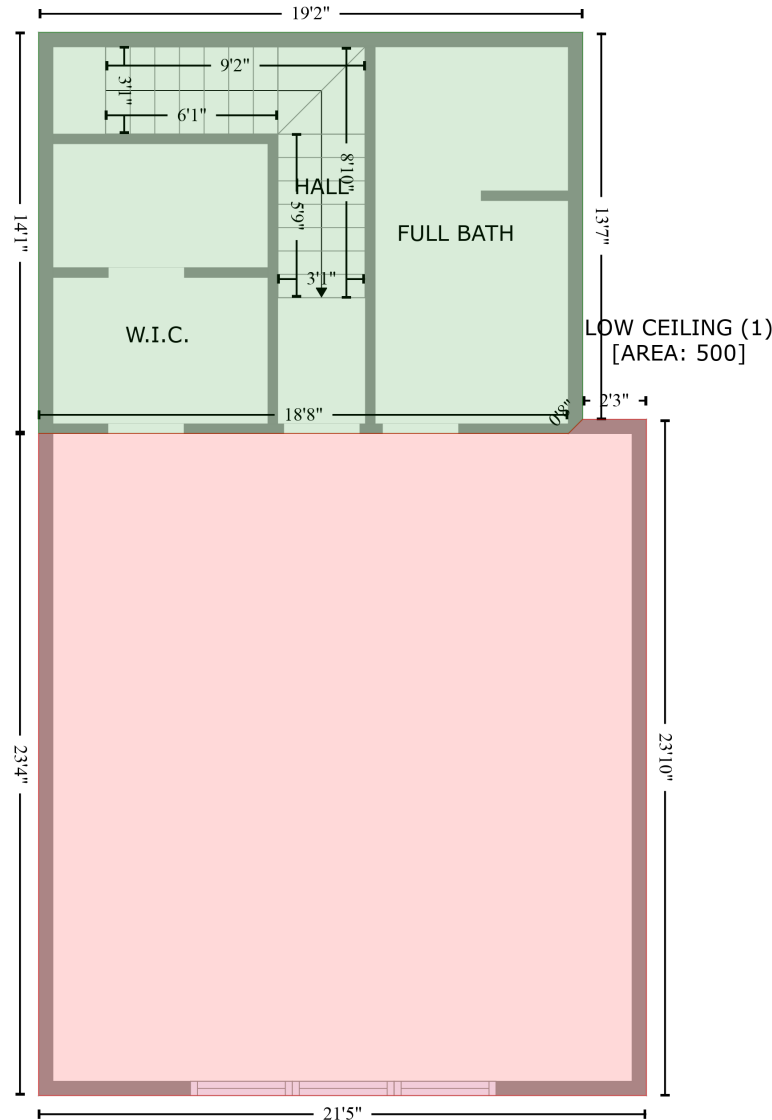
Gross Living Area: 2891 sq. ft

Space	Area (sq. ft)	Calculation <small>Coordinate Polygon Area Algorithm using inches</small>
GARAGE (Non-living area)	739	$-\left((891 + 891) * (660.5 - 946.2) + (891 + 512.1) * (946.2 - 946.2) + (512.1 + 512.1) * (946.2 - 666.5) + (512.1 + 803.2) * (666.5 - 666.5) + (803.2 + 803.2) * (666.5 - 660.5) + (803.2 + 891) * (660.5 - 660.5)\right) * 0.5 * 0.00694$
FIREPLACE (Non-living area)	12	$-\left((427.3 + 427.3) * (179 - 203.1) + (427.3 + 353.8) * (203.1 - 203.1) + (353.8 + 353.8) * (203.1 - 179) + (353.8 + 427.3) * (179 - 179)\right) * 0.5 * 0.00694$

310 Parkway Dr, Lumberton, TX, US

Gross Living Area: 2891 sq. ft

FLOOR 2
[AREA: 270]



Space	Area (sq. ft)	Calculation <small>Coordinate Polygon Area Algorithm using inches</small>
FLOOR 2 (Living area)	270	$-\left((809.2 + 809.2) * (497.1 - 660.5) + (809.2 + 803.2) * (660.5 - 666.5) + (803.2 + 579.4) * (666.5 - 666.5) + (579.4 + 579.4) * (666.5 - 497.1) + (579.4 + 809.2) * (497.1 - 497.1)\right) * 0.5 * 0.00694$
LOW CEILING (Non-living area)	500	$-\left((836.1 + 836.1) * (660.5 - 946.2) + (836.1 + 579.4) * (946.2 - 946.2) + (579.4 + 579.4) * (946.2 - 666.5) + (579.4 + 803.2) * (666.5 - 666.5) + (803.2 + 809.2) * (666.5 - 660.5) + (809.2 + 836.1) * (660.5 - 660.5)\right) * 0.5 * 0.00694$