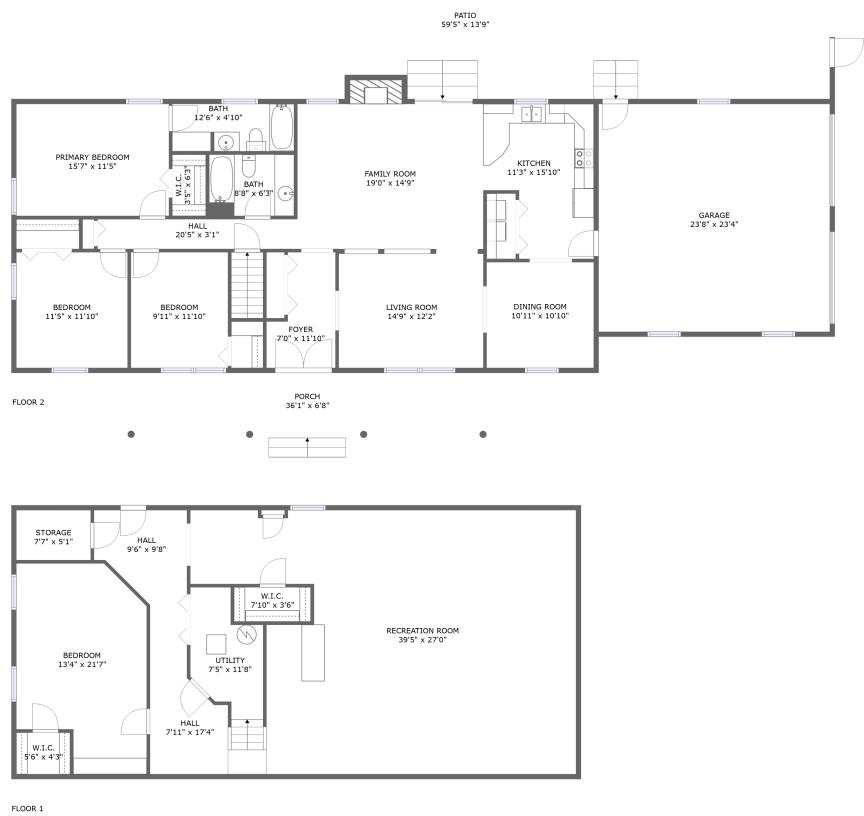


Home report

26 Carriage Lane, Laymantown, Troutville, Botetourt County,
Virginia, United States, 24175



Total GLA: 1682 sq. ft

Below Ground: 1485 sq. ft, Floor 2: 1682 sq. ft

Excluded: Storage 45 sq. ft, Utility 101 sq. ft, Patio 594 sq. ft, Porch 244 sq. ft, Garage 587 sq. ft, Fireplace 16 sq. ft

Property summary

 **2** Floors

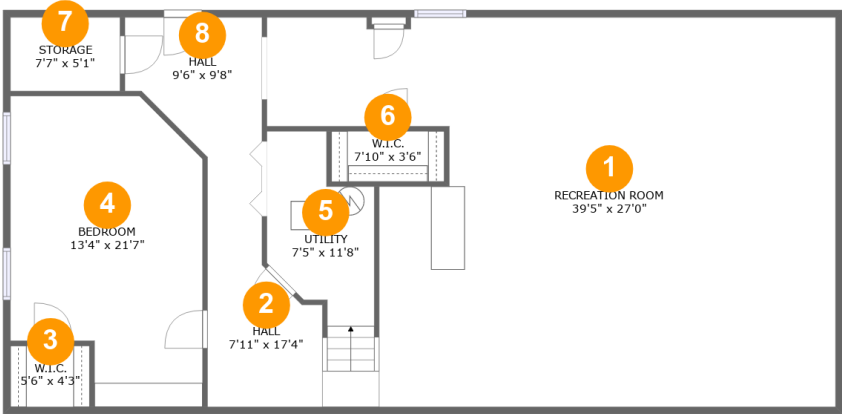
 **4** Bedrooms

 **2** Bathrooms

 **1** Garages

Home report

26 Carriage Lane, Laymantown, Troutville, Botetourt County,
Virginia, United States, 24175



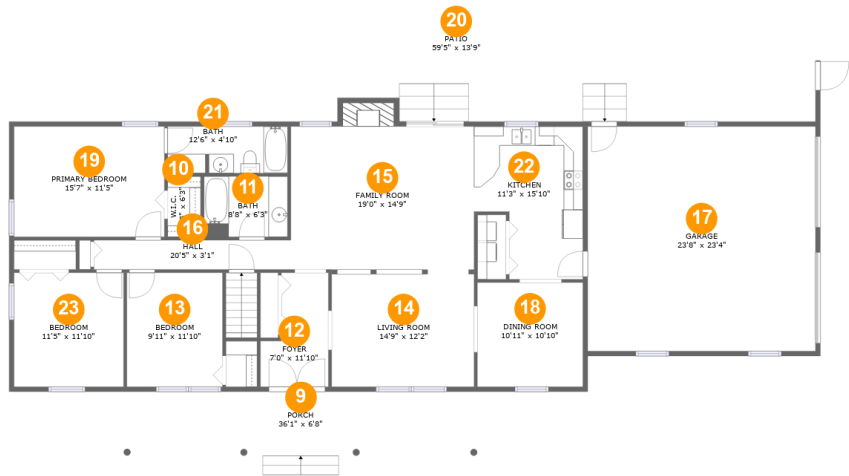
Room dimensions

Floor 1 Below ground Total:1485sqft Excluded: 146sqft

#		Max Dimensions	sqft	Included
1	Recreation Room	39'5" x 27'0"	891 sq. ft	Yes
2	Hall	7'11" x 17'4"	99 sq. ft	Yes
3	W.I.C.	5'6" x 4'3"	23 sq. ft	Yes
4	Bedroom	13'4" x 21'7"	251 sq. ft	Yes
5	Utility	7'5" x 11'8"	99 sq. ft	No
6	W.I.C.	7'10" x 3'6"	27 sq. ft	Yes
7	Storage	7'7" x 5'1"	39 sq. ft	No
8	Hall	9'6" x 9'8"	76 sq. ft	Yes

Home report

26 Carriage Lane, Laymantown, Troutville, Botetourt County,
Virginia, United States, 24175



Room dimensions

Floor 2 Total:1682sqft Excluded: 1441sqft

#		Max Dimensions	sqft	Included
9	Porch	36'1" x 6'8"	244 sq. ft	No
10	W.I.C.	3'5" x 6'3"	22 sq. ft	Yes
11	Bath	8'8" x 6'3"	55 sq. ft	Yes
12	Foyer	7'0" x 11'10"	68 sq. ft	Yes
13	Bedroom	9'11" x 11'10"	118 sq. ft	Yes
14	Living Room	14'9" x 12'2"	180 sq. ft	Yes
15	Family Room	19'0" x 14'9"	296 sq. ft	Yes
16	Hall	20'5" x 3'1"	62 sq. ft	Yes
17	Garage	23'8" x 23'4"	551 sq. ft	No
18	Dining Room	10'11" x 10'10"	119 sq. ft	Yes
19	Primary Bedroom	15'7" x 11'5"	179 sq. ft	Yes

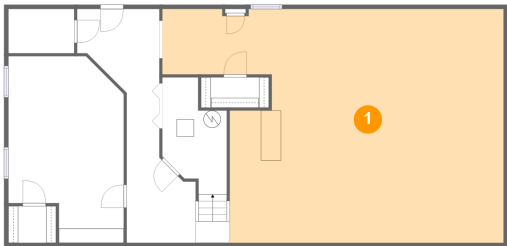
Home report

26 Carriage Lane, Laymantown, Troutville, Botetourt County,
Virginia, United States, 24175

#		Max Dimensions	sqft	Included
20	Patio	59'5" x 13'9"	594 sq. ft	No
21	Bath	12'6" x 4'10"	60 sq. ft	Yes
22	Kitchen	11'3" x 15'10"	153 sq. ft	Yes
23	Bedroom	11'5" x 11'10"	135 sq. ft	Yes

26 Carriage Lane, Laymantown, Troutville, Botetourt County,
Virginia, United States, 24175

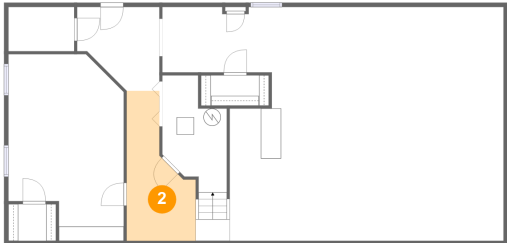
1 Floor 1 - Recreation Room



Max Dimensions: 39'5" x 27'0"
Calculated Area: 891 sq. ft
Included: Yes

Heated: Yes
Finished: Yes
Enclosed: Yes
Contiguous: Yes
Permitted: Yes
Wet space: No
Addition: No
Conversion: No

2 Floor 1 - Hall

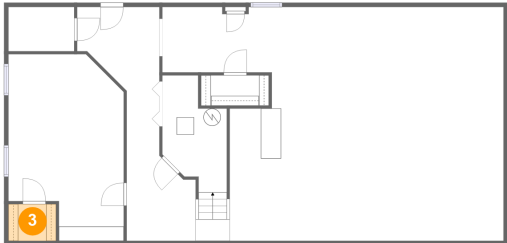


Max Dimensions: 7'11" x 17'4"
Calculated Area: 99 sq. ft
Included: Yes

Heated: Yes
Finished: Yes
Enclosed: Yes
Contiguous: Yes
Permitted: Yes
Wet space: No
Addition: No
Conversion: No

26 Carriage Lane, Laymantown, Troutville, Botetourt County,
Virginia, United States, 24175

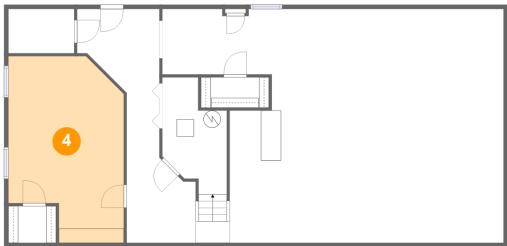
3 Floor 1 - W.I.C.



Max Dimensions: 5'6" x 4'3"
Calculated Area: 23 sq. ft
Included: Yes

Heated: Yes
Finished: Yes
Enclosed: Yes
Contiguous: Yes
Permitted: Yes
Wet space: No
Addition: No
Conversion: No

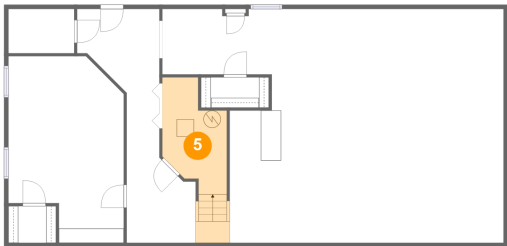
4 Floor 1 - Bedroom



Max Dimensions: 13'4" x 21'7"
Calculated Area: 251 sq. ft
Included: Yes

Heated: Yes
Finished: Yes
Enclosed: Yes
Contiguous: Yes
Permitted: Yes
Wet space: No
Addition: No
Conversion: No

5 Floor 1 - Utility

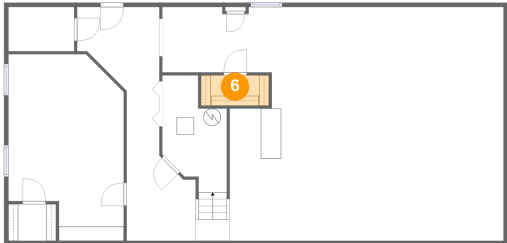


Max Dimensions: 7'5" x 11'8"
Calculated Area: 99 sq. ft
Included: No

Heated: Yes
Finished: No
Enclosed: Yes
Contiguous: Yes
Permitted: Yes
Wet space: No
Addition: No
Conversion: No

26 Carriage Lane, Laymantown, Troutville, Botetourt County,
Virginia, United States, 24175

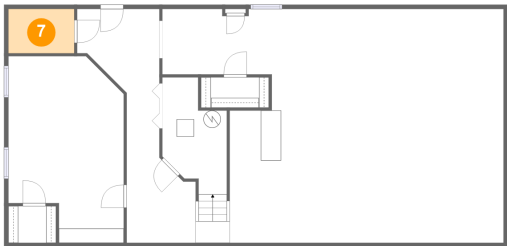
6 Floor 1 - W.I.C.



Max Dimensions: 7'10" x 3'6"
Calculated Area: 27 sq. ft
Included: Yes

Heated: Yes
Finished: Yes
Enclosed: Yes
Contiguous: Yes
Permitted: Yes
Wet space: No
Addition: No
Conversion: No

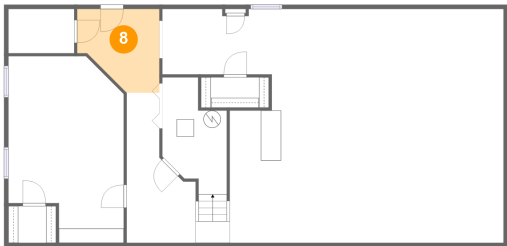
7 Floor 1 - Storage



Max Dimensions: 7'7" x 5'1"
Calculated Area: 39 sq. ft
Included: No

Heated: No
Finished: No
Enclosed: No
Contiguous: Yes
Permitted: Yes
Wet space: No
Addition: No
Conversion: No

8 Floor 1 - Hall

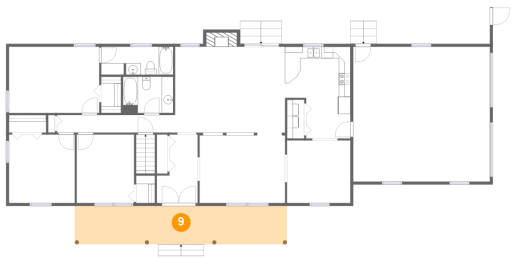


Max Dimensions: 9'6" x 9'8"
Calculated Area: 76 sq. ft
Included: Yes

Heated: Yes
Finished: Yes
Enclosed: Yes
Contiguous: Yes
Permitted: Yes
Wet space: No
Addition: No
Conversion: No

26 Carriage Lane, Laymantown, Troutville, Botetourt County,
Virginia, United States, 24175

9 Floor 2 - Porch



Max Dimensions: 36'1" x 6'8"
Calculated Area: 244 sq. ft
Included: No

Heated: No
Finished: Yes
Enclosed: No
Contiguous: Yes
Permitted: Yes
Wet space: No
Addition: No
Conversion: No

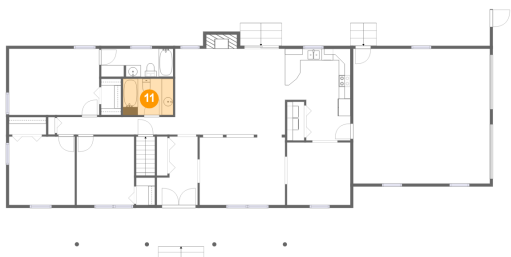
10 Floor 2 - W.I.C.



Max Dimensions: 3'5" x 6'3"
Calculated Area: 22 sq. ft
Included: Yes

Heated: Yes
Finished: Yes
Enclosed: Yes
Contiguous: Yes
Permitted: Yes
Wet space: No
Addition: No
Conversion: No

11 Floor 2 - Bath



Max Dimensions: 8'8" x 6'3"
Calculated Area: 55 sq. ft
Included: Yes

Heated: Yes
Finished: Yes
Enclosed: Yes
Contiguous: Yes
Permitted: Yes
Wet space: Yes
Addition: No
Conversion: No

26 Carriage Lane, Laymantown, Troutville, Botetourt County,
Virginia, United States, 24175

12 Floor 2 - Foyer



Max Dimensions: 7'0" x 11'10"
Calculated Area: 68 sq. ft
Included: Yes

Heated: Yes
Finished: Yes
Enclosed: Yes
Contiguous: Yes
Permitted: Yes
Wet space: No
Addition: No
Conversion: No

13 Floor 2 - Bedroom



Max Dimensions: 9'11" x 11'10"
Calculated Area: 118 sq. ft
Included: Yes

Heated: Yes
Finished: Yes
Enclosed: Yes
Contiguous: Yes
Permitted: Yes
Wet space: No
Addition: No
Conversion: No

14 Floor 2 - Living Room



Max Dimensions: 14'9" x 12'2"
Calculated Area: 180 sq. ft
Included: Yes

Heated: Yes
Finished: Yes
Enclosed: Yes
Contiguous: Yes
Permitted: Yes
Wet space: No
Addition: No
Conversion: No

26 Carriage Lane, Laymantown, Troutville, Botetourt County,
Virginia, United States, 24175

15 Floor 2 - Family Room



Max Dimensions: 19'0" x 14'9"
Calculated Area: 296 sq. ft
Included: Yes

Heated: Yes
Finished: Yes
Enclosed: Yes
Contiguous: Yes
Permitted: Yes
Wet space: No
Addition: No
Conversion: No

16 Floor 2 - Hall



Max Dimensions: 20'5" x 3'1"
Calculated Area: 62 sq. ft
Included: Yes

Heated: Yes
Finished: Yes
Enclosed: Yes
Contiguous: Yes
Permitted: Yes
Wet space: No
Addition: No
Conversion: No

17 Floor 2 - Garage



Max Dimensions: 23'8" x 23'4"
Calculated Area: 551 sq. ft
Included: No

Heated: No
Finished: No
Enclosed: Yes
Contiguous: Yes
Permitted: Yes
Wet space: No
Addition: No
Conversion: No

26 Carriage Lane, Laymantown, Troutville, Botetourt County,
Virginia, United States, 24175

18 Floor 2 - Dining Room



Max Dimensions: 10'11" x 10'10"
Calculated Area: 119 sq. ft
Included: Yes

Heated: Yes
Finished: Yes
Enclosed: Yes
Contiguous: Yes
Permitted: Yes
Wet space: No
Addition: No
Conversion: No

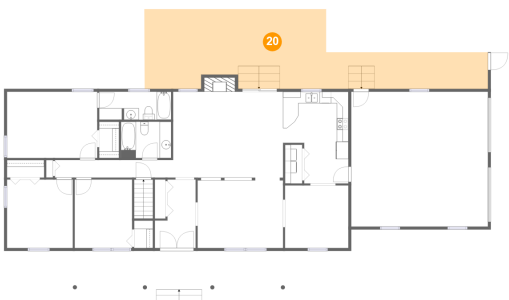
19 Floor 2 - Primary Bedroom



Max Dimensions: 15'7" x 11'5"
Calculated Area: 179 sq. ft
Included: Yes

Heated: Yes
Finished: Yes
Enclosed: Yes
Contiguous: Yes
Permitted: Yes
Wet space: No
Addition: No
Conversion: No

20 Floor 2 - Patio



Max Dimensions: 59'5" x 13'9"
Calculated Area: 594 sq. ft
Included: No

Heated: No
Finished: Yes
Enclosed: No
Contiguous: Yes
Permitted: Yes
Wet space: No
Addition: No
Conversion: No

26 Carriage Lane, Laymantown, Troutville, Botetourt County,
Virginia, United States, 24175

21 Floor 2 - Bath



Max Dimensions: 12'6" x 4'10"
Calculated Area: 60 sq. ft
Included: Yes

Heated: Yes
Finished: Yes
Enclosed: Yes
Contiguous: Yes
Permitted: Yes
Wet space: Yes
Addition: No
Conversion: No

22 Floor 2 - Kitchen



Max Dimensions: 11'3" x 15'10"
Calculated Area: 153 sq. ft
Included: Yes

Heated: Yes
Finished: Yes
Enclosed: Yes
Contiguous: Yes
Permitted: Yes
Wet space: No
Addition: No
Conversion: No

23 Floor 2 - Bedroom



Max Dimensions: 11'5" x 11'10"
Calculated Area: 135 sq. ft
Included: Yes

Heated: Yes
Finished: Yes
Enclosed: Yes
Contiguous: Yes
Permitted: Yes
Wet space: No
Addition: No
Conversion: No