

# 2926 Southeast 67th Avenue, South Tabor, Portland, Multnomah County, Oregon, United



## Property Summary

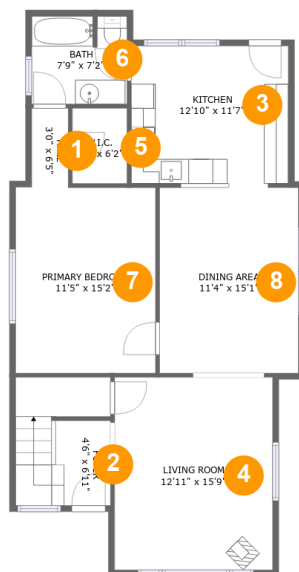
**0** garages    **3** bedrooms    **2** bathrooms    **0** half baths

**2** floors

**1,342** Gross Living Area sqft

**1,495** total sqft

## 2926 Southeast 67th Avenue, South Tabor, Portland, Multnomah County, Oregon, United



### Room Dimensions

Floor 1

Total sqft: 973

Living area: 973

#	Room name	Dimensions	Area (sqft)	Counted as Living Area
1	Hall	3'0" x 6'5"	19 sq. ft	Yes
2	Foyer	4'6" x 6'11"	79 sq. ft	Yes
3	Kitchen	12'10" x 11'7"	146 sq. ft	Yes
4	Living Room	12'11" x 15'9"	203 sq. ft	Yes
5	W.i.c.	4'6" x 6'2"	27 sq. ft	Yes
6	Bath	7'9" x 7'2"	55 sq. ft	Yes
7	Primary Bedroom	11'5" x 15'2"	173 sq. ft	Yes
8	Dining Area	11'4" x 15'1"	171 sq. ft	Yes

**2926 Southeast 67th Avenue, South Tabor, Portland, Multnomah County, Oregon, United**



**Room Dimensions**

**Floor 2**

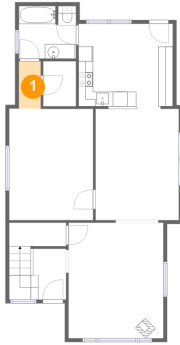
**Total sqft: 522**

**Living area: 369**

#	Room name	Dimensions	Area (sqft)	Counted as Living Area
9	Bedroom	18'7" x 11'3"	125 sq. ft	Yes
10	Hall	3'10" x 7'1"	49 sq. ft	Yes
11	Bath	8'1" x 5'10"	43 sq. ft	Yes
12	Bedroom	12'0" x 12'2"	98 sq. ft	Yes

# 2926 Southeast 67th Avenue, South Tabor, Portland, Multnomah County, Oregon, United

## 1 Floor 1 - Hall



Dimensions: 3'0" x 6'5"  
Area: 19 sq. ft  
Counted as Living Area:  
Yes

Heated: Yes  
Finished: Yes  
Enclosed: Yes  
Contiguous:  
Yes  
Permitted: Yes  
Wet Space: No  
Addition: No  
Conversion: No

## 2 Floor 1 - Foyer

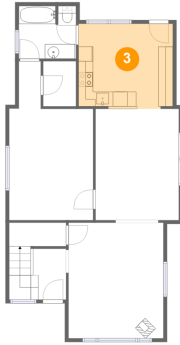


Dimensions: 4'6" x 6'11"  
Area: 79 sq. ft  
Counted as Living Area:  
Yes

Heated: Yes  
Finished: Yes  
Enclosed: Yes  
Contiguous:  
Yes  
Permitted: Yes  
Wet Space: No  
Addition: No  
Conversion: No

# 2926 Southeast 67th Avenue, South Tabor, Portland, Multnomah County, Oregon, United

## 3 Floor 1 - Kitchen



Dimensions: 12'10" x 11'7"  
Area: 146 sq. ft  
Counted as Living Area:  
Yes

Heated: Yes  
Finished: Yes  
Enclosed: Yes  
Contiguous:  
Yes  
Permitted: Yes  
Wet Space: No  
Addition: No  
Conversion: No

## 4 Floor 1 - Living Room



Dimensions: 12'11" x 15'9"  
Area: 203 sq. ft  
Counted as Living Area:  
Yes

Heated: Yes  
Finished: Yes  
Enclosed: Yes  
Contiguous:  
Yes  
Permitted: Yes  
Wet Space: No  
Addition: No  
Conversion: No

## 5 Floor 1 - W.i.c.

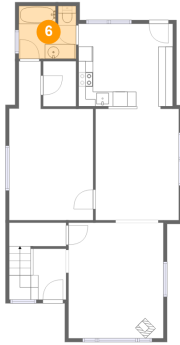


Dimensions: 4'6" x 6'2"  
Area: 27 sq. ft  
Counted as Living Area:  
Yes

Heated: Yes  
Finished: Yes  
Enclosed: Yes  
Contiguous:  
Yes  
Permitted: Yes  
Wet Space: No  
Addition: No  
Conversion: No

# 2926 Southeast 67th Avenue, South Tabor, Portland, Multnomah County, Oregon, United

## 6 Floor 1 - Bath



Dimensions: 7'9" x 7'2"  
Area: 55 sq. ft  
Counted as Living Area:  
Yes

Heated: Yes  
Finished: Yes  
Enclosed: Yes  
Contiguous:  
Yes  
Permitted: Yes  
Wet Space: Yes  
Addition: No  
Conversion: No

## 7 Floor 1 - Primary Bedroom



Dimensions: 11'5" x 15'2"  
Area: 173 sq. ft  
Counted as Living Area:  
Yes

Heated: Yes  
Finished: Yes  
Enclosed: Yes  
Contiguous:  
Yes  
Permitted: Yes  
Wet Space: No  
Addition: No  
Conversion: No

## 8 Floor 1 - Dining Area

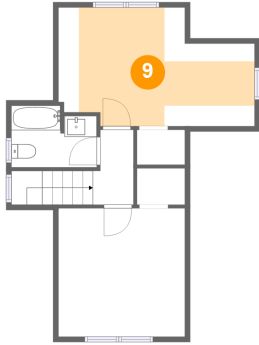


Dimensions: 11'4" x 15'1"  
Area: 171 sq. ft  
Counted as Living Area:  
Yes

Heated: Yes  
Finished: Yes  
Enclosed: Yes  
Contiguous:  
Yes  
Permitted: Yes  
Wet Space: No  
Addition: No  
Conversion: No

# 2926 Southeast 67th Avenue, South Tabor, Portland, Multnomah County, Oregon, United

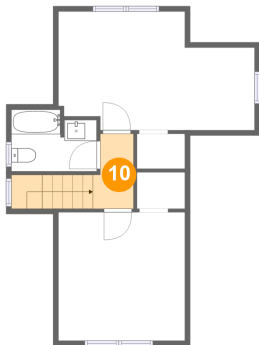
## 9 Floor 2 - Bedroom



Dimensions: 18'7" x 11'3"  
Area: 125 sq. ft  
Counted as Living Area:  
Yes

Heated: Yes  
Finished: Yes  
Enclosed: Yes  
Contiguous:  
Yes  
Permitted: Yes  
Wet Space: No  
Addition: No  
Conversion: No

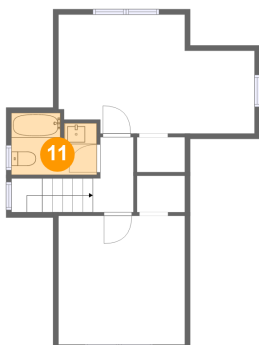
## 10 Floor 2 - Hall



Dimensions: 3'10" x 7'1"  
Area: 49 sq. ft  
Counted as Living Area:  
Yes

Heated: Yes  
Finished: Yes  
Enclosed: Yes  
Contiguous:  
Yes  
Permitted: Yes  
Wet Space: No  
Addition: No  
Conversion: No

## 11 Floor 2 - Bath

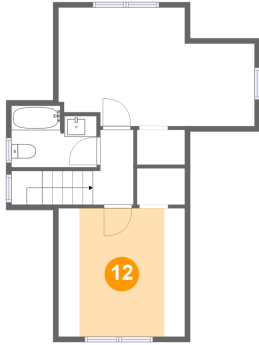


Dimensions: 8'1" x 5'10"  
Area: 43 sq. ft  
Counted as Living Area:  
Yes

Heated: Yes  
Finished: Yes  
Enclosed: Yes  
Contiguous:  
Yes  
Permitted: Yes  
Wet Space: Yes  
Addition: No  
Conversion: No

**2926 Southeast 67th Avenue, South Tabor,  
Portland, Multnomah County, Oregon, United**

**12 Floor 2 - Bedroom**



**Dimensions:** 12'0" x 12'2"  
**Area:** 98 sq. ft  
**Counted as Living Area:**  
Yes

**Heated:** Yes  
**Finished:** Yes  
**Enclosed:** Yes  
**Contiguous:**  
Yes  
**Permitted:** Yes  
**Wet Space:** No  
**Addition:** No  
**Conversion:** No