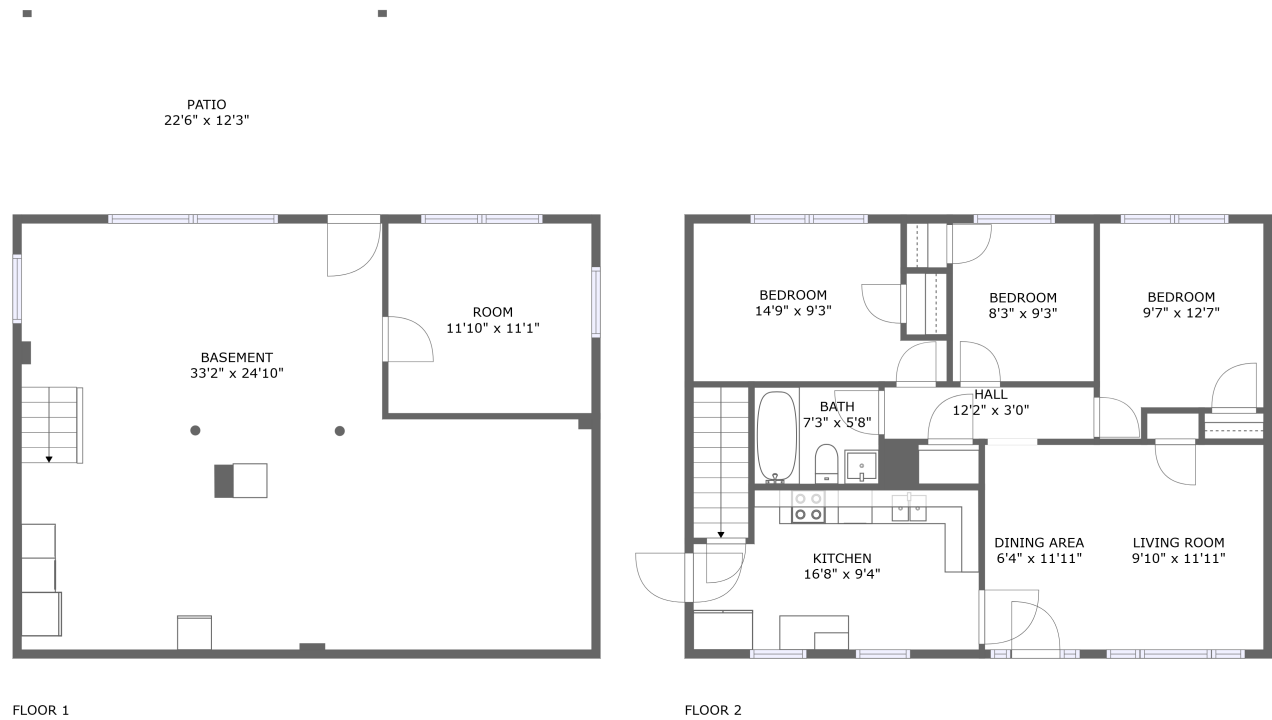


Home report

2627 Radford Road Northeast, Roanoke, Virginia 24012, United States



Total Area: 884 sq. ft
Floor 1: 0 sq. ft, Floor 2: 884 sq. ft
Excluded: Basement 741 sq. ft, Room 143 sq. ft, Outdoor Patio 277 sq. ft

Property summary

 **2** Floors

 **3** Bedrooms

 **1** Bathrooms

Home report

2627 Radford Road Northeast, Roanoke, Virginia 24012, United States



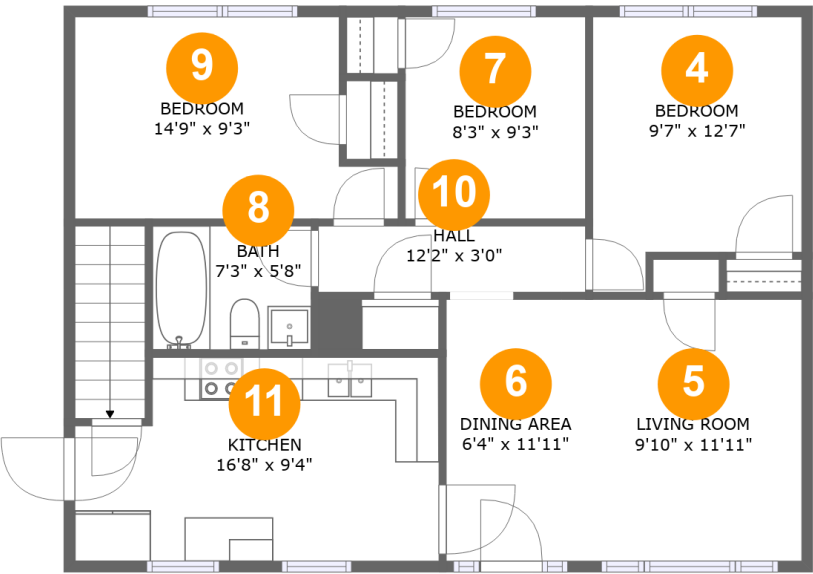
Room dimensions

Floor 1 Total:0sqft Excluded: 1161sqft

| # | | Max Dimensions | sqft | Included |
|---|----------|----------------|------------|----------|
| 1 | Room | 11'10" x 11'1" | 131 sq. ft | No |
| 2 | Patio | 22'6" x 12'3" | 277 sq. ft | No |
| 3 | Basement | 33'2" x 24'10" | 686 sq. ft | No |

Home report

2627 Radford Road Northeast, Roanoke, Virginia 24012, United States

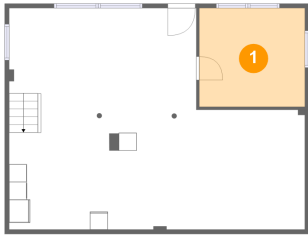


Room dimensions

Floor 2 Total:884sqft Excluded: 0sqft

| # | | Max Dimensions | sqft | Included |
|----|-------------|----------------|------------|----------|
| 4 | Bedroom | 9'7" x 12'7" | 107 sq. ft | Yes |
| 5 | Living Room | 9'10" x 11'11" | 118 sq. ft | Yes |
| 6 | Dining Area | 6'4" x 11'11" | 76 sq. ft | Yes |
| 7 | Bedroom | 8'3" x 9'3" | 76 sq. ft | Yes |
| 8 | Bath | 7'3" x 5'8" | 41 sq. ft | Yes |
| 9 | Bedroom | 14'9" x 9'3" | 118 sq. ft | Yes |
| 10 | Hall | 12'2" x 3'0" | 37 sq. ft | Yes |
| 11 | Kitchen | 16'8" x 9'4" | 144 sq. ft | Yes |

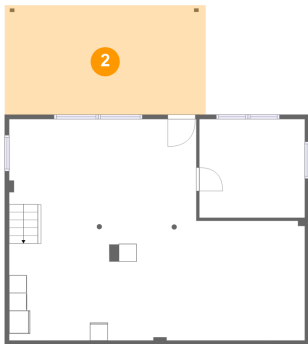
1 Floor 1 - Room



Max Dimensions: 11'10" x 11'1"
Calculated Area: 131 sq. ft
Included: No

Heated: Yes
Finished: Yes
Enclosed: Yes
Contiguous: No
Permitted: Yes
Wet space: No
Addition: No
Conversion: No

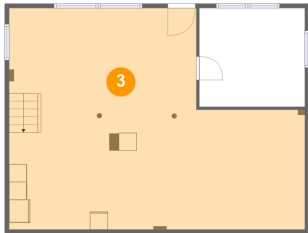
2 Floor 1 - Patio



Max Dimensions: 22'6" x 12'3"
Calculated Area: 277 sq. ft
Included: No

Heated: No
Finished: Yes
Enclosed: No
Contiguous: Yes
Permitted: Yes
Wet space: No
Addition: No
Conversion: No

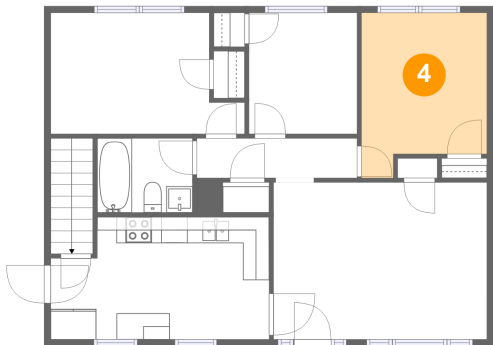
3 Floor 1 - Basement



Max Dimensions: 33'2" x 24'10"
Calculated Area: 686 sq. ft
Included: No

Heated: Yes
Finished: No
Enclosed: Yes
Contiguous: Yes
Permitted: Yes
Wet space: No
Addition: No
Conversion: No

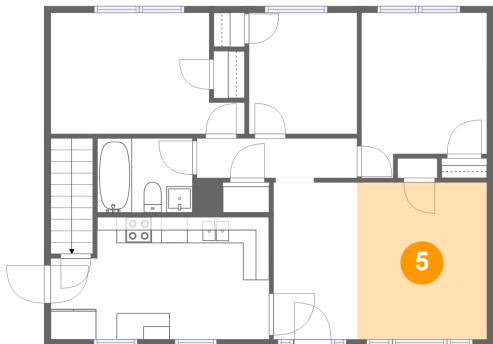
4 Floor 2 - Bedroom



Max Dimensions: 9'7" x 12'7"
Calculated Area: 107 sq. ft
Included: Yes

Heated: Yes
Finished: Yes
Enclosed: Yes
Contiguous: Yes
Permitted: Yes
Wet space: No
Addition: No
Conversion: No

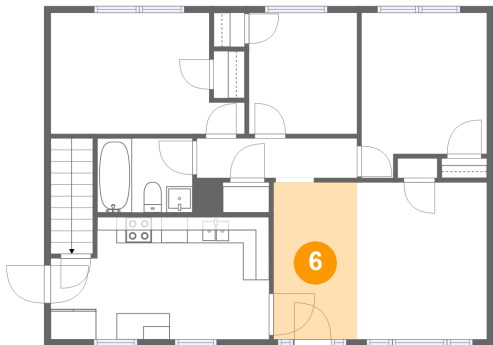
5 Floor 2 - Living Room



Max Dimensions: 9'10" x 11'11"
Calculated Area: 118 sq. ft
Included: Yes

Heated: Yes
Finished: Yes
Enclosed: Yes
Contiguous: Yes
Permitted: Yes
Wet space: No
Addition: No
Conversion: No

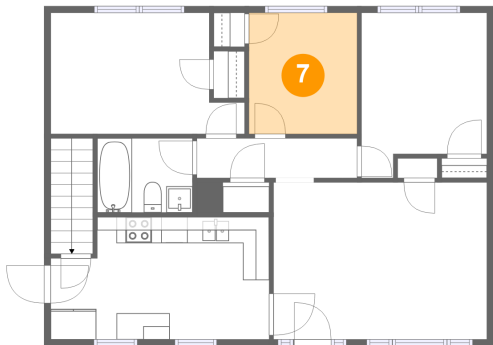
6 Floor 2 - Dining Area



Max Dimensions: 6'4" x 11'11"
Calculated Area: 76 sq. ft
Included: Yes

Heated: Yes
Finished: Yes
Enclosed: Yes
Contiguous: Yes
Permitted: Yes
Wet space: No
Addition: No
Conversion: No

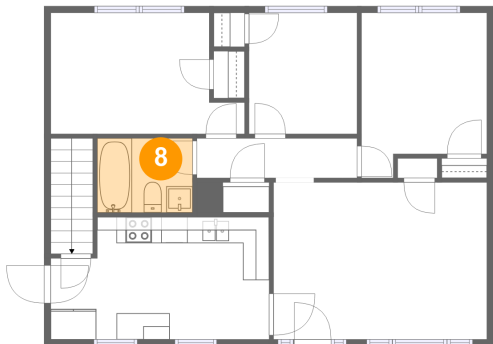
7 Floor 2 - Bedroom



Max Dimensions: 8'3" x 9'3"
Calculated Area: 76 sq. ft
Included: Yes

Heated: Yes
Finished: Yes
Enclosed: Yes
Contiguous: Yes
Permitted: Yes
Wet space: No
Addition: No
Conversion: No

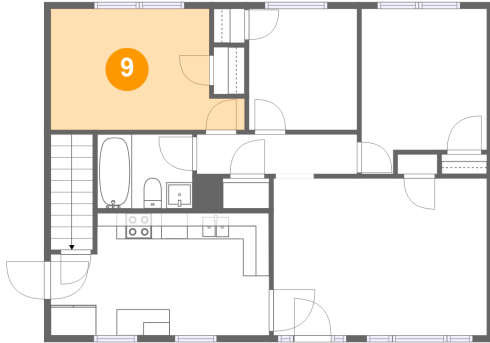
8 Floor 2 - Bath



Max Dimensions: 7'3" x 5'8"
Calculated Area: 41 sq. ft
Included: Yes

Heated: Yes
Finished: Yes
Enclosed: Yes
Contiguous: Yes
Permitted: Yes
Wet space: Yes
Addition: No
Conversion: No

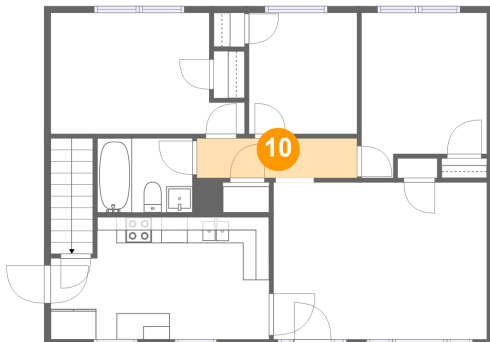
9 Floor 2 - Bedroom



Max Dimensions: 14'9" x 9'3"
Calculated Area: 118 sq. ft
Included: Yes

Heated: Yes
Finished: Yes
Enclosed: Yes
Contiguous: Yes
Permitted: Yes
Wet space: No
Addition: No
Conversion: No

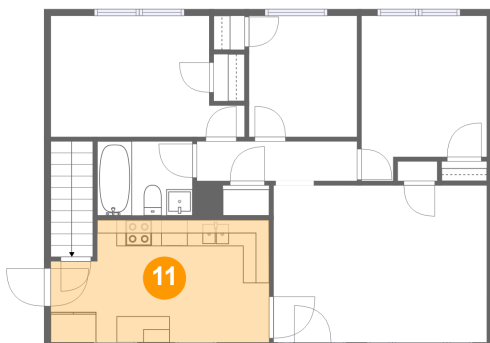
10 Floor 2 - Hall



Max Dimensions: 12'2" x 3'0"
Calculated Area: 37 sq. ft
Included: Yes

Heated: Yes
Finished: Yes
Enclosed: Yes
Contiguous: Yes
Permitted: Yes
Wet space: No
Addition: No
Conversion: No

11 Floor 2 - Kitchen



Max Dimensions: 16'8" x 9'4"
Calculated Area: 144 sq. ft
Included: Yes

Heated: Yes
Finished: Yes
Enclosed: Yes
Contiguous: Yes
Permitted: Yes
Wet space: No
Addition: No
Conversion: No