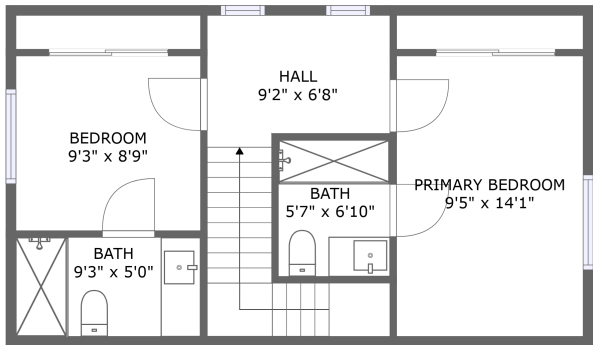
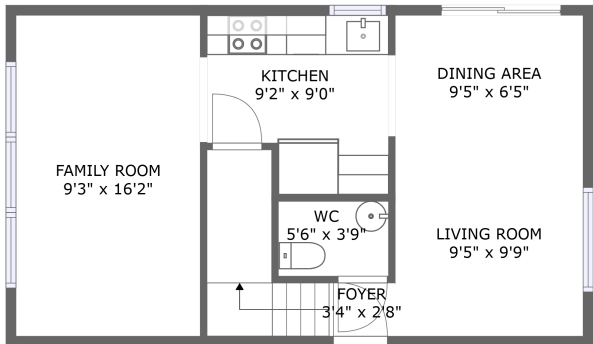


Home report

8040 19th Avenue Northwest, Loyal Heights, Seattle, King
County, Washington, United States, 98117




FLOOR 2



FLOOR 1

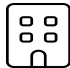
Property summary


 **0** Garages


 **2** Bedrooms

 **2** Bathrooms

 **1** Half baths

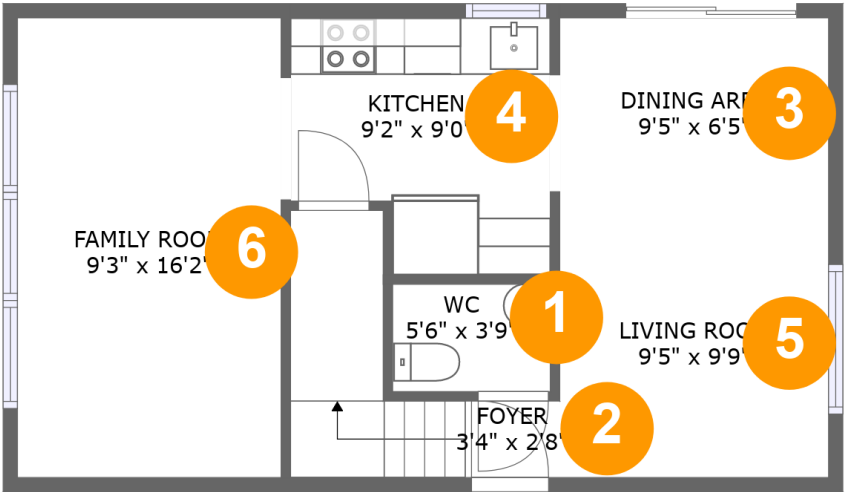
 **2** Floors

 **927** Gross living area sqft

 **1,012** Total sqft

Home report

8040 19th Avenue Northwest, Loyal Heights, Seattle, King
County, Washington, United States, 98117



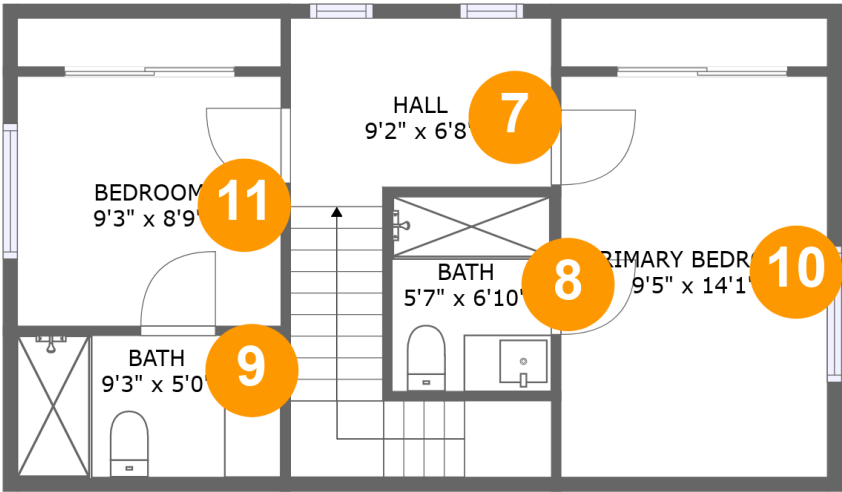
Room dimensions

Floor 1 Total sqft: 506 Living area: 506

#		Dimensions	sqft	Counted as living area
1	WC	5'6" x 3'9"	21 sq. ft	Yes
2	Foyer	3'4" x 2'8"	47 sq. ft	Yes
3	Dining Area	9'5" x 6'5"	61 sq. ft	Yes
4	Kitchen	9'2" x 9'0"	73 sq. ft	Yes
5	Living Room	9'5" x 9'9"	92 sq. ft	Yes
6	Family Room	9'3" x 16'2"	150 sq. ft	Yes

Home report

8040 19th Avenue Northwest, Loyal Heights, Seattle, King
County, Washington, United States, 98117



Room dimensions

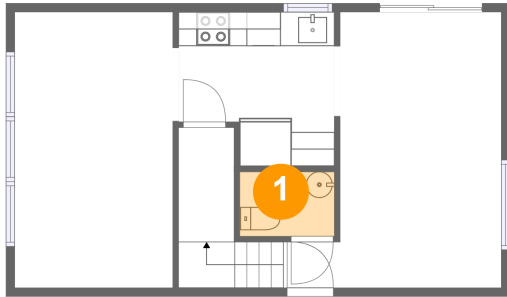
Floor 2 Total sqft: 506 Living area: 421

#		Dimensions	sqft	Counted as living area
7	Hall	9'2" x 6'8"	88 sq. ft	Yes
8	Bath	5'7" x 6'10"	38 sq. ft	Yes
9	Bath	9'3" x 5'0"	41 sq. ft	Yes
10	Primary Bedroom	9'5" x 14'1"	127 sq. ft	Yes
11	Bedroom	9'3" x 8'9"	82 sq. ft	Yes

Home report

8040 19th Avenue Northwest, Loyal Heights, Seattle, King
County, Washington, United States, 98117

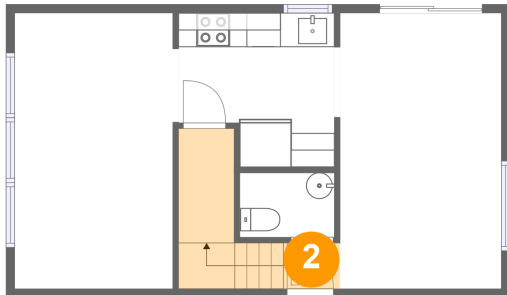
1 Floor 1 - WC



Dimensions: 5'6" x 3'9"
Area: 21 sq. ft
Counted as living area: Yes

Heated: Yes
Finished: Yes
Enclosed: Yes
Contiguous: Yes
Permitted: Yes
Wet space: Yes
Addition: No
Conversion: No

2 Floor 1 - Foyer



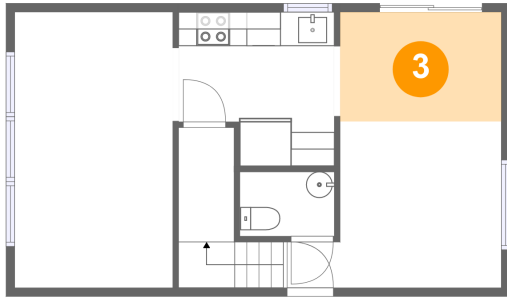
Dimensions: 3'4" x 2'8"
Area: 47 sq. ft
Counted as living area: Yes

Heated: Yes
Finished: Yes
Enclosed: Yes
Contiguous: Yes
Permitted: Yes
Wet space: No
Addition: No
Conversion: No

Home report

8040 19th Avenue Northwest, Loyal Heights, Seattle, King
County, Washington, United States, 98117

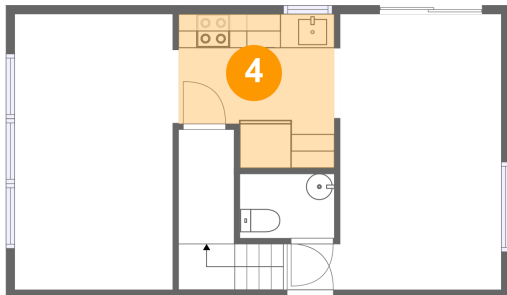
3 Floor 1 - Dining Area



Dimensions: 9'5" x 6'5"
Area: 61 sq. ft
Counted as living area: Yes

Heated: Yes
Finished: Yes
Enclosed: Yes
Contiguous: Yes
Permitted: Yes
Wet space: No
Addition: No
Conversion: No

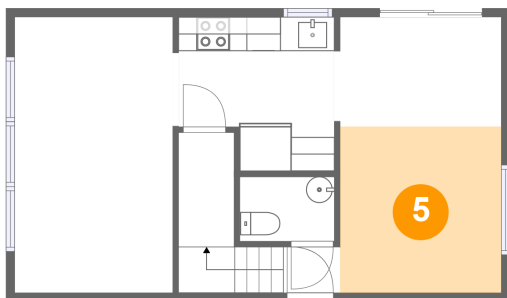
4 Floor 1 - Kitchen



Dimensions: 9'2" x 9'0"
Area: 73 sq. ft
Counted as living area: Yes

Heated: Yes
Finished: Yes
Enclosed: Yes
Contiguous: Yes
Permitted: Yes
Wet space: No
Addition: No
Conversion: No

5 Floor 1 - Living Room



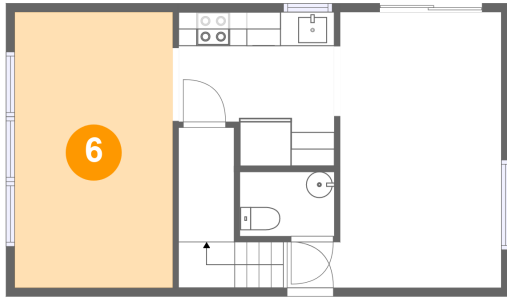
Dimensions: 9'5" x 9'9"
Area: 92 sq. ft
Counted as living area: Yes

Heated: Yes
Finished: Yes
Enclosed: Yes
Contiguous: Yes
Permitted: Yes
Wet space: No
Addition: No
Conversion: No

Home report

8040 19th Avenue Northwest, Loyal Heights, Seattle, King
County, Washington, United States, 98117

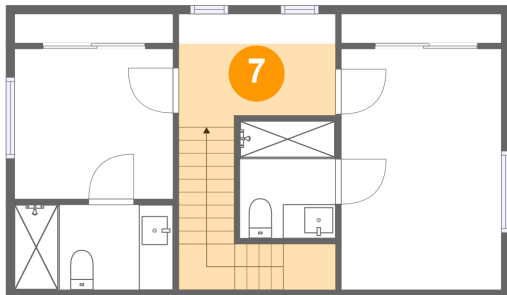
6 Floor 1 - Family Room



Dimensions: 9'3" x 16'2"
Area: 150 sq. ft
Counted as living area: Yes

Heated: Yes
Finished: Yes
Enclosed: Yes
Contiguous: Yes
Permitted: Yes
Wet space: No
Addition: No
Conversion: No

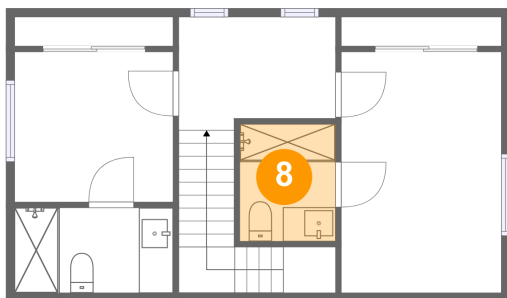
7 Floor 2 - Hall



Dimensions: 9'2" x 6'8"
Area: 88 sq. ft
Counted as living area: Yes

Heated: Yes
Finished: Yes
Enclosed: Yes
Contiguous: Yes
Permitted: Yes
Wet space: No
Addition: No
Conversion: No

8 Floor 2 - Bath



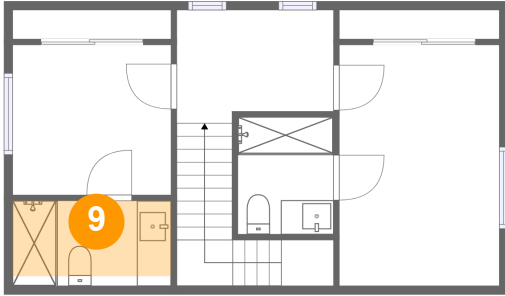
Dimensions: 5'7" x 6'10"
Area: 38 sq. ft
Counted as living area: Yes

Heated: Yes
Finished: Yes
Enclosed: Yes
Contiguous: Yes
Permitted: Yes
Wet space: Yes
Addition: No
Conversion: No

Home report

8040 19th Avenue Northwest, Loyal Heights, Seattle, King
County, Washington, United States, 98117

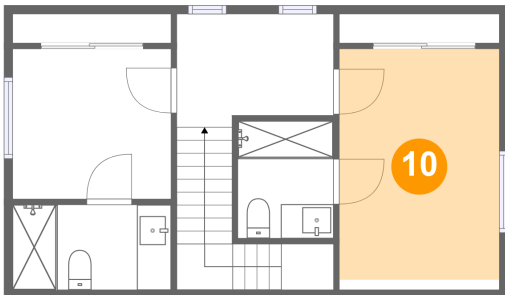
9 Floor 2 - Bath



Dimensions: 9'3" x 5'0"
Area: 41 sq. ft
Counted as living area: Yes

Heated: Yes
Finished: Yes
Enclosed: Yes
Contiguous: Yes
Permitted: Yes
Wet space: Yes
Addition: No
Conversion: No

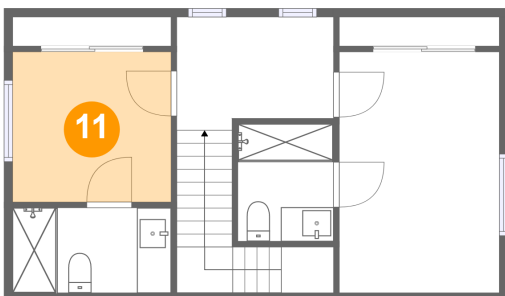
10 Floor 2 - Primary Bedroom



Dimensions: 9'5" x 14'1"
Area: 127 sq. ft
Counted as living area: Yes

Heated: Yes
Finished: Yes
Enclosed: Yes
Contiguous: Yes
Permitted: Yes
Wet space: No
Addition: No
Conversion: No

11 Floor 2 - Bedroom



Dimensions: 9'3" x 8'9"
Area: 82 sq. ft
Counted as living area: Yes

Heated: Yes
Finished: Yes
Enclosed: Yes
Contiguous: Yes
Permitted: Yes
Wet space: No
Addition: No
Conversion: No