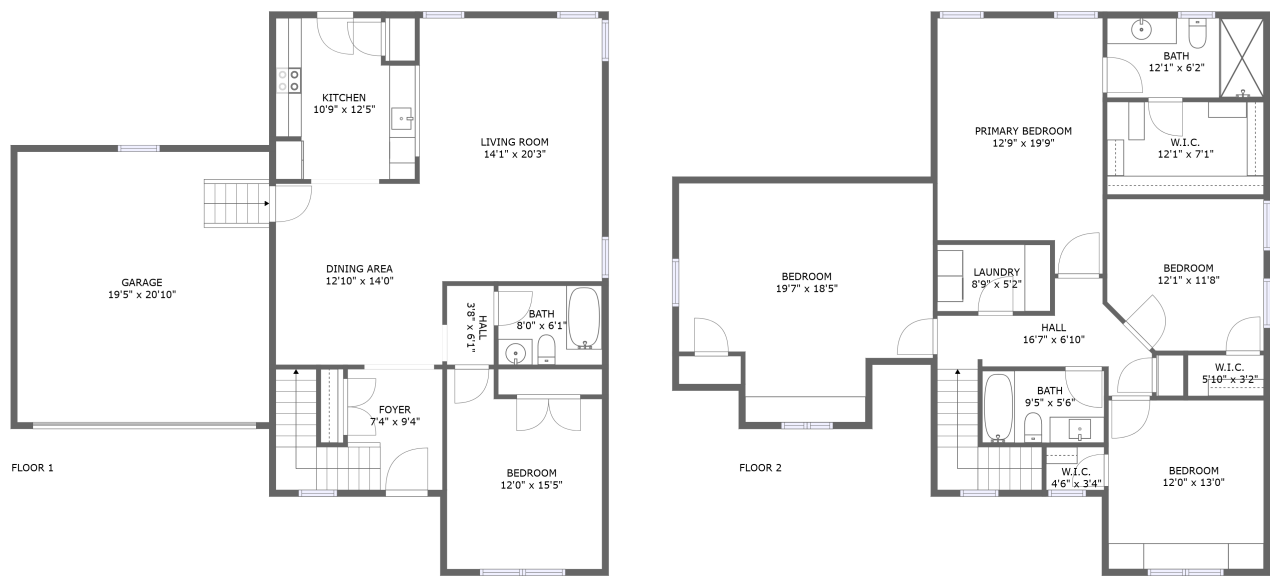




Home report


3009 Ridge Dr,Toano,VA,US




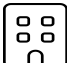
Property summary


**1** Garages


**5** Bedrooms

**3** Bathrooms

**0** Half baths

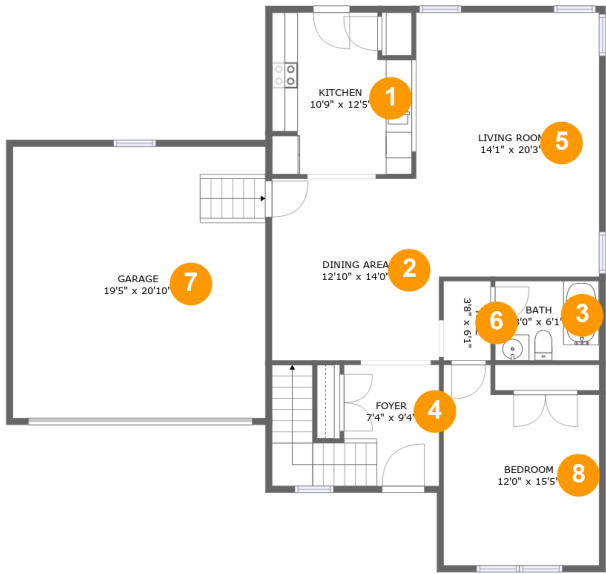
**2** Floors

**2,464** Gross living area sqft

**2,900** Total sqft

Home report

3009 Ridge Dr,Toano,VA,US



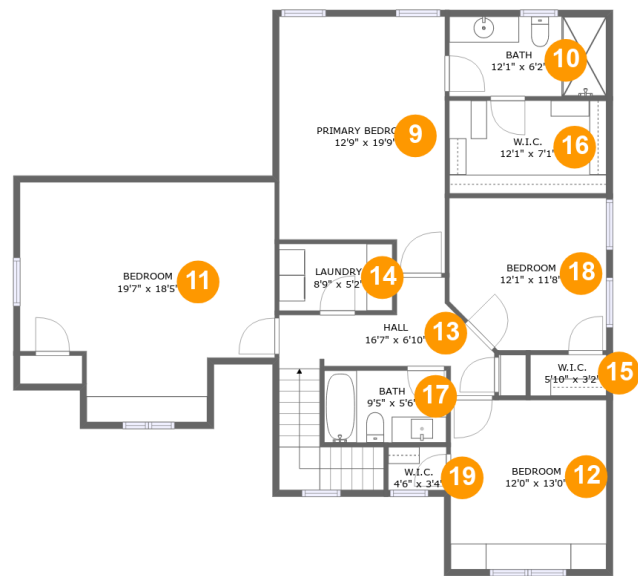
Room dimensions

Floor 1 Total sqft: 1493 Living area: 1057

#		Dimensions	sqft	Counted as living area
1	Kitchen	10'9" x 12'5"	126 sq. ft	Yes
2	Dining Area	12'10" x 14'0"	180 sq. ft	Yes
3	Bath	8'0" x 6'1"	49 sq. ft	Yes
4	Foyer	7'4" x 9'4"	105 sq. ft	Yes
5	Living Room	14'1" x 20'3"	272 sq. ft	Yes
6	Hall	3'8" x 6'1"	22 sq. ft	Yes
7	Garage	19'5" x 20'10"	405 sq. ft	No
8	Bedroom	12'0" x 15'5"	165 sq. ft	Yes

Home report

3009 Ridge Dr,Toano,VA,US



Room dimensions

Floor 2 Total sqft: 1407    Living area: 1407

#		Dimensions	sqft	Counted as living area
9	Primary Bedroom	12'9" x 19'9"	228 sq. ft	Yes
10	Bath	12'1" x 6'2"	74 sq. ft	Yes
11	Bedroom	19'7" x 18'5"	308 sq. ft	Yes
12	Bedroom	12'0" x 13'0"	156 sq. ft	Yes
13	Hall	16'7" x 6'10"	125 sq. ft	Yes
14	Laundry	8'9" x 5'2"	45 sq. ft	Yes
15	W.I.C.	5'10" x 3'2"	18 sq. ft	Yes
16	W.I.C.	12'1" x 7'1"	86 sq. ft	Yes
17	Bath	9'5" x 5'6"	52 sq. ft	Yes
18	Bedroom	12'1" x 11'8"	134 sq. ft	Yes
19	W.I.C.	4'6" x 3'4"	15 sq. ft	Yes

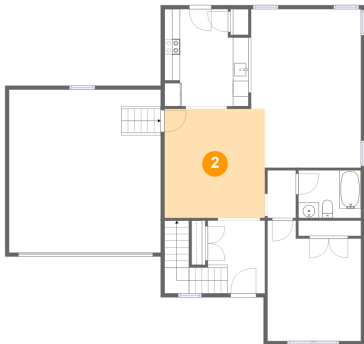
1 Floor 1 - Kitchen



Dimensions: 10'9" x 12'5"  
Area: 126 sq. ft  
Counted as living area: Yes

Heated: Yes  
Finished: Yes  
Enclosed: Yes  
Contiguous: Yes  
Permitted: Yes  
Wet space: No  
Addition: No  
Conversion: No

2 Floor 1 - Dining Area



Dimensions: 12'10" x 14'0"  
Area: 180 sq. ft  
Counted as living area: Yes

Heated: Yes  
Finished: Yes  
Enclosed: Yes  
Contiguous: Yes  
Permitted: Yes  
Wet space: No  
Addition: No  
Conversion: No

3 Floor 1 - Bath



Dimensions: 8'0" x 6'1"  
Area: 49 sq. ft  
Counted as living area: Yes

Heated: Yes  
Finished: Yes  
Enclosed: Yes  
Contiguous: Yes  
Permitted: Yes  
Wet space: Yes  
Addition: No  
Conversion: No

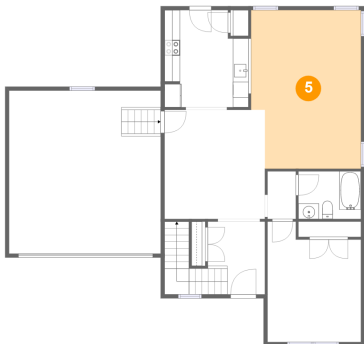
4 Floor 1 - Foyer



Dimensions: 7'4" x 9'4"  
Area: 105 sq. ft  
Counted as living area: Yes

Heated: Yes  
Finished: Yes  
Enclosed: Yes  
Contiguous: Yes  
Permitted: Yes  
Wet space: No  
Addition: No  
Conversion: No

5 Floor 1 - Living Room



Dimensions: 14'1" x 20'3"  
Area: 272 sq. ft  
Counted as living area: Yes

Heated: Yes  
Finished: Yes  
Enclosed: Yes  
Contiguous: Yes  
Permitted: Yes  
Wet space: No  
Addition: No  
Conversion: No

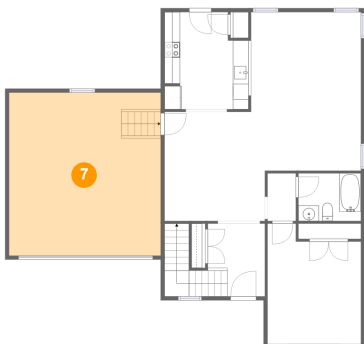
6 Floor 1 - Hall



Dimensions: 3'8" x 6'1"  
Area: 22 sq. ft  
Counted as living area: Yes

Heated: Yes  
Finished: Yes  
Enclosed: Yes  
Contiguous: Yes  
Permitted: Yes  
Wet space: No  
Addition: No  
Conversion: No

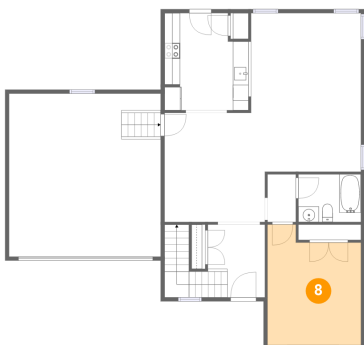
7 Floor 1 - Garage



Dimensions: 19'5" x 20'10"  
Area: 405 sq. ft  
Counted as living area: No

Heated: No  
Finished: No  
Enclosed: Yes  
Contiguous: Yes  
Permitted: Yes  
Wet space: No  
Addition: No  
Conversion: No

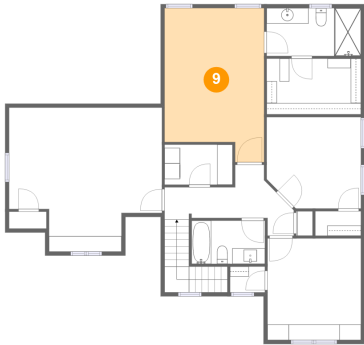
8 Floor 1 - Bedroom



Dimensions: 12'0" x 15'5"  
Area: 165 sq. ft  
Counted as living area: Yes

Heated: Yes  
Finished: Yes  
Enclosed: Yes  
Contiguous: Yes  
Permitted: Yes  
Wet space: No  
Addition: No  
Conversion: No

9 Floor 2 - Primary Bedroom



Dimensions: 12'9" x 19'9"  
Area: 228 sq. ft  
Counted as living area: Yes

Heated: Yes  
Finished: Yes  
Enclosed: Yes  
Contiguous: Yes  
Permitted: Yes  
Wet space: No  
Addition: No  
Conversion: No

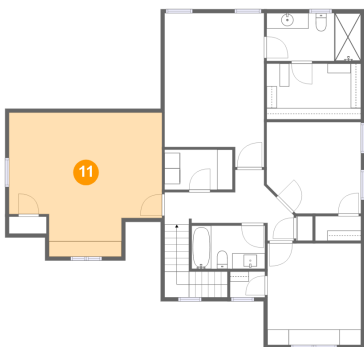
10 Floor 2 - Bath



Dimensions: 12'1" x 6'2"  
Area: 74 sq. ft  
Counted as living area: Yes

Heated: Yes  
Finished: Yes  
Enclosed: Yes  
Contiguous: Yes  
Permitted: Yes  
Wet space: Yes  
Addition: No  
Conversion: No

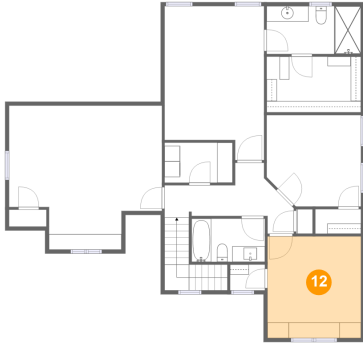
11 Floor 2 - Bedroom



Dimensions: 19'7" x 18'5"  
Area: 308 sq. ft  
Counted as living area: Yes

Heated: Yes  
Finished: Yes  
Enclosed: Yes  
Contiguous: Yes  
Permitted: Yes  
Wet space: No  
Addition: No  
Conversion: No

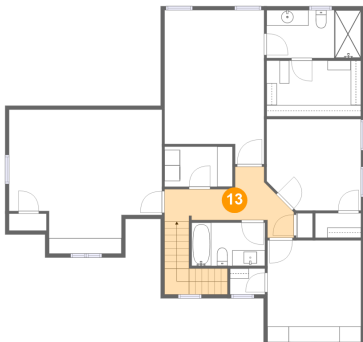
## 12 Floor 2 - Bedroom



Dimensions: 12'0" x 13'0"  
Area: 156 sq. ft  
Counted as living area: Yes

Heated: Yes  
Finished: Yes  
Enclosed: Yes  
Contiguous: Yes  
Permitted: Yes  
Wet space: No  
Addition: No  
Conversion: No

## 13 Floor 2 - Hall



Dimensions: 16'7" x 6'10"  
Area: 125 sq. ft  
Counted as living area: Yes

Heated: Yes  
Finished: Yes  
Enclosed: Yes  
Contiguous: Yes  
Permitted: Yes  
Wet space: No  
Addition: No  
Conversion: No

## 14 Floor 2 - Laundry

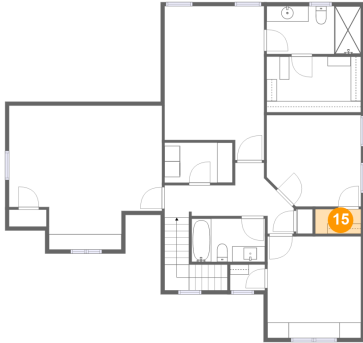


Dimensions: 8'9" x 5'2"  
Area: 45 sq. ft  
Counted as living area: Yes

Heated: Yes  
Finished: Yes  
Enclosed: Yes  
Contiguous: Yes  
Permitted: Yes  
Wet space: No  
Addition: No  
Conversion: No



## 15 Floor 2 - W.I.C.



Dimensions: 5'10" x 3'2"  
Area: 18 sq. ft  
Counted as living area: Yes

Heated: Yes  
Finished: Yes  
Enclosed: Yes  
Contiguous: Yes  
Permitted: Yes  
Wet space: No  
Addition: No  
Conversion: No

## 16 Floor 2 - W.I.C.



Dimensions: 12'1" x 7'1"  
Area: 86 sq. ft  
Counted as living area: Yes

Heated: Yes  
Finished: Yes  
Enclosed: Yes  
Contiguous: Yes  
Permitted: Yes  
Wet space: No  
Addition: No  
Conversion: No

## 17 Floor 2 - Bath



Dimensions: 9'5" x 5'6"  
Area: 52 sq. ft  
Counted as living area: Yes

Heated: Yes  
Finished: Yes  
Enclosed: Yes  
Contiguous: Yes  
Permitted: Yes  
Wet space: Yes  
Addition: No  
Conversion: No

18 Floor 2 - Bedroom



Dimensions: 12'1" x 11'8"  
Area: 134 sq. ft  
Counted as living area: Yes

Heated: Yes  
Finished: Yes  
Enclosed: Yes  
Contiguous: Yes  
Permitted: Yes  
Wet space: No  
Addition: No  
Conversion: No

19 Floor 2 - W.I.C.



Dimensions: 4'6" x 3'4"  
Area: 15 sq. ft  
Counted as living area: Yes

Heated: Yes  
Finished: Yes  
Enclosed: Yes  
Contiguous: Yes  
Permitted: Yes  
Wet space: No  
Addition: No  
Conversion: No