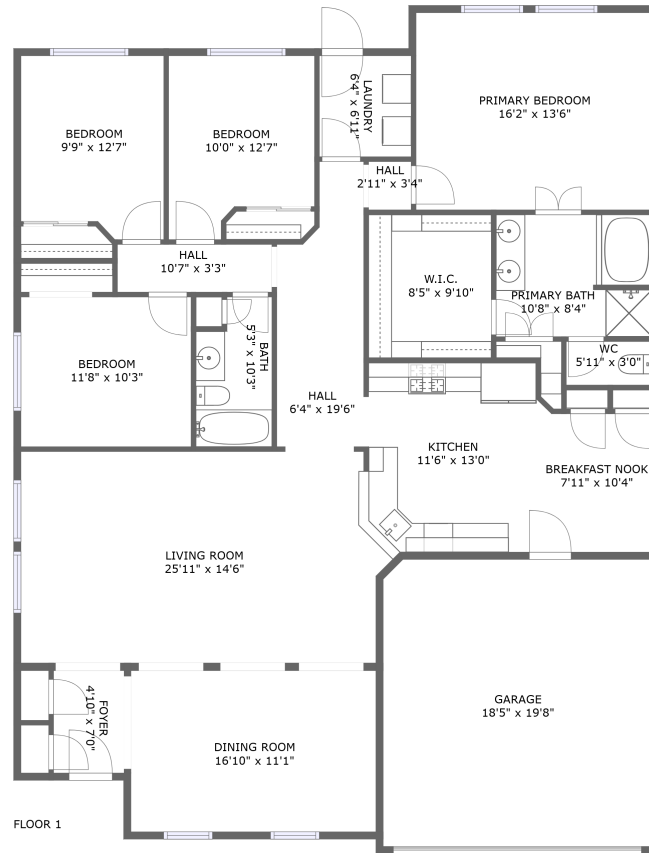


# 303 Lake Line Drive, Alvin, Texas 77511, United States




## Property Summary

 **1** garages

 **4** bedrooms

 **2** bathrooms

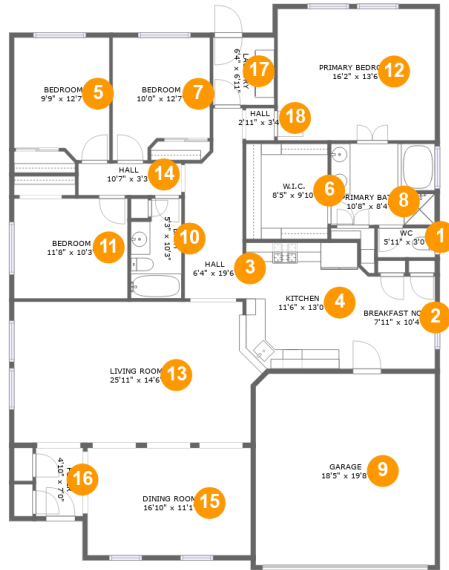
 **0** half baths

 **1** floors

 **2,059** Gross Living Area sqft

 **2,440** total sqft

# 303 Lake Line Drive, Alvin, Texas 77511, United States



## Room Dimensions

Floor 1

Total sqft: 2440

Living area: 2059

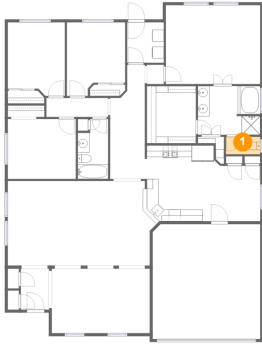
#	Room name	Dimensions	Area (sqft)	Counted as Living Area
1	Wc	5'11" x 3'0"	18 sq. ft	Yes
2	Breakfast Nook	7'11" x 10'4"	76 sq. ft	Yes
3	Hall	6'4" x 19'6"	102 sq. ft	Yes
4	Kitchen	11'6" x 13'0"	147 sq. ft	Yes
5	Bedroom	9'9" x 12'7"	116 sq. ft	Yes
6	W.i.c.	8'5" x 9'10"	83 sq. ft	Yes
7	Bedroom	10'0" x 12'7"	112 sq. ft	Yes
8	Primary Bath	10'8" x 8'4"	88 sq. ft	Yes
9	Garage	18'5" x 19'8"	362 sq. ft	No
10	Bath	5'3" x 10'3"	48 sq. ft	Yes
11	Bedroom	11'8" x 10'3"	120 sq. ft	Yes

# 303 Lake Line Drive, Alvin, Texas 77511, United States

#	Room name	Dimensions	Area (sqft)	Counted as Living Area
12	Primary Bedroom	16'2" x 13'6"	219 sq. ft	Yes
13	Living Room	25'11" x 14'6"	353 sq. ft	Yes
14	Hall	10'7" x 3'3"	35 sq. ft	Yes
15	Dining Room	16'10" x 11'1"	186 sq. ft	Yes
16	Foyer	4'10" x 7'0"	34 sq. ft	Yes
17	Laundry	6'4" x 6'11"	44 sq. ft	Yes
18	Hall	2'11" x 3'4"	10 sq. ft	Yes

# 303 Lake Line Drive, Alvin, Texas 77511, United States

## 1 Floor 1 - Wc



**Dimensions:** 5'11" x 3'0"  
**Area:** 18 sq. ft  
**Counted as Living Area:**  
Yes

**Heated:** Yes  
**Finished:** Yes  
**Enclosed:** Yes  
**Contiguous:**  
Yes  
**Permitted:** Yes  
**Wet Space:** Yes  
**Addition:** No  
**Conversion:** No

## 2 Floor 1 - Breakfast Nook

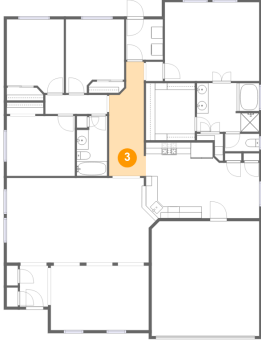


**Dimensions:** 7'11" x 10'4"  
**Area:** 76 sq. ft  
**Counted as Living Area:**  
Yes

**Heated:** Yes  
**Finished:** Yes  
**Enclosed:** Yes  
**Contiguous:**  
Yes  
**Permitted:** Yes  
**Wet Space:** No  
**Addition:** No  
**Conversion:** No

# 303 Lake Line Drive, Alvin, Texas 77511, United States

## 3 Floor 1 - Hall



Dimensions: 6'4" x 19'6"  
Area: 102 sq. ft  
Counted as Living Area:  
Yes

Heated: Yes  
Finished: Yes  
Enclosed: Yes  
Contiguous:  
Yes  
Permitted: Yes  
Wet Space: No  
Addition: No  
Conversion: No

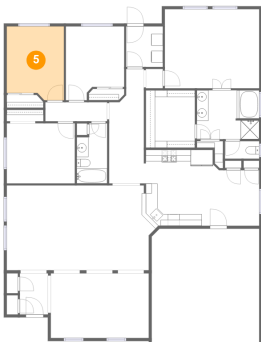
## 4 Floor 1 - Kitchen



Dimensions: 11'6" x 13'0"  
Area: 147 sq. ft  
Counted as Living Area:  
Yes

Heated: Yes  
Finished: Yes  
Enclosed: Yes  
Contiguous:  
Yes  
Permitted: Yes  
Wet Space: No  
Addition: No  
Conversion: No

## 5 Floor 1 - Bedroom

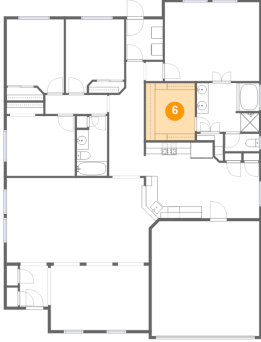


Dimensions: 9'9" x 12'7"  
Area: 116 sq. ft  
Counted as Living Area:  
Yes

Heated: Yes  
Finished: Yes  
Enclosed: Yes  
Contiguous:  
Yes  
Permitted: Yes  
Wet Space: No  
Addition: No  
Conversion: No

# 303 Lake Line Drive, Alvin, Texas 77511, United States

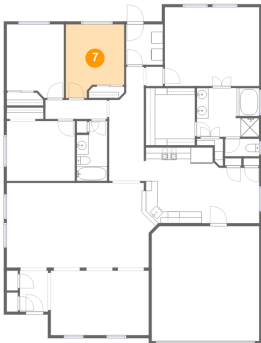
## 6 Floor 1 - W.i.c.



Dimensions: 8'5" x 9'10"  
Area: 83 sq. ft  
Counted as Living Area:  
Yes

Heated: Yes  
Finished: Yes  
Enclosed: Yes  
Contiguous:  
Yes  
Permitted: Yes  
Wet Space: No  
Addition: No  
Conversion: No

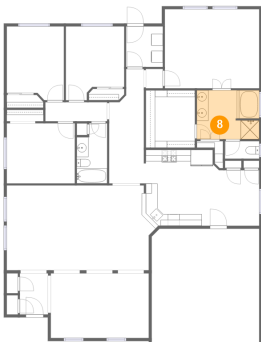
## 7 Floor 1 - Bedroom



Dimensions: 10'0" x 12'7"  
Area: 112 sq. ft  
Counted as Living Area:  
Yes

Heated: Yes  
Finished: Yes  
Enclosed: Yes  
Contiguous:  
Yes  
Permitted: Yes  
Wet Space: No  
Addition: No  
Conversion: No

## 8 Floor 1 - Primary Bath

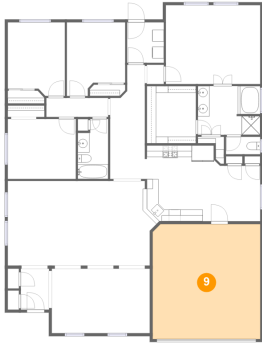


Dimensions: 10'8" x 8'4"  
Area: 88 sq. ft  
Counted as Living Area:  
Yes

Heated: Yes  
Finished: Yes  
Enclosed: Yes  
Contiguous:  
Yes  
Permitted: Yes  
Wet Space: Yes  
Addition: No  
Conversion: No

# 303 Lake Line Drive, Alvin, Texas 77511, United States

## 9 Floor 1 - Garage



Dimensions: 18'5" x 19'8"  
Area: 362 sq. ft  
Counted as Living Area: No

Heated: No  
Finished: No  
Enclosed: Yes  
Contiguous: Yes  
Permitted: Yes  
Wet Space: No  
Addition: No  
Conversion: No

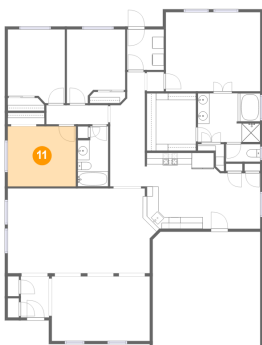
## 10 Floor 1 - Bath



Dimensions: 5'3" x 10'3"  
Area: 48 sq. ft  
Counted as Living Area: Yes

Heated: Yes  
Finished: Yes  
Enclosed: Yes  
Contiguous: Yes  
Permitted: Yes  
Wet Space: Yes  
Addition: No  
Conversion: No

## 11 Floor 1 - Bedroom



Dimensions: 11'8" x 10'3"  
Area: 120 sq. ft  
Counted as Living Area: Yes

Heated: Yes  
Finished: Yes  
Enclosed: Yes  
Contiguous: Yes  
Permitted: Yes  
Wet Space: No  
Addition: No  
Conversion: No

# 303 Lake Line Drive, Alvin, Texas 77511, United States

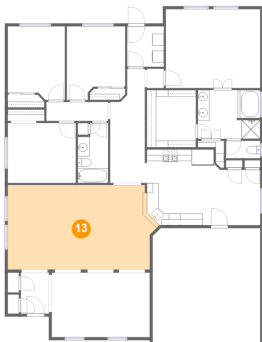
## 12 Floor 1 - Primary Bedroom



**Dimensions:** 16'2" x 13'6"  
**Area:** 219 sq. ft  
**Counted as Living Area:**  
Yes

**Heated:** Yes  
**Finished:** Yes  
**Enclosed:** Yes  
**Contiguous:**  
Yes  
**Permitted:** Yes  
**Wet Space:** No  
**Addition:** No  
**Conversion:** No

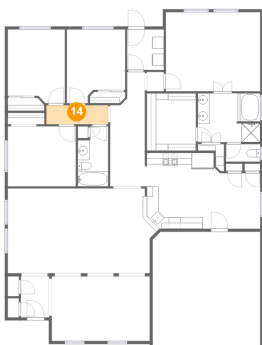
## 13 Floor 1 - Living Room



**Dimensions:** 25'11" x 14'6"  
**Area:** 353 sq. ft  
**Counted as Living Area:**  
Yes

**Heated:** Yes  
**Finished:** Yes  
**Enclosed:** Yes  
**Contiguous:**  
Yes  
**Permitted:** Yes  
**Wet Space:** No  
**Addition:** No  
**Conversion:** No

## 14 Floor 1 - Hall



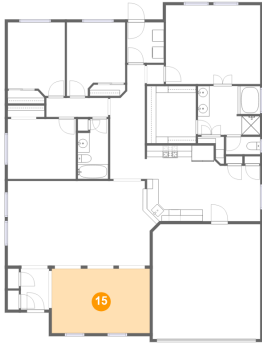
**Dimensions:** 10'7" x 3'3"  
**Area:** 35 sq. ft  
**Counted as Living Area:**  
Yes

**Heated:** Yes  
**Finished:** Yes  
**Enclosed:** Yes  
**Contiguous:**  
Yes  
**Permitted:** Yes  
**Wet Space:** No  
**Addition:** No  
**Conversion:** No



# 303 Lake Line Drive, Alvin, Texas 77511, United States

## 15 Floor 1 - Dining Room



Dimensions: 16'10" x 11'1"  
Area: 186 sq. ft  
Counted as Living Area:  
Yes

Heated: Yes  
Finished: Yes  
Enclosed: Yes  
Contiguous:  
Yes  
Permitted: Yes  
Wet Space: No  
Addition: No  
Conversion: No

## 16 Floor 1 - Foyer



Dimensions: 4'10" x 7'0"  
Area: 34 sq. ft  
Counted as Living Area:  
Yes

Heated: Yes  
Finished: Yes  
Enclosed: Yes  
Contiguous:  
Yes  
Permitted: Yes  
Wet Space: No  
Addition: No  
Conversion: No

## 17 Floor 1 - Laundry

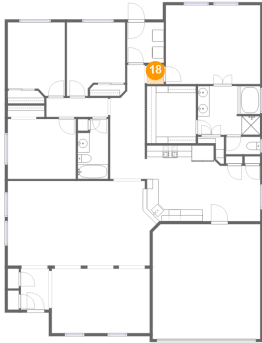


Dimensions: 6'4" x 6'11"  
Area: 44 sq. ft  
Counted as Living Area:  
Yes

Heated: Yes  
Finished: Yes  
Enclosed: Yes  
Contiguous:  
Yes  
Permitted: Yes  
Wet Space: No  
Addition: No  
Conversion: No

# 303 Lake Line Drive, Alvin, Texas 77511, United States

## 18 Floor 1 - Hall



**Dimensions:** 2'11" x 3'4"  
**Area:** 10 sq. ft  
**Counted as Living Area:**  
Yes

**Heated:** Yes  
**Finished:** Yes  
**Enclosed:** Yes  
**Contiguous:**  
Yes  
**Permitted:** Yes  
**Wet Space:** No  
**Addition:** No  
**Conversion:** No